

# 2-STROKE

## OIL INDICATOR TEST



*B<sup>3</sup>C Fuel Solutions*  
LLC

[www.b3cfuel.co.uk](http://www.b3cfuel.co.uk)

## 2-Stroke Oil Indicator Test

This test will indicate how much 2-Stroke oil is present in the fuel. Fuel can be checked at either the fuel tank or carburettor. If you suspect that the unit was ran without oil, using fuel from the primer bulb or inside the carburettor will provide the best results.

\*Note: The test solution has a 1-year shelf life. Please obtain new solution from your distributor. Keep lid closed tightly and store in a cool dry place.

**This test will take approximately 1-2 minutes**

1. Obtain a small sample of fuel using either the syringe or measuring cup, enough to fill a vial 1/3 full is optimal (a few drops of fuel (2ml) will work).
2. Shake the bottle of 2-Stroke Indicator Solution well then place enough solution to double the volume of the vial (1 to 1 ratio).

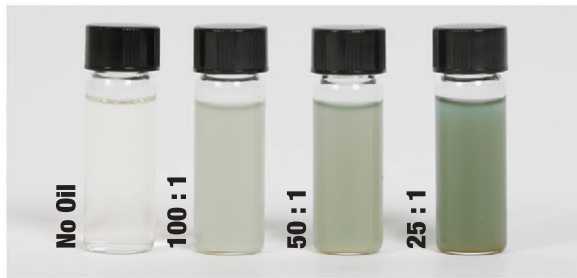


## B3C PETROL TEST KIT

### KIT INCLUDES -

- Petrol Quality Test
- Petrol Phase Separation Test
- 2-Stroke Oil Indicator Test
- Petrol 'High Sensitivity' Test
- Ethanol Indicator Test
- Bound Water Test
- 4-Stroke Oil Change Indicator Test

**\*NOTE\*** Mixing Ratio from Left to Right is = No Oil, 100:1, 50:1, 25:1. All fuel was mixed using laboratory grade measuring equipment and was photographed in a single session. All photographs are unedited.



**BRAND** B3C  
**TYPE** Ethanol Shield  
**RATING** ISO-L-EGD, JASO FD  
Semi-Synthetic  
**PART No.** B3C2STLTR



**BRAND** MITOX®  
**TYPE** 2 Stroke Oil  
**RATING** ISO-L-EGD, JASO FC  
Semi-Synthetic  
**PART No.** MILBTS01



**BRAND** Oregon  
**TYPE** 2T Oil  
**RATING** ISO-L-EGD, JASO FD  
Semi-Synthetic  
**PART No.** 90720



**BRAND** Husqvarna  
**TYPE** HP  
**RATING** ISO-L-EGB, JASO FB  
Mineral  
**PART No.** 576 74 17-01



**BRAND** Husqvarna  
**TYPE** LS+  
**RATING** ISO-L-EGD, JASO FD  
Semi-Synthetic  
**PART No.** 578 03 70-02



**BRAND** Husqvarna  
**TYPE** XP  
**RATING** ISO-L-EGD, JASO FD  
Synthetic  
**PART No.** 578 03 70-03





**BRAND** STIHL  
**TYPE** HP  
**RATING** ISO-L-EGD, JASO FB  
Mineral  
**PART No.** 0781 319 8410



**BRAND** STIHL  
**TYPE** HP Super  
**RATING** ISO-L-EGD, JASO FD  
Semi-Synthetic  
**PART No.** 0781 319 8053



**BRAND** STIHL  
**TYPE** HP Ultra  
**RATING** ISO-L-EGD, JASO FD  
Synthetic  
**PART No.** 0781 319 8061



**BRAND** ECHO  
**TYPE** PowerBlendX  
**RATING** ISO-L-EGD, JASO FD  
Semi-Synthetic  
**PART No.** 6450116



**BRAND** B&Q  
**TYPE** 2 Stroke Power Tool Oil  
**RATING** Unspecified  
Mineral  
**PART No.** OL102



**BRAND** NO NONSENSE  
**TYPE** 2 Stroke Engine Oil  
**RATING** ISO-L-EGB, JASO FB  
Unspecified  
**PART No.** 59299-0001



**BRAND** HOMEBASE  
**TYPE** 2 Stroke Oil  
**RATING** Unspecified  
Unspecified  
**PART No.** 363709