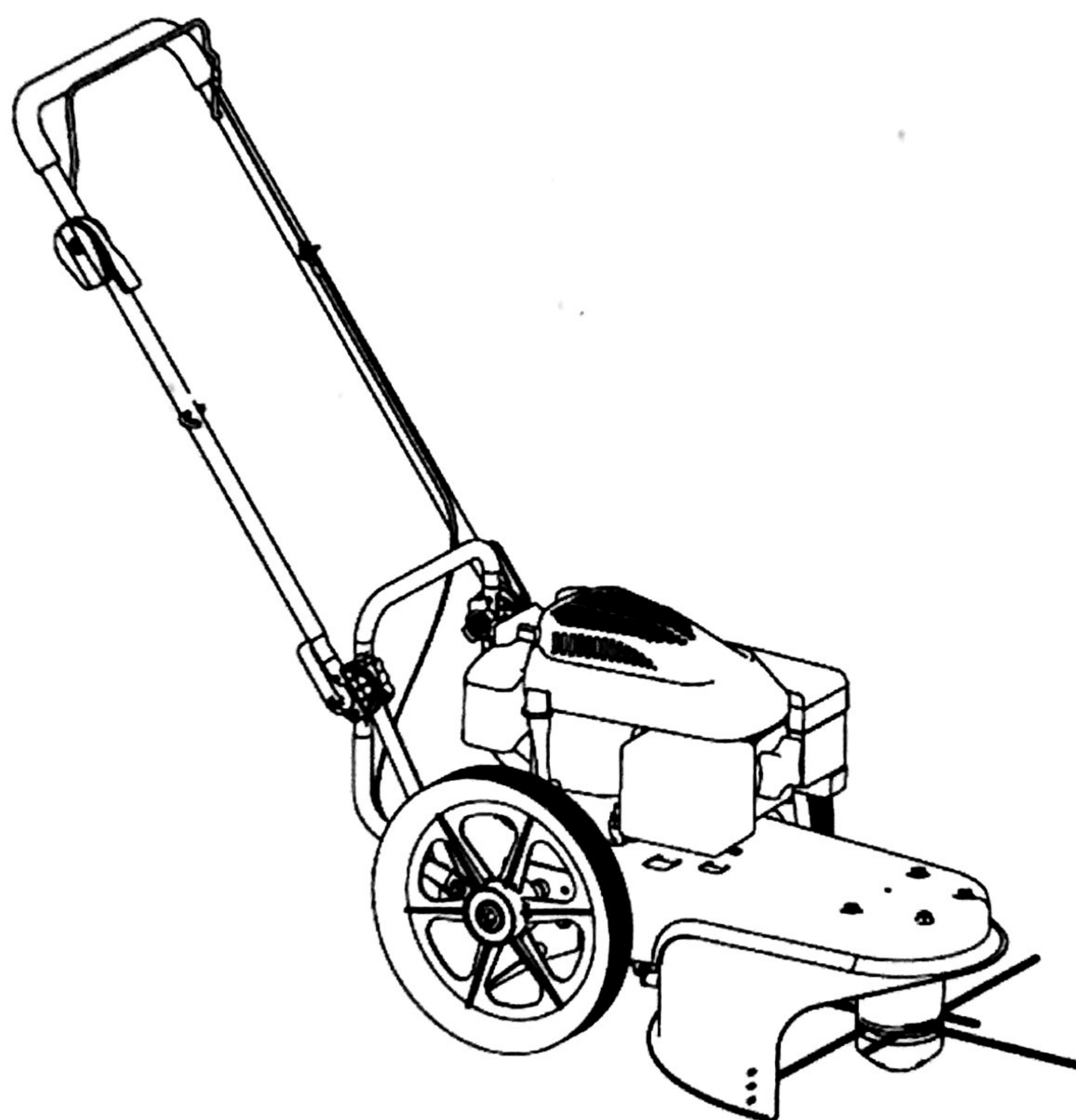


COBRA

MODELS: WT56B (LM073)

COBRA WHEELED TRIMMER OWNER'S MANUAL



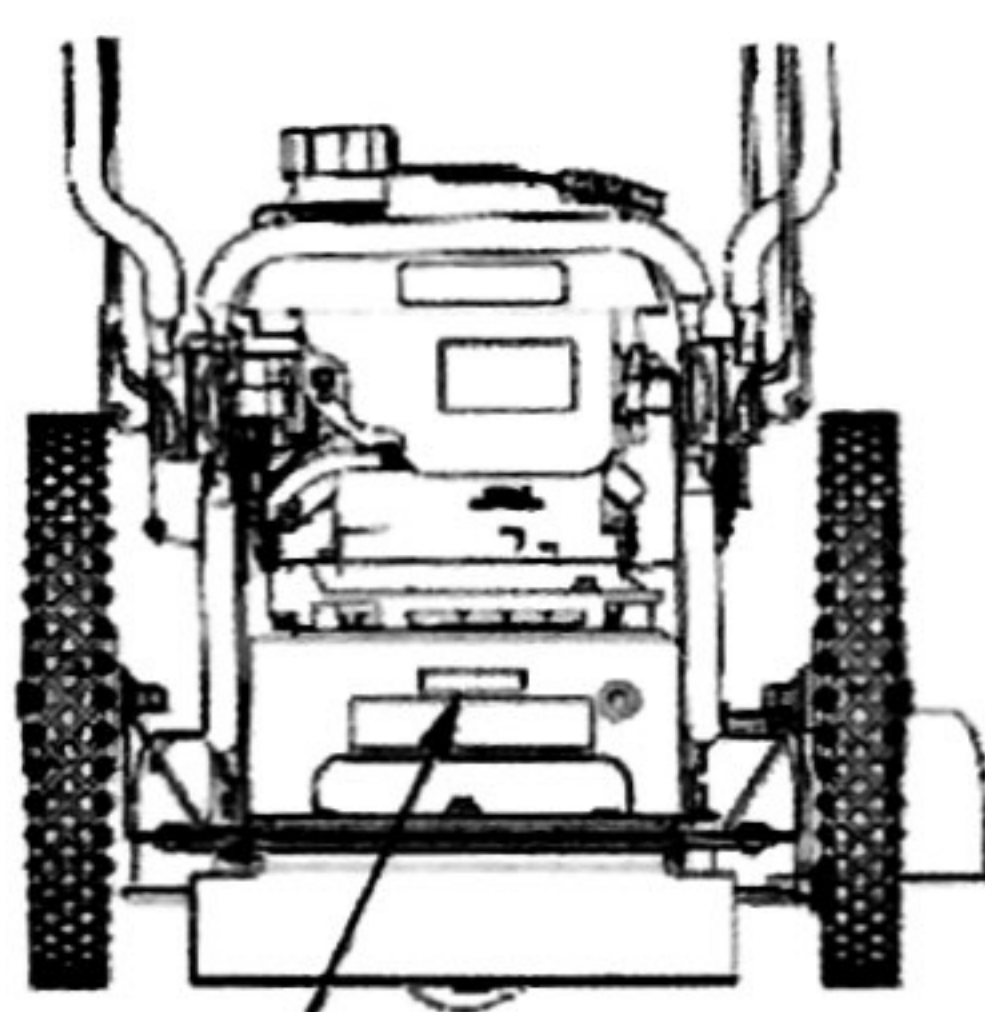
Cobra Garden Machinery
Henton & Chattell Ltd., London Road, Nottingham NG2 3HW UK

WARNING:

For your own safety please read this manual before attempting to operate your new unit. Failure to follow instructions can result in serious personal injury. Spend a few moments to familiarise yourself with your wheeled trimmer before each use. Keep this manual in a safe place, so that the information is available at all times. If you give the equipment to any other person, hand over these operating instructions and safety regulations as well.

CONTENTS

Registration.....	2
Warnings and Safety Precautions.....	3-6
Features.....	7
Assembly.....	8-9
Operation.....	9-10
Maintenance, Service and Storage.....	11-15
Maintenance.....	11
Servicing and Adjustment.....	12-14
Storage.....	15
Troubleshooting.....	15-16
Slope Guide.....	17
Illustrated Parts Breakdown.....	18-22
Warranty.....	19



MODEL AND SERIAL
NUMBER LOCATION

PRODUCT REGISTRATION

Please register your new Cobra Wheeled Trimmer online at www.cobragarden.co.uk or by post to Cobra Garden, London Road, Nottingham NG2 3HW UK

The model and serial number is detailed on the plate at the rear of the machine as illustrated.

WARNING

WARNING INDICATES A HAZARD WHICH, IF NOT AVOIDED, COULD RESULT IN DEATH OR SERIOUS INJURY TO PERSONNEL AND/OR PROPERTY DAMAGE.

WARNINGS AND SAFETY PRECAUTIONS

Operator's Responsibility

Accurate assembly and safe and effective use of the machine is the operator's responsibility.

- Read and follow all safety instructions.
- Carefully follow all assembly instructions.
- Maintain the machine according to directions and schedule included in this operator's manual.
- Ensure that anyone who uses the machine is familiar with all controls and safety precautions.

Special Safety Messages

Your manual contains special messages to bring attention to potential safety concerns, machine damage as well as helpful operating and servicing information. Please read all the information carefully to avoid injury and machine damage.

NOTE: General information is given throughout the manual that may help the operator in the operation or service of the machine.



THIS SYMBOL POINTS OUT IMPORTANT SAFETY INSTRUCTIONS WHICH IF NOT FOLLOWED COULD ENDANGER YOUR PERSONAL SAFETY.

Before Operating Engine:

WARNING

READ ENTIRE OPERATING AND MAINTENANCE INSTRUCTIONS FOR THIS PRODUCT AND THE INSTRUCTIONS FOR THE ENGINE THAT POWERS THIS UNIT. FAILURE TO FOLLOW INSTRUCTIONS COULD RESULT IN SERIOUS INJURY OR DEATH. OPERATE THE ENGINE ACCORDING TO THE SAFETY INSTRUCTIONS OUTLINED HERE AND INSERTED THROUGHOUT THE TEXT. ANYONE WHO USES THIS PRODUCT MUST READ THE INSTRUCTIONS AND BE FAMILIAR WITH THE CONTROLS.

IMPORTANT

INDICATES HELPFUL INFORMATION FOR PROPER ASSEMBLY, OPERATION, OR MAINTENANCE OF YOUR EQUIPMENT.

WARNING

YOU MUST READ, UNDERSTAND AND COMPLY WITH ALL SAFETY AND OPERATING INSTRUCTIONS IN THIS MANUAL BEFORE ATTEMPTING TO SETUP AND OPERATE YOUR MACHINE.

FAILURE TO COMPLY WITH ALL SAFETY AND OPERATING INSTRUCTIONS CAN RESULT IN LOSS OF MACHINE CONTROL, SERIOUS PERSONAL INJURY TO YOU AND/OR BYSTANDERS, AND RISK OF EQUIPMENT AND PROPERTY DAMAGE. THE TRIANGLE IN THE TEXT SIGNIFIES IMPORTANT CAUTIONS OR WARNINGS WHICH MUST BE FOLLOWED.

CAUTION

CAUTION INDICATES YOUR EQUIPMENT CAN BE DAMAGED IF THE SAFETY INSTRUCTIONS THAT FOLLOW THIS SIGNAL WORD ARE NOT OBEYED.

GENERAL Safety Rules

- Read, understand, and follow all instructions on the machine and in the manual(s). Be thoroughly familiar with the controls and the proper use of the mower before starting.
- Familiarize yourself with all of the safety and operating decals on this equipment and on any of its attachments or accessories.
- Do not put hands or feet near or under rotating parts.
- Only allow responsible individuals, who are familiar with the instructions, to operate the mower.
- Thoroughly inspect the area where the machine is to be used and remove all foreign objects. Your equipment can propel small objects at high speed causing personal injury or property damage. Stay away from breakable objects, such as house windows, automobile, greenhouses, etc.
- Keep the area of operation clear of all persons, particularly small children, and pets.
- Wear appropriate clothing such as a long-sleeved shirt or jacket. Also wear long trousers or slacks. Do not wear shorts.
- Do not wear loose clothing or jewelry. They can get caught in moving parts.
- Always wear safety goggles or safety glasses with side shields when operating mower to protect your eyes from foreign objects which can be thrown from the unit.
- Always wear work gloves and sturdy footwear. Wear footwear that will improve footing on slippery surfaces. Leather work shoes or short boots work well for most people. These will protect the operator's ankles and shins from small sticks, splinters, and other debris.
- It is advisable to wear protective headgear to prevent the possibility of being struck by small flying particles, or being struck by low hanging branches, twigs, or other objects which may be unnoticed by the operator.
- Do not operate the mower without proper guards or other safety protective devices in place.
- Use this equipment for its intended purpose only.
- See manufacturer's instructions for proper operation and installation of accessories. Only use accessories approved by the manufacturer.
- Operate only in daylight or good artificial light.
- Do not operate product when fatigued or under the influence of alcohol, drugs or other medication which can cause drowsiness or affect your ability to operate this machine safely.
- Never operate mower in wet grass. Always be sure of your footing; keep a firm hold on the handle and walk; never run.
- Before each use, inspect the ON/OFF switch and cable. Make sure that the cable is free and that the lever is not damaged. Also check the cable linkage running to the carburetor for kinks, loose fitting, and obstructions. Verify that the control bail is working properly.
- Stop the rotating mower head when crossing gravel drives, walks, or roads. Wait for the cutting lines to stop rotating.
- Watch for traffic when operating near, or when crossing roads.
- Stop the engine (motor) whenever you leave the equipment, before cleaning, repairing or inspecting the unit, be sure the mower head and all moving parts have stopped. Let the engine cool, disconnect the spark plug wire and move it away from the spark plug.
- If the equipment should start to vibrate abnormally, stop the engine (motor), disconnect the spark plug wire and prevent it from touching the spark plug. Check immediately for cause. Vibration is generally a warning of trouble.
- After striking a foreign object, stop the engine (motor). Remove the wire from the spark plug. Inspect the mower for damage. If damaged, repair before starting and operating the mower.
- Never leave the mower unattended when the engine is running. Remove the wire from the spark plug.
- Regularly inspect the mower. Make sure parts are not bent, damaged or loose.
- Allow muffler and engine areas to cool before touching. Never pick up or carry the mower while the engine is running.
- Prolonged exposure to noise and vibration from gasoline engine powered equipment should be avoided. Take intermittent breaks and/or wear ear protection from engine noise as well as heavy work gloves to reduce vibration in the hands.
- Check local regulations for age restrictions on use of this machine.
- If the noise or vibrations of the machine increase, stop immediately and perform an inspection.
- The fuel used in this machine is considered extremely flammable and should be handled with care. When storing extra fuel be sure that it is in an appropriate container and away from any fire hazards.

Slope Operation

Slopes are a major factor related to slip and fall accidents which can result in severe injury. All slopes require extra caution. If you feel uneasy on a slope, do not mow it. Do mow across the face of slopes; never up and down. Do not mow excessively steep slopes (maximum 15 degrees) or areas where the ground is very rough. See the "Slope Guide" in the back of this manual to check a slope. Exercise extreme caution when changing direction on slopes.

Remove objects such as rocks, tree limbs, etc.

Watch for holes, ruts, or bumps. Tall grass can hide obstacles.

IMPORTANT NOTES:

Do not mow near drop-offs, ditches, or embankments. The operator could lose footing or balance.

Do not mow excessively steep slopes.

Do not mow on wet grass. Reduced footing could cause slipping.

Children

Tragic accidents can occur if the operator is not alert to the presence of children. Children are often attracted to the mower and the mowing activity. Never assume that children will remain where you last saw them.

- Keep children out of the mowing area and under the watchful care of a responsible adult.
- Be alert and turn mower off if children enter the area.
- Before and while moving backwards, look behind and down for small children.
- Never allow children to operate the mower.
- Use extra care when approaching blind corners, shrubs, trees, or other objects that may obscure vision.

Service

- Use extra care in handling gasoline and other fuels. They are flammable and vapors are explosive.
- Use only an approved container.
- Never remove gas cap or add fuel with the engine running. Allow engine to cool before refueling. Do not smoke while refueling.
- Fill fuel tank outdoors with extreme care. Never fill fuel tank indoors or near appliances with pilot lights, heaters, or other ignition sources. Replace fuel cap securely. If fuel is spilled, do not start the engine but move product and fuel container from area. Clean up spilled fuel and allow to evaporate.

- Never store the machine or fuel container inside where there is an open flame (such as a water heater), or other ignition source.
- If the fuel has to be drained, this should be done outdoors. The drained fuel should be stored in a container specifically designed for fuel storage or it should be disposed of carefully.
- Engines give off carbon monoxide, an odorless, colorless, poison gas. Breathing carbon monoxide can cause nausea, fainting or death. Always start and run engine outdoors. Do not start or run engine in an enclosed area, even if doors or windows are open.
- Never make adjustments or repairs with the engine (motor) running. Disconnect the spark plug wire, and keep the wire away from the plug to prevent accidental starting (remove the ignition key if equipped with an electric start). Always wear eye protection when you make adjustments or repairs.
- Check the mower head and engine mounting bolts at frequent intervals for proper tightness.
- Keep all nuts and bolts tight and keep equipment in good condition. Check mounting hardware on mower head every time you change mower line and prior to each use.
- Never tamper with safety devices. Check their proper operation regularly.
- When servicing or repairing the mower, do not tip the machine over or up unless specifically instructed to do so in this manual. Service and repair procedures can be done with the mower in an upright position. Some procedures will be easier if the machine is lifted on a raised platform or working surface.
- To reduce fire hazard, keep mower free of grass, leaves, or other debris build-up. Clean up oil or fuel spillage. Allow mower to cool before storing.
- Stop and inspect the equipment if you strike an object. Repair, if necessary, before restarting.
- Always disconnect spark plug wire before cleaning, repairing, or adjusting.
- Do not change the engine governor setting or over-speed the engine.
- Clean and replace safety and instruction decals as necessary.
- To guard against engine over-heating, always have engine debris filter mounted and clean.
- Inspect mower before storage. When not in use, disconnect spark plug lead and store indoors in a dry place locked or otherwise inaccessible to children.
- Use only original equipment or authorized replacement parts.
- Never replace the cutting lines with metal parts.

SAFETY DECALS AND WARNINGS

Pictured below are safety and hazard symbols on the unit or in this manual. Before you operate your unit, learn and understand the purpose for each symbol.



Hazard Symbols and Meanings

- A: Warning!
- B: Read Owner's Manual Before Operating Machine
- C: Do Not Operate While Others Are Around
- D: Remove Objects that Could Be Thrown By This Machine.
- E: Never Operate Machine Up and Down Slopes, ALWAYS Operate Mower Across Slopes
- F: Be Aware of Moving and Rotating Parts
- G: Wear Ear and Eye Protection At All Times
- H: Do Not Service or Adjust Moving Parts Unless Engine is stopped and Spark Plug Wire is Disconnected.
- I: Direction of Rotating Mower Line
- J: Toxic Fumes—Do Not Operate in Unventilated Areas
- K: Hot Surfaces
- L: Fire Hazards.
- M: Do Not Use In Thunderstorms—For severe weather, stop operation of this machine and seek shelter.
- N: Team Lift - For your safety, always have at least two people when lifting this machine.
- O: Never Fit Metal Cutting Parts--Do not attach any metal parts to the cutting head of this machine.

Should any of the safety labels become unreadable because of being worn, faded, or otherwise damaged during the use of your mower, please use the part number information provided to order a replacement label.

Wheeled Trimmer

Mower Warning Decal

FEATURES

Read this owner's manual and safety rules before operating your mower. Take time to compare the following illustration with the mower to familiarize yourself with the product and its controls. SEE FIGURE 1

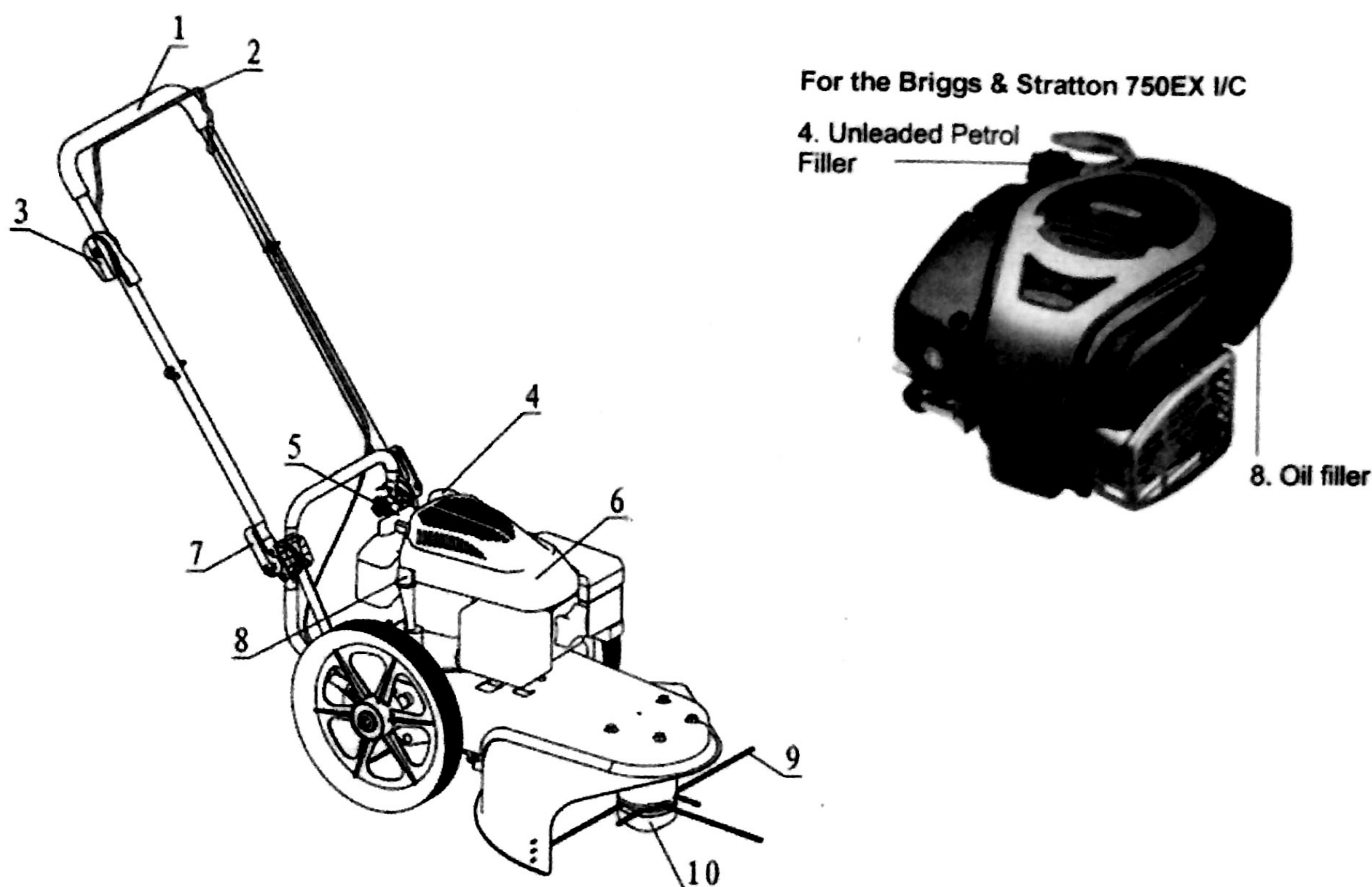


FIGURE 1: *Wheeled Trimmer Features*

1. Upper Handle
2. Mower Head Drive Lever - Engages rotation of Mower Head.
3. Engine On/Off switch
4. Fuel cap and fill port
5. Engine Recoil starter pull handle
6. Debris screen
7. Handle adjustment cam lever
8. Oil level indicator and filler port
9. Trimmer mowing line
10. Trimmer mower head

LM073 Specifications:

Mower Line Diameter:	4mm 0.155 inches
Mower Line Length:	38cm 15 inches
Mower Cutting Diameter:	56 cm 22 inches
Wheel Diameter:	35cm 14in

ASSEMBLY

Contents of Parts Bag

- Owner's Manual
- Engine Manual
- Warranty Card
- Replacement Mower Line
- L-Handle Allen Wrench
- Spark Plug Wrench
- Safety Goggles

To Remove the Mower from the Carton

1. Remove any of the loose parts in packaging, including the parts bags, from the carton.
2. Remove the packing material positioned around the unit.
3. Cut down all four corners of the carton and lay the side panels flat.
4. Pull the mower out of the carton. SEE FIGURE 2

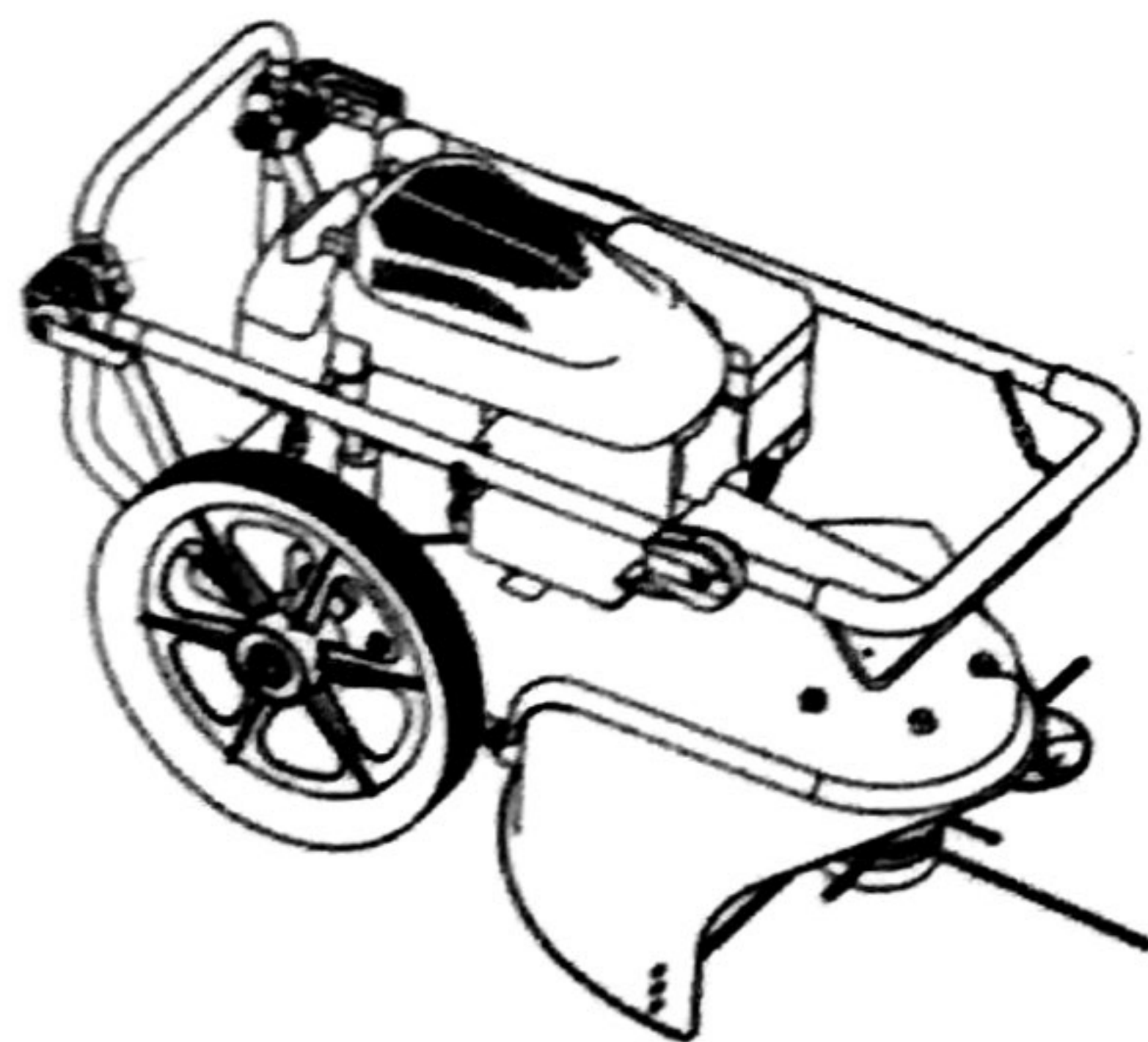


FIGURE 2: Your Wheeled Trimmer as it is shipped to you.

WARNING

USE THE CORRECT PERSONAL PROTECTION. WEAR SAFETY GLASSES OR EYE SHIELDS WHILE ASSEMBLING OR OPERATING THE STRING MOWER. REMOVE SPARK PLUG WIRE FROM SPARK PLUG BEFORE DOING ANY ASSEMBLY OR MAINTENANCE TO THE STRING MOWER.

How to Raise the Handle

1. Hold the handle with one hand and loosen both handle adjustment cams until the ratchet teeth are disengaged. Do not remove the handle adjustment levers.
2. Raise the handle to the operating position.
3. Stand in the operator's position behind the mower. Put the handle in a comfortable position. Make sure both sides of the handle are level.

NOTE: Make sure the cables are not caught between the upper and lower handle.

4. Tighten the handle adjustment levers. Make sure the handle pivots are locked in place.

NOTE: The handle height is adjustable. See "How To Adjust The Height Of The Handle" in the Service and Adjustment section.

5. To attach the recoil start handle to the rope guide, twist the rope through the rope guide mounted on the right side of the handle. SEE FIGURE 3.
6. Check mower head. Make sure no more than 1" of line is exposed out of the outfeed hole. If longer than 1" it is possible to have line thrown out of head early. SEE FIGURE 10 (PAGE 12)



FIGURE 3: Adjusting the Handle Bars.

⚠ WARNING

- FOLLOW THE ENGINE MANUFACTURER'S INSTRUCTIONS FOR THE TYPE OF GASOLINE AND OIL TO USE.
- ALWAYS USE A SAFETY GASOLINE CONTAINER. DO NOT SMOKE WHEN ADDING GASOLINE TO THE ENGINE.
- WHEN INSIDE AN ENCLOSURE, DO NOT FILL WITH GASOLINE. BEFORE YOU ADD GASOLINE, STOP THE ENGINE. LET THE ENGINE COOL FOR SEVERAL MINUTES.

ENGINE PREPARATION

See the engine manufacturer's instructions for the type of gasoline and oil to use. Before you use the unit, read the information on safety, operation, maintenance, and storage.

Note: Engine does not contain OIL or GASOLINE when shipped from the factory. You must service the engine before operation.

Fill Crankcase With Oil

1. Remove the oil dipstick. Fill the crankcase to the FULL line on dipstick. **DO NOT OVERFILL.** SEE FIGURE 4
2. Install the oil dipstick and tighten securely.

Fill Fuel Tank With Petrol

See the engine manufacturer's instructions for the type of gasoline to use.

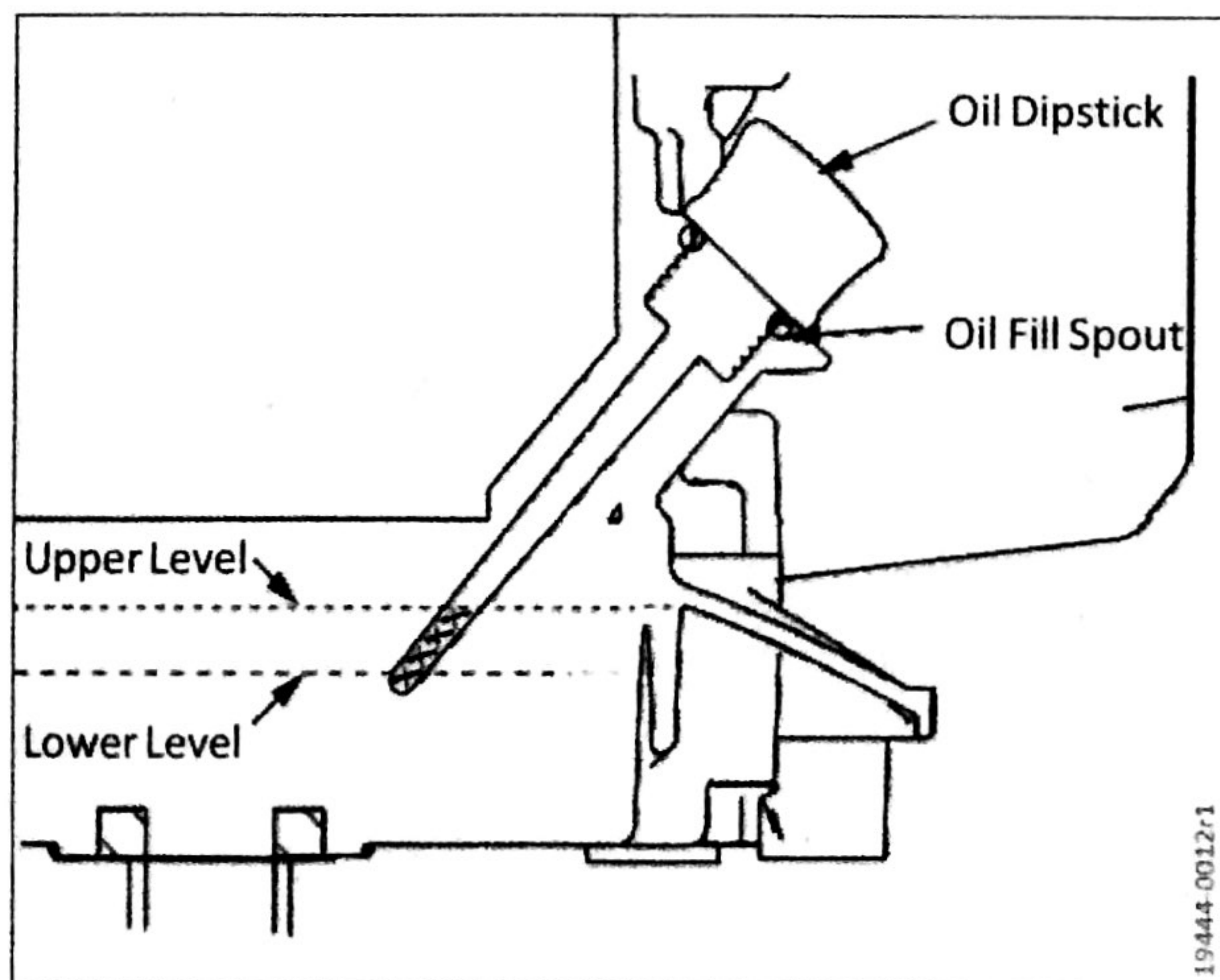


FIGURE 4: Filling Engine with Fuel and Oil.

OPERATION

How to Stop the Mower Head

Release the control bail. It will return to its open position and disengage the mower head.

How to Stop the Engine

Set the ON/OFF switch to the OFF position.

How to Use the Mower Head Drive Lever

1. To engage the mower head, hold the control bail against the handle. The faster the engine runs, the faster the mower head will rotate. SEE FIGURE 5
2. Once the mower head is rotating, push the mower forward to mow.

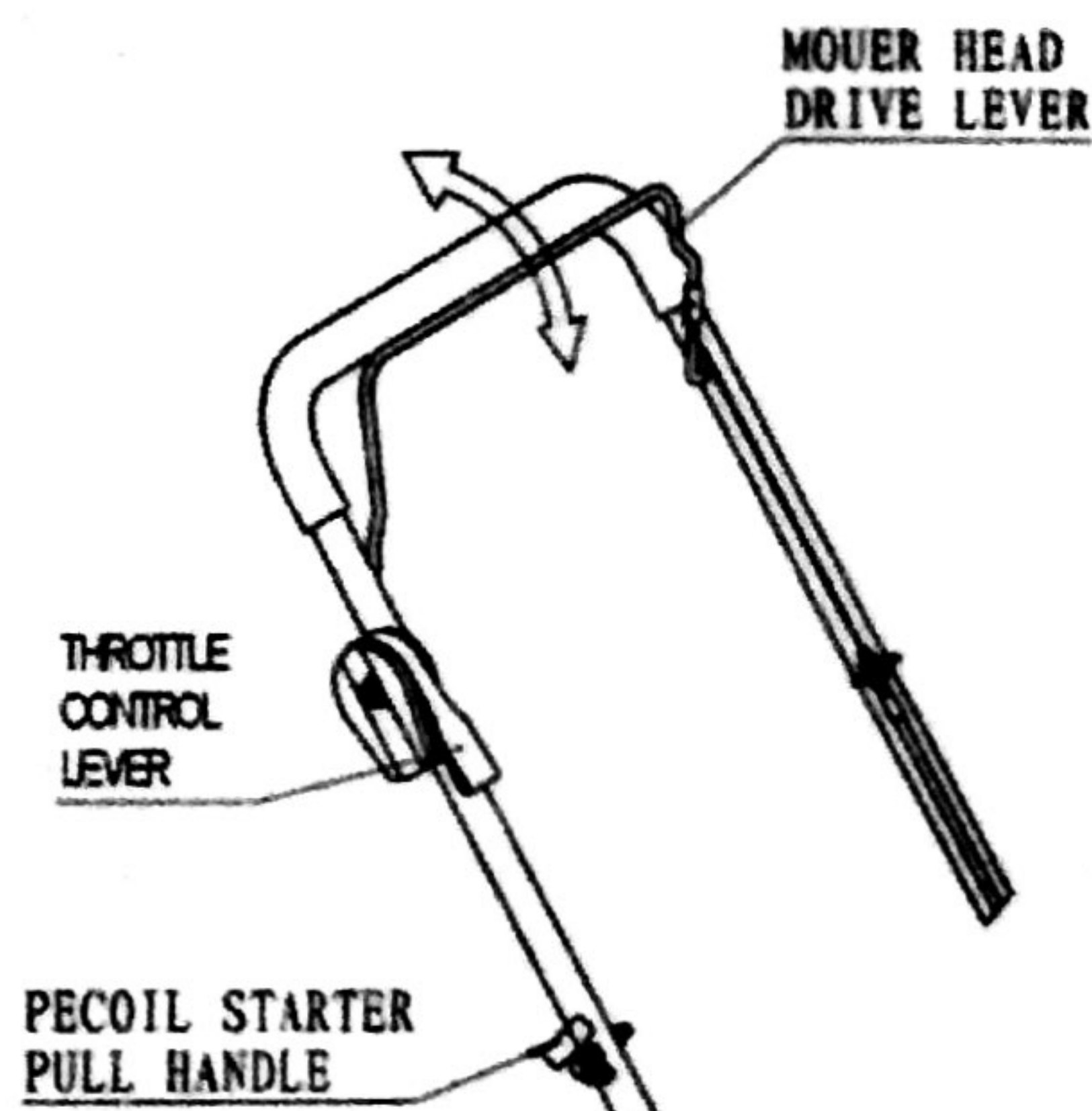


FIGURE 5: Using The Mower Head Drive Lever.

⚠ WARNING

BE CAREFUL AROUND MOVING PARTS. THE MOWER HEAD WILL CONTINUE TO ROTATE FOR SEVERAL SECONDS AFTER THE ENGINE HAS STOPPED.

⚠ CAUTION

- IMPROPER TREATMENT OF THE TRIMMER MOWER CAN DAMAGE IT AND SHORTEN ITS LIFE.
- DO NOT ATTEMPT TO CRANK OR START THE ENGINE BEFORE IT HAS BEEN PROPERLY SERVICED WITH THE RECOMMENDED OIL. THIS MAY RESULT IN AN ENGINE FAILURE.

Engine Throttle Control

1. The engine throttle speed is a factory setting. It is designed to ensure proper speed of your trimmer mower during all operating conditions.

Briggs & Stratton 750EX Engine Ready start

Provides simple and easy to use starting without having to prime the engine.

NOTE: *Your engine will smoke the first time it is started. It is burning off the protective coating that is on the internal engine parts.*

1. Before each use, remove debris from the debris screen. SEE FIGURE 1 IN "FEATURES" SECTION. Debris can cause the engine to overheat. Wipe the debris screen with a cloth or paper towel.
2. Set ON/OFF Switch to ON.
3. To start a cold engine, push the primer bulb five times. Wait two seconds between each push of the primer bulb.
-With Briggs & Stratton 750EX no need to prime.
4. Firmly hold the recoil starter handle with your right hand.
5. Pull back sharply on the recoil starter handle.

NOTE: *Do not allow the starter rope to snap back. Let the starter rope slowly rewind as you hold the recoil starter handle.*

Mower Tips:

- If the weeds or grass are tall and thick, operate the mower at a slower walking speed.
- Frequently clean the underside of the mower to remove any grass build up. See the "Maintenance, Service and Storage" section for details.
- For best results and longer lasting line, use the ends of the line to do the cutting. This is easily done by moving slowly through very thick or heavy weeds.
- If the mower lines become too short, it will take longer to complete the job. If the mower lines are worn to less than half their original length, change to a new mower line. See more on how to replace the mower line in the "Maintenance, Service and Storage" section.
- Do not mow on excessively steep slopes. If a slope is difficult to stand on, do not mow. Do not mow on slopes when the ground is slippery or wet. Mow across the face of a slope, not up and down.
- Mower head contact to concrete, asphalt and harder surfaces may create premature wear to the height guide.



WARNING

- DO NOT LEAVE TRIMMER MOWER UNATTENDED WHILE ENGINE IS RUNNING. WAIT FOR THE MOWER LINES TO STOP ROTATING.
- NEVER RUN THE ENGINE INDOORS OR IN A POORLY VENTILATED AREA. ENGINE EXHAUST CONTAINS CARBON MONOXIDE, AN ODORLESS AND DEADLY GAS. KEEP HANDS, FEET, HAIR AND LOOSE CLOTHING AWAY FROM THE MOWER AND ANY MOVING PARTS ON THE ENGINE. AVOID TOUCHING THE MUFFLER AND SURROUNDING AREAS. TEMPERATURES MAY EXCEED 150 DEGREES FAHRENHEIT.
- DEBRIS SUCH AS STICKS, GRAVEL OR ROCKS CAN BE THROWN WITH SUFFICIENT FORCE TO CAUSE PERSONAL INJURY OR PROPERTY DAMAGE.

WT56B WHEELED TRIMMER OWNER'S MANUAL

MAINTENANCE, SERVICE, AND STORAGE

NOTE: Maintenance, replacement or repair of the emissions control devices and systems may be performed by any non-road engine repair establishment or individuals. However, items must be serviced by an authorized dealer to obtain "no charge" emissions control service. Good maintenance is essential to help reduce air pollution and for safe, economical and trouble-free operation.

Maintenance Schedule

Service Records	Before Each Use	Every 25 Hours	As Noted	Service Date
Check engine oil level	x			
Check mower lines	x		1	
Check mower head engagement	x			
Engine/machine cleaning	x		2	
Check nuts and bolts	x			
Check spark plug		x		
Change engine oil*		x		
Service air filter*		x	3	
Lubricate jackshaft assembly		x		
Lubricate wheel bearings		x		

Note 1 - When old line is half the original length, replace with new line.

Note 2 - Clean daily if used in extremely dusty or dirty conditions.

Note 3 - Change more often if used in extremely dusty or dirty conditions.

* To service the air filter and change the oil in the LM073 model, use the wheel pivot to clear the air cleaner. On models without wheel pivot, it may be necessary to remove the wheel.

General Recommendations

The warranty on this mower does not cover items that have been subjected to operator abuse or negligence. To receive full value from the warranty, the operator must maintain the mower as instructed in this manual.

Some adjustments must be made periodically to properly maintain your mower. All adjustments in the "Service and Adjustments" section of this manual must be checked at least once each season.

⚠ WARNING

BEFORE YOU REMOVE THE DRIVE BELT, DISCONNECT THE WIRE FROM THE SPARK PLUG.

⚠ IMPORTANT

TEST THE DRIVE SYSTEM. START THE ENGINE AND ENGAGE AND DISENGAGE THE MOWER HEAD SEVERAL TIMES. WHEN DISENGAGED, MAKE SURE THE MOWER HEAD COMPLETELY STOPS WHEN RESTING ON THE GROUND. IF THE MOWER HEAD CONTINUES TO ROTATE, TAKE THE MOWER TO AN AUTHORIZED SERVICE CENTER.

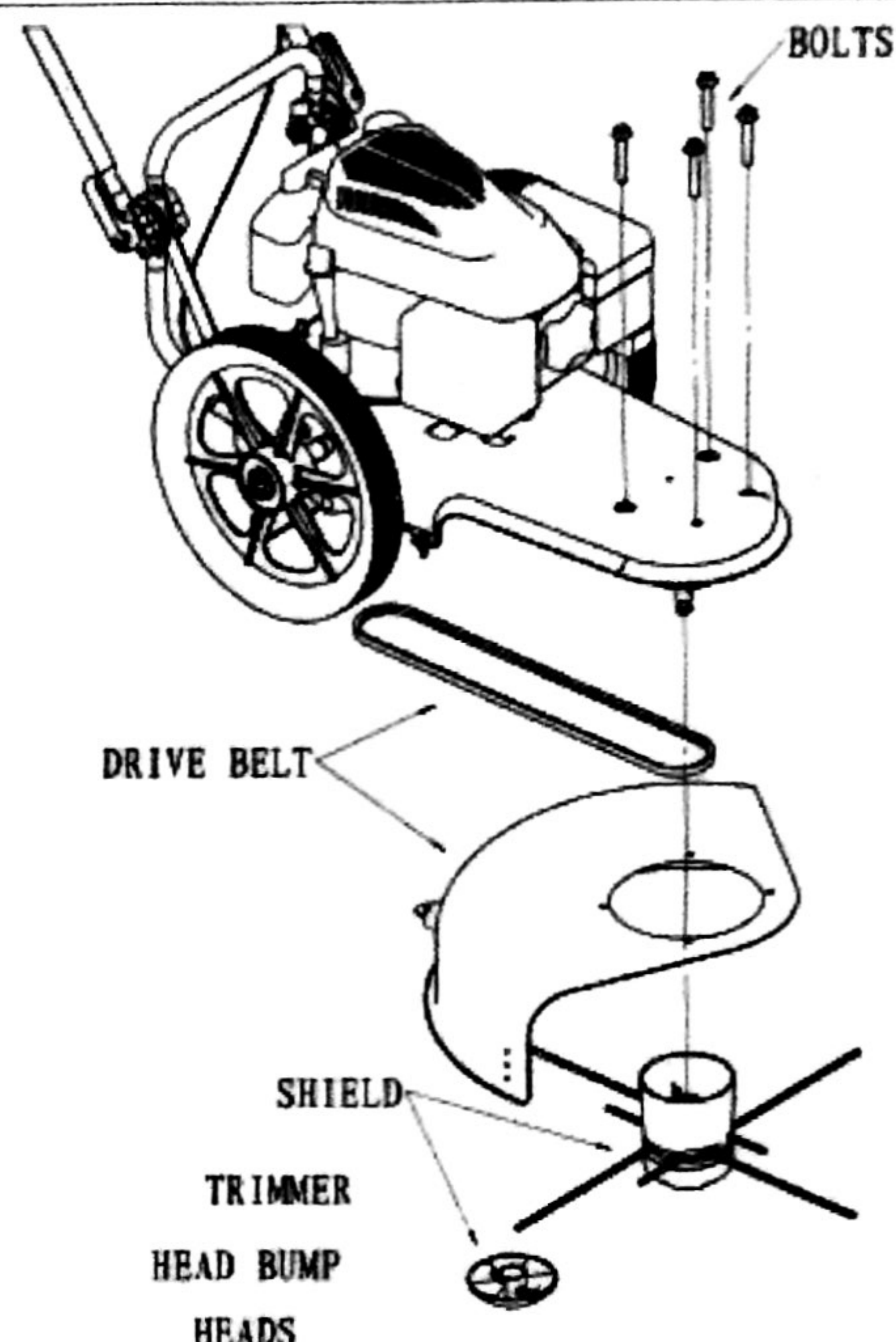


FIGURE 14: Mower Head Housing and Shield

How to Replace the Drive Belt

To replace the drive belt, the mower head and shield must be removed as follows: SEE FIGURES 14 AND 15

1. Remove the two screws that hold the rear of the shield to the mower housing.
2. Remove the four bolts that hold the front of the shield and mower head to the mower housing.
3. Raise the front of the mower housing and remove the drive belt.
4. Remove the "V" pulley from the idler bracket.

NOTE: On some models, it is necessary to loosen the mounting bolt for the drive pulley to remove the drive belt. Do not bend the belt guides. Use only OEM replacement belts.

5. To assemble the drive belt, reverse the above steps. Make sure all fasteners are tight. Make sure the mounting bolt for the drive pulley is tight.
6. Check the routing of the drive belt. Make sure the drive belt is inside of all belt guides as shown.

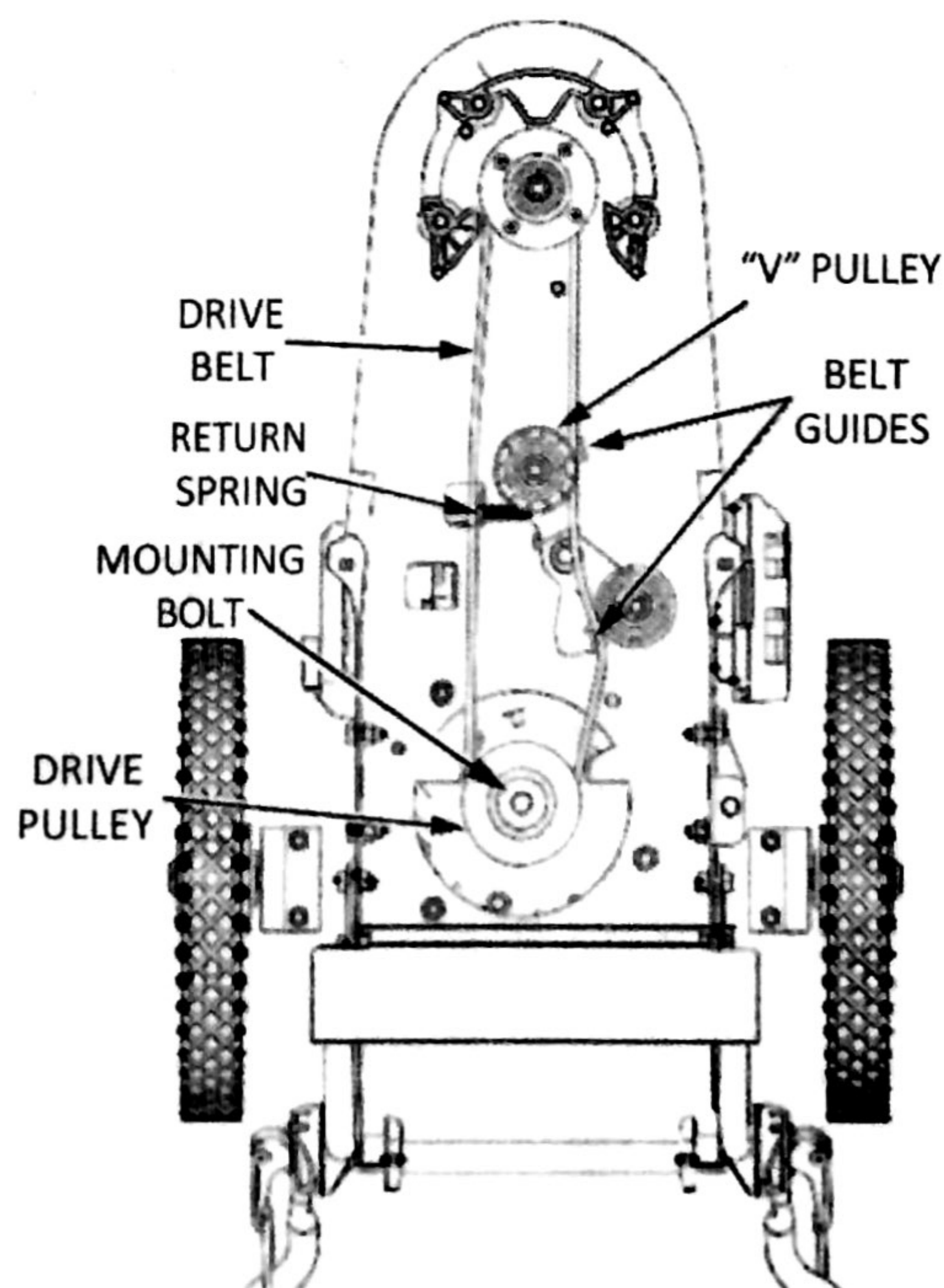


FIGURE 15: Routing The Drive Belt

WT56B WHEELED TRIMMER OWNER'S MANUAL

STORAGE

When the mower is put in storage for thirty days or more, follow the steps below to make sure the mower is in good condition the following season.

Mower:

Completely Clean The Mower

Remove and discard line or store in a sealed container. Put the mower in a building that has good ventilation.

NOTE: *A yearly check-up or tune-up at an authorized service dealer will ensure that the mower will provide maximum performance for the next season.*

Engine:

IMPORTANT NOTE:

It is important to prevent gum deposits from forming in fuel system parts such as the carburetor, fuel filter, fuel hose, and tank during storage. Also, using alcohol blended fuels (called gasohol, ethanol or methanol) can attract moisture which leads to separation and formation of acids during storage. Acidic gas can damage the fuel system of an engine while in storage.

1. Drain all petrol from the fuel tank. Let the engine run until it is out of petrol. If you do not want to remove petrol, add a fuel stabilizer to any gasoline left in the tank. A fuel stabilizer will minimize the formation of gum deposits and acids. If the tank is almost empty, mix the fuel stabilizer with fresh gasoline in a separate container and add the mixture to the tank. Always follow the instructions on the stabilizer container. Run the engine at least ten minutes after stabilizer is added to allow the mixture to reach the carburetor.
2. Drain the oil from a warm engine. Fill the engine crankcase with new oil.
3. Remove the spark plug from the cylinder. Pour one ounce of oil into the cylinder. Slowly pull the recoil starter handle so that the oil will protect the cylinder. Install a new spark plug in the cylinder.
4. Completely clean the mower, including dirt and debris from the cylinder cooling fins and the engine housing.
5. When not in use, disconnect spark plug lead and store in a well-ventilated area inaccessible to children.



WARNING

DO NOT REMOVE GASOLINE WHILE INSIDE A BUILDING, NEAR A FIRE, OR WHILE YOU SMOKE. GASOLINE FUMES CAN CAUSE AN EXPLOSION OR A FIRE.

TROUBLESHOOTING & REPAIR

For service and warranty matters contact your local Cobra dealer:

www.cobragarden.co.uk

Tel 0115 986 2161

Cobra Garden, London Road, Nottingham NG2 3HW

TROUBLESHOOTING GUIDE

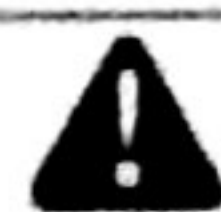
Trouble	Cause	Correction
Engine does not start	Spark plug wire disconnected	Connect spark plug wire
	Engine not primed	Prime engine
	Defective or incorrectly gapped spark plug	Inspect or replace spark plug
	Fuel tank empty	Add fuel
	Dirty carburetor or fuel line	Clean carburetor or fuel line
	Dirty air filter	Replace air filter
	Carburetor out of adjustment	For carburetor adjustment, take the unit to an authorized service center
	Engine flooded	Wait several minutes before starting
	ON/OFF Switch in incorrect position	Move Switch to ON position
	Stale gasoline	Drain old petrol and add fresh petrol
	Defective ON/OFF Switch or wire	Inspect and replace damaged parts
Engine runs poorly	Bad spark plug	Replace spark plug
	Dirty air filter	Replace air filter
	Carburetor out of adjustment	For carburetor adjustment, take the unit to an authorized service center
	Stale gasoline	Drain old petrol and add fresh gas
	Engine cooling system clogged	Clean debris screen and engine cooling fin
Engine overheats	Engine cooling system clogged	Clean debris screen and engine cooling fin
	Carburetor out of adjustment	For carburetor adjustment, take the unit to an authorized service center
	Oil level is low	Add oil
Engine will not stop running	ON/OFF Switch failed	Inspect and replace damaged parts
	Wire disconnected from ON/OFF Switch	Inspect, repair, or replace damaged parts
Poor Mower performance	Mower line length is too short	Correct line length is 15 inches. When the line is less than 1/2 of this length, replace the line.
Mower vibrates	Mower line lengths are substantially different	Adjust mower line to approximately equal lengths
	Loose nuts or bolts	Check all bolts and nuts, including engine bolts
	Broken mower head	Replace broken part
Mower head does not retain line	Mower Head Chassis Dirty	Clean mower head
	Broken line retainer	Replace line retainer
	Mower line not correct size	Use a 0.155" (4mm) diameter mower line

NOTE: Please see the engine manual for a full troubleshooting guide for any engine issues.

SLOPE GUIDE

Use this guide to determine slope angle. Do Not mow on a slope greater than 15 degrees.

- A 10 degree slope is a hill that increases in height at approximately 1.76 feet (53.6 CM) in 10 feet (304.5 CM).
- A 15 degree slope is a hill that increases in height at approximately 2.68 feet (81.7 cm) in 10 feet (304.5 cm).



WARNING

USE EXTREME CARE AT ALL TIMES AND AVOID SUDDEN TURNS OR MANEUVERS. FOLLOW OTHER INSTRUCTIONS IN THIS MANUAL FOR SAFETY IN MOWING ON SLOPES. OPERATE A MOWER ACROSS THE FACE OF SLOPES, NEVER UP OR DOWN SLOPES. USE EXTRA CARE WHEN OPERATING ON OR NEAR SLOPES AND OBSTRUCTIONS.

SERVICE AND ADJUSTMENT

How to Change Engine Oil

Be sure the engine is not operating and is located on a level surface before checking or refilling oil. Engine should be warm for easy removal of oil.

1. Detach spark plug wire and move away from spark plug. If the engine uses a battery, disconnect at negative terminal.
2. Remove dipstick and carefully tip the engine toward the dipstick side to empty oil from oil fill area. Empty oil into a suitable oil container and dispose of oil properly. SEE FIGURE 7
3. Tip engine back onto a level surface and fill with appropriate oil to the top of the marking on the dipstick (SEE FIGURE 8). DO NOT OVERFILL. For proper oil capacity and specification, see the engine manufacturer's instructions.
4. Reinsert dipstick and tighten.

How to Replace the Mower Line

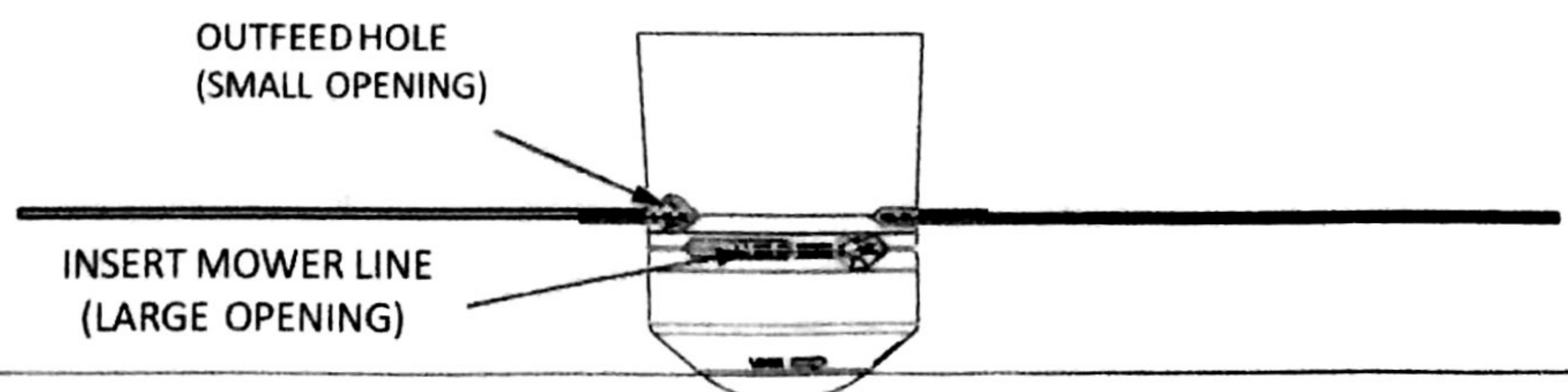
For the best performance, use a heavy gauge (0.155" (4 mm) diameter) mower line. Cut the length of the mower line to 15" (381 mm). Use the length guide, located on the shield, to make sure the mower line is the correct length. Place one end of the mower line at location "A" and bend it along the raised portion of the shield. Cut line at location "B". SEE FIGURE 9

NOTE: Do not allow the length of the lines to vary more than one inch. This is important to make sure the mower head is balanced and does not vibrate.

To extend the life of the mower line, keep the mower line moist. If not kept moist, the nylon mower line will become dry and brittle. Keep extra mower line in a can of water. The line will then stay flexible and easy to change. A flexible line will also last much longer.

1. Stop the engine. Wait for all moving parts to stop.
2. Remove the worn mower line from the line retainer by pulling on exposed 1" line from outfeed hole. SEE FIGURE 10
3. Push one end of the new mower line through the insertion hole in the head. SEE FIGURE 10
4. Push the line in until approximately 1" (25 mm) is exposed on the outfeed side.
5. Repeat for each of the four locations. Make sure the line length is the same at all four locations.

FIGURE 10: Replace Mower Line



WARNING

BEFORE YOU INSPECT, CLEAN OR SERVICE THE MOWER, STOP THE ENGINE. MAKE SURE THAT ALL MOVING PARTS HAVE STOPPED. DISCONNECT THE WIRE FROM THE SPARK PLUG.

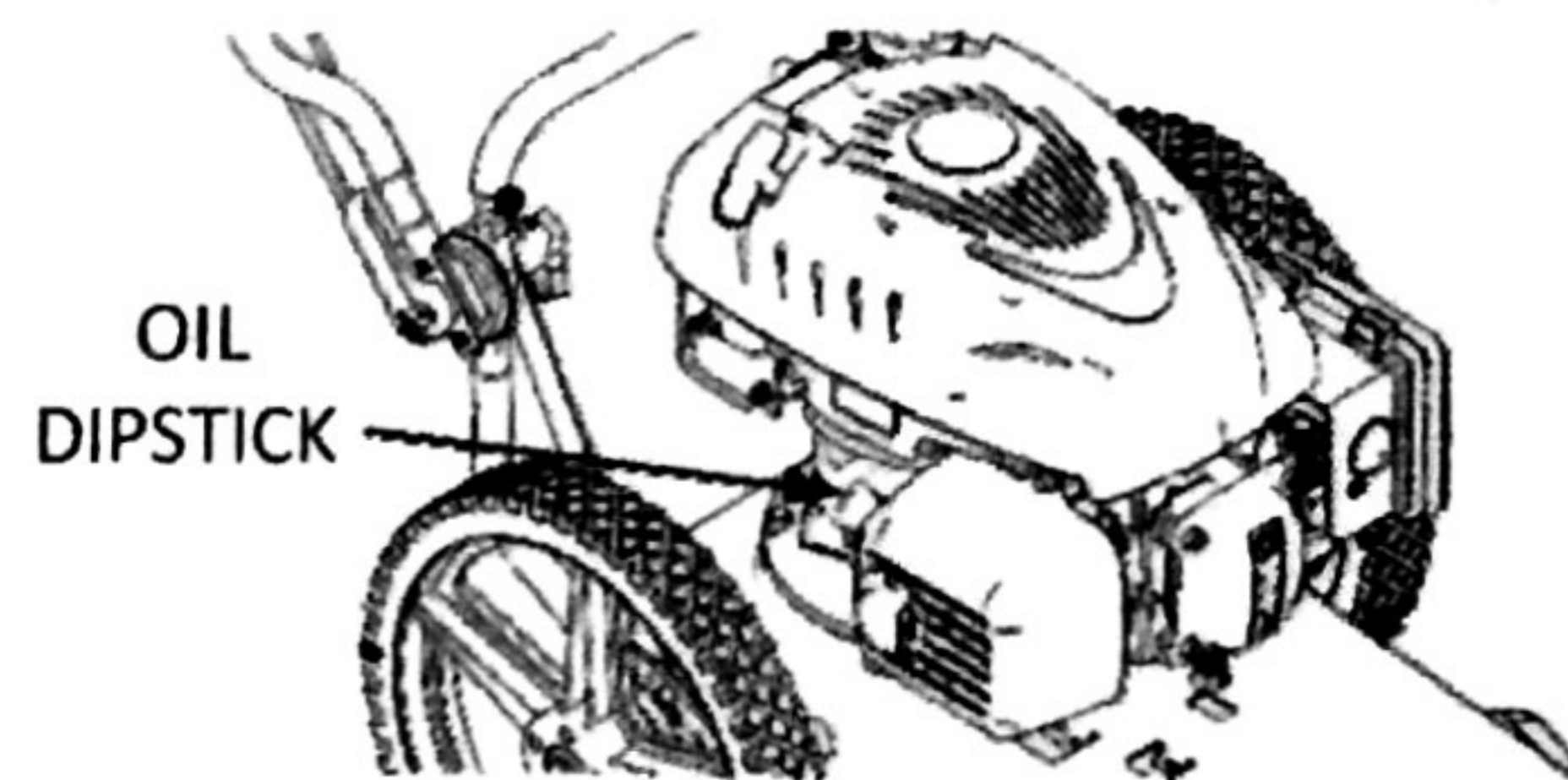


FIGURE 7: Oil Dipstick Location.

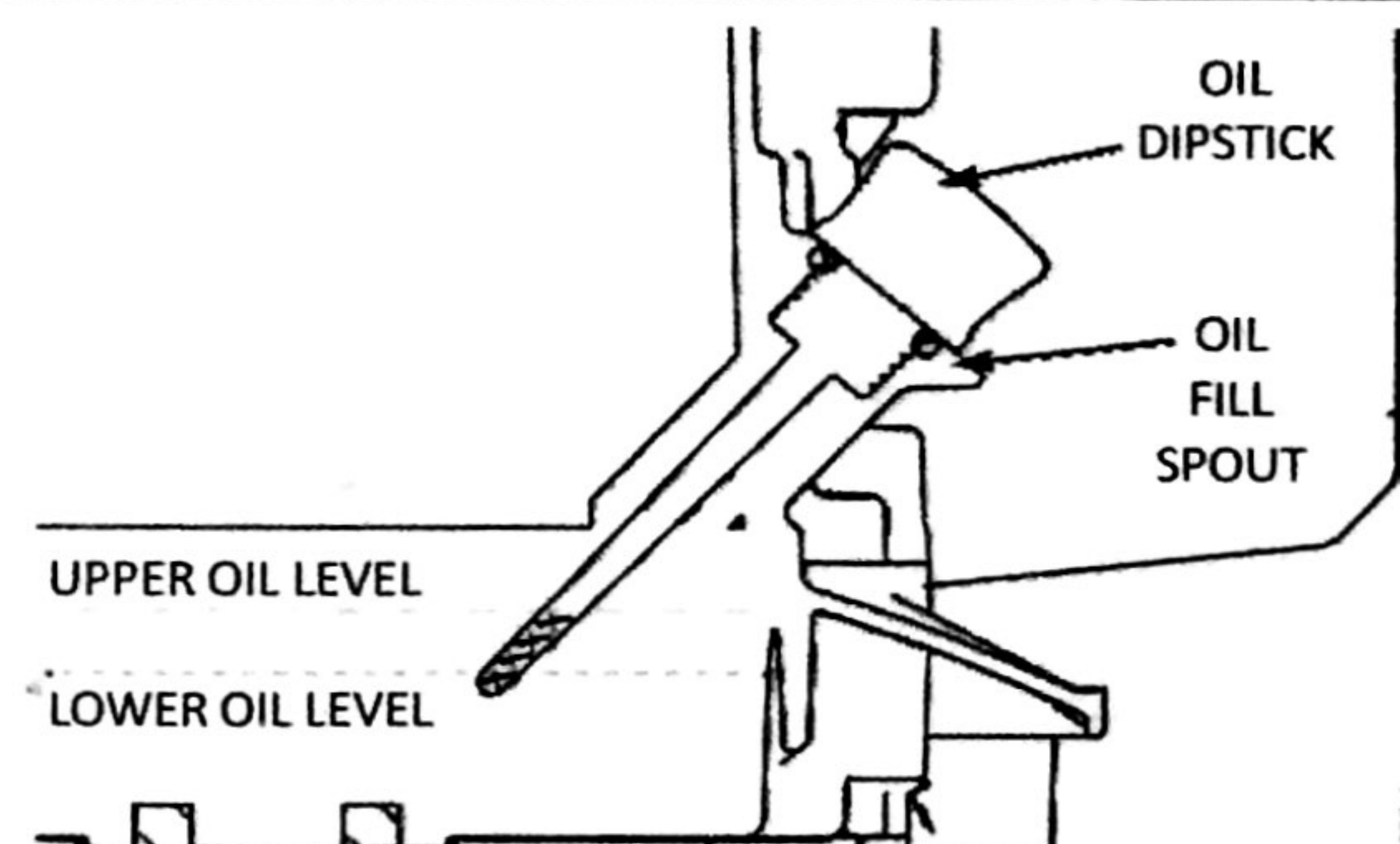


FIGURE 8: Dipstick And Oil Levels.

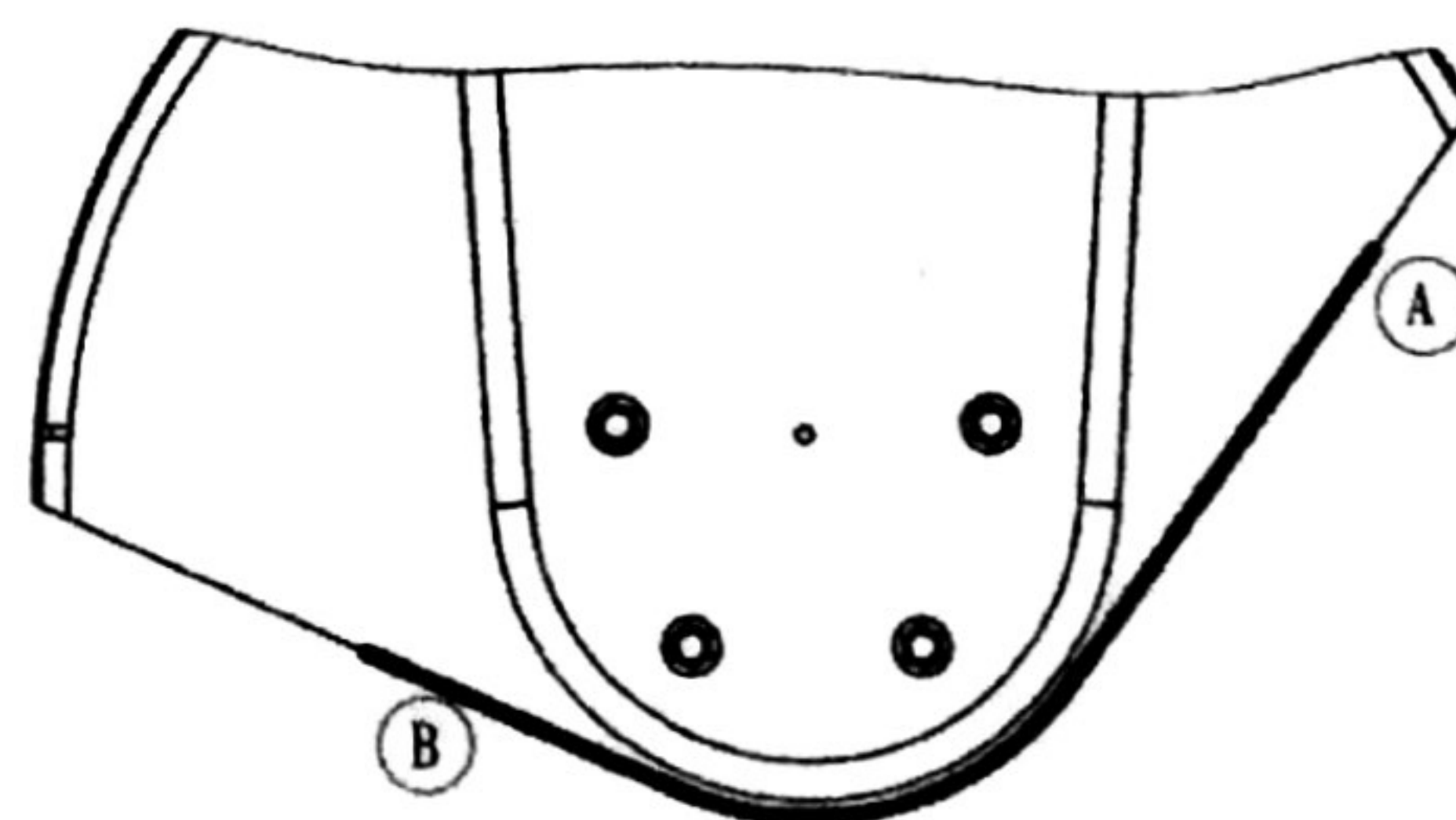


FIGURE 9: Mower Line Measurement Guide

WT56B WHEELED TRIMMER OWNER'S MANUAL

To Remove the Wheels

To detach the wheels, loosen the axle bolts and remove the wheel. Reverse instructions to reattach tire. SEE FIGURE 11

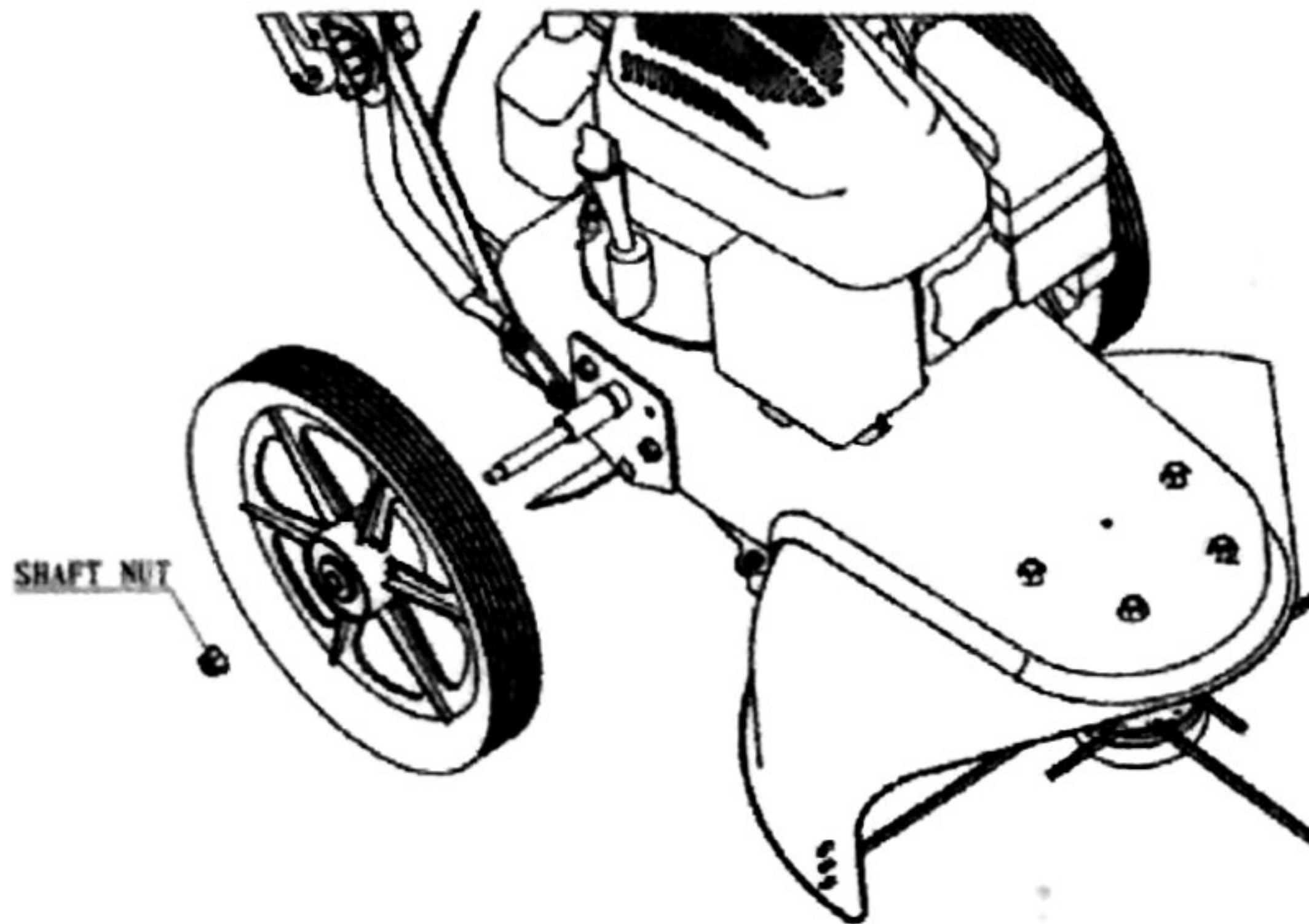


FIGURE 11: Removing the Wheels.

How to Adjust the Height/Angle of the Handle

Use the cam levers on each side of the handle to adjust the height of the handle. SEE FIGURE 12

1. Hold the handle with one hand and open both cam levers until the ratchet teeth are disengaged. Do not remove the nuts.
2. Move the handle up or down to the desired position, then align the ratchet teeth. Make sure both sides of the handle are level.
3. Tighten (lock) the lever.

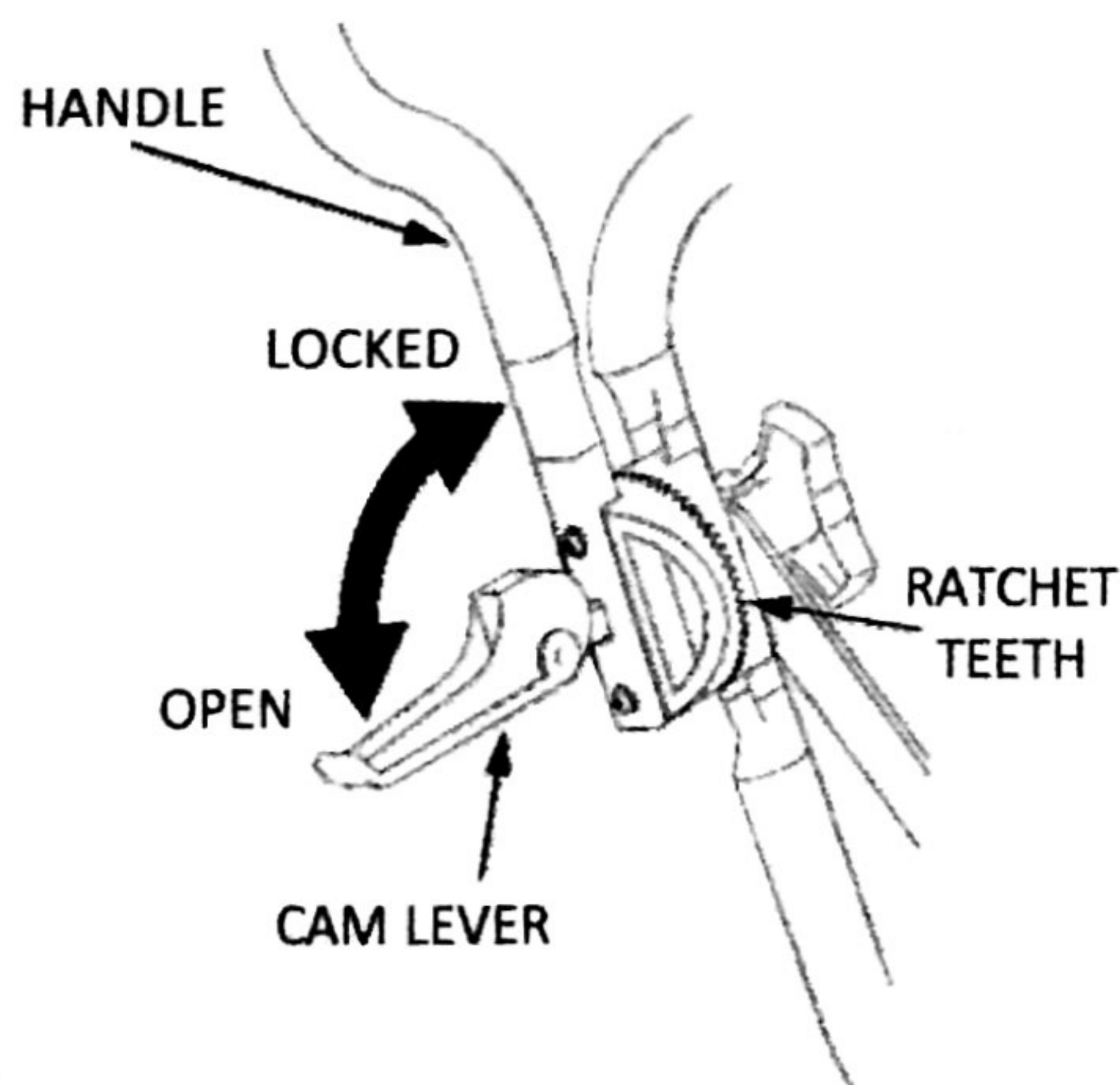


FIGURE 12: Adjusting The Height Of The Handle. (Lever shown in OPEN position)



WARNING

BEFORE YOU SET THE HEIGHT OF THE CUT, STOP THE ENGINE. WAIT FOR ALL MOVING PARTS TO STOP. ALLOW THE ENGINE TO COOL AND DISCONNECT THE SPARK PLUG WIRE.

How to Set the Height of the Cut

The height of the cut can be set using three different height bump heads. The recommended cutting height for the average yard is two (2) inches. SEE FIGURE 13

1. Stop the engine. Wait for all moving parts to stop.
2. Grasp the bump head with your hand and rotate in the direction of the arrows to the unlock position. Lift off head.

NOTE: If the bump head is tight, a screw drive or similar sized metal rod can be inserted in the bump head holes to assist in removal.

3. Install alternate bump head and tighten in direction of arrows to the lock position.

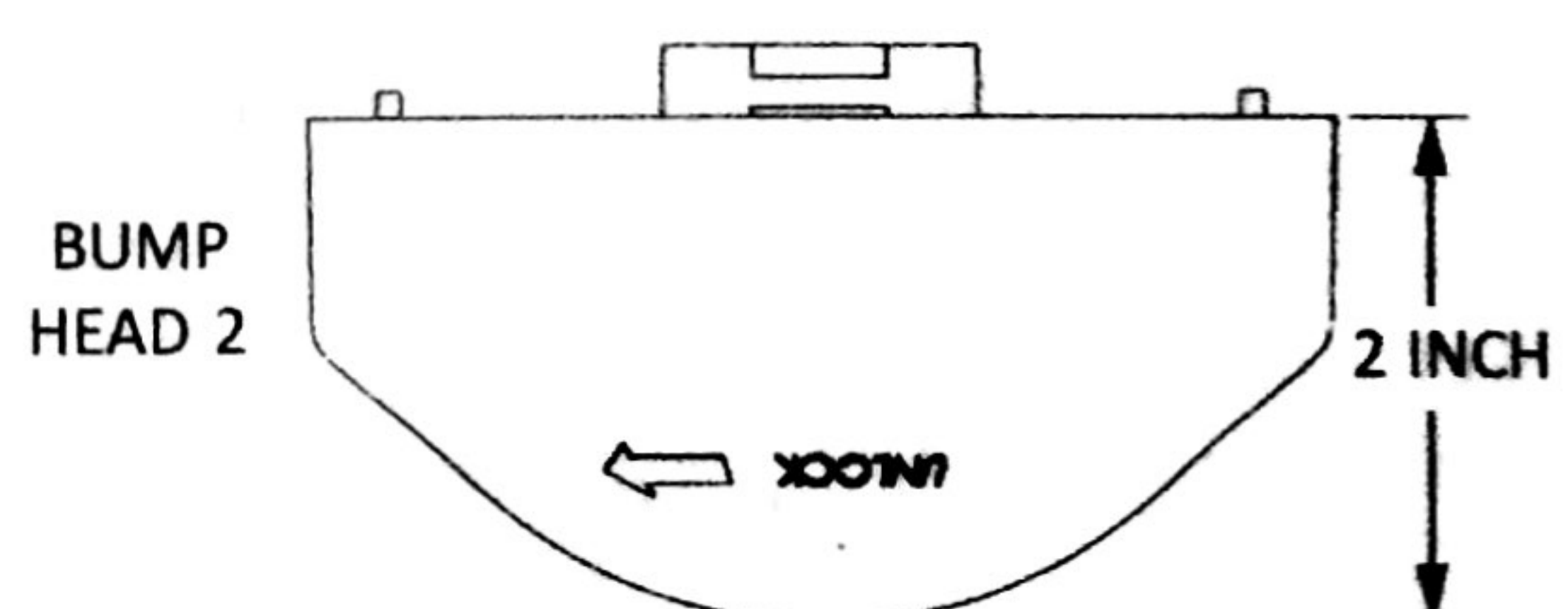
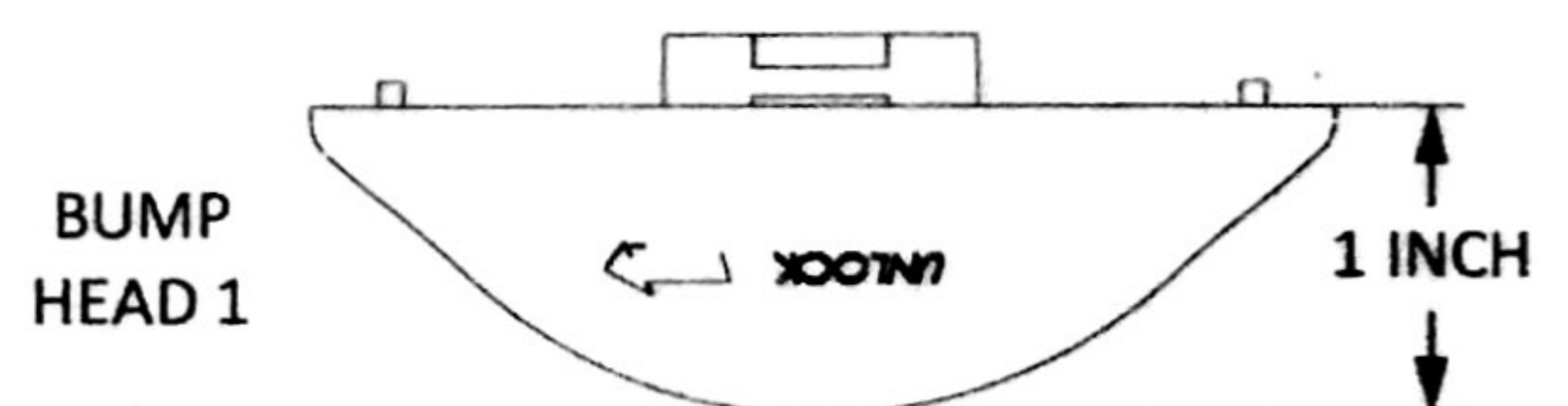


FIGURE 13: Setting The Height Of Your Cut With Bump Heads.

WARRANTY

This product is warranted in accordance with legal regulations for a 24 month period effective from the date of purchase by the first user.

This product will not be covered if used in a commercial application.

This warranty covers all material or production failures, it does not include: defects from normal wear and tear, parts such as, bearings, brushes, cables, air cleaning elements, brake pad, clutch disc, tyre, wheel, recoil starter rope, belts, cutter blades, plugs, lubricant oils and grease or accessories. Damage or defects resulting from abuse, accidents or alterations, natural fading of painted or plated surfaces, sheet peeling and other natural deterioration.

Any damage that occurs from the use of non-genuine Cobra parts will not be covered.

We reserve the right to reject any claim where the purchase cannot be verified or when it is clear that the product was not maintained properly. (Clean ventilation slots, carbon brushes and serviced regularly)

Expenses incidental to the warranty claim that are not covered;

-Compensation for loss of time, commercial loss or rental costs of substitute product.

-Costs incurred for transportation to and from the dealership.

Any damage that occurs from the following will not be covered; exposure of the product to smoke and soot, chemical agents, bird droppings or other animal waste, seawater, sea breeze, salt or other environmental phenomena.

Any damage resulting from operating methods other than those indicated in the owner's manual will not be covered.

Your purchase receipt must be kept as proof for date of purchase. Your un-dismantled mower must be returned to your dealer in an acceptably clean state, accompanied by your proof of purchase.

Please Register Your Mower

If your dealer did not collect registration information from you, please take a few minutes and register your purchase with Cobra.

You can register by completing and mailing the registration card that should be in the box or by going online to www.cobragarden.co.uk and clicking on Product Registration.

Before using the lawn mower, all mower operators must read this manual

ENVIRONMENT


Should your machine need replacement after extended use, do not put it in the domestic waste but dispose of it in an environmentally safe way.

COBRA

**WT56B
WHEELED TRIMMER
OWNER'S MANUAL**



EC DECLARATION OF CONFORMITY

EC Declaration of Conformity	
We herewith declare,	Cobra Garden Machinery Henton & Chattell Ltd, London Road, Nottingham NG2 3HW UK
That the following machine complies with the appropriate basic safety and health requirements of the EC Directive based on its design and type, as brought into circulation by us.	
In case of alteration of the machine, not agreed upon by us, this declaration will lose its validity	
Machine Description:	Walk behind trimmer – petrol powered
Machine Type:	WT56B (LM1073)
Displacement	161 cm ³
Max, Cutting width	560 mm
Measured sound power level:	101.1dB(A)
Guaranteed sound power level:	102dB(A) Notified Body for EC Directive 2000/14/EC amended by 2005/88/EC Intertek Testing Services Shanghai, Building No.86, 1198 Qinzhou Road (North), Caohejing Development Zone, Shanghai 200233, China
Applicable EC Directives	2000/14/EC amended by 2005/88/EC 2006/42/EC 2004/108/EC
Applicable Harmonized Standards	EN 14910:2007+A1:2009 EN 11094:1991 EN 3744:1995
Authorized Signature/Date/Place	 Peter J. Chaloner 02-09-2015
Title of Signatory	General Manager
Name and address of the person authorized to compile the technical file	Cobra Garden Machinery Henton & Chattell Ltd, London Road, Nottingham NG2 3HW United Kingdom