



Flymo[®]

Product
Range
2024

Easier by Design

No matter your garden task,
we've got you covered.



Lawn

Lawnmowers, Grass Trimmers, Edgers and Robotic Lawnmowers



Tree & Hedge

Hedge Trimmers, Long reach Hedge Trimmers and Shears



Clean & Tidy

Blower Vacs, Weeders and Pressure Cleaner



A unique heritage

Since inventing the hover mower more than 55 years ago, Flymo has continued to be a market leading manufacturer of effective and affordable garden care products. Our passion for innovation is what defines us. With constant design and technological development at the heart of everything we do, you can be sure our team of experts are relentless in their quest to deliver outstanding products that you can trust.

Part of the Husqvarna Group, a leading global producer of outdoor power products, quality comes as standard. Through materials and construction, the use of the latest engineering techniques plus stringent quality control testing, you can rest assured all Flymo products are built to last.

We take our commitment to the environment seriously and constantly challenge ourselves and our supply chain, pioneering solutions for improved efficiency and the smarter use of resources.

Helping save trees, our new online interactive catalogue is a smarter way to discover the product that fits you best. Easy to navigate, packed with hints and tips, grab a cuppa and explore the world of Flymo.

FIND OUT MORE:

<https://www.husqvarnagroup.com/en/sustainability>



Through the Husqvarna Group Sustainovate programme, by 2025 we aim to:

Reduce CO₂

emissions by 35% across our value chain

Resource Smart

Launch 50 resource-smart innovations

Empower 5 million

customers and colleagues to make sustainable choices

Contents

Gardening has never been simpler to navigate, choose to be an automated, cordless or classic gardener. From a click to your door we are easier by design.

Look out for the
interactive buttons
for product video's and articles






click to flip to this section

Robotic

- Introduction to Robot Lawnmowers
- Flymo Bluetooth App
- EasiLife Robotic Lawnmowers
- UltraLife Robotic Lawnmowers
- Robotic Accessories
- GARDENA Smart App







click to flip to this section

Battery

- Introduction to Battery
- Choose your Battery
- Introduction to POWER FOR ALL
- POWER FOR ALL Wheeled Lawnmowers
- POWER FOR ALL Grass Trimmers
- POWER FOR ALL Hedge Trimmers
- POWER FOR ALL Pressure Washer
- POWER FOR ALL Weeder
- POWER FOR ALL Shears
- POWER FOR ALL Blower
- Flymo Battery Wheeled Lawnmowers
- Flymo Battery Grass Trimmers
- Flymo Battery Hedge Trimmers




click to flip to this section

Electric

- Introduction to Electric Lawnmowers
- Introduction to Hover Lawnmowers
- Hover Non Collect
- Hover Collect
- Introduction to Wheeled Lawnmowers
- Wheeled Lawnmowers
- Introduction to Trimmers
- Trimmers
- Introduction to Hedge Trimmers
- Hedge Trimmers
- Chainsaw
- Garden Vacs and Blowers
- Multi-Packs




click to flip to this section

More

- Flymo Accessories
- Gardening Calendar
- Product Specification Tables
- Specification Icons Explained

Flymo Fact

Robotic Lawnmowers were invented over 50 years ago!



We have you covered
With a full range of accessories
for all your gardening needs

Find us on







**Peace of
mind built in**

All robot mowers come
with 3 years warranty



*Register to extend your warranty to 3 years for free. Your new product comes with a 2 year manufacturer's warranty. You must register to extend to 3 years. The warranty is from the date of purchase. Subject to the terms and conditions of the warranty.

**Robot lawnmowers have
come a long way since they were
invented over 50 years ago.**

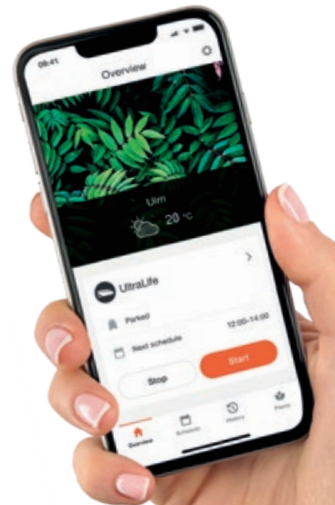


Time can't be stopped so spend it wisely

Everyone is busy these days. Busy juggling work, children, friends and life in general. Choosing how you spend your time is one of life's pleasures. For many people time spent cutting the lawn is a necessary chore. Time that could be better spent doing things you enjoy with those you love.

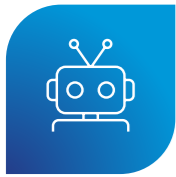
Our range of robot lawnmowers have been created with this in mind. With straight forward installation and intuitive set up, our robot lawnmowers are packed with cutting edge technology and clever features to give you a perfectly manicured lawn, that you don't need to spend your time cutting.

Let us explain exactly what they are, how they work and how to choose one that's right for you.



**Easy set up.
Takes the leg work
out of mowing.**





What is a robotic lawnmower?

In simple terms it's a machine that cuts the grass for you. After an initial set up process they're fully autonomous in operation, returning to their charging station when necessary.

**ALL YOU NEED
IN ONE BOX**



Things to consider when purchasing a robotic lawnmower.



SIZE OF GARDEN This is one of the most important factors when choosing a robotic lawnmower. Our lawnmowers are clearly labelled so you can see the optimal cutting area for each one.



ACCESS TO POWER You must be able to run a low voltage power cable to the charging station so you can keep your mower charged.



LAWN SLOPES Robotic mowers handle a variety of slopes – make sure you check out the product to ensure it will work on yours.



SMART PHONE INTERFACE all of our Robotic lawnmowers can now be controlled via an app.



SAFETY FIRST – always important especially if you have children and pets running around. All our robotic lawnmowers have Lift, tilt and collision technology which ensures the blades stop spinning when lifted.

1 Choose position



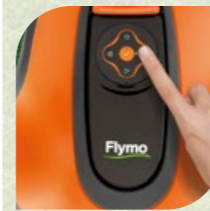
Before you use your robot the first thing you need to choose is a position for your charging station (this needs to be on the edge of the lawn you want to cut – not on a path/patio) It can even be positioned in a corner. Consider how far away the power supply is as you'll need to plug it in.

2 Install boundary & guide wire



Then you need to place the boundary wire along the area you want to cut and around obstacles e.g. trees and flower beds. This involves pegging in the boundary wire using the pegs provided. The boundary wire signals to the robot that it has reached an area that does not require cutting. You then need to lay the guide wire out from the centre of the charge station and connect it to the boundry wire. This is used to set multiple start points and to guide the robot back to the charging station. This is a little time consuming but only needs to be done once. Think of all those hours you're going to save not having to cut the lawn again!

3 Program

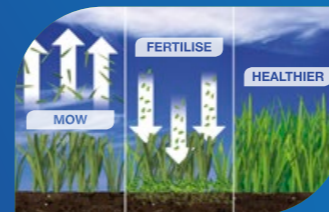


Place your robot in the charging station, turn on the power and programme your robot. There's a simple and intuitive interface so you're ready to go in no time.

An even finish

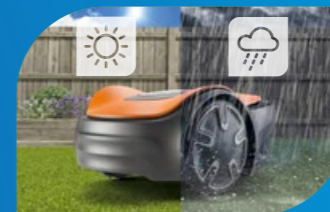
Our patented guide wire technology and multiple start points ensure your robot evenly cuts all of your lawn leaving no unsightly track marks, so you get a nice even finish.

No grass box to empty



The robot only cuts a small length of grass each time, so the cuttings simply 'mulch' into the lawn providing natural nutrients resulting in a greener and much healthier lawn.

Intelligent cutting

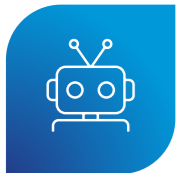


With LAWSENSE our robotic mowers detect when the grass is growing and automatically adjusts the cutting schedule.

It knows the weather



They even know if it's too cold to cut the lawn using FROSTSENSE, so stays at home until it's warm enough to mow. The robot can still cut in the rain.

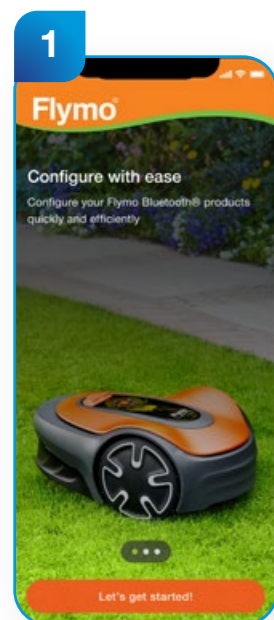


Let's make life easy

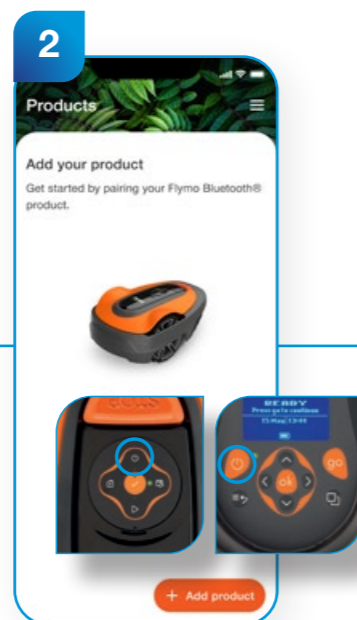
For added flexibility, EasiLife and EasiLife Go robotic lawnmowers come with access to the Flymo Bluetooth App*.

With intuitive control at your fingertips, the app provides FREE access to additional features and fully customisable scheduling options giving you added flexibility, direct from your smartphone.

Set up is simple in 3 easy steps:

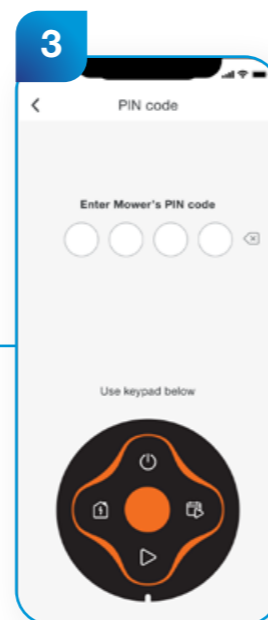


Let's get started



Pair with EasiLife

Switch EasiLife off then on. It automatically enters pairing mode & appears in the app



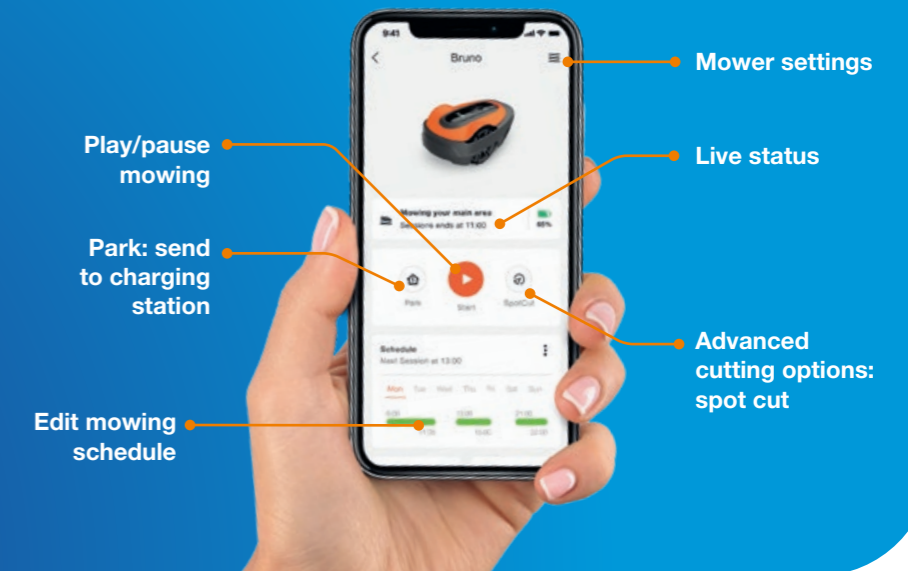
Choose PIN

Set your own security PIN code for mower and app

*as the app is in constant development, screens may differ from what is shown

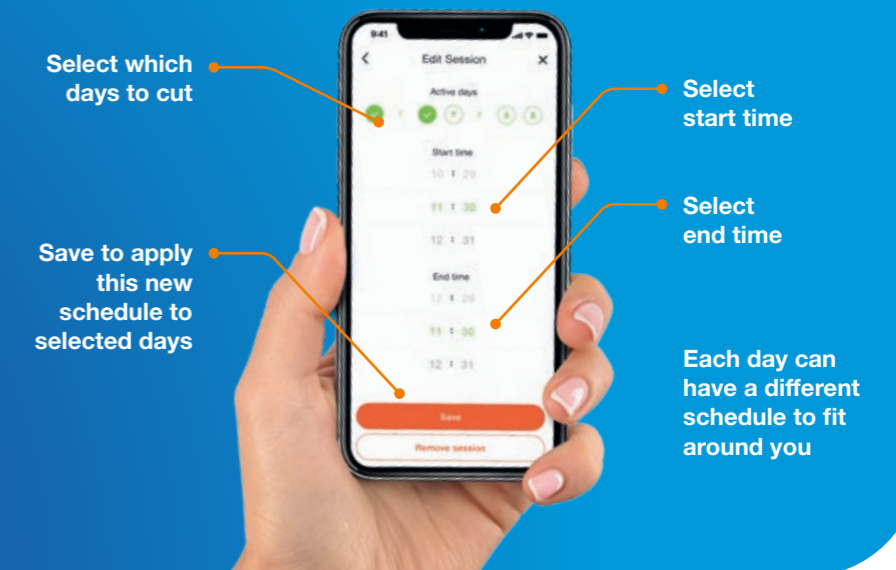
What can it do?

The intuitive App allows you to edit mowing schedules, play or pause mowing, park the mower and even programme advanced cutting options.



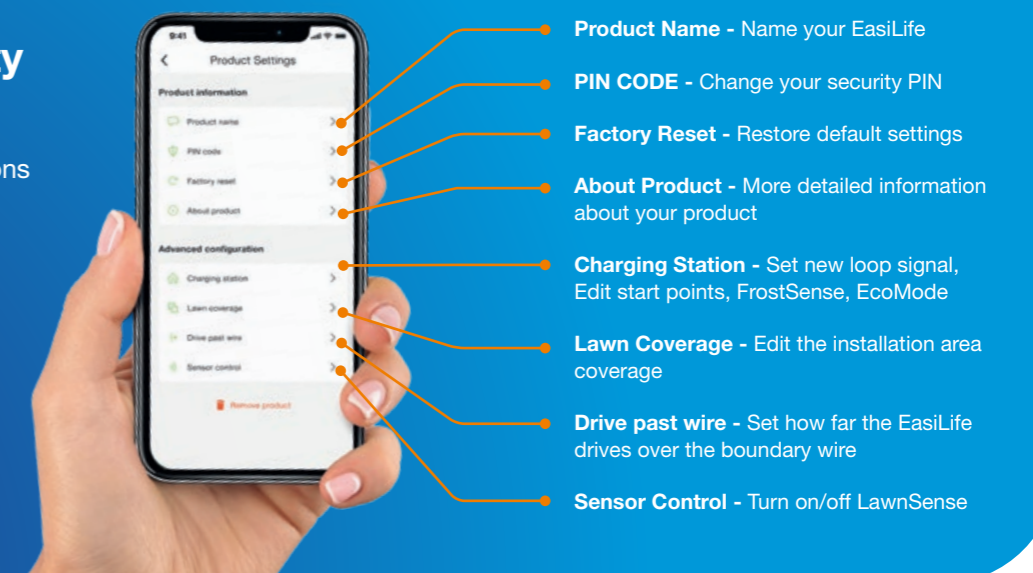
Setting a schedule

Setting your cutting schedule couldn't be easier. You simply select which days you'd like your robot to cut; select a start and end time and save your settings. You can actually have a different schedule for each day to fit around you.



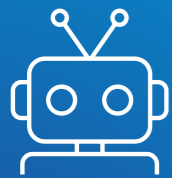
Added flexibility

The EasiLife App is packed with other functions that make using your robot remotely really straight forward.



Download the app now





Robotic Lawnmowers

FEATURING



LAWNSENSE
Detecting grass growth, it automatically adjusts the schedule to suit conditions. Ensures an even cut and protects the lawn



FROSTSENSE
Cutting when there is a frost damages the lawn, with FrostSense it stays at home until it's warm enough to mow



How to install
your mower



EasiLife
GO 150



EasiLife
GO 250



EasiLife
GO 500

For further
product
details
click here

| | | | |
|----------------------|--------------------------|--------------------------|--------------------------|
| Maximum Working Area | 150m ² +/-20% | 250m ² +/-20% | 500m ² +/-20% |
| Navigation System | Irregular Pattern | Irregular Pattern | Irregular Pattern |
| Battery Capacity | 2.1Ah/18V | 2.1Ah/18V | 2.1Ah/18V |
| Cutting Height | 20-50mm | 20-50mm | 20-50mm |
| Slope | Up to 14°/25% | Up to 14°/25% | Up to 14°/25% |
| Bluetooth App | Yes | Yes | Yes |

EasiLife GO 200 & 400

A compact robotic lawnmower with a simple Push & Go interface and advanced smartphone control.



HEIGHT



KEYPAD



SAFETY



SLOPE



EasiLife
GO 200 EasiLife
GO 400

| | | |
|----------------------|--------------------------|--------------------------|
| Maximum Working Area | 200m ² +/-20% | 400m ² +/-20% |
| Navigation System | Irregular Pattern | Irregular Pattern |
| Battery Capacity | 2.1Ah/18V | 2.1Ah/18V |
| Cutting Height | 20-50mm | 20-50mm |
| Slope | Up to 14°/25% | Up to 14°/25% |
| Bluetooth App | Yes | Yes |

Imagine... no more time spent cutting the lawn enabling you to reclaim your spare time to do the things you love.



A HEALTHIER, GREENER LAWN
Regular mowing returns fine grass clippings back into the lawn which acts as a natural fertiliser



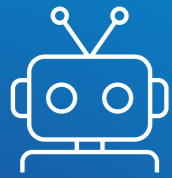
QUICK SCHEDULING
At your desired start time, simply push the scheduling button to set the mowers daily routine



SAFETY FIRST
Lift, tilt and collision sensor technology ensure blades stop spinning when lifted and guides the mower away from obstacles



PASSAGESENSE
A special mowing pattern that allows the mower to cut and navigate through narrow passages



Robotic Lawnmowers

EasiLife 800

Designed for gardens up to 800m² the EasiLife 800 is a fully automatic robotic lawnmower that gives you a tidy lawn with zero effort.



Spend your time doing what you love, not cutting your grass. Even if you've got a large garden!



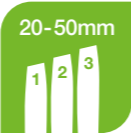
FEATURING



MOWS EVERY CORNER OF THE LAWN
PassageSense, guide wire technology & programmable start points assist navigation around the lawn without leaving tracks



EXTRA MOWING FLEXIBILITY
Functions designed to fit around your lifestyle: Spot Cut, Override, Park or Second Area



HEIGHT



KEYPAD



SAFETY



SLOPE

| | |
|----------------------|--------------------------|
| Maximum Working Area | 800m ² +/-20% |
| Navigation System | Irregular Pattern |
| Battery Capacity | 2.1Ah/18V |
| Cutting Height | 20-50mm |
| Slope | Up to 19°/35% |
| Bluetooth App | Yes |



Accessories to keep your robot in shape

To keep your robotic lawnmower in optimal condition, we have created a range of easy to use, robust storage solutions for use in your garage or shed - as well as outside, protecting your robot from the elements.

Additional blades, connectors and wires are also available along with a repair kit and wheel brushes.



RAIN OR SHINE WE HAVE YOU COVERED



WALL HANGER

Space saving storage for the Flymo EasiLife robotic lawnmower and charging station during winter months



ROBOT HOUSE

Protect your Flymo EasiLife robotic lawnmower and charging station against direct sunlight and rain



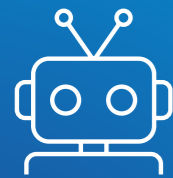
WINTER PROTECTION BOX

Keeps cable connectors safe & protected over winter



WHEEL BRUSHES

Keep the wheels free of dirt and grass on your Flymo EasiLife robotic lawnmower (not compatible with GO models)



Robotic Lawnmowers

NEW UltraLife 1500

Our biggest robotic lawnmower yet! The UltraLife 1500 can cut up to a massive 1500m² lawn. The smartest way to a beautiful lawn and garden.



Top Feature Product



smart Gateway
UltraLife 600, 800, 1200 and 1500 all come with a GARDENA smart Gateway in the box

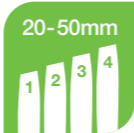
FEATURING



TRIM TO EDGE
Achieving a perfect close-edge cut —down to just 1cm, even at solid edges —has never been easier. The UltraLife takes care of the details to deliver a next-level neat and tidy lawn.



DUOCONNECT
Control your UltraLife from up to 10m via the Flymo app, or anywhere in the world via the GARDENA smart system App.



HEIGHT



KEYPAD



SAFETY



SLOPE



| | |
|----------------------|---------------------------|
| Maximum Working Area | 1500m ² +/-20% |
| Navigation System | Irregular Pattern |
| Battery Capacity | 2.1Ah/18V |
| Cutting Height | 20-50mm |
| Slope | Up to 25°/35% |
| Bluetooth App | Yes |

UltraLife Accessories

To keep your robotic lawnmower in optimal condition we have created a range of intuitive and easy to use accessories.



WHEEL BRUSHES

Keep the wheels free of dirt and grass on your Flymo UltraLife robotic lawnmower.



ROBOT HOUSE

Protect your Flymo UltraLife robotic lawnmower and charging station against direct sunlight and rain.



ANTI-COLLISION RADAR

The robotic lawnmower carefully avoids objects on the lawn, ensuring their protection and minimising any wear or damage.



How to install your mower



NEW UltraLife 600



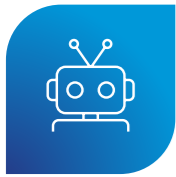
NEW UltraLife 800



NEW UltraLife 1200

For further product details [click here](#)

| | | | |
|----------------------|--------------------------|--------------------------|---------------------------|
| Maximum Working Area | 600m ² +/-20% | 800m ² +/-20% | 1200m ² +/-20% |
| Navigation System | Irregular Pattern | Irregular Pattern | Irregular Pattern |
| Battery Capacity | 2.1Ah/18V | 2.1Ah/18V | 2.1Ah/18V |
| Cutting Height | 20-50mm | 20-50mm | 20-50mm |
| Slope | Up to 25°/35% | Up to 25°/35% | Up to 25°/35% |
| Bluetooth App | Yes | Yes | Yes |



Flymo® + **GARDENA®**
smartsystem

Gardening the smart way

GARDENA and Flymo have teamed up to bring you a world of smart gardening. You can now connect the Flymo UltraLife robotic lawnmower and GARDENA watering devices with the cloud for seamless connectivity. Unlock a host of features, accessible through the Gardena smart App.

Explore the features of the GARDENA smart App



Auto Schedule

The GARDENA smart App helps you set schedules to keep your garden devices under control: when to water your plants, when to mow, and even adjust schedules based on daylight to protect nocturnal animals.



smart Home

smart Home meets smart garden. Control your UltraLife by voice with Amazon Alexa and Google Home.



EasyConfig

Easy and guided set up. The GARDENA smart App provides step-by-step guidance for setting up your own smart system. With clear illustrations, tips and helpful setup wizards.



LONA™ Intelligence

The next level of smart lawn care: AI-based technology with location tracking that learns, maps and adapts to your garden, you can also define 'no mow' zones.



Plant Library

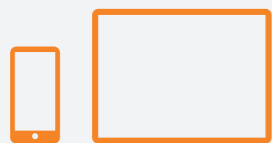
Discover everything you need to know about plants, from when they bloom to the climate they thrive in.



Connect via **Bluetooth®** or the **GARDENA smartsystem**

The **easy** way

Control your UltraLife with the Flymo Bluetooth® App from a distance of up to 10m.



Bluetooth®: Smartphone/Tablet

The **smart** way

Using the included smart Gateway and GARDENA smart App will give you the freedom to care for your garden from anywhere in the world.

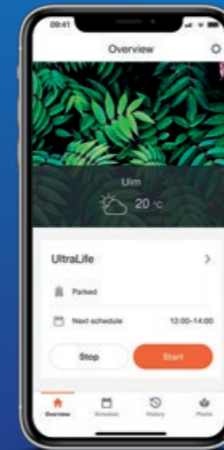


GARDENA smart system: Smartphone/Tablet + Internet Router + smart Gateway

Online registration required

Flymo UltraLife and GARDENA smartsystem

To establish the connection to the smart system, you need the GARDENA smart App and the smart Gateway



GARDENA smart App

Your entire garden is always at your fingertips with the free GARDENA smart App. Mowing the lawn and watering has never been so convenient.



smart Gateway

Connecting your GARDENA smart App to your smart garden, via your home WiFi or LAN cable.



Download the
Flymo Bluetooth®
App



Download the
GARDENA
smart App

From smart to smarter

Now you can mow your lawn remotely why not make your garden even smarter, introducing GARDENA's smart watering devices.



smart Water Control - at the tap

Water a single garden area with tap water. The smart Water Control lets you remotely control your garden taps for perfect results - simply controlled via the GARDENA smart App.



smart Irrigation Control - permanently installed and underground

Effortlessly water multiple areas of your garden with an underground irrigation system. The smart Irrigation Control manages up to six irrigation valves - each of which can be independently controlled via the GARDENA smart App.



smart Sensor

Measure the soil moisture and temperature in your garden or in planters and check it in the GARDENA smart App. Using the smart Sensor with a smart Water Control or Irrigation Control, you can save water and ensure the right level of watering.





Why choose battery?

- ✓ **Freedom to roam** without worrying about a cord
- ✓ **Zero emissions**
- ✓ **Less maintenance** than petrol products
- ✓ **Low noise**
- ✓ Typically, **lighter than petrol** based machines

Lighter with no cords to worry about, our battery options make perfect sense when it comes to mowing, trimming, hedging or blowing.

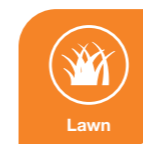


Is it time to cut the cord?



Battery Power! It's the way forward, especially as it helps protect the environment. Our range of eco-friendly, re-chargeable battery products are not only better for the environment, they have a wealth of user benefits too. With a battery product you're free to roam around the garden without a cord.

There's a Flymo battery product to cover all areas of garden care.



Lawn



Tree & Hedge



Clean & Tidy

The Flymo cordless range has two types of battery:



POWER FOR ALL Alliance 18V Battery – One single battery to power all tools, compatible with all 18V products from leading brands, for more information please see our POWER FOR ALL page.

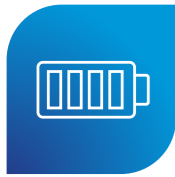


Flymo Battery Power – This includes an interchangeable 20V battery and an integrated Battery.

Lighter with no cables to worry about, our battery options give you the freedom to tackle jobs anywhere in your garden.

Don't get tied down.
Battery gives you the power to roam.



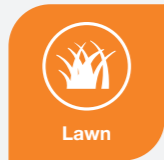


Choose your battery

We know buying the right battery product can be daunting so Flymo have made choosing the right product and battery for you as easy as...

1

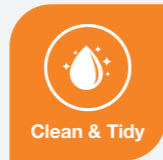
What is the job to be done?



Lawn



Tree & Hedge



Clean & Tidy

2

Choose your Battery...



**POWER FOR ALL Alliance
18V Battery System**

One battery to power all tools,
compatible with all 18V products
from multiple brands.

PAGES 24-35



Flymo Battery Power
20V interchangeable
battery and integrated
Battery options.

PAGES 36-41

3

Choose a Flymo product
from our range



Peace of mind built in



All **POWER FOR ALL**
products come with 3
years warranty



All Flymo **battery
powered products** come
with 2 years warranty



*Register to extend your warranty to 3 years for free on POWER FOR ALL products. Your new product comes with a 2 year manufacturer's warranty. You must register to extend to 3 years. The warranty is from the date of purchase. Subject to the terms and conditions of the warranty.

**Register to extend your warranty to 2 years for free on Flymo Battery Powered products. Your new product comes with a 1 year manufacturer's warranty. You must register to extend to 2 years. The warranty is from the date of purchase. Subject to the terms and conditions of the warranty.

***Batteries and chargers are excluded from this extended manufacturer's warranty.



The Flymo 18V POWER FOR ALL Battery System

One of the largest cross-brand 18V battery systems.
THE battery for your home and garden.

What is the alliance?

The **POWER FOR ALL ALLIANCE** is one of the largest cross-brand battery alliances of leading manufacturers worldwide. Offering a great variety of applications for your entire home and garden.

It's 100% compatible with a wide range of home tools and appliances, from lawn mowers to drills, saws, and sanders.

The **POWER FOR ALL ALLIANCE** members include many leading manufacturers worldwide. Together we offer the greatest variety of applications for your home and garden. We are united by the common goal of improving people's quality of life. This is what we stand for – today and in the future.

The battery

POWER FOR ALL 18V batteries use only specially selected and tested Li-Ion cells, with in built protection against overloading, overheating, deep discharge, self discharge and memory effect. All ensure a long battery life.

The benefits



One of the largest cross-brand battery systems.



100% compatibility within the POWER FOR ALL ALLIANCE.



Greatest application variety for your entire home.



System flexibility expandable by tools across many brands.



Save space. Save money. Protect the environment.



Battery competence since 1969.



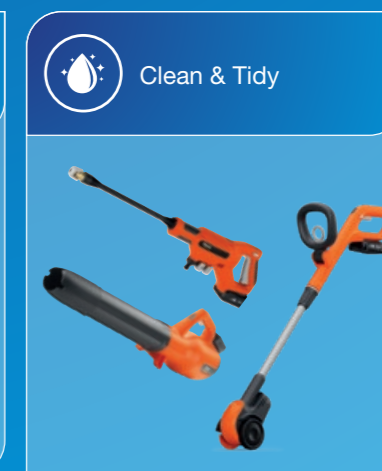
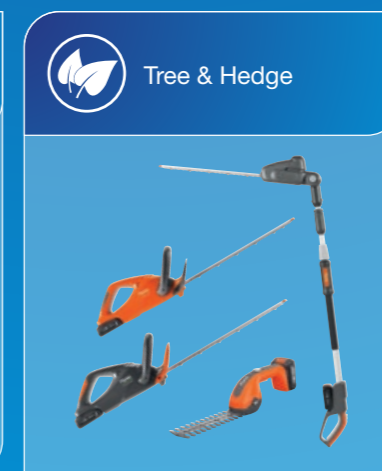
Watch the range overview

One battery for
100+ Tools

The battery for your home and garden.
One single battery for all tools across multiple brands.



Our range covers





Choosing the right option, the power is in your hands

Are you new to **POWER FOR ALL** or are you a seasoned pro? We've created two options to cater for everyone. KITS come with everything you need to use your new product, whilst **PRODUCT ONLY** saves you money and the planet.

The great benefit of the **POWER FOR ALL** Alliance, is that you can use your new battery across multiple brands and product types. So, if you already have a **POWER FOR ALL** battery you only need buy the **PRODUCT ONLY** which is supplied without the Battery and Charger.

Added flexibility

Need to trim & edge? cut bushes? clean your garden furniture? Then choose from our selection of **POWER FOR ALL** products with no need to buy another battery.

Ready to Use KIT

New to POWER FOR ALL?

Choose a Ready to Use **KIT**, this includes everything you need to get you started - Your Product, Battery and Charger*



What's in the box*



*Some products (Lawnmowers) require 2 batteries for operation so 2 batteries and 2 chargers are supplied as standard.

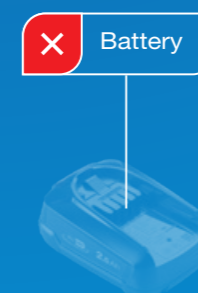
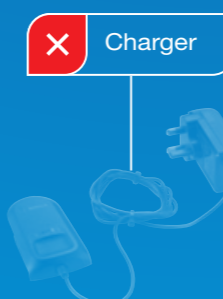
Product Only

Seasoned Pro!

You've already joined the revolution and own a **POWER FOR ALL** product or **POWER FOR ALL** battery. Simply buy the product you like and use the battery and charger you already have.



What's in the box*





Battery Lawnmowers



NEW 18V SimpliMow 300 4.0 KIT

| | |
|------------------|----------------------------|
| Battery | 18V (1x18V) (4.0Ah Li-Ion) |
| Blade Length | 30cm |
| Cutting Heights | x3 (30-60mm) |
| Grassbox | 25 Litres |
| Charge Time | 124 mins |
| Recommended Area | 150m ² |
| Weight | 8.65kg inc battery |

For further product details click here



What are the benefits?



*A number of variables will affect the maximum area capacity such as excessive grass length and density, moisture, moss or thatch and the chosen cutting height. As such the maximum area stated cannot always be guaranteed.

18V SimpliMow 320 4.0 KIT

Everything you need to take control of your lawn.



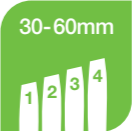
What are the benefits?



Top Feature Product



BLADE



HEIGHT



WEIGHT
INC. BATTERIES



BATTERY



GRASSBOX



CUTTING HEIGHT ADJUSTMENT

At the push of a button, choose the best cutting height for the conditions of the lawn you're working on.



EDGE CUTTING

No need to worry about tricky lawn edge work—the SimpliMow cuts closely along lawn borders so you can spend less time on trimming.



SHARPENED BLADE

The blade delivers an incredible quality cut and with excellent airflow provides good collection performance, leaving your lawn looking neat and tidy.

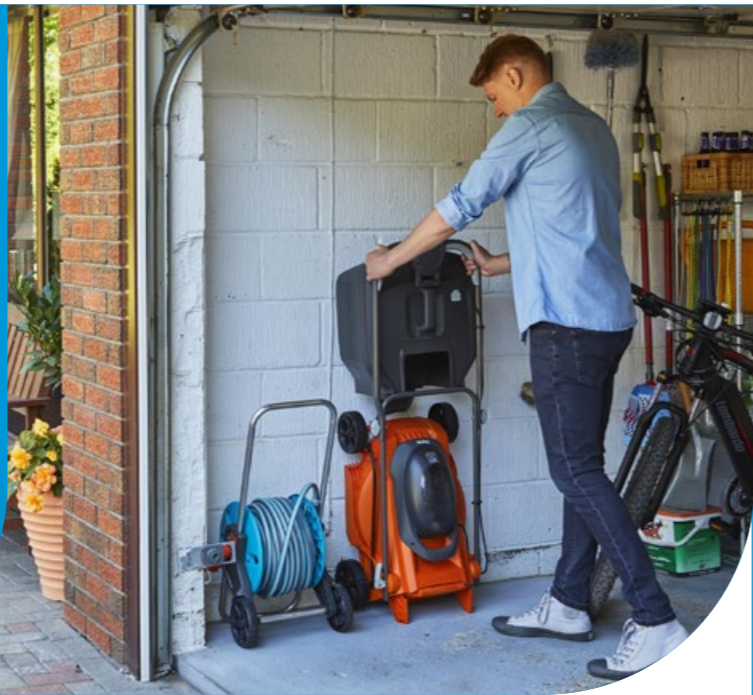


HEIGHT ADJUSTABLE HANDLE

With three handle heights to choose from, you're sure to find a position that's comfortable for you.



Battery Lawnmowers



36V EasiStore 340R 2.0 KIT

| | |
|------------------|----------------------------|
| Battery | 36V (2x18V) (2.0Ah Li-Ion) |
| Blade Length | 34cm |
| Cutting Heights | x5 (20-60mm) |
| Grassbox | 35 Litres |
| Charge Time | 124 mins |
| Recommended Area | 150m ² |
| Weight | 11.3kg inc batteries |

For further product details click here



What are the benefits?



*A number of variables will affect the maximum area capacity such as excessive grass length and density, moisture, moss or thatch and the chosen cutting height. As such the maximum area stated cannot always be guaranteed.

36V EasiStore 380R 2.0 KIT

Battery wheeled lawnmower with extra features to make mowing easy.



What are the benefits?



Top Feature Product



BLADE



HEIGHT



WEIGHT INC. BATTERIES



BATTERY



GRASSBOX



SPACE SAVING STORAGE

Keep your shed or garage tidy with a vertical storage position



ALWAYS KNOW YOUR POWER

LED display clearly indicates remaining battery capacity



STRIPED LAWN FINISH

A roller provides a beautiful stripe effect to your lawn



BATTERY FREEDOM

No restricting power cord for greater freedom and flexibility



Battery Lawnmowers



36V UltraStore 340R 2.5 KIT

| | |
|------------------|----------------------------|
| Battery | 36V (2x18V) (2.5Ah Li-Ion) |
| Blade Length | 34cm |
| Cutting Heights | x5 (20-60mm) |
| Grassbox | 35 Litres |
| Charge Time | 154 mins |
| Recommended Area | 200m ² |
| Weight | 11.5kg inc batteries |

36V UltraStore 380R 2.5 KIT

| | |
|------------------|----------------------------|
| Battery | 36V (2x18V) (2.5Ah Li-Ion) |
| Blade Length | 38cm |
| Cutting Heights | x5 (20-60mm) |
| Grassbox | 45 Litres |
| Charge Time | 154 mins |
| Recommended Area | 230m ² |
| Weight | 12.6kg inc batteries |

For further product details click here



What are the benefits?

36V UltraStore 380R 4.0 KIT

Battery wheeled lawnmower with advanced features for an ultra mowing experience.



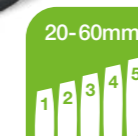
What are the benefits?



Top Feature Product



BLADE



HEIGHT



WEIGHT
INC. BATTERIES



BATTERY



GRASSBOX

Designed with storage in mind, the UltraStore range has multiple quick release handle levers to easily fold down for compact storage.



SPACE SAVING STORAGE

Keep your shed or garage tidy with a vertical storage position



ALWAYS KNOW YOUR POWER

LED display clearly indicates remaining battery capacity



MORE SUPPORT & MORE COMFORT

Twin lever handles with ergonomically shaped palm rest for maximum comfort



STRIPED LAWN FINISH

A roller provides a beautiful stripe effect to your lawn

*A number of variables will affect the maximum area capacity such as excessive grass length and density, moisture, moss or thatch and the chosen cutting height. As such the maximum area stated cannot always be guaranteed.



Battery Grass Trimmers



Top tips on how to use your trimmer



18V EasiTrim 250 2.0 KIT

| | |
|------------------|--------------------|
| Battery | 18V (2.0Ah Li-Ion) |
| Cutting Width | 25cm |
| Charge Time | 124 mins |
| Recommended Area | 110m² |
| Weight | 2.4kg inc. battery |



18V UltraTrim 260 2.5 KIT

| | |
|------------------|--------------------|
| Battery | 18V (2.5Ah Li-Ion) |
| Cutting Width | 26cm |
| Charge Time | 154 mins |
| Recommended Area | 130m² |
| Weight | 3.2kg inc. battery |

For further product details click here

All models are also available as **PRODUCT ONLY** (excluding battery & charger) see specification pages

*Trimming distance may vary depending on workload.

18V EasiTrim Plus 230 2.0 KIT

This completely adjustable grass trimmer is ideal for those hard to reach areas, with the ability to adjust the trimming angle by up to 60 degrees, so you can trim under garden furniture and low hanging bushes.



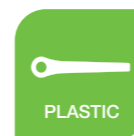
CUTTING



BATTERY



WEIGHT



BLADE



QUICK TIPS

When you're finished trimming your grass, it's a good idea to charge up your battery so you're ready to go next time.



What are the benefits?

Top Feature Product



LED BATTERY DISPLAY
Clearly indicates the remaining battery life



BATTERY POWERED
No restricting power cord for greater freedom and flexibility



ADJUSTABLE TRIMMING ANGLE
Quickly changes to trim under low obstacles working position



FULLY ADJUSTABLE
Telescopic shaft and top handle for optimal comfort



Battery Hedge Trimmers



Five things you need to know about hedge care

With no cables to worry about you can trim with ease



For further product details click here



18V EasiCut 450 2.0 KIT

| | |
|------------------|--------------------|
| Battery | 18V (2.0Ah Li-Ion) |
| Blade Length | 45cm |
| Blade Gap | 16mm |
| Charge Time | 124 mins |
| Recommended Area | 175m ² |
| Weight | 2.8kg inc. battery |



18V UltraCut 500 2.5 KIT

| | |
|------------------|--------------------|
| Battery | 18V (2.0Ah Li-Ion) |
| Blade Length | 50cm |
| Blade Gap | 16mm |
| Charge Time | 154 mins |
| Recommended Area | 190m ² |
| Weight | 2.9kg inc. battery |

All models are also available as **PRODUCT ONLY** (excluding battery & charger) see specification pages

*Cutting distance may vary depending on workload.



SAFETY FIRST

We recommend you use safety goggles, gloves and sturdy footwear when cutting your hedge.



18V UltraCut Reach 420 2.5 KIT

Extra long reach cordless hedge trimmer for a precise finish on the tallest of hedges.



What are the benefits?



QUICK TIPS

Creating a straight edge to a large hedge is simple.

Thread a piece of string through a bamboo shoot and tie each end of the string securely to a stake in the ground at either end of the hedge.

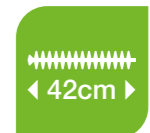
This can then be used as a cutting guide to ensure that the hedge is evenly cut.



WEIGHT



BATTERY



BLADE



GAP



CUTS TALL HEDGES

Cut at heights of up to 3 metres when the telescopic handle is fully extended



HIGH AND LOW TRIMMING

90° adjustable trimmer head for convenient cutting of high hedge tops and low ground cover



ALWAYS KNOW YOUR POWER

LED display clearly indicates battery capacity



BATTERY FREEDOM

No restricting power cord for greater freedom and flexibility



Top Feature Product

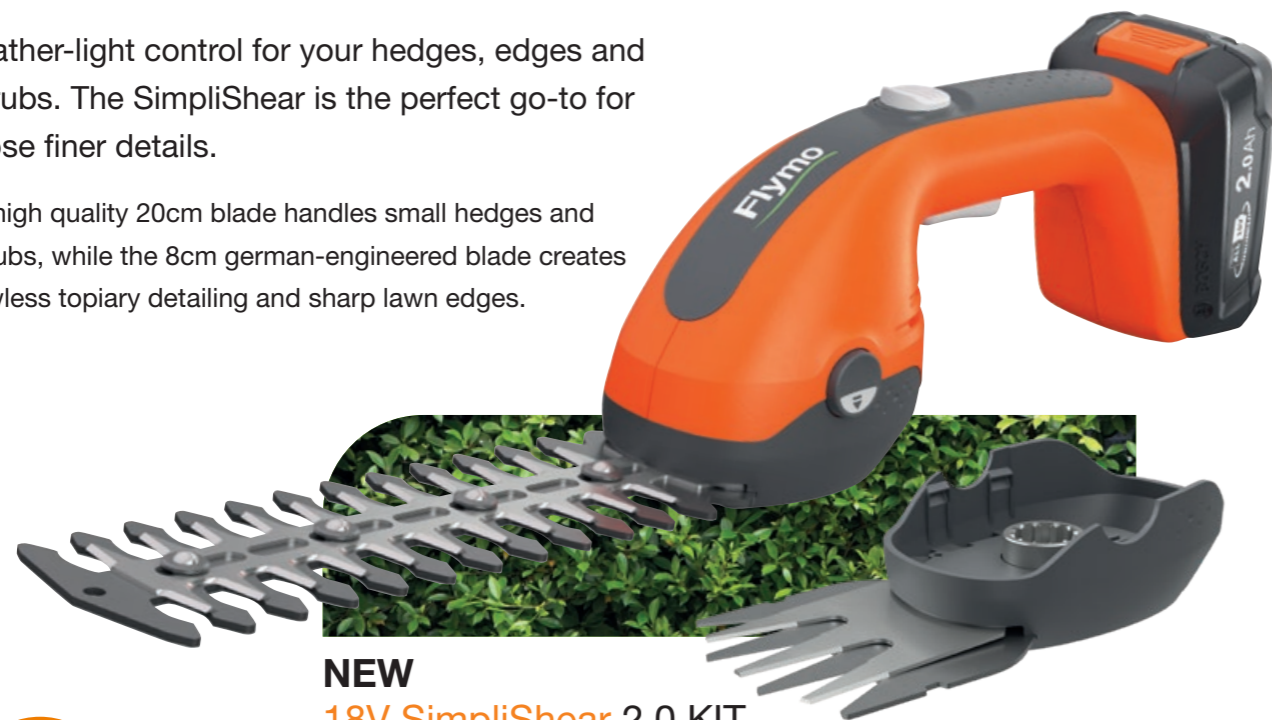


Battery Shears

Tidy edges, perfect hedges

Feather-light control for your hedges, edges and shrubs. The SimpliShear is the perfect go-to for those finer details.

Its high quality 20cm blade handles small hedges and shrubs, while the 8cm german-engineered blade creates flawless topiary detailing and sharp lawn edges.



NEW 18V SimpliShear 2.0 KIT

| | |
|-------------------------|----------------------|
| Power | 18V (2.0Ah Li-Ion) |
| Battery Run Time | 220 min (8cm blade) |
| Battery Run Time | 280 min (20cm blade) |
| Charge Time | 124 mins |
| Weight with Grass Blade | 0.95 kg inc. battery |
| Weight with Shrub Blade | 1.15 kg inc. battery |



What are the benefits?

For further product details [click here](#)

All models are also available as **PRODUCT ONLY** (excluding battery & charger) see specification pages



2 IN 1

The 20cm blade is for cutting, shaping and finishing and the 8cm blade for topiary detailing and lawn edging.



TOOLLESS BLADE CHANGE

Fitting the right blade for the job is simple and tool-free.



VERTICAL STORAGE

Upright storage position saves space and makes resuming your work easy.



CORDLESS POWER

Battery powered for complete cordless freedom.



BALANCED, LIGHTWEIGHT DESIGN

Light in the hand for ease of use and precise control.



Battery Weed Brush



Makes weeding a breeze

Go beyond the results of a traditional tool with no need for manual effort. The EasiWeeder is here to make your life easier. Plus, it comes with 2 brushes, Nylon and Steel so you can swap to the best brush for the job.



Steel Wire Brush - this is more suited for harder wearing surfaces and heavier/denser weeds or moss

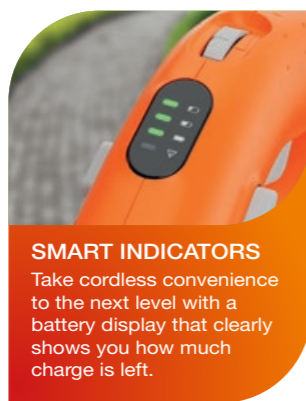


Nylon Brush - This is more suited for more gentle cleaning and softer more delicate surfaces that may be prone to scratching.

Please always test a small area on your chosen surface before continuing with the whole task.



SUPPORT WHEEL
The wheel keeps the weed brush stable while you work—producing a neat finish.



SMART INDICATORS
Take cordless convenience to the next level with a battery display that clearly shows you how much charge is left.



ADJUSTABLE HANDLE
The front handle can be adjusted to ensure you find the most comfortable holding position.



TELESCOPIC SHAFT
Easily position the telescopic shaft with no need for tools, finding the working height that's kindest on your back.



What are the benefits?

All models are also available as **PRODUCT ONLY** (excluding battery & charger) see specification pages

Top Feature Product

NEW 18V EasiWeeder 2.0 KIT

Enjoy a weed-free patio and driveway - without the work

For further product details [click here](#)



18V LITHIUM-ION BATTERY



X2 BRUSHES



40 MIN RUN TIME**



2.4 KG WEIGHT INC BATTERY



CENTRE GUIDE

A centre guide provides a clear line of sight to paving joints, ensuring the brush is positioned for the best results.



ADJUSTABLE BRUSH SPEED

Choose the right brush speed to suit any surface and task.



BATTERY POWER

Go beyond the results of traditional tools with no need for manual effort.



Battery Pressure Washer



Practical cleaning at home or on the go

This battery operated pressure washer works without restrictive power cables, giving you the flexibility you need to tackle cleaning tasks quickly and comfortably.



18V EasiClean Li

| | |
|-------------|--------------------|
| Battery | 18V (2.0Ah Li-Ion) |
| Flow Rate | 200L/H |
| Hose Length | 5m |
| Charge Time | 124 mins |
| Weight | 1.5kg |



*Max – Minimum Power 9 bar

Packed with features, all these products are designed to be lightweight and easy to use, helping you keep on top of your garden tasks.



No tap? No problem

EasiClean Li Plus

You really can go anywhere when you can take your water with you.

A portable water bag gives cleaning on-the-go a whole new meaning. You can even draw water from a natural water source such as a stream or lake thanks to the included hose.

For further product details [click here](#)



Li Plus comes with the addition of water bag and shampoo dispenser

Top Feature Product



VARIABLE CLEANING POWER
Choose from 0°, 15° or 40° cleaning angles on either the long or short lance depending on your task at hand



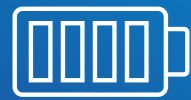
CORDLESS FREEDOM
No restricting power cord for greater freedom and flexibility



ACCESSORIES INCLUDED
Includes foam dispenser, 20L collapsible water bag



ALWAYS KNOW YOUR POWER
LED display clearly indicates battery capacity



Battery Blower



Whoosh without the wires

With variable speed control you can adjust the air speed to suit the task at hand. Making easy work of your garden clearing needs.



What are the benefits?



18V EasiClear 100 2.5 KIT

| | |
|------------------|---------------------|
| Power | 18V (2.5Ah Li-Ion) |
| Battery Run Time | 13-23 min-max |
| Air Speed | 100 KM/H |
| Charge Time | 154 mins |
| Weight | 1.8 kg inc. battery |



BATTERY POWERED
No restricting power cord for greater freedom and flexibility



LED BATTERY DISPLAY
Clearly indicates the remaining battery life



VARIABLE SPEED CONTROL
To easily adjust the airflow to suit the task at hand

All models are also available as **PRODUCT ONLY** (excluding battery & charger) see specification pages







Get a great lawn
all year round



Battery Lawnmowers



SimpliStore 300 Li

| | |
|--------------------|--------------------------|
| Battery | 2x20V (2.6Ah Li-Ion) |
| Blade Length | 30cm |
| Cutting Heights | x3 (25-65mm) |
| Grass Box Capacity | 30 Litres |
| Charge Time | 360 mins for 2 batteries |
| Recommended Area | 250m ² * |
| Weight (kg) | 8.8 inc. batteries |

SimpliStore 340 Li

| | |
|--------------------|--------------------------|
| Battery | 2x20V (2.6Ah Li-Ion) |
| Blade Length | 34cm |
| Cutting Heights | x5 (20-60mm) |
| Grass Box Capacity | 35 Litres |
| Charge Time | 360 mins for 2 batteries |
| Recommended Area | 200m ² * |
| Weight (kg) | 11.3 inc. batteries |

For further
product
details
click here

*A number of variables will affect the maximum area capacity such as excessive grass length and density, moisture, moss or thatch and the chosen cutting height. As such the maximum area stated cannot always be guaranteed.



EasiStore 300R Li

| | |
|--------------------|--------------------------|
| Battery | 2x20V (2.6Ah Li-Ion) |
| Blade Length | 30cm |
| Cutting Heights | x3 (25-65mm) |
| Grass Box Capacity | 30 Litres |
| Charge Time | 360 mins for 2 batteries |
| Recommended Area | 250m ² * |
| Weight (kg) | 8.8 inc. batteries |

EasiStore 340R Li

| | |
|--------------------|--------------------------|
| Battery | 2x20V (2.6Ah Li-Ion) |
| Blade Length | 34cm |
| Cutting Heights | x5 (20-60mm) |
| Grass Box Capacity | 35 Litres |
| Charge Time | 360 mins for 2 batteries |
| Recommended Area | 200m ² * |
| Weight (kg) | 11.3 inc. batteries |

For further
product
details
click here



SPACE SAVING STORAGE

Keep your shed or
garage tidy with a vertical
storage position



CLOSE EDGE CUTTING

Designed to allow a neater
and closer cut to edges,
borders and flowerbeds



EXTRA MOBILITY

Transport position
allows you to move
around with ease



BATTERY FREEDOM

No restricting power
cord for greater freedom
& flexibility

**Complete with 2 batteries



Battery Grass Trimmers

Cordless freedom

Lightweight integrated battery grass trimmer, perfect for small gardens, makes easy work of trimming the edges of your lawn.



Intergrated Battery



INTEGRATED BATTERY
Integrated charging port with LED indicator



ROTORCUT
Durable plastic blades for perfect cutting results



SPARE BLADE STORAGE
Store spare blades on the product

SimpliTrim Li

| | |
|------------------|--------------------|
| Power | 14.4V (2Ah Li-Ion) |
| Battery Run Time | Up to 40 minutes |
| Cutting Width | 23cm |
| Weight | 1.7kg |



Top tips on how to use your trimmer





Battery Hedge Trimmers



Five things you need to know about hedge care



Trim with ease and no worries about cables

Our range of cordless hedge trimmers give you the safety and freedom to keep your hedges neat and tidy.

All are designed with ease of use in mind so are lightweight, with a choice of 40cm and 50cm blades. The SabreCut XT 20V Li benefits from a telescopic handle ideal for cutting those hard to reach hedge tops.



Integrated Battery

SimpliCut Li

| | |
|------------------|--------------------|
| Power | 14.4V (2Ah Li-Ion) |
| Battery Run Time | Up to 60 minutes |
| Blade Length | 40cm |
| Blade Gap | 16mm |
| Weight | 2.1kg |



EasiCut 20V Li

| | |
|------------------|--------------------|
| Power | 20V (2.5Ah Li-Ion) |
| Battery Run Time | Up to 55 minutes |
| Blade Length | 50cm |
| Blade Gap | 16mm |
| Weight | 2.5kg |

For further product details click here

*Cutting time may vary depending on work load.



SAFETY FIRST

We recommend you use safety goggles, gloves and sturdy footwear when cutting your hedge.



SabreCut XT 20V Li

Powerful, lightweight and easy to use cordless long reach hedge trimmer.



QUICK TIPS

Creating a straight edge to a large hedge is simple.

Thread a piece of string through a bamboo shoot and tie each end of the string securely to a stake in the ground at either end of the hedge.

This can then be used as a cutting guide to ensure that the hedge is evenly cut.

EXTENDED REACH HANDLE UP 50CM

Top Feature Product

The 20V Lithium-Ion battery is compatible with:

- Contour 20V Li
- EasiCut 20V Li
- SabreCut XT 20V Li



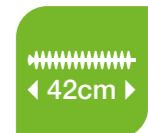
WEIGHT



RUN TIME



BATTERY



BLADE



GAP



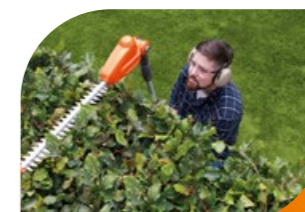
INTERCHANGEABLE BATTERY

Battery can be used on other 20V Lithium-Ion products



TELESCOPIC HANDLE

For an extended reach



TILTING HEAD

For convenient cutting of hedge tops



LOW LEVEL CUTTING

Ideal for cutting ground cover



Peace of mind built in

All Flymo electric powered products come with 2 years warranty



*Register to extend your warranty to 2 years for free on Flymo Battery Powered products. Your new product comes with a 1 year manufacturer's warranty. You must register to extend to 2 years. The warranty is from the date of purchase. Subject to the terms and conditions of the warranty.

*Batteries and chargers are excluded from this extended manufacturer's warranty.

Check out our comprehensive range of hover and wheeled lawnmowers - there's sure to be one that fits the bill!



Hover vs Wheeled

Do you roll, or do you hover?

Buying a new lawnmower can seem like a daunting task with so many different products to choose from.

To help make sense of the options and identify the best one for you, we've put together this buying guide so you can buy with confidence.

Hover vs. Wheeled Lawnmowers

There are two types of electric lawnmower – hover and wheeled. Before making any decision on which lawnmower to purchase, it's important to understand the slight differences in how they work. While both types of lawnmower cut the grass from above using a rotating cutting disc, there are a couple of subtle differences to be aware of.

Wheeled Lawnmower - has wheels which promotes the user to mowing the lawn in straight lines leaving a nice striped lawn.

Hover Mower - works by creating a cushion of air between the lawnmower and the grass, allowing the user to move the lawnmower in any direction making them much more manoeuvrable and lighter to use for a faster cut.

Love stripes?
Then choose a wheeled lawnmower with a rear roller.





What else should you consider?

Overall when comparing hover mowers vs. wheeled lawnmowers there is no clear winner. The perfect lawnmower is largely down to personal preference and the type of garden you own. Before buying your next lawnmower you should consider the size and shape of your lawn as these will determine the type of lawnmower you should purchase.



Do you want stripes?

If so, you should buy a wheeled rotary lawnmower preferably with a rear roller like those found in the EasiStore range.

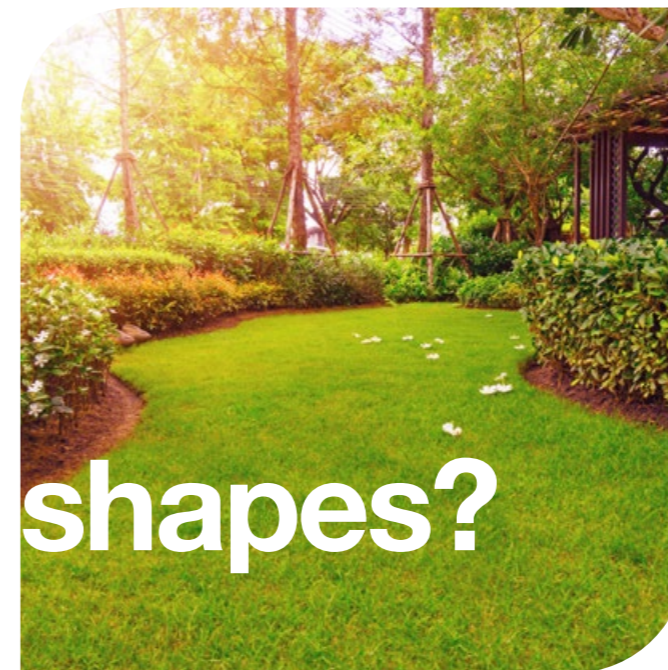
A rear roller adds stripes to the lawn by flattening the grass as you cut. Hover mowers by their very nature cannot have a roller as the weight of the roller would prevent the lawnmower from hovering on the cushion of air that they generate and require to cut the grass.



Does your garden have slopes?

If it does, a hover mower may be the better option.

They are often easier to push / pull up and down the slopes as they are lighter when walking forwards because of the cushion of air they rest on when cutting.



Is your lawn an irregular shape?

You may find that a hover mower is a better choice because it 'floats' on a cushion of air.

This enables them to be moved in all directions including side to side. The difficulty when using a rotary lawnmower on an irregular shaped lawn is that you will need to make a number of short movements to cut the grass in the hard to reach areas.



How to add stripes to your lawn



Buying for the first time?



The Weight

The weight may be a key consideration when buying your next lawnmower.

Weighing as little as 5.1kg, our hover mowers are some of the lightest on the market and are still packed with power, making cutting easy.



Construction

Something to consider if you like to be ready to go straight from the box.

One key advantage hover mowers have over rotary lawnmowers is that generally when you first buy one, they are ready to use out of the box, or require minimal assembly in comparison to a wheeled lawnmower. Rotary lawnmowers will typically require a little more work to build before you can use it.

Flymo Fact

If you want a striped lawn you will need to leave the grass slightly longer so that you can bend and flatten the grass to create the darker stripe.





Flymo Fact

The original hover mowers that were introduced were blue, then in 1977 they changed to **the famous Flymo Orange**



INTRODUCTION TO HOVER MOWERS

Are you ready for take off?

The British invention of the Hovercraft by Sir Christopher Cockerell was the inspiration for Swedish manufacturer, Karl Dahlman, to invent the flying lawnmower ...Flymo, for short. It wasn't long before the idea 'took off' and Flymo grew from strength to strength. The 1980's then saw the introduction of the first grass collecting hover mower.

The Hover Principle

The principle behind the Flymo air cushion lawnmower, is based on the Hovercraft, and although relatively simple in theory, is a lot harder to put into practice. The drive shaft of the motor powers a fan which is attached above the cutting blades. The impeller draws air from above the cutting housing which creates pressure on the underside, lifting the mower from the lawn.

Mowing on a cushion of air makes gardening quicker and easier. This unique design allows the user to mow in any direction, over flat paths, under bushes, down slight slopes, round trees, and when the lawn is cut, it's easy to carry and store away.

COLLECT

Hover collect

Integrated grass box to collect your clippings

NON COLLECT

Hover non collect

Grass clippings are returned to the lawn



The first hover in 1965



How does a hover work?



Non Collect Hover Lawnmowers

FEATURING



EASY TO MANOEUVRE
This lightweight lawnmower floats on a cushion of air making it highly manoeuvrable



LONG LIFE METAL BLADE
Provides a neater cut and is longer lasting than plastic blades



NON COLLECT



NON COLLECT



What are the benefits?

For further product details click here

SimpliGlide 300

| | |
|-----------------|--------------|
| Power | 1700 watts |
| Blade Length | 30cm |
| Cutting Heights | x4 (10-30mm) |
| Cable Length | 10m |
| Weight | 7.4kg |

SimpliGlide 330

| | |
|-----------------|--------------|
| Power | 1700 watts |
| Blade Length | 33cm |
| Cutting Heights | x4 (10-30mm) |
| Cable Length | 10m |
| Weight | 7.4kg |

SimpliGlide 360

Easy to use non-collect hover lawnmower, the SimpliGlide folds down for easy storage.



What are the benefits?



NON COLLECT

Top Feature Product

36cm
BLADE

10-30mm
HEIGHT

1800 Watts
POWER

7.6 KG
WEIGHT

Cutting Blade: Cut your lawn quickly with the help of an impressive 36cm wide cutting blade.



EASY TO MANOEUVRE
This lightweight lawnmower floats on a cushion of air making it highly manoeuvrable



LONG LIFE METAL BLADE
Provides a neater cut and is longer lasting than plastic blades



STORE ON THE WALL
Flat folding handles allow the lawnmower to hang up on the wall for space saving storage



POWERFUL MOTOR
High performance motor capable of cutting through even thick dense grass



Non Collect Hover Lawnmowers

FEATURING



EASY TO MANOEUVRE
This lightweight lawnmower floats on a cushion of air making it highly manoeuvrable



LONG LIFE METAL BLADE
Provides a neater cut and is longer lasting than plastic blades



NON COLLECT



NON COLLECT



What are the benefits?

For further product details click here

TurboLite 250

| | |
|-----------------|--------------|
| Power | 1400 watts |
| Blade Length | 25cm |
| Cutting Heights | x4 (11-31mm) |
| Cable Length | 10m |
| Weight | 5.1kg |

TurboLite 260

| | |
|-----------------|--------------|
| Power | 1400 watts |
| Blade Length | 26cm |
| Cutting Heights | x4 (11-31mm) |
| Cable Length | 10m |
| Weight | 5.1kg |





Hover Collect Lawnmowers

FEATURING



SPACE SAVING VERTICAL STORAGE
Simple storage solution for saving floor space. Simply fold the handles down and stand it up vertically



XL GRASS BOX VISION WINDOW
Allows you to see into the grass box so you know when its time to empty



COLLECT



COLLECT



What are the benefits?

For further product details click here

EasiGlide Plus 300V

| | |
|-----------------|--------------|
| Power | 1700 watts |
| Blade Length | 30cm |
| Cutting Heights | x4 (10-30mm) |
| Grassbox | 20 Litre |
| Weight | 8.5kg |

EasiGlide Plus 330V

| | |
|-----------------|--------------|
| Power | 1700 watts |
| Blade Length | 33cm |
| Cutting Heights | x4 (10-30mm) |
| Grassbox | 20 Litre |
| Weight | 8.5kg |

EasiGlide Plus 360V

COLLECT

Top Feature Product

Electric hover collect lawnmower offering space saving vertical storage, convenient cable storage and easy to empty grass box with XL vision window.



What are the benefits?



Packed with Features: Designed with the modern gardener in mind, the powerful EasiGlide Plus 360V makes light work of cutting your lawn.



EASY CABLE STORAGE

Equipped with cable storage hooks to quickly wind and unwind the cable with ease and keeps the cable tidy



SINGLE HAND GRASS BOX EMPTYING

Unique lift action makes it easier to remove and replace the grass box using only one hand



AMBIDEXTROUS HANDLES

Dual lever handles allow you to comfortably operate with either hand for greater flexibility and manoeuvrability



POWERFUL MOTOR

High performance motor capable of cutting through even thick dense grass



BLADE



HEIGHT



WEIGHT



POWER



GRASSBOX



Hover Collect Lawnmowers

FEATURING



EASY TO EMPTY GRASS BOX
Top loading grass box, makes it quick and easy to remove and empty with no spilling



LONG LIFE METAL BLADE
Provides a neater cut and is longer lasting than plastic blades



What are the benefits?

For further product details click here

EasiGlide 300V

| | |
|-----------------|--------------|
| Power | 1700 watts |
| Blade Length | 30cm |
| Cutting Heights | x4 (10-30mm) |
| Grassbox | 20 Litres |
| Weight | 8.3kg |

EasiGlide 330V

| | |
|-----------------|--------------|
| Power | 1700 watts |
| Blade Length | 33cm |
| Cutting Heights | x4 (10-30mm) |
| Grassbox | 20 Litres |
| Weight | 8.3kg |

EasiGlide 360V

COLLECT

Top Feature Product

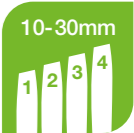
Electric hover collect lawnmower with convenient grass box vision window, cable storage and neatly folds away.



What are the benefits?



BLADE



HEIGHT



WEIGHT



POWER



GRASSBOX

Designed with storage in mind, the EasiGlide range has easy cable storage and folding handles.



EASY TO MANOEUVRE

This lightweight lawnmower floats on a cushion of air making it highly manoeuvrable



STORE ON THE WALL

Flat folding handles allow the lawnmower to hang up on the wall for space saving storage



EASY CABLE STORAGE

Equipped with cable storage hooks to quickly wind and unwind the cable with ease and keeps the cable tidy



GRASS BOX VISION WINDOW

Allows you to see into the grass box so you know when its time to empty



Hover Collect Lawnmowers

FEATURING



EASY TO EMPTY GRASS BOX
Top loading grass box, makes it quick and easy to remove and empty with no spilling



LONG LIFE METAL BLADE
Provides a neater cut and is longer lasting than plastic blades



What are the benefits?

EasiGlide 300

| | |
|-----------------|--------------|
| Power | 1700 watts |
| Blade Length | 30cm |
| Cutting Heights | x4 (10-30mm) |
| Grassbox | 20 Litres |
| Weight | 8.3kg |

EasiGlide 330

| | |
|-----------------|--------------|
| Power | 1700 watts |
| Blade Length | 33cm |
| Cutting Heights | x4 (10-30mm) |
| Grassbox | 20 Litres |
| Weight | 8.3kg |

For further product details click here

EasiGlide 360

COLLECT

Top Feature Product

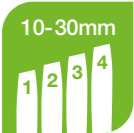
Electric hover collect lawnmower with convenient cable storage that neatly folds away.



What are the benefits?



BLADE



HEIGHT



WEIGHT



POWER



GRASSBOX

Got a larger garden? The impressive 36cm cutting blade covers more area than smaller blades, enabling you to cut your lawn quicker.



EASY TO MANOEUVRE

This lightweight lawnmower floats on a cushion of air making it highly manoeuvrable



STORE ON THE WALL

Flat folding handles allow the lawnmower to hang up on the wall for space saving storage



EASY CABLE STORAGE

Equipped with cable storage hooks to quickly wind and unwind the cable with ease and keeps the cable tidy



POWERFUL MOTOR

High performance motor capable of cutting through even thick dense grass



Hover Collect Lawnmowers

FEATURING



LONG LIFE METAL BLADE
Provides a neater cut and is longer lasting than plastic blades



STORE ON THE WALL
Flat folding handles allow the lawnmower to hang up on the wall for space saving storage



Hover Vac 250

| | |
|-----------------|--------------|
| Power | 1400 watts |
| Blade Length | 25cm |
| Cutting Heights | x4 (11-31mm) |
| Grassbox | 15 Litres |
| Cable Length | 10m |
| Weight | 6.5kg |

Hover Vac 260

| | |
|-----------------|--------------|
| Power | 1400 watts |
| Blade Length | 26cm |
| Cutting Heights | x4 (11-31mm) |
| Grassbox | 15 Litres |
| Cable Length | 10m |
| Weight | 6.5kg |

Hover Vac 270

| | |
|-----------------|--------------|
| Power | 1400 watts |
| Blade Length | 27cm |
| Cutting Heights | x4 (11-31mm) |
| Grassbox | 15 Litres |
| Cable Length | 10m |
| Weight | 6.5kg |

For further product details [click here](#)

Glider Compact 330AX

COLLECT

Top Feature Product

Powerful and advanced, grass collecting electric hover lawnmower. Glides across the lawn cutting and collecting into an easy to empty collection box.



What are the benefits?



Unique Grass Collection Box - lets you easily see when the box needs emptying.



BLADE



HEIGHT



WEIGHT



POWER



GRASSBOX



EASY TO MANOEUVRE

This lightweight lawnmower floats on a cushion of air making it highly manoeuvrable



VISION WINDOW

See when the grass collection box needs emptying



EASY HEIGHT ADJUSTMENT

Single dial height adjustment offering 4 cutting heights



FOLDING HANDLES

For easy transportation and storage



With maximum flexibility and minimum effort, rotary wheeled mowers let you cut your lawn quickly and easily.

INTRODUCTION TO WHEELED MOWERS

Let's roll!

Wheeled rotary lawnmowers are really versatile. They come packed with clever features that make cutting the lawn quick and easy.

Some Flymo models have a convenient single lever height adjust function. This enables you to quickly change the height of the lawnmower which in turn allows you to cut your grass to different finished heights.

Our models also feature large grass collection boxes which are easy to remove and empty – saving you time raking up the cuttings from your lawn. Some have vision windows while others have grassbox full indicators so you know when to empty.

When you've finished cutting your grass, our cable storage lets you wind your cable keeping it safe for next time. Storing your lawnmower couldn't be more convenient. Some of our models have handles that quickly fold down saving space in your garage or shed.



How to mow
safely





Wheeled Lawnmowers

FEATURING



**EASY TO STORE
FOLDABLE HANDLES**
Handles easily fold down
so the mower can be
stored away neatly



**STABLE
OVER EDGES**
The rear roller keeps the
mower stable so you can
cut right up to and over
the edge without scalping



EasiStore 300R

| | |
|-----------------|--------------|
| Power | 1200 watts |
| Blade Length | 30cm |
| Cutting Heights | x3 (20-60mm) |
| Grassbox | 30 Litres |
| Cable Length | 10m |
| Weight | 8.9kg |

EasiStore 340R

| | |
|-----------------|--------------|
| Power | 1400 watts |
| Blade Length | 34cm |
| Cutting Heights | x5 (20-60mm) |
| Grassbox | 35 Litres |
| Cable Length | 10m |
| Weight | 11kg |

For further
product
details
click here



ACCESSORIES
**Keep your
machine in top
performance**

SPACE SAVING VERTICAL STORAGE

Easy 3 step storage
for saving floor space.
Fold the handles, stand
it up vertically and
hang the grass box



Top
Feature
Product

EasiStore 380R

Electric lawnmower offering space
saving vertical storage that folds away
neatly into small spaces.

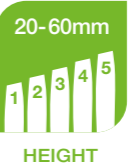


What are
the benefits?

Easy to use lever lets you select
one of five cutting heights without
the need for tools.



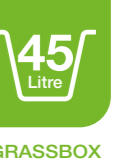
BLADE



HEIGHT



POWER



GRASSBOX



WEIGHT



**CREATES STRIPED
LAWN FINISH**
Equipped with an
integrated rear roller to
create a neat striped
finish to your lawn



**EASY
TRANSPORTATION**
Extra mobility thanks to
its up-right travel position.
Effortlessly get to and from
the lawn, no matter how far



**QUICK CHANGE
CUTTING HEIGHTS**
A single lever controls the
height of cut, making it
quick and easy to make
adjustments (not included
on the EasiStore 300R)



**FULL GRASSBOX
INDICATOR**
Allows you to easily see
when the grassbox needs
emptying (not included on
the EasiStore 300R)



Wheeled Lawnmowers

FEATURING



EASY TO CARRY
A convenient handle on top of the mower makes it easy to carry to and from the lawn



EASY TO STORE FOLDABLE HANDLES
Handles easily fold down so the mower can be stored away neatly



EasiMow 300R

| | |
|-----------------|--------------|
| Power | 1000 watts |
| Blade Length | 30cm |
| Cutting Heights | x3 (20-60mm) |
| Grassbox | 30 Litres |
| Cable Length | 10m |
| Weight | 8.4kg |



EasiMow 340R

| | |
|-----------------|--------------|
| Power | 1400 watts |
| Blade Length | 34cm |
| Cutting Heights | x5 (20-60mm) |
| Grassbox | 35 Litres |
| Cable Length | 10m |
| Weight | 10.8kg |

For further product details click here



ACCESSORIES
Keep your machine in top performance



QUICK CHANGE CUTTING HEIGHTS
A single lever controls the height of cut, making it quick and easy to make adjustments (Not included on the SimpliMow 300 and EasiMow 300R)

Top Feature Product

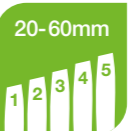
EasiMow 380R

Electric lawnmower with cable storage and a rear roller for lawn stripes.



What are the benefits?

Our Biggest Cutting Blade!
38cm of cutting power at your fingertips.



CLOSE EDGE CUTTING
Designed to allow cutting close along borders and flowerbeds, meaning less trimming is required



CREATES STRIPED LAWN FINISH
Equipped with an integrated rear roller to create a neat striped finish to your lawn



EASY CABLE STORAGE
Equipped with convenient cable storage hooks to quickly wind the cable & keep it tidy (not included on SimpliMow 300)



FULL GRASSBOX INDICATOR
Allows you to easily see when the grassbox needs emptying (not included on SimpliMow 300 and EasiMow 300R)



Wheeled Lawnmowers



ELECTRIC



SimpiCompact 300

| | |
|-----------------|--------------|
| Power | 1000 watts |
| Blade Length | 30cm |
| Cutting Heights | x3 (20-60mm) |
| Grassbox | 30 Litres |
| Cable Length | 10m |
| Weight | 6.9kg |

SimpliMow 300

| | |
|-----------------|--------------|
| Power | 1000 watts |
| Blade Length | 30cm |
| Cutting Heights | x3 (20-60mm) |
| Grassbox | 30 Litres |
| Cable Length | 10m |
| Weight | 6.9kg |

SimpliMow 320

| | |
|-----------------|--------------|
| Power | 1000 watts |
| Blade Length | 32cm |
| Cutting Heights | x3 (20-60mm) |
| Grassbox | 30 Litres |
| Cable Length | 10m |
| Weight | 10.1kg |

For further
product
details
[click here](#)

SimpliMow 320V

Electric lawnmower that is comfortable
to use with extra convenient features,
perfect for smaller lawn

Top
Feature
Product



ELECTRIC



32cm

BLADE



20-60mm

HEIGHT



1300
Watts

POWER



30
Litres

GRASSBOX



10.3
KG

WEIGHT



What are
the benefits?



VISION WINDOW
Allows you to see into
the grass box to know
when it's full



SOFT GRIP HANDLE
For more comfort when
mowing



CABLE STORAGE
Easily wind up the cable
and keep it tidy on the
mower



CARRY HANDLE
Makes it easier to pick up
& carry to and from the
lawn



Wheeled Lawnmowers



Speedi-Mo 360C

Lightweight and efficient mower, ideal for, ideal for medium to large gardens.

| | |
|-----------------|--------------|
| Power | 1500 watts |
| Blade Length | 36cm |
| Cutting Heights | x5 (20-60mm) |
| Grassbox | 40 Litres |
| Cable Length | 12m |
| Weight | 11.5kg |

For further product details [click here](#)



Speedi-Mo 360VC

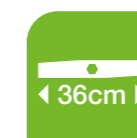
Powerful and advanced, grass collecting electric lawnmower. With a convenient vision window to see when you need to empty the grassbox.

Top Feature Product

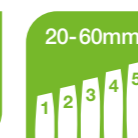


How to look after your lawn during the summer

A large grass collection box that compacts your grass meaning less time emptying.



BLADE



HEIGHT



POWER



GRASSBOX



WEIGHT



VISION WINDOW

See when the grass collection box needs emptying (not included on the Speedi-Mo 360C)



EASY HEIGHT ADJUSTMENT

Single dial height adjustment offering 5 cutting heights (not included on the Chevron 32V)



EASY TO EMPTY GRASSBOX

Large grass box with tongue design makes it easier to remove and dispose of all the clippings



COLLECTS AND COMPACTS

Collects and compacts more grass for less emptying



Finish your lawn in style with our range of cutting edge grass trimmers. Light and easy to use, you'll be the envy of your neighbours in no time.

INTRODUCTION TO ELECTRIC GRASS TRIMMERS

Getting the edge

If there is one thing that spoils a beautiful cut lawn it has to be ragged and untidy lawn edges – especially if you have an eye for attention to detail!

However, if you're struggling to keep things neat you're not alone. This common problem can be solved in no time with the right grass trimmer and some handy tricks.

During the warmer months you may find yourself cutting your lawn once a week to maintain a healthy appearance. There are several parts of a lawn, especially if your garden is a quirky shape, which can't be reached with your everyday lawnmower. Grass trimmers are a great easy way to keep your garden looking neat and tidy all year round. They are multipurpose so can be used to cut long, overgrown grass as well as to tidy lawn edges and trickier spots that can't be reached with a lawnmower, such as around plants or under benches and trampolines.

The electric grass trimmer is the most commonly owned trimmer in the UK and runs off the mains electricity found in your home. Electric trimmers are sufficient for small to medium sized gardens and tend to be lighter in weight.

Many of Flymo's grass trimmers, such as the Contour 650E, have a head that can rotate 90 degrees allowing you to cut vertically across the border which ultimately creates a neater edge.



Get creative

1

Create neat and tidy borders with plastic lawn edging

2

Decorative lawn edging such as stones look attractive and are easy to maintain

3

Wood lawn edging creates a softer look

4

Why not add Solar Powered LED lighting for a quirky lawn edge?

5

And if you're on a budget remember that a strip of bricks will also do the job!



Grass Trimmers



Contour XT

| | |
|---------------|-----------|
| Power | 300 watts |
| Cutting Width | 25cm |
| Cable Length | 12m |
| Cable Storage | Yes |
| Weight | 2.8kg |



Contour 500E

| | |
|---------------|-----------|
| Power | 500 watts |
| Cutting Width | 25cm |
| Cable Length | 10m |
| Cable Storage | Yes |
| Weight | 3.1kg |

FEATURING



PLANT GUARD
Preserves line and protects plants and shrubs



ROTATE FOR EDGING
Simply press the edging button and rotate the trimmer head

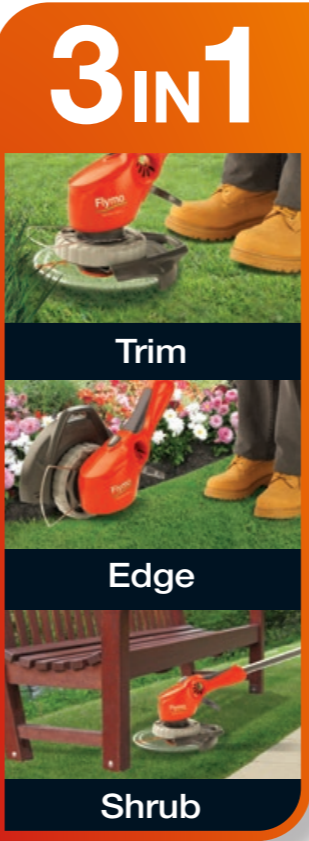


How to use an electric grass trimmer

For further product details [click here](#)

Contour 650E

A powerful, lightweight, easy to use grass trimmer that edges, making quick and easy work of trimming and edging your lawn.



Top Feature Product



Our trimmer lines come in a specially designed pack to reduce the line degrading over time



30 cm

CUTTING

10 Metre

CABLE

650 Watts

POWER

3.4 KG

WEIGHT



POWERFUL MOTOR
Powerful motors make trimming tough areas easy



QUICK AND EASY EDGE MODE
Edging made easy with the touch of a button



SHRUBBING MODE
Shrubbing mode allows awkward areas to be tackled easily (not included on the Contour XT)



ADJUSTABLE HANDLE
Telescopic handle and secondary adjustable handle to suit the user (not included on the Contour XT)



Grass Trimmers



Mini Trim

| | |
|---------------|-----------|
| Power | 230 watts |
| Cutting Width | 21cm |
| Cable Length | 6m |
| Cable Storage | No |
| Weight | 1.75kg |



Mini Trim ST

| | |
|---------------|-----------|
| Power | 300 watts |
| Cutting Width | 21cm |
| Cable Length | 6m |
| Cable Storage | Yes |
| Weight | 1.43kg |

FEATURING



POWERFUL TRIMMING

Lightweight and powerful trimming for edges of your lawn or around trees and along fences

For further product details [click here](#)

Top Feature Product

Speedi-Trim

Electric grass trimmer with automatic line feed and steady handle for quick and easy trimming. Perfect for smaller gardens.



CUTTING



POWER



CABLE



WEIGHT



QUICK TIPS

For a perfectly straight edge, stand on a plank of wood and trim up to the edge



AUTOMATIC LINE FEED

Twin automatic cutting line feed



PLANT GUARD

Fitted with a plant guard which preserves the line and protects plants and shrubs



LIGHTWEIGHT

When in use and for easy transportation from storage to garden



EASY GRIP HANDLE

For comfortable use



To keep your hedge healthy and for that perfect finishing touch, regular hedge cutting can make a huge impact on the look of your garden.

INTRODUCTION TO ELECTRIC HEDGE TRIMMERS

Neat edges make great hedges

Hedges and bushes can quickly become untidy if left to grow. To keep them looking their best our range of hedge trimmers has been designed for easy use and safe handling.

If you're not used to using a hedge trimmer it can seem quite daunting. That's why we've made sure all Flymo hedge trimmers come with a comprehensive range of safety features. All our products have a two-hand safety switch that needs to be pressed to make the product work, preventing accidental starting and the majority of our hedge trimmer range have debris guards to keep your hands away from the cutting blade and protect from falling debris. We would always recommend to wear gloves and goggles when using a hedge trimmer.

How to choose a hedge trimmer

Power – Determining the best product for the job depends on the sort of hedge you have. For hedges that are cut regularly or branches that are quite thin, a lower powered hedge trimmer should be suitable. If your hedges are quite dense then choose a model with more power.

Blade length – If you have a small hedge choose a blade under 50cm. For larger hedges, the longer the blade the more you can cut so choose one of the larger products.

Teeth Spacing – The space between the teeth dictates the thickness of the branches you can cut. The more space between the teeth, the thicker the branches you can cut.

Precision Cutting – For a faster, neater finish choose a hedge trimmer that has a diamond ground, double action blade.

High Hedges – If your hedges are quite high then consider a trimmer with an extended reach handle specially designed to trim taller hedges with ease. The Flymo SabreCut hedge trimmer can be extended to a length of 3 metres!

Weight – Make sure you choose a trimmer that isn't too heavy as you could spend a lot of time carrying it.



How to use an electric hedge trimmer

1

Check the weather – never cut in wet weather

2

Inspect the environment – make sure the area is safe

3

Wear appropriate clothing and footwear

4

Begin cutting – cut from the bottom up in a circular motion

5

Work patiently and methodically – rushing can lead to accidents

6

Clean your hedge trimmer of debris, sap and dirt



Hedge Trimmers



Your hedge, perfected

Tame unruly hedge quickly, as the dual reciprocating blades make light work of any bush or hedge.



EasiCut 450

| | |
|--------------|-----------|
| Power | 450 watts |
| Blade Length | 45cm |
| Blade Gap | 19mm |
| Cable Length | 8m* |
| Weight | 2.6kg |

For further product details [click here](#)

QUICK TIPS

It's best to cut hedges in early spring and late summer when the bird nesting season has come to an end.

*Supplied with detachable power cable.



SAFETY FIRST

We recommend you use safety goggles, gloves and sturdy footwear when cutting your hedge.



Top Feature Product

EasiCut 500

Electric hedge trimmer, powerful and well balanced, perfect for medium hedges.



50cm

BLADE

19mm

GAP

500 Watts

POWER

3.4 KG

WEIGHT

8 Metre*

CABLE

DUAL TRIGGER START

Protects against accidental starting

DUAL ACTION BLADES

Provides a clean and precise cut everytime

DEBRIS GUARD

Protects from falling debris while working



What are the benefits?

*Supplied with detachable power cable.



INTRODUCTION TO ELECTRIC CHAINSAWS

When a hedge trimmer just doesn't cut it

When a hedge trimmer isn't up to the task then a chainsaw is an obvious choice. The right one can save you lots of time, whether you want to thin some shrubs, chop wood for your log burner or trim some trees.

Chainsaws have come a long way from originally being in the domain of the professional lumberjack. Nowadays they're crammed with advanced technology and safety features based on those of the professional saws, with easy handling and ergonomic design so you can work without tiring.

Choosing the correct product for the job can seem a little daunting with so many features to consider:

Power – how much do you need? As a rule of thumb, the harder and thicker the wood you want to cut, the more power is needed to cut efficiently. For normal domestic tasks like trimming small overhanging branches or general garden maintenance, a less powerful chainsaw will be up to the task.

Type of power - Chainsaws come in three different power sources – electric, petrol and battery. If you're going to be near a power supply you could opt for a corded product. These are less expensive and usually easier to maintain. If not, then consider either a battery or petrol chainsaw giving you freedom to tackle tasks in a larger garden.

Bar length – this is the length of the cutting bar - the longer the bar the bigger the logs you can cut.

Weight – When you're using a chainsaw they can seem to get heavy very quickly. Battery and electric versions tend to be lighter than their petrol cousins. If you can, try a number of models and choose the one that's the most comfortable.

Safety should be a top priority. A well-designed chainsaw will have many built in safety features like an automatic chain brake. This means the blade will stop immediately in the event of a kickback which can occur when you impact a hard surface or when activated by the user. And **ALWAYS** wear protective clothing.

Top
Feature
Product



SAFETY FIRST

We recommend you use safety goggles, safety gloves, helmet and protective trousers



EasiSaw 350E

Powerful electric chainsaw that makes cutting wood safe and easy.



Supplied with 8m detachable power cable.



1800
Watts

POWER



35cm

BAR



13.5m/s

SPEED



4.6
KG

WEIGHT



HIGH CHAIN SPEED
Provides a faster, smoother cut



TOOL-LESS CHAIN TENSIONING
Makes replacing and tightening the chain easy, with no tools required



DOUBLE ACTIVATED CHAIN BRAKE
Provides safety to the user in the event of a kickback by stopping the chain



TOP ORIENTATED OIL TANK
For easy access and reduced spillages when refilling



What are the
benefits?



Garden Vacs & Blowers



INTRODUCTION TO ELECTRIC GARDEN VACS

Whoosh!

A covering of leaves can not only look untidy but can also damage your lawn as they deprive it of light, oxygen and water.

Clearing them regularly helps keep your garden healthy year after year. The Flymo range of powerful garden vacs and blowers makes clearing your garden of leaves quick and easy.



PowerVac 2700

| | |
|---------------------|------------|
| Power | 2700 watts |
| Blow Speed | 310 km/h |
| Collection Capacity | 40 Litres |
| Suction Capacity | 168 l/s |
| Cable Length | 10m |
| Shredding Facility | 14:1 |
| Weight | 4.8kg |

For further product details [click here](#)

PowerVac 3000

Powerful & easy to use electric garden blower. It is perfect to blow, vacuum and shred leaves for a tidy garden. The tool-less QuickChange feature easily converts from blow to vac.

PowerVac 3000V with variable speed at the touch of a button



Top Feature Product

3000
Watts

POWER

310
KM/H

BLOW

45
Litres

BAG

16:1

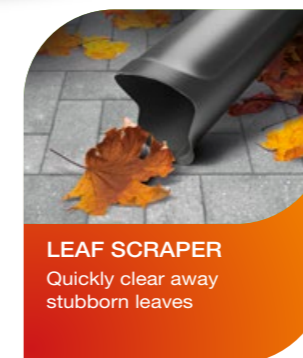
MULCH

168
L/S

VACUUM

4.8
KG

WEIGHT



LEAF SCRAPER
Quickly clear away stubborn leaves



QUICK TIPS

Why not turn your leaves into leaf mulch and spread it on your soil? Nature's way of suppressing weeds.



SHREDS LEAVES
Reducing volume



How do leaf blowers work?

3IN1



1
Blow



2
Vacuum



3
Shred



Multi Packs

FEATURING



METAL BLADE

The metal blade gives a neater cut and is longer lasting



POWERFUL TRIMMING

Lightweight and powerful trimming for edges of your lawn or around trees and along fences



QUICK TIPS

Regular cutting of your lawn is important because it thickens the grass. For the best results cut little and often.

Packed and ready to go

Keeping your garden tidy has never been easier with our newly extended range of multi-packs.

Each pack contains either a hover or wheeled lawnmower and easy to use, lightweight grass trimmer for that finishing touch.

SimpliMow 300 Mini Trim



BLADE



HEIGHT



POWER



GRASSBOX



WEIGHT



CUTTING



POWER

Electric lawnmower to simply mow your lawn with lightweight easy to use grass trimmer. All in one box.

EasiMow 300R Mini Trim



BLADE



HEIGHT



POWER



GRASSBOX



WEIGHT



CUTTING



POWER

Electric lawnmower with cable storage and a rear roller for lawn stripes, including lightweight easy to use grass trimmer. All in one box.

Turbo Lite 250 Mini Trim



BLADE



HEIGHT



POWER



WEIGHT



CUTTING



POWER

Lightweight electric hover lawnmower. Small and agile with a metal blade. Including lightweight easy to use grass trimmer. All in one box.



Check out our specially curated selection of spares and accessories and keep your garden machinery in tip top condition.

Spares and Accessories

Flymo's spares and accessories have been specifically designed to fit our full range of products. This extensive selection has been tailored to give you the convenience and confidence to choose products that suit all your gardening machinery needs.

From blades and trimmer lines that keep your products in tip top condition, we've got you covered. to our wide range of protective equipment to keep you safe from head to toe, we've got you covered!



Robotic Accessories

A full range of accessories to keep your robotic lawnmower in optimal condition including blades, repair kit, boundary wire and wheel brushes.

Lawnmower Accessories

Using blunt blades can do more damage than good to your lawn. Browse our range of product specific blades to keep your lawn looking luscious, neat and tidy.

Trimmer Accessories

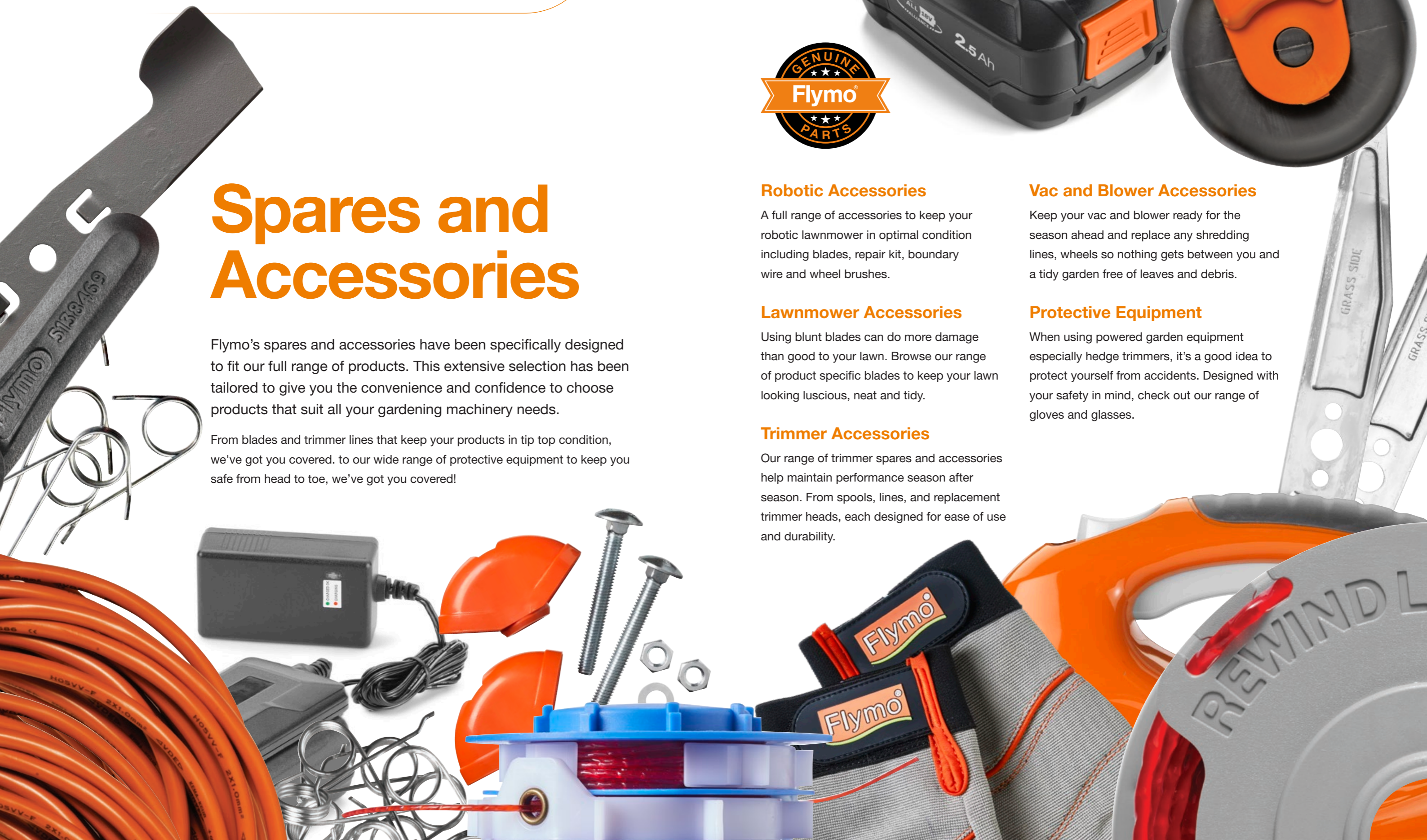
Our range of trimmer spares and accessories help maintain performance season after season. From spools, lines, and replacement trimmer heads, each designed for ease of use and durability.

Vac and Blower Accessories

Keep your vac and blower ready for the season ahead and replace any shredding lines, wheels so nothing gets between you and a tidy garden free of leaves and debris.

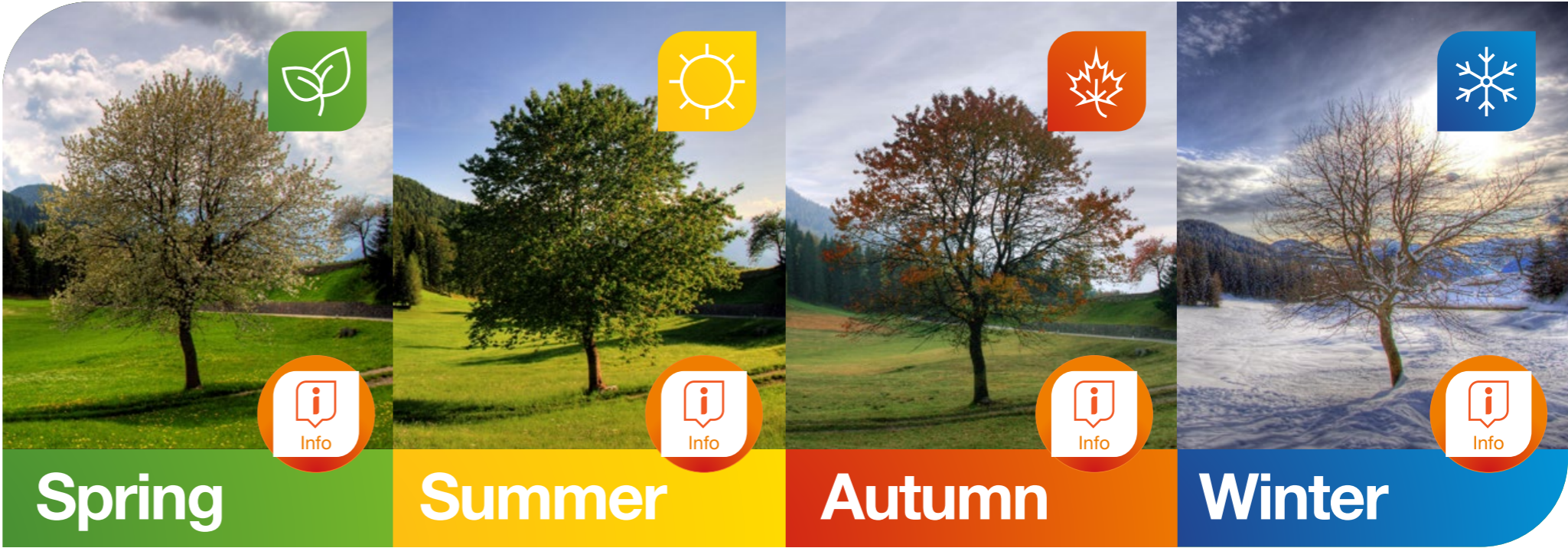
Protective Equipment

When using powered garden equipment especially hedge trimmers, it's a good idea to protect yourself from accidents. Designed with your safety in mind, check out our range of gloves and glasses.



How's your year looking?

Getting a great looking lawn and garden is relatively easy. Follow our monthly guides telling you what to do and when, to help create a garden your neighbours will be envious of!



January ❄️

- ✓ Check your tools and equipment are all clean and sharpened ready for the year ahead
- ✓ Make repairs to fencing or loose paving
- ✓ Clear and tidy your greenhouse or shed
- ✓ Cut down any perennials
- ✓ Plant your Christmas tree outside
- ✓ Give your hedges the first cut of the year

February ❄️

- ✓ Order your summer bulbs such as lilies and gladioli
- ✓ Continue to cut down your perennials and plant new one's
- ✓ Sow annuals for early flowers
- ✓ Start to prune roses
- ✓ Cut your hedges - remember to avoid March - August, the peak season for nesting birds

March 🌱

- ✓ Clean and tidy patios and decking using a Blower/Vac and pressure washer
- ✓ First cut of the year is 28th March
- ✓ Make sure you cut on highest setting to avoid damage
- ✓ Hoe your soil and remove weeds
- ✓ Sow seeds ready for the summer monthson your lawn

April 🌱

- ✓ Plant sweet pea seedlings
- ✓ Take cuttings of any plants you'd like to grow
- ✓ Sow more seeds for the summer!
- ✓ Keep on top of your weeding
- ✓ Remove dead moss from your grass and sow new seeds
- ✓ Clean your patio and decking areas of moss and debris using a Blower/Vac and Pressure washer

May 🌱

- ✓ Pot any cuttings from April
- ✓ Empty spring pot displays
- ✓ Plant out any new plants
- ✓ More weeding!
- ✓ Now's the time to add stripes to your lawn

June ☀️

- ✓ Plant any seedlings
- ✓ Deadhead peonies and other plants
- ✓ Keep on top of the weeding
- ✓ Cut your lawn once or twice a week and make sure it stays hydrated

July ☀️

- ✓ Plant your pots for late summer display
- ✓ Keep deadheading
- ✓ Cut back early perennials
- ✓ Weeding
- ✓ Cut your lawn once or twice a week and make sure it stays hydrated

August ☀️

- ✓ Order spring bulbs and annual seeds
- ✓ Pot biennials and remove annuals such as sweet peas
- ✓ General tidying up in the garden
- ✓ August is often the hottest month of the year so you may need to water your lawn more frequently.

September 🍁

- ✓ Plan where to plant next year's bulbs
- ✓ Cut back & remove dead plants
- ✓ Remove early autumn leaves from your garden using a Blower/Vac
- ✓ Cut your lawn once a week
- ✓ Scarify and aerate your lawn
- ✓ Sow new grass seed
- ✓ Insulate any outside pipes & taps
- ✓ Remove all summer fruit from trees

October 🍁

- ✓ Clear beds of old plants
- ✓ Plant up large pots for spring flowers
- ✓ Weeding – again!
- ✓ Remove autumn leaves from your garden. Blower/Vacs mulch leaves that can then used as compost
- ✓ Fertilise your lawn

November 🍁

- ✓ Continue planting spring bulbs including tulips
- ✓ Cut back roses
- ✓ Sow sweet peas for flowers next year
- ✓ Weed
- ✓ Remove unwanted plants
- ✓ Plan any changes to your garden for next year

December ❄️

Put your feet up and enjoy the festive season!

Product Specification



Robotic Lawnmower



| | EasiLife GO 150 | EasiLife GO 200 | EasiLife GO 250 | EasiLife GO 400 | EasiLife GO 500 | EasiLife 800 | UltraLife 600 | UltraLife 800 | UltraLife 1200 | UltraLife 1500 |
|----------------------------|---------------------------|---------------------------|---------------------------|---------------------------|---------------------------|-------------------------------------|-------------------------------------|-------------------------------------|-------------------------------------|-------------------------------------|
| Maximum Working Area | 150m² +/-20% | 200m² +/-20% | 250m² +/-20% | 400m² +/-20% | 500m² +/-20% | 800m² +/-20% | 600m² +/-20% | 800m² +/-20% | 1200m² +/-20% | 1500m² +/-20% |
| Navigation System | Irregular Pattern | Irregular Pattern | Irregular Pattern | Irregular Pattern | Irregular Pattern | Irregular Pattern | Irregular Pattern | Irregular Pattern | Irregular Pattern | Irregular Pattern |
| Charging System | Automatic | Automatic | Automatic | Automatic | Automatic | Automatic | Automatic | Automatic | Automatic | Automatic |
| Battery Capacity/Voltage | 18V (2.1Ah Li-ion) | 18V (2.1Ah Li-ion) | 18V (2.1Ah Li-ion) | 18V (2.1Ah Li-ion) | 18V (2.1Ah Li-ion) | 18V (2.1Ah Li-ion) | 18V (2.1Ah Li-ion) | 18V (2.1Ah Li-ion) | 18V (2.1Ah Li-ion) | 18V (2.1Ah Li-ion) |
| Number of Cutting Discs | 1 | 1 | 1 | 1 | 1 | 1 | 1 | 2 | 2 | 2 |
| Cutting Heights (mm) | 20-50 | 20-50 | 20-50 | 20-50 | 20-50 | 20-50 | 25-45 | 25-45 | 25-45 | 25-45 |
| Cutting Width (cm) | 16 | 16 | 16 | 16 | 16 | 16 | 16 | 16 / 22 | 16 / 22 | 16 / 22 |
| Interface / Control | Push & Go / 5 LED Buttons | Push & Go / 5 LED Buttons | Push & Go / 5 LED Buttons | Push & Go / 5 LED Buttons | Push & Go / 5 LED Buttons | Assist U / LCD Screen + Full Keypad | Push & Go / 7 LED Buttons | Push & Go / 7 LED Buttons | Push & Go / 7 LED Buttons | Push & Go / 7 LED Buttons |
| Slope Performance | 25% | 25% | 25% | 25% | 25% | 35% | 25% | 35% | 35% | 35% |
| App Control | Yes - Bluetooth | Yes - Bluetooth | Yes - Bluetooth | Yes - Bluetooth | Yes - Bluetooth | Yes - Bluetooth | Yes - Bluetooth / GARDENA smart App | Yes - Bluetooth / GARDENA smart App | Yes - Bluetooth / GARDENA smart App | Yes - Bluetooth / GARDENA smart App |
| Alexa Compatible | No | No | No | No | No | No | Yes | Yes | Yes | Yes |
| Remote Starting Points | Yes (3) | Yes (3) | Yes (3) | Yes (3) | Yes (3) | Yes (3) | Yes (3) | Yes (3) | Yes (3) | Yes (3) |
| Spot Cut | Yes | Yes | Yes | Yes | Yes | Yes | Yes | Yes | Yes | Yes |
| Override | Yes | Yes | Yes | Yes | Yes | Yes | Yes | Yes | Yes | Yes |
| 2nd Area | Yes | Yes | Yes | Yes | Yes | Yes | Yes | Yes | Yes | Yes |
| Trim to Edge (down to 1cm) | No | No | No | No | No | No | Yes | Yes | Yes | Yes |
| FrostSense | Yes | Yes | Yes | Yes | Yes | Yes | Yes | Yes | Yes | Yes |
| LawnSense | Yes | Yes | Yes | Yes | Yes | Yes | Yes | Yes | Yes | Yes |
| PassageSense | Yes | Yes | Yes | Yes | Yes | Yes | Yes | Yes | Yes | Yes |
| Hose Washable | Yes | Yes | Yes | Yes | Yes | Yes | Yes | Yes | Yes | Yes |
| Sound Pressure Level dB(A) | 58 | 58 | 58 | 58 | 58 | 58 | 56 | 57 | 57 | 57 |
| Product Weight (kg) | 6.1 | 6.1 | 6.1 | 6.1 | 6.1 | 7.3 | 9.4 | 10.4 | 10.4 | 10.4 |
| Replacement Parts | | | | | | | | | | |
| Blade Ref no. | FLY072 | FLY072 | FLY072 | FLY072 | FLY072 | FLY072 | FLY072 | FLY072 | FLY072 | FLY072 |

Product Specification



Battery Lawnmowers



| | SimpliStore 300 Li | SimpliStore 340 Li | EasiStore 300R Li | EasiStore 340R Li | 18V SimpliMow 300 | 18V SimpliMow 320 | 36V EasiStore 340R | 36V EasiStore 380R | 36V UltraStore 340R | 36V UltraStore 380R |
|----------------------------|----------------------------|----------------------------|----------------------------|----------------------------|----------------------------|----------------------------|----------------------------|----------------------------|----------------------------|--|
| Charging System | Twin Charger | Twin Charger | Twin Charger | Twin Charger | x1 Single Charger | x1 Single Charger | x2 Single Chargers | x2 Single Chargers | x2 Single Chargers | x2 Single Chargers |
| Motor Type | Brushless | Brushless | Brushless | Brushless | Brushless | Brushless | Brushless | Brushless | Brushless | Brushless |
| Battery Voltage/Capacity | 40V (2x20V) (2.6Ah Li-Ion) | 40V (2x20V) (2.6Ah Li-Ion) | 40V (2x20V) (2.6Ah Li-Ion) | 40V (2x20V) (2.6Ah Li-Ion) | 18V (1x18V) (4.0Ah Li-Ion) | 18V (1x18V) (4.0Ah Li-Ion) | 36V (2x18V) (2.0Ah Li-Ion) | 36V (2x18V) (2.0Ah Li-Ion) | 36V (2x18V) (2.5Ah Li-Ion) | 36V (2x18V) (2.0Ah Li-Ion) 36V (2x18V) (4.0Ah Li-Ion) |
| Cutting Heights (mm) | 3 (25-65) | 5 (20-60) | 3 (25-65) | 5 (20-60) | 3 (30-60) | 4 (30-60) | 5 (20-60) | 5 (20-60) | 5 (20-60) | 5 (20-60) |
| Cutting Width (cm) | 30 | 34 | 30 | 34 | 30 | 32 | 34 | 38 | 34 | 38 |
| Grass Box Capacity (L) | 30 | 35 | 30 | 35 | 25 | 30 | 35 | 45 | 35 | 45 |
| Charge Time (minutes) | 360 for 2 batteries | 360 for 2 batteries | 360 for 2 batteries | 360 for 2 batteries | 244 | 244 | 124 (per battery) | 124 (per battery) | 154 (per battery) | 154 for 2.5 (per battery) 244 for 4.0 (per battery) |
| Battery Run Time (mins) | Up to 35 | Up to 30 | Up to 35 | Up to 30 | Up to 27 | Up to 30 | Up to 26 | Up to 22 | Up to 33 | Up to 28 for 2.5 Up to 41 for 4.0 |
| Sound Pressure Level dB(A) | 88 | 83 | 88 | 83 | 75 | 77 | 75 | 75 | 75 | 77 |
| Vibration Level m/s² | <2.5 | <2.5 | <2.5 | <2.5 | <2.5 | <2.5 | 0.7 | 0.5 | 0.7 | 0.6 |
| Product Weight (kg) | 8.8 inc. batteries | 11.2 inc. batteries | 8.8 inc. batteries | 11.2 inc. batteries | 8.65 inc. battery | 10.6 inc. battery | 11.3 inc. batteries | 12.5 inc. batteries | 11.5 inc. batteries | 12.6 inc. batteries for 2.5 13.2 inc. batteries for 4.0 |
| Rear Roller | No | No | Yes | Yes | No | No | Yes | Yes | Yes | Yes |
| LED Display | No | No | No | Yes | No | No | Yes | Yes | Yes | Yes |
| Comfort Handle | No | No | No | No | No | No | No | No | Yes | Yes |
| GrassBox Full indicator | No | Yes | No | Yes | No | Yes | Yes | Yes | Yes | Yes |
| Replacement Parts | | | | | | | | | | |
| Blade Ref no. | FLY069 | FLY087 | FLY069 | FLY087 | FLY108 | FLY109 | FLY087 | FLY099 | FLY087 | FLY099 |

Product Specification



Battery Grass Trimmers



| | SimpliTrim Li | 18V EasiTrim 250* | 18V EasiTrim Plus 230* | 18V UltraTrim 260* |
|----------------------------|--------------------|--------------------|------------------------|--------------------|
| Battery Capacity/Voltage | 14.4V (2Ah Li-Ion) | 18V (2.0Ah Li-Ion) | 18V (2.0Ah Li-Ion) | 18V (2.5Ah Li-Ion) |
| Battery Run Time (mins) | Up to 40 | Up to 28 | Up to 45 | Up to 28 |
| Cutting Width (cm) | 23 | 25 | 23 | 26 |
| Feed Mechanism | Blades | Auto | Blades | Auto |
| Lawn Edge Facility | No | Yes | No | Yes |
| Plant Guard | No | Yes | Yes | Yes |
| Shrubbing Facility | No | No | Yes | Yes |
| Sound Pressure Level dB(A) | 71 | 73 | 77 | 77 |
| Vibration Level m/s² | <2.5 | <2.5 | <2.5 | 3 |
| Product Weight (kg) | 1.7 | 2.4 | 2.4 | 3.2 |
| Replacement Parts | | | | |
| Spool & Line Ref no. | – | FLY047 | – | FLY098 |
| Trimmer Blades | FLY083 | – | FLY083 | – |
| Head Ref no. | – | FLY060 | – | FLY060 |

Battery Hedge Trimmers



| | SimpliCut Li | EasiCut 20V Li | SabreCut XT 20V Li | 18V EasiCut 450* | 18V UltraCut 500* | 18V UltraCut Reach 420* |
|----------------------------|----------------------|----------------------|----------------------|----------------------|----------------------|-------------------------|
| Power | 14.4V (2Ah Li-Ion) | 20V (2.5Ah Li-Ion) | 20V (2.5Ah Li-Ion) | 18V (2.0Ah Li-Ion) | 18V (2.5Ah Li-Ion) | 18V (2.5Ah Li-Ion) |
| Battery Run Time (mins) | Up to 60 | Up to 55 | Up to 55 | Up to 55 | Up to 55 | Up to 55 |
| Removable Battery | No | Yes | Yes | Yes | Yes | Yes |
| Blade Length (cm) | 40 | 50 | 42 | 45 | 50 | 42 |
| Blade Gap (mm) | 16 | 16 | 16 | 16 | 16 | 16 |
| Blade Type | Precision Cut Blades | Precision Cut Blades | Precision Cut Blades | Precision Cut Blades | Precision Cut Blades | Precision Cut Blades |
| Blade Tip Protector | Yes | Yes | Yes | Yes | Yes | Yes |
| Soft Grip | No | Yes | Yes | Yes | Yes | Yes |
| Extended Reach | No | No | Yes | No | No | Yes |
| Sound Pressure Level dB(A) | 75 | 71.3 | 79.8 | 67 | 67 | 72 |
| Vibration Level m/s² | <2.5 | 0.9 | 1.17 | 1.3 | 1.4 | 1.4 |
| Product Weight (kg) | 2.1 | 2.5 | 3.5 | 2.8 | 2.9 | 3.9 |

*KIT version come complete with batteries and charger **Product Only** version purchase batteries and charger separately

Product Specification

Battery Shears



| 18V SimpliShear | |
|---|--------------------|
| Charging System | 1 Charger |
| Motor Type | Brushed |
| Battery Voltage | 18V (2.0Ah Li-Ion) |
| Battery Run Time with Grass Blade (min) | 220 |
| Battery Run Time with Shrub Blade (min) | 280 |
| Grass Blade Width (cm) | 8 |
| Shrub Blade Length (cm) | 20 |
| Shrub Blade Gap (mm) | 8 |
| Tooless Blade Change | Yes |
| Sound Pressure Level dB(A) | 81 |
| Vibration Level m/s² | <2.5 |
| Product Weight with Grass Blade (kg) | 0.95 |
| Product Weight with Shrub Blade (kg) | 1.15 |

*KIT version come complete with batteries and charger **Product Only** version purchase batteries and charger separately

Battery Clean and Tidy



| | 18V EasiWeeder | EasiClean Li & Li Plus | EasiClear 100* |
|----------------------------|------------------|------------------------|--------------------|
| Charging System | 1 Charger | 1 Charger | 1 Charger |
| Motor Type | Brushed | Brushed | Brushed |
| Battery Capacity/Voltage | 18V (2Ah Li-Ion) | 18V (2Ah Li-Ion) | 18V (2.5Ah Li-Ion) |
| Battery Run Time (mins) | up to 40 | Up to 24 | 13-23 |
| Flow Rate | – | 200 L/H | – |
| Air Speed (km/h) | – | – | 100 |
| Hose (metres) | – | 5 | – |
| Suction | – | – | – |
| Nylon Brush Diameter (mm) | 110 | – | – |
| Steel Brush Diameter (mm) | 130 | – | – |
| LED Battery Display | Yes | Yes | Yes |
| Variable Speed Control | Yes | Yes | Yes |
| Telescopic Height Adjust | Yes | – | – |
| Adjustable Front Handle | Yes | – | – |
| Sound Pressure Level dB(A) | 87 | 83 | 95 |
| Vibration Level m/s² | <2.5 | 2.8 | 0.4 |
| Product Weight (kg) | 2.4 | 1.5 | 1.8 |

*KIT version come complete with batteries and charger **Product Only** version purchase batteries and charger separately



Product Specification

Electric Products

Electric Hover



| | TurboLite 250 | TurboLite 260 | SimpliGlide 300 | SimpliGlide 330 | SimpliGlide 360 |
|----------------------------------|------------------|------------------|--------------------|--------------------|--------------------|
| Motor Power (watts) | 1400 | 1400 | 1700 | 1700 | 1800 |
| Blade Length (cm) | 25 | 26 | 30 | 33 | 36 |
| Cutting System | Metal Blade | Metal Blade | Metal Blade | Metal Blade | Metal Blade |
| Cutting Heights (mm) | 4 (11-31) | 4 (11-31) | 4 (10-30) | 4 (10-30) | 4 (10-30) |
| Height Adjustment | Spacers | Spacers | Spacers | Spacers | Spacers |
| Cable Length (m) / Storage | 10/No | 10/No | 10/No | 10/No | 10/No |
| Sound Pressure Level dB(A) | <90 | <90 | 84 | 83 | 80 |
| Vibration Level m/s ² | 2.2 | 2.2 | 1.5 | 1.5 | 1.9 |
| Product Weight (kg) | 5.1 | 5.1 | 7.4 | 7.4 | 7.6 |
| Comes Assembled | No | No | No | No | No |
| Replacement Parts | | | | | |
| Blade Ref no. | FLY074 | FLY075 | FLY094 | FLY095 | FLY096 |
| Spacer Ref no. | FLY092 | FLY092 | FLY093 | FLY093 | FLY093 |

Product Specification



Electric Hover Collect



| | Hover Vac 250 | Hover Vac 260 | Hover Vac 270 | EasiGlide 300 | EasiGlide 330 | EasiGlide 360 | EasiGlide 300V | EasiGlide 330V | EasiGlide 360V | Glider Compact 330AX | EasiGlide Plus 300V | EasiGlide Plus 330V | EasiGlide Plus 360V |
|----------------------------|---------------|---------------|---------------|---------------|---------------|---------------|----------------|----------------|----------------|----------------------|---------------------|---------------------|---------------------|
| Motor Power (watts) | 1400 | 1400 | 1400 | 1700 | 1700 | 1800 | 1700 | 1700 | 1800 | 1700 | 1700 | 1700 | 1800 |
| Blade Length (cm) | 25 | 26 | 27 | 30 | 33 | 36 | 30 | 33 | 36 | 33 | 30 | 33 | 36 |
| Cutting System | Metal Blade | Metal Blade | Metal Blade | Metal Blade | Metal Blade | Metal Blade | Metal Blade | Metal Blade | Metal Blade | Metal Blade | Metal Blade | Metal Blade | Metal Blade |
| Cutting Heights (mm) | 4 (11-31) | 4 (11-31) | 4 (11-31) | 4 (10-30) | 4 (10-30) | 4 (10-30) | 4 (10-30) | 4 (10-30) | 4 (10-30) | 4 (12-32) | 4 (10-30) | 4 (10-30) | 4 (10-30) |
| Height Adjustment | Spacers | Spacers | Spacers | Spacers | Spacers | Spacers | Spacers | Spacers | Spacers | Central | Spacers | Spacers | Spacers |
| Grass Box Capacity (L) | 15 | 15 | 15 | 20 | 20 | 26 | 20 | 20 | 26 | 22 | 20 | 20 | 26 |
| Cable Length (m) / Storage | 10/No | 10/No | 10/No | 10/Yes | 10/Yes | 10/Yes | 10/Yes | 10/Yes | 10/Yes | 10/Yes | 10/Yes | 10/Yes | 10/Yes |
| Vision Window | No | No | No | No | No | No | Yes | Yes | Yes | Yes | Yes | Yes | Yes |
| Sound Pressure Level dB(A) | 90.0 | 90.0 | 90.0 | 92 | 92 | 92 | 92 | 92 | 92 | 87.0 | 92 | 92 | 92 |
| Vibration Level m/s² | 2.2 | 2.2 | 2.2 | 1.5 | 1.5 | 1.9 | 1.5 | 1.5 | 1.9 | 2.5 | 1.5 | 1.5 | 1.9 |
| Product Weight (kg) | 6.5 | 6.5 | 6.5 | 8.3 | 8.3 | 8.5 | 8.3 | 8.3 | 8.5 | 9.4 | 8.5 | 8.5 | 8.8 |
| Comes Assembled | No | No | No | No | No | No | No | No | No | No | Minimal Assembly | Minimal Assembly | Minimal Assembly |
| Replacement Parts | | | | | | | | | | | | | |
| Blade Ref no. | FLY074 | FLY075 | FLY076 | FLY094 | FLY095 | FLY096 | FLY094 | FLY095 | FLY096 | FLY070 | FLY094 | FLY095 | FLY096 |
| Spacer Ref no. | FLY092 | FLY092 | FLY092 | FLY093 | FLY093 | FLY093 | FLY093 | FLY093 | FLY093 | - | FLY093 | FLY093 | FLY093 |

Product Specification



Electric Wheeled



| | SimpliCompact 300 | SimpliMow 300 | SimpliMow 320 | SimpliMow 320V | Speedi-Mo 360C | Speedi-Mo 360VC | EasiMow 300R | EasiMow 340R | EasiMow 380R | EasiStore 300R | EasiStore 340R | EasiStore 380R |
|----------------------------|-------------------|---------------|---------------|----------------|----------------|-----------------|--------------|--------------|--------------|----------------|----------------|----------------|
| Motor Power (watts) | 1000 | 1000 | 1000 | 1300 | 1500 | 1500 | 1000 | 1400 | 1600 | 1200 | 1400 | 1600 |
| Blade Length (cm) | 30 | 30 | 32 | 32 | 36 | 36 | 30 | 34 | 38 | 30 | 34 | 38 |
| Cutting System | Metal Blade | Metal Blade | Metal Blade | Metal Blade | Metal Blade | Metal Blade | Metal Blade | Metal Blade | Metal Blade | Metal Blade | Metal Blade | Metal Blade |
| Cutting Heights (mm) | 3 (20-60) | 3 (20-60) | 3 (20-60) | 3 (20-60) | 5 (20-60) | 5 (20-60) | 3 (20-60) | 5 (20-60) | 5 (20-60) | 3 (20-60) | 5 (20-60) | 5 (20-60) |
| Height Adjustment | Manual | Manual | Manual | Manual | Central | Central | Manual | Central | Central | Manual | Central | Central |
| Grass Box Capacity (L) | 30 | 30 | 30 | 30 | 40 | 40 | 30 | 35 | 45 | 30 | 35 | 45 |
| Cable Length (m)/Storage | 10/No | 10/No | 10/Yes | 10/Yes | 12/Yes | 12/Yes | 10/Yes | 10/Yes | 10/Yes | 10/Yes | 10/Yes | 10/Yes |
| Grassbox Full indicator | No | No | No | Yes | No | Yes | No | Yes | Yes | No | Yes | Yes |
| Roller | No | No | No | No | No | No | Yes | Yes | Yes | Yes | Yes | Yes |
| Sound Pressure Level dB(A) | 85 | 87 | 85 | 85 | 87.0 | 87.0 | 87 | 88 | 89 | 88 | 88 | 89 |
| Vibration Level m/s² | <2.5 | 3.66 | 4.5 | 4.5 | 2.3 | 2.3 | 3.66 | <2.5 | <2.5 | <2.5 | <2.5 | <2.5 |
| Product Weight (kg) | 6.9 | 6.9 | 10.1 | 10.3 | 11.5 | 11.5 | 8.4 | 10.8 | 12.4 | 8.9 | 11 | 12.6 |
| Replacement Parts | | | | | | | | | | | | |
| Blade Ref no. | FLY085 | FLY085 | FLY100 | FLY100 | FLY071 | FLY071 | FLY085 | FLY086 | FLY088 | FLY085 | FLY086 | FLY088 |

Product Specification



Grass Trimmers



| | Mini Trim | Mini Trim ST | Speedi-Trim | Contour XT | Contour 500E | Contour 650E |
|-------------------------------|---------------|---------------|-------------|-------------|--------------|--------------|
| Motor Power (watts) | 230 | 230 | 300 | 300 | 500 | 650 |
| Cutting Width (cm) | 21 | 21 | 25 | 25 | 25 | 30 |
| Feed Mechanism | Single Manual | Single Manual | Double Auto | Double Auto | Double Auto | Double Auto |
| Lawn Edge Facility | No | No | No | Yes | Yes | Yes |
| Plant Guard | No | No | Yes | Yes | Yes | Yes |
| Shrubbing Facility | No | No | No | No | Yes | Yes |
| Heavy Duty Line/Speed Control | No/No | No/No | No/No | No/No | No/No | Yes/Yes |
| Cable Length/Storage Facility | 6/No | 6/Yes | 12/Yes | 10/Yes | 10/Yes | 10/Yes |
| Sound Pressure Level dB(A) | 93 | 93 | 93 | 96 | 96 | 96 |
| Vibration Level m/s2 | 2.5 | 4.59 | 4.5 | 5.14 | 2 | 3 |
| Product Weight (kg) | 1.75 | 1.43 | 2.5 | 2.8 | 3.1 | 3.4 |
| Replacement Parts | | | | | | |
| Spool & Line Ref no. | FLY031 | FLY031 | FLY021 | FLY021 | FLY021 | FLY061 |
| Nylon Line Ref no. | FLY019 | FLY019 | FLY019 | FLY019 | FLY019 | – |
| Head Ref no. | – | – | FLY060 | FLY060 | FLY060 | FLY060 |

Chainsaw



| | EasiSaw 350E |
|-------------------------|---|
| Motor Power (watts) | 1800 |
| Bar Length | 35 |
| Chain Pitch | 3/8 |
| Oil Tank Capacity (ml) | 240 |
| Cable Length (m) | Supplied with 8m detachable power cable |
| Sound power level dB(A) | 95 |
| Vibration levels (m/s²) | 6.4 |
| Product Weight (kg) | 4.8 |

Product Specification



Hedge Trimmers



| | EasiCut 450 | EasiCut 500 |
|----------------------------|----------------------|----------------------|
| Motor Power (watts) | 450 | 500 |
| Blade Length (cm) | 45 | 50 |
| Blade Gap (mm) | 19 | 19 |
| Blade Type | Precision Cut Blades | Precision Cut Blades |
| Blade Tip Protector | No | No |
| Soft Grip | No | No |
| Cable Length (m) | 10 | 10 |
| Extended Reach | No | No |
| Sound Pressure Level dB(A) | 82.4 | 84.3 |
| Vibration Level m/s2 | 3.05 | 2.67 |
| Product Weight (kg) | 2.6 | 3.4 |

Garden Vacs



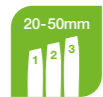
| | PowerVac 2700 | PowerVac 3000 | PowerVac 3000V |
|----------------------------|---------------|---------------|----------------|
| Motor Power (watts) | 2700 | 3000 | 3000 |
| Blow Speed (km/h) | 310 | 310 | 310 |
| Collection Capacity (L) | 40 | 45 | 45 |
| Suction Capacity (L/S) | 168 | 168 | 168 |
| Cable Length (m) | 10 | 10 | 10 |
| Shredding Facility | Yes 14:1 | Yes 16:1 | Yes 16:1 |
| Variable Speed | No | No | Yes |
| Sound Pressure Level dB(A) | 83.2 | 83.2 | 83.2 |
| Vibration Level m/s2 | 3.25 | 3.25 | 3.25 |
| Product Weight (kg) | 4.8 | 4.8 | 4.8 |



Specification Icons Explained

We know choosing a new piece of garden equipment can be quite daunting. Nowadays they're all packed with useful features and specifications so let's explain what these actually mean and how they help you get your jobs in the garden done quicker and easier. Flymo Your Life Easy.

Robotic Lawnmowers



HEIGHT – this shows you how much the grass can be cut by – up to 5cm in most robotic mowers. Having a selection of cutting heights to choose from gives you more flexibility. The lower the cutting height the shorter the grass.



SAFETY – there's a sensor built into all our robotic lawnmowers that stop the blades automatically should the mower be lifted



SLOPE – this indicates the maximum angle/height of your lawn that a robotic lawnmower can comfortably mow



BLUETOOTH – can link to your mobile device giving you variety of extra control options

Chainsaw



SPEED – speed at which the chain on a chainsaw rotates, typically measured in meters per second.



BAR – the length of the bar is good to know when you need to replace the bar and chain.

Battery Products



BATTERY – this shows you how powerful the battery is – the higher the voltage, the more powerful the battery



BLADE – this indicates the length of the cutting blade – the longer the blade the more area covered with each movement



GAP – this indicates the width between the gap on a hedge trimmer blade – the wider the gap the thicker the branches you can cut



RUN TIME – how long the product can run for when fully charged – this can vary depending on the workload the product is doing



WEIGHT – how heavy the product is – useful if you will be holding it for a while



CAPACITY – how much debris can be stored in the product without emptying



SUCTION – the power associated with sucking debris like leaves

Electric Lawnmowers



BLADE – this shows you how big the blade is – the bigger the blade the quicker you can cover more ground



HEIGHT – this shows how many different height adjustments are available on the product. The more steps available allows you to cut the grass at different heights. The lower the height the shorter the grass



GRASSBOX – the larger the grassbox the less it needs emptying



POWER – the higher the power the more effective the lawnmower

Grass Trimmer



CUTTING – this indicates the width the trimmer line will cut – if you have a larger garden choose a larger width



CABLE – how much cable comes with the product – always make sure you will be able to access power directly or via an extension cable

Hedge Trimmer



BLADE – this indicates the length of the cutting blade – the longer the blade the more area covered with each movement



GAP – this indicates the width between the gap on a hedge trimmer blade – the wider the gap the thicker the branches you can cut



CABLE – how much cable comes with the product – always make sure you will be able to access power directly or via an extension cable



POWER – the higher the power the more effective the hedge trimmer

Blowers and Vacs



BLOW – this indicates the amount of power to blow away debris



HOSE – the length of hose supplied as standard



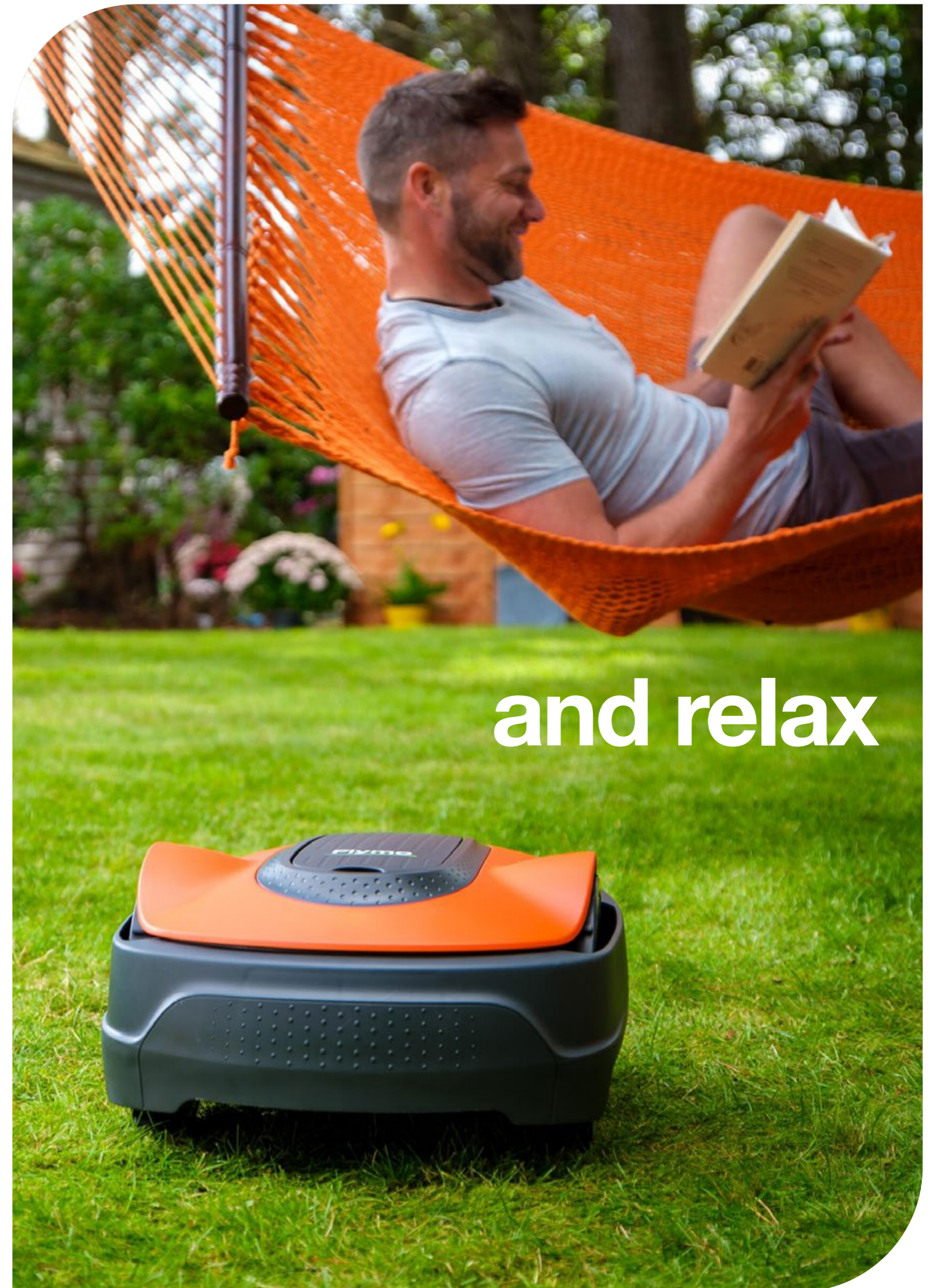
BAG – the size of the bag that will collect debris



WEIGHT – how much the product weighs



MULCH – this indicates how much the product will compact debris into mulch. The higher the rate the less you will need to empty the collection bag



The Flymo logo is located in the top left corner. It consists of the word "Flymo" in a white, sans-serif font, with a registered trademark symbol (®) to its upper right. The logo is set against an orange rectangular background that has a curved bottom edge.

Flymo®

Flymo Care for your product.
For further information on
Aftersales Service & Genuine Parts
please contact Customer Services.

Visit [Flymo.com/uk](https://www.flymo.com/uk) for easy access to products,
tips, manuals and product registration.

Customer Helpline

0344 844 4558

Customer Email

customer.services@husqvarna.co.uk

Preston Road,
Aycliffe Business Park,
Newton Aycliffe,
Co. Durham,
England, DL5 6UP

Copyright 2024 Flymo S.A. All rights reserved.
Flymo and other product and feature names are
registered or unregistered trademarks of Flymo S.A.

The Husqvarna UK policy of continuous improvement and
updating means that specifications can be altered without
prior notice. All measurements quoted are approximate.