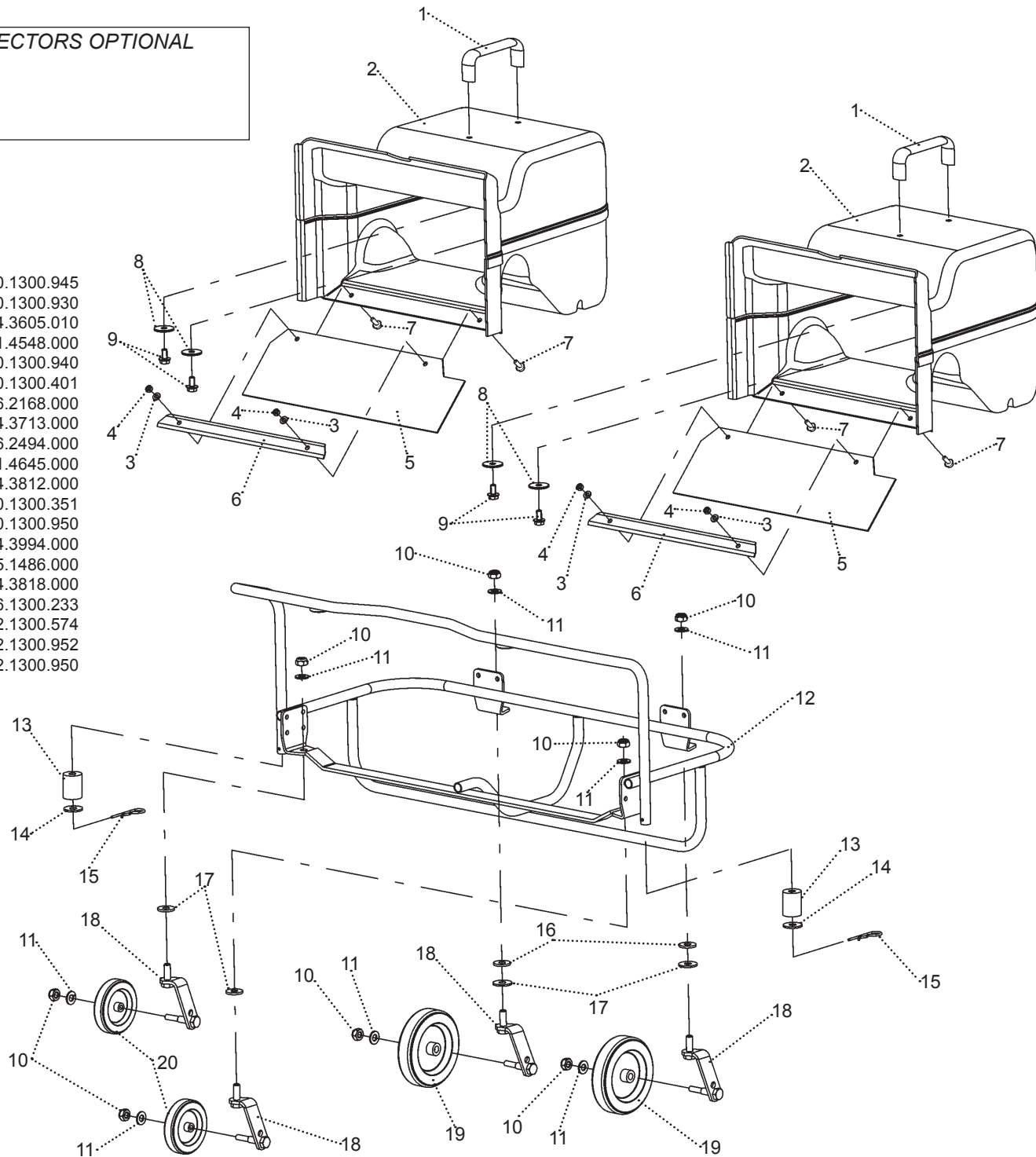
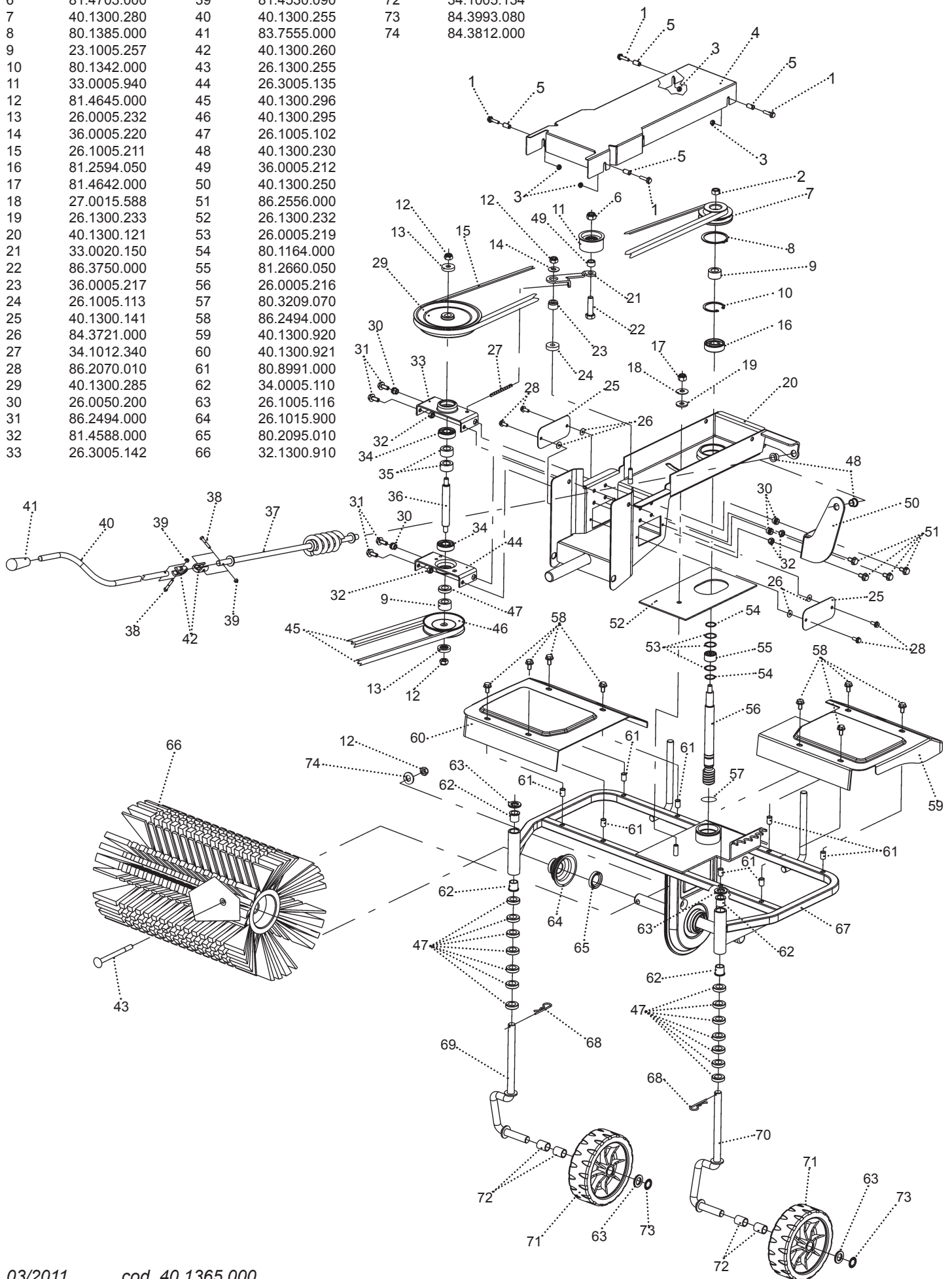


COLLECTORS OPTIONAL

1	40.1300.945
2	40.1300.930
3	84.3605.010
4	81.4548.000
5	40.1300.940
6	40.1300.401
7	86.2168.000
8	84.3713.000
9	86.2494.000
10	81.4645.000
11	84.3812.000
12	40.1300.351
13	40.1300.950
14	84.3994.000
15	85.1486.000
16	84.3818.000
17	26.1300.233
18	32.1300.574
19	32.1300.952
20	32.1300.950



1	86.2140.000	34	81.2586.000	67	40.1300.111
2	81.4667.000	35	26.0005.231	68	85.1486.000
3	81.4548.000	36	40.1300.290	69	40.1300.301
4	40.1300.131	37	40.1300.240	70	40.1300.300
5	80.8990.000	38	86.1937.000	71	34.1005.132
6	81.4703.000	39	81.4530.090	72	34.1005.134
7	40.1300.280	40	40.1300.255	73	84.3993.080
8	80.1385.000	41	83.7555.000	74	84.3812.000
9	23.1005.257	42	40.1300.260		
10	80.1342.000	43	26.1300.255		
11	33.0005.940	44	26.3005.135		
12	81.4645.000	45	40.1300.296		
13	26.0005.232	46	40.1300.295		
14	36.0005.220	47	26.1005.102		
15	26.1005.211	48	40.1300.230		
16	81.2594.050	49	36.0005.212		
17	81.4642.000	50	40.1300.250		
18	27.0015.588	51	86.2556.000		
19	26.1300.233	52	26.1300.232		
20	40.1300.121	53	26.0005.219		
21	33.0020.150	54	80.1164.000		
22	86.3750.000	55	81.2660.050		
23	36.0005.217	56	26.0005.216		
24	26.1005.113	57	80.3209.070		
25	40.1300.141	58	86.2494.000		
26	84.3721.000	59	40.1300.920		
27	34.1012.340	60	40.1300.921		
28	86.2070.010	61	80.8991.000		
29	40.1300.285	62	34.0005.110		
30	26.0050.200	63	26.1005.116		
31	86.2494.000	64	26.1015.900		
32	81.4588.000	65	80.2095.010		
33	26.3005.142	66	32.1300.910		



ISTRUZIONI D'USO SPAZZOLA

OPERATING INSTRUCTIONS BRUSH

BEDIENUNGSANLEITUNG KEHRMASCHINE

INSTRUCTIONS D'UTILISATION DU BALAI

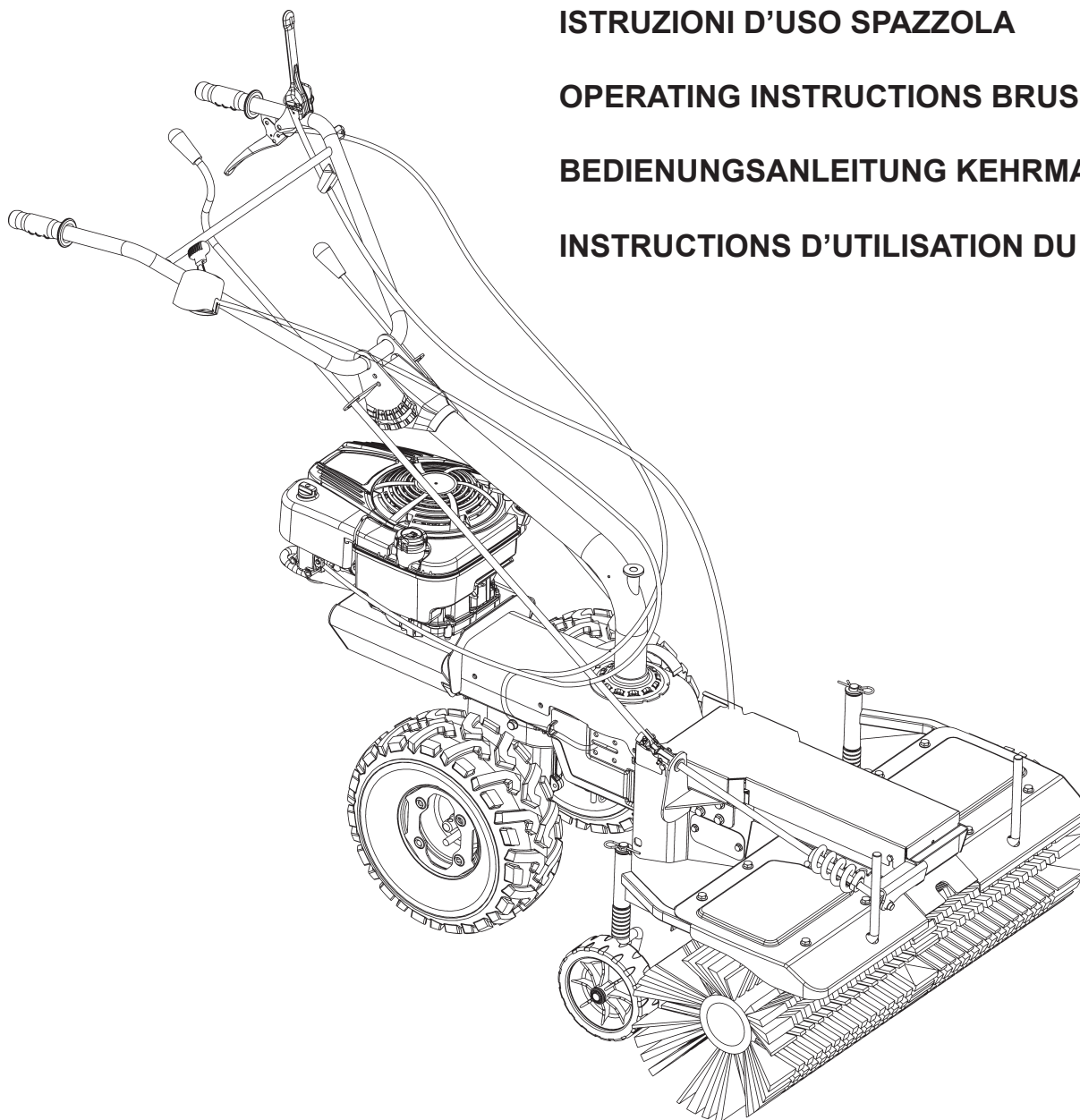


Fig. 1

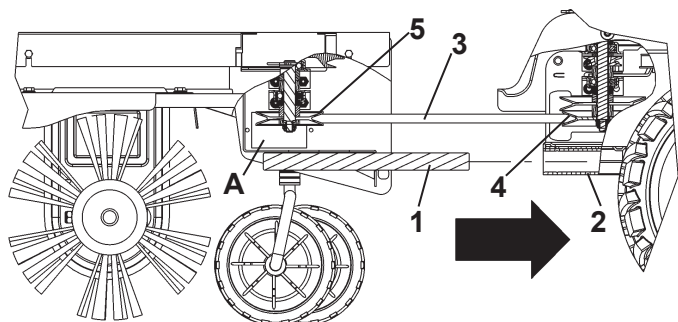


Fig. 1/A

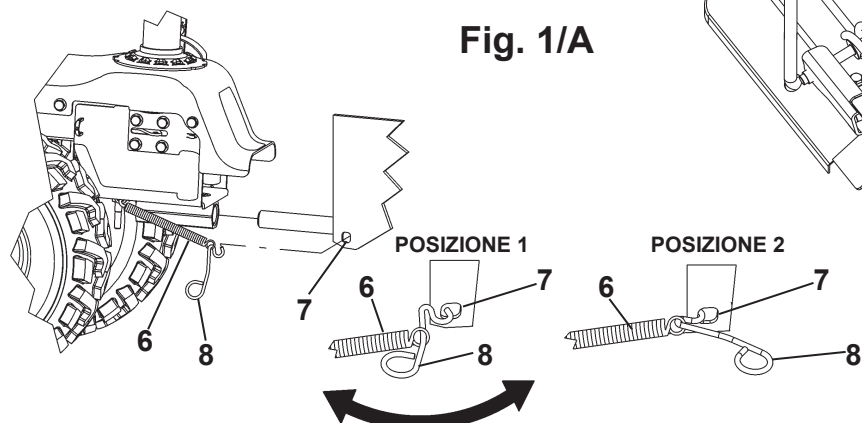


Fig. 2

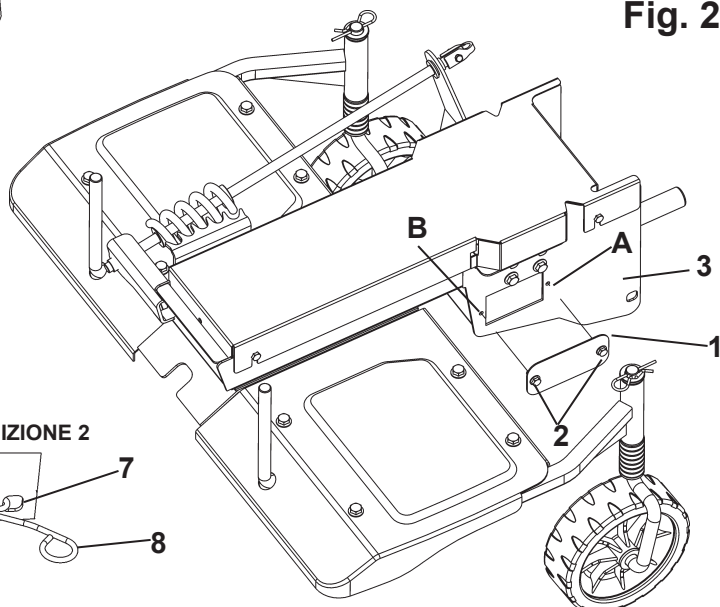


Fig. 3

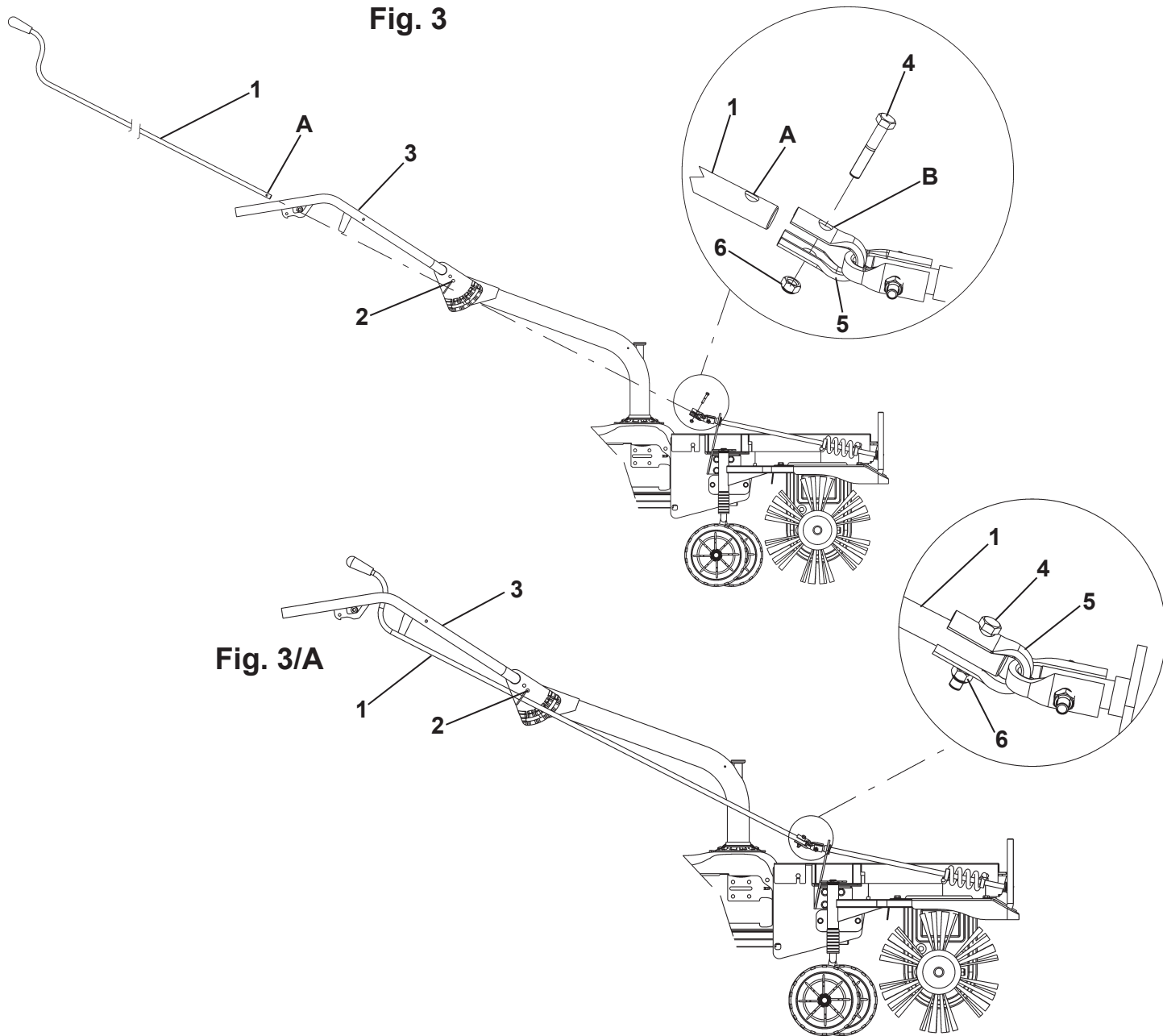


Fig. 3/A

ANTIORARIO
ANTICLOCKWISE
ENTGEGEN DEN UHRZEIGERSINN
SENS INVERSE HORAIRE

ORARIO
CLOCKWISE
UHRZEIGERSINN
SENS HORAIRE

Fig. 4

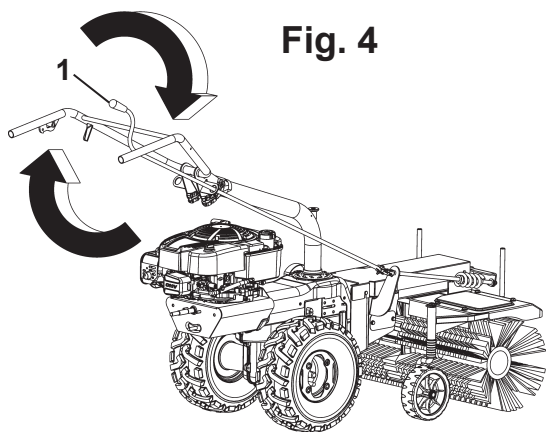


Fig. 4/A

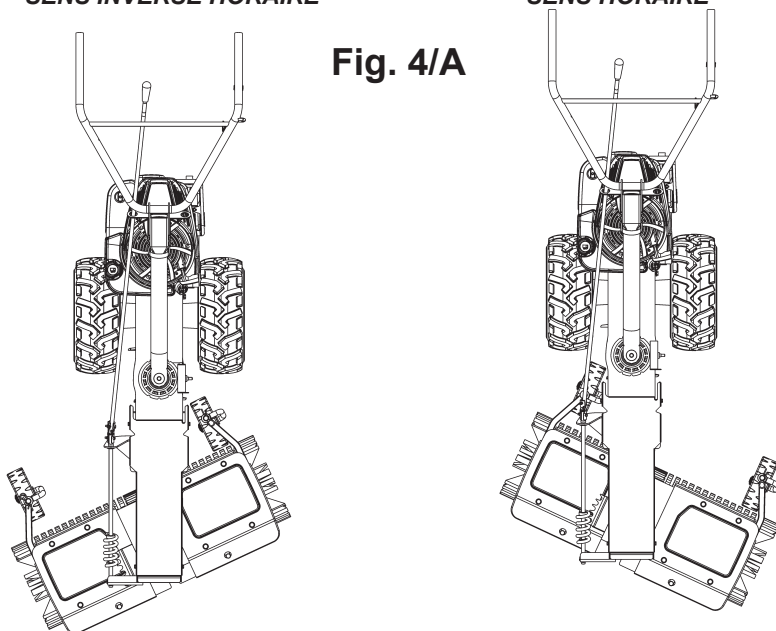
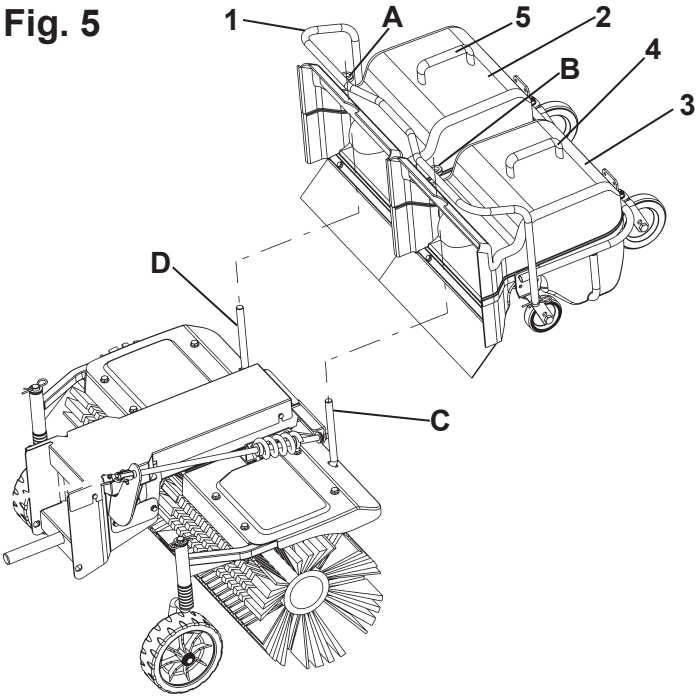


Fig. 5



RACCOGLITORE OPTIONAL
COLLECTORS OPTIONAL
SAMMELBEHÄLTER OPTIONAL
BAC OPTIONELLE

Fig. 5/A

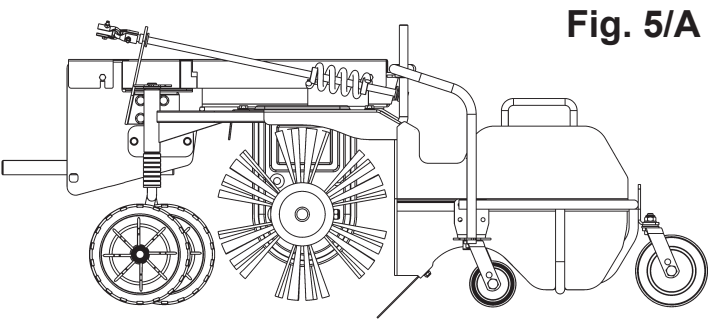


Fig. 6

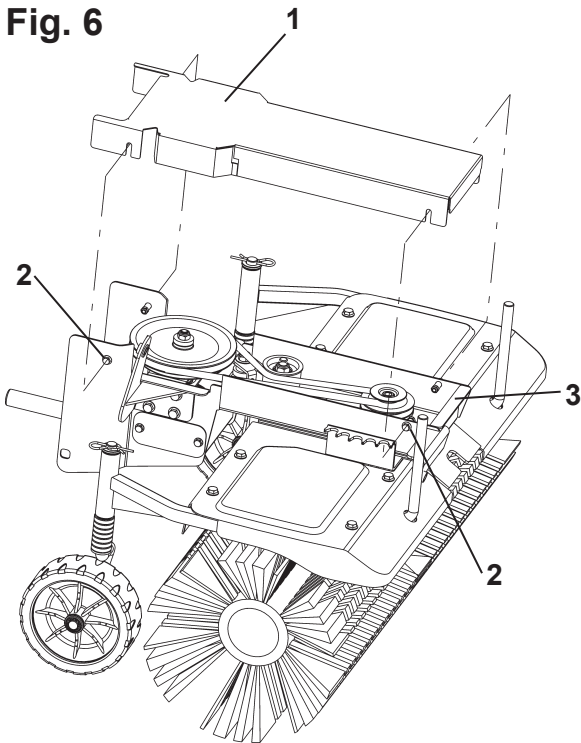


Fig. 6/A

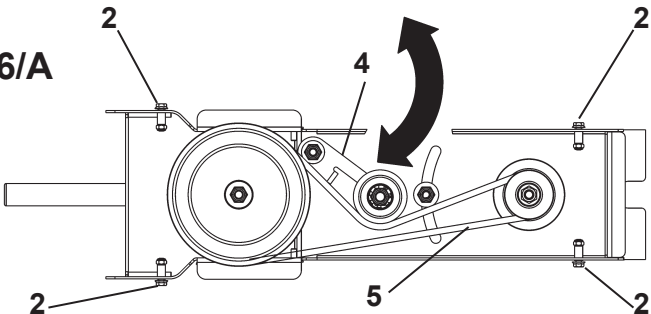


Fig. 6/B

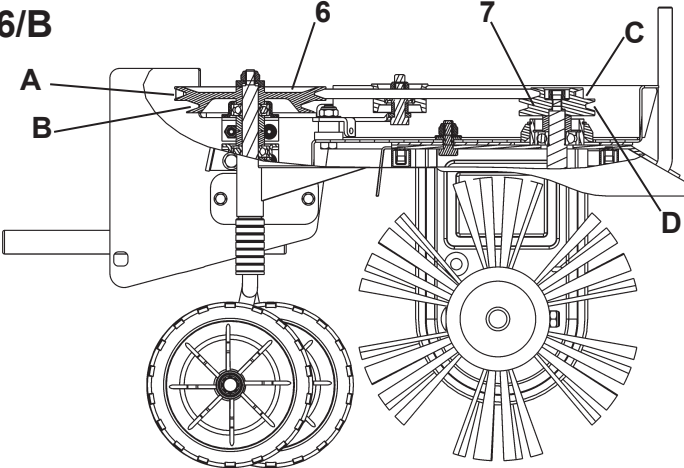
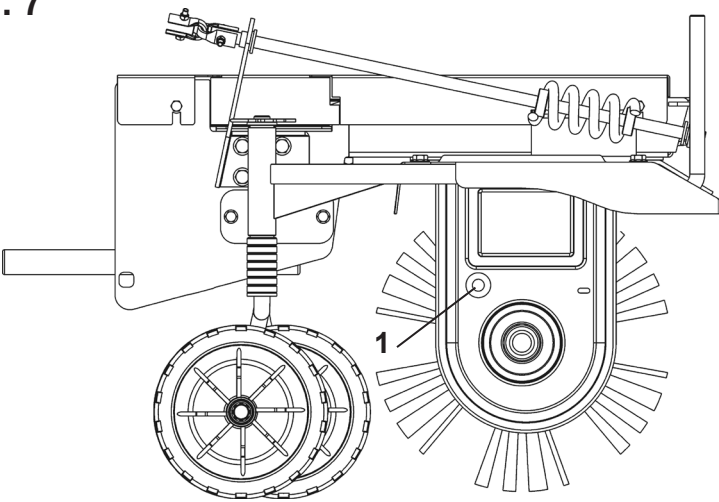


Fig. 7



WARNING: This note of utilization has to be integrated by the reading and by the observance of the rules written in the instruction and servicing manual.

HOW TO ASSEMBLE THE BRUSH (Fig. 1 and 1A) put the unit engine off and the machine in horizontal position and partially insert the pin (1) into the quick connection coupling (2) you can find in the machine. Assemble the belt (3) inserting it before the machine lower pulley groove (4) and then into the brush pulley groove (5) : such operation can be helped by the openings (A) which are placed on the attachment sides. Bring the pin all its end (1). Tighten the springs (6) into the slots (7) and prize with the ring (8). Please look at pic. 1A position 1 and 2. For the disassembly, please use the same ring (8), pulling into the opposite direction.

HOW TO ASSEMBLE THE SIDE COVERS (Fig. 2): take the side covers out from the fittings envelope (1) with the screws (2) which have already been assembled on the covers and screw them to the brush frame (3) using the corresponding slots (A) and (B).

HOW TO ASSEMBLE THE BRUSH ADJUSTMENT/ROTATION ROD (Fig. 3 end 3/A) : Insert the brush adjustment rod (1) into the slot (2) which can be found on the unit handlebar (3) until you can couple the slot (A) of the rod (1) with the slot (B) of the joint (5) you can find on the attachment ; fix the whole using the screw (4) and the nut (6).

BRUSH ROTATION /ADJUSTMENT SYSTEM : (Fig. 4 and 4/A) : in order to rotate the brushes you need to turn the rod (1) clockwise in order to move the brushes to the right direction and anticlockwise to dispose them to the left one.

HOW TO ASSEMBLE - EMPTY THE COLLECTORS (Fig. 5 and 5/A) OPTIONAL : for the collectors assembly (optional) it is enough to insert on the pins (C) and (D) the 2 spacers (A) and (B) which are welded on the frame (1) of the collector support.

Attention ! during the emptying operation of the collectors (2 and 3) you always need to remove first the collector number 2 (on the right side of the operator considering to stand in front of the machine) seizing it using the corresponding handle. Then you can pull out the collector number 3 in the same way as above described. in order to re-position the collectors, please act in reverse order as above described.

HOW TO ADJUST THE BRUSHES SPEED (Fig. 6 - 6/A and 6/B) : the brush was designed to collect :

- dust , thin gravel, etc..

- snow

using two different speeds for the brushes rotation.

In order to change the rotation speed , according to user's needs, it is necessary to disassemble the cover (1) loosening the four screws (2).

ATTENTION ! the screws should remain fixed to the frame (3).

Fig. 6 A : turn the belt stretcher (4) in order to be able to loosen the belt (5) and shift it from the upper groove (A) of the pulley (6) and from the upper groove (C) of the pulley (7) to the lower groove (B) of the pulley (6) and lower groove (D) of the pulley (7) and vice versa.

Fig. 6 B **ATTENTION :** when the belt is inserted into the upper grooves (A) and (C) into the corresponding pulleys (6) and (7) the brushes are quicker turning and are more suitable to collect the snow. When the belt is inserted into the lower grooves (B) and (D) of the corresponding pulleys (6) and (7) the brushes are more slowly turning so they are more suitable to collect the dust , leaves, thin gravel, etc..

HOW TO CHECK THE OIL LEVEL (fig.7) : place the machine on a flat surface. Remove the filler cap (1) and check if the oil to be level with the bottom of the hole, The filling and emptying cap does correspond to the oil level Use transmission oil : SAE 80.

ATTENTION ! the exhausted oil must not be drained into the sewer system or waterworks in order to prevent any pollution to the water-table. Most petrol pumps have exhausted oil deposits or use the authorized dump deposits according to your local authority regulations.

TECHNICAL DETAILS : brushes diameter Ø 300 mm. Total width: 880 mm. Unit + attachment length 2250 mm. Brushes speed. 145 rpm and 250 rpm..