

# COBRA

**MODEL: GCT320HD**

## **GARDEN CART TROLLEY OWNERS MANUAL**



### **CAUTION:**

Before using this product, please read this manual carefully to understand the proper use of your garden cart. Please keep this manual for future reference.

Product colours may vary.

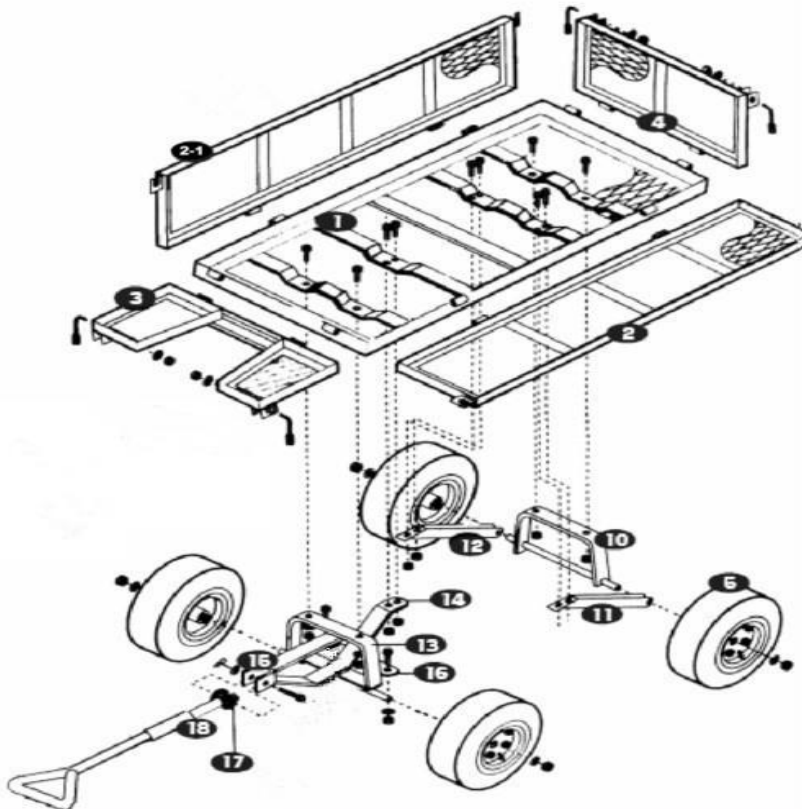
**PLEASE NOTE: NEVER CARRY PASSENGERS IN THE GARDEN CART TROLLEY**

## IMPORTANTANT SAFETY INSTRUCTIONS

### READ ALL INSTRUCTIONS CAREFULLY BEFORE USE.

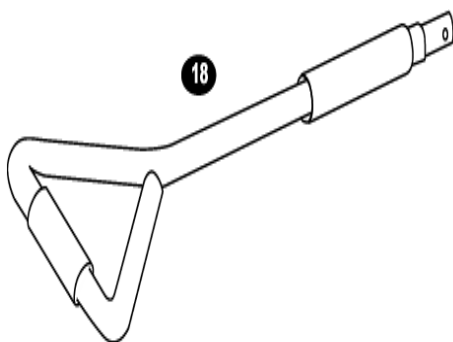
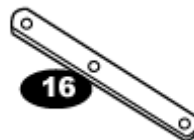
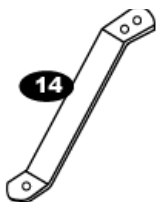
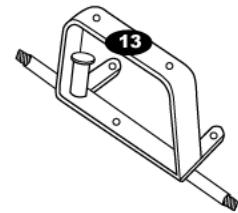
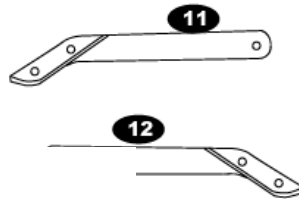
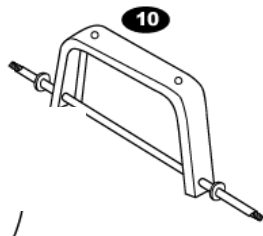
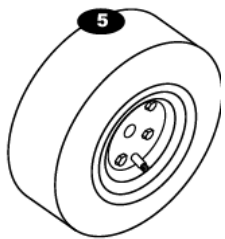
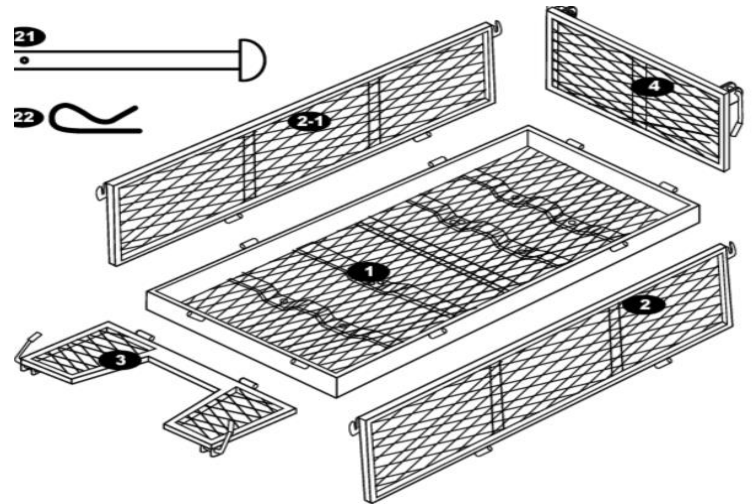
1. Do not allow children to use the Garden Cart Trolley unsupervised. It is NOT a toy.
2. Always distribute payload evenly over the surface of the bed.
3. Do not lay any items on top of the fence. Lower the fence side panels before loading objects into the Garden Cart Trolley.
4. Do not load the Garden Cart Trolley with more than 300kgs.
5. If any parts become damaged, broken or misplaced do not use the Garden Cart Trolley until replacement parts can be obtained and fitted.
6. Do not operate or use on objects than can cause damage to the pneumatic tires or tubes.
7. Do not inflate tires to more than 30 psi.

**PLEASE NOTE: NEVER CARRY PASSENGERS IN THE GARDEN CART TROLLEY**



# Parts List

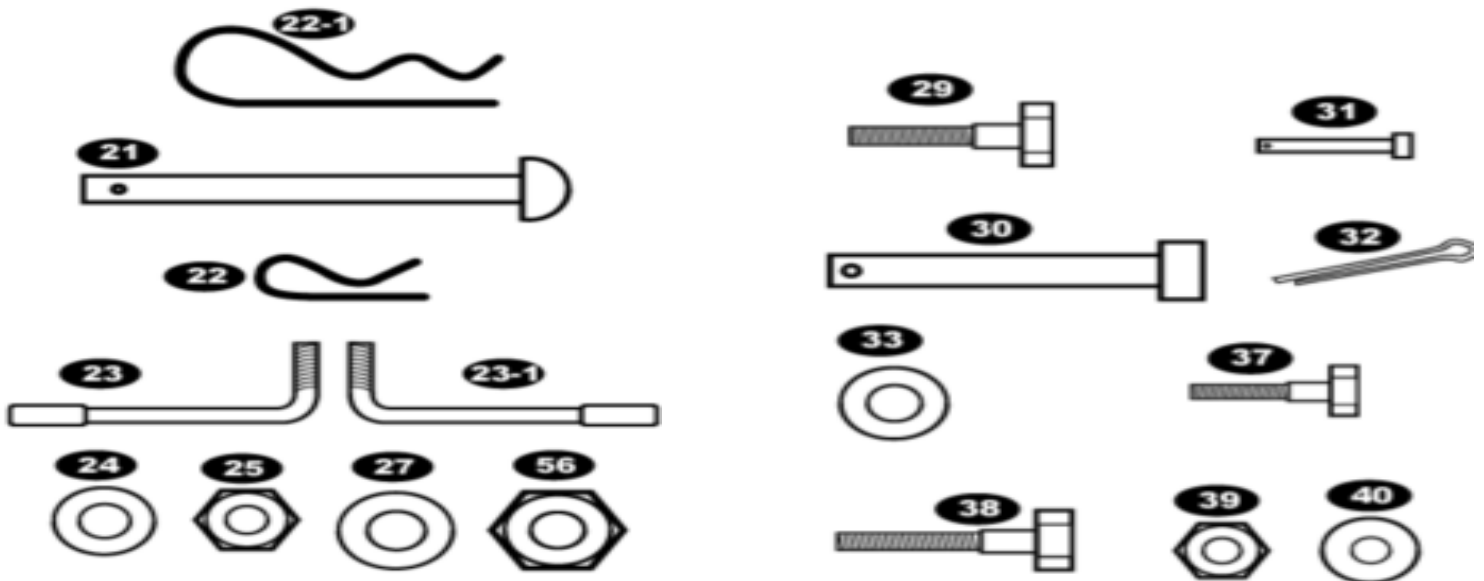
Part #	Description	Quantity
1	Cart Bed	1
2	Left Fence Panel	1
2-1	Right Fence Panel	1
3	Front Fence Panel	1
4	Back Fence Panel	1
5	Wheels	4
10	Rear Axle Support	1
11	Left Rear Axle Brace	1
12	Right Rear Axle Brace	1
13	Front Axle Support	1
14	Center Front Axle Brace	1
15	Yoke	1
16	Steering Link Connector	1
17	Plastic Coupling	1
18	Pull Handle	1



# Hardware List

Part #	Description	Quantity
21	Fence Assembly Bolts (used w/part 22)	8
22	Large Lock Pins	2
22-1	Small Lock Pins	8
23	Right Lock Handles	2
23-1	Left Lock Handles	2
24	8mm Washers	15
25	Nuts with Lock Inserts	14
27	12mm Washers	4
29	Carriage Support Bolts (used with parts# 24 & 25)	10
30	Large Columnar Pin (used with part# 22-1)	1
31	Small Columnar Pin (used with part# 22-1)	1
32	Cotter Pin	1
33	Retainer Washer (used with part # 32)	1
37	Short Steering Bolts (used with parts# 39 and 40)	3
38	Long Steering Bolt (used with parts# 39 and 40)	1
39	Lock Nuts	4
40	6mm Washers	4
56	Wheel Lock Nuts	4

**\*Hardware shown is not the actual size.**



# Assembly Instructions

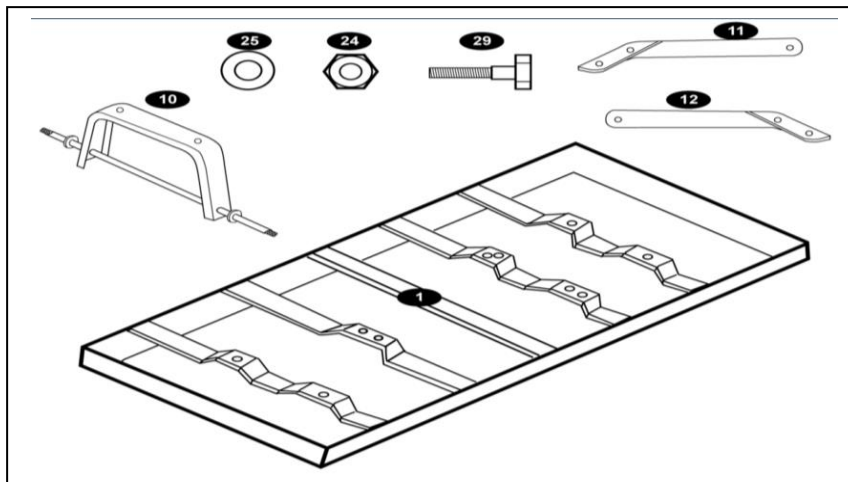
## STEP 1- To Begin

Turn the cart bed (1) upside down. If necessary, use the cardboard from the carton to prevent scratching and damage to the finish.

## STEP 2 - Rear Axle Assembly

### Parts and Hardware Required:

Part #	Description	Quantity
10	Rear Axle Support	1
1	Cart Bed	1
11	Left Rear Axle Brace	1
12	Right Rear Axle Brace	1
29	Carriage Support Bolts	6
24	8mm Washers	6
25	8 mm Nuts	6



**Fig. 1**

a) Align the holes in the rear axle support (10) with the holes At the rear of the cart bed (1).

b) Insert a carriage support bolt (29) from under the cart and Through the aligned holes.

c) Attach an 8mm washer (24) and an 8mm nut (25) to The ends of each bolt.

**Note:** Hand-tighten the connection. Do not tighten completely.

d) Insert the end of the left rear axle brace (11) onto the left side of The rear axle support with the welded spacer bushings facing Outward. Repeat this step for the right rear axle brace (12).

e) Align the holes on the flat ends of the left and rear axle braces with the holes on the cart bed.

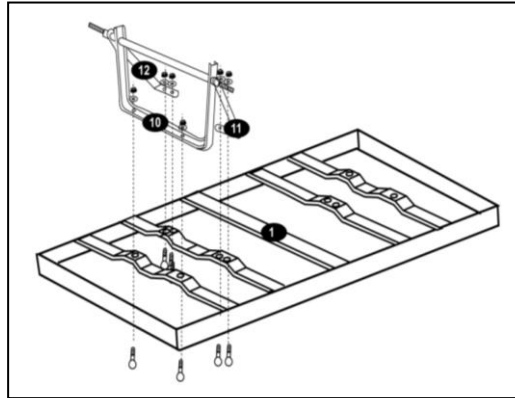
**Note:** If you experience difficulty lining up the holes, loosen the bolts on the rear axle support until the holes on the braces align.

f) Insert carriage support bolts (29) from under the cart and into the aligned holes.

g) Attach an 8 mm washer (24) and an 8mm nut (25) to the ends of each bolt.

(Please see Fig.1)

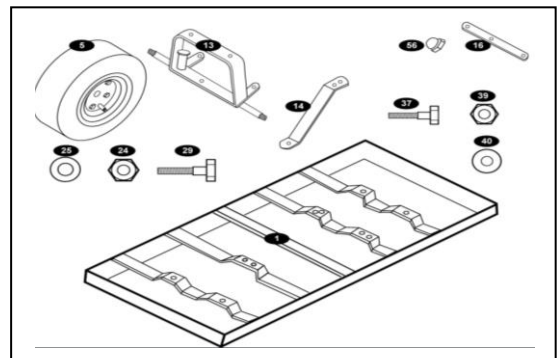
**Note:** Once attached, tighten all bolt connections in the previous steps.



### STEP 3 - Front Axle Assembly

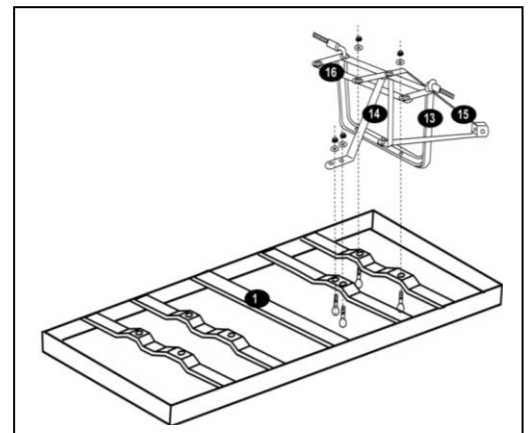
#### Front Axle Assembly Parts List

Part#	Description	Quantity
1	Bed	1
13	Front Axle Support	1
14	Center Front Axle Brace	1
16	Steering Link Connector	1
29	Carriage Support Bolts	4
24	8mm Washers	4
25	8mm Nuts	4
37	Short Steering Bolts	2
40	6mm Washers	2
39	6mm Nuts	2

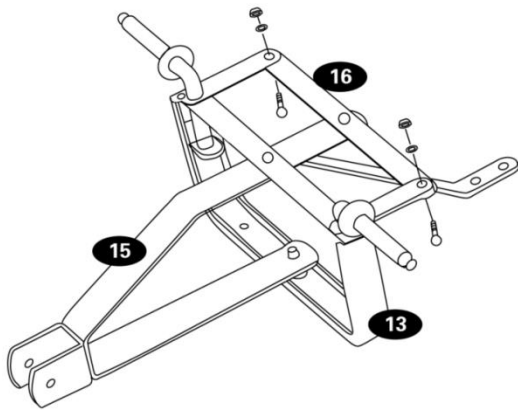


- Align the holes in the front axle support (13)  
With the holes in the cart bed.
- Insert a carriage support bolt (29) from under the cart  
and through the aligned holes.
- Attach an 8mm washer (24) and nut (25) to the ends of each bolt.  
**Note:** Make certain the threaded axle pieces face outward  
and the axle guides face the back of the cart.  
Align the holes in the center front axle brace (14)  
With the holes in the cart bed.
- Insert two carriage support bolts (29) from under the cart and into the  
aligned holes.
- Attach an 8mm washer (24) and 8mm nut (25) to the ends of each bolt,  
and tighten. (please see Fig.2)
- Align the holes in the steering link connector (16) beneath the holes in  
the axle guides.
- Insert two short steering bolts (37) through the aligned holes.
- Attach a 6mm washer (40) and a 6mm nut (39) to the ends of each  
bolt.(please see Fig.2-1)

**Note:** Leave at least one full turn on each bolt connection to allow for smooth steering operation.



**Fig. 2**

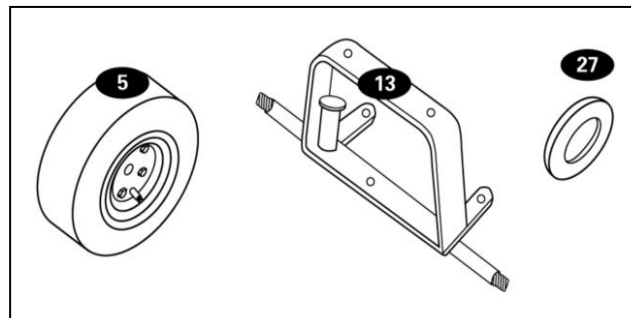


**Fig. 2-1**

#### STEP 4 - Wheel Assembly

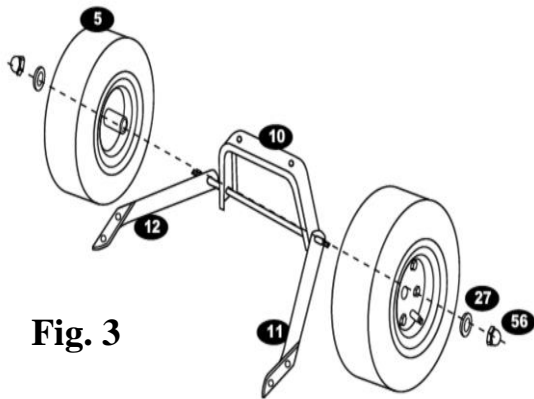
##### Wheel Assembly Parts List

Part#	Description	Quantity
5	Wheels	4
27	12mm Washers	4
56	12mm Lock Nuts	4

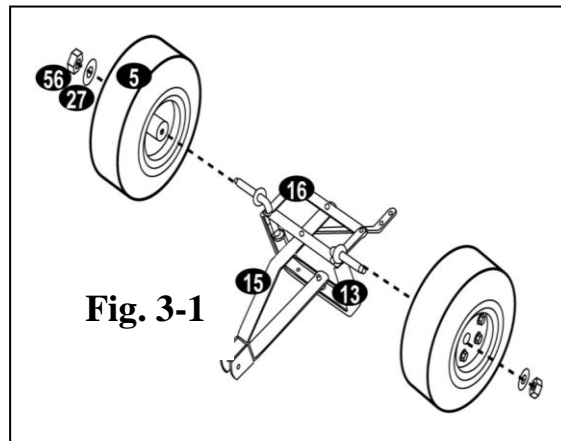


- Place the wheels (5) onto the ends of the front and rear axle supports.
- Insert a 12mm washer (27) and a lock nut (56) onto the ends of each wheel.(please see Fig.3 & Fig.3-1)

**Note:** For smooth wheel rotation, do not over tighten the wheel connections.



**Fig. 3**

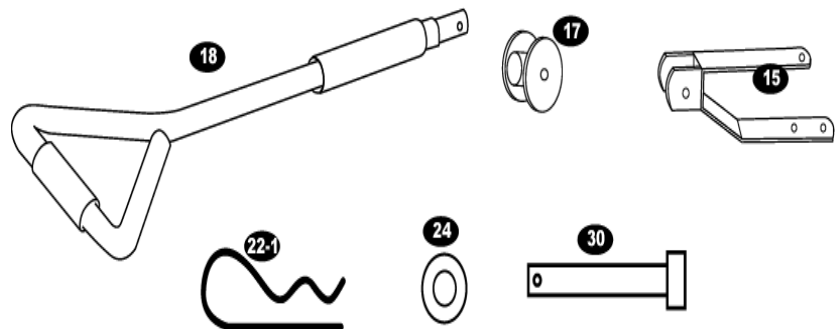


**Fig. 3-1**

#### STEP 5 - Pull Handle Assembly

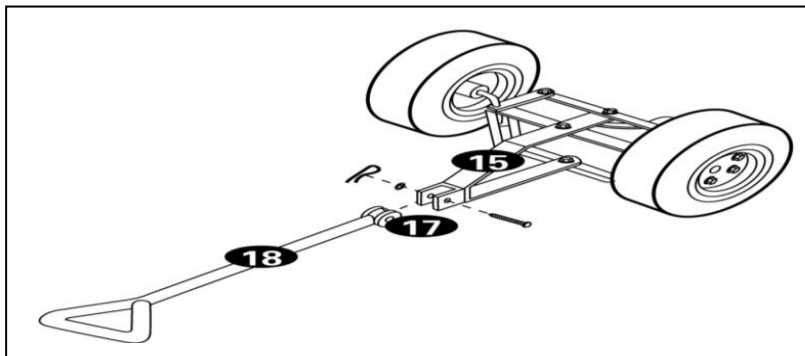
##### Pull Handle Assembly Parts List

Part#	Description	Quantity
17	Plastic Coupling	1
18	Pull Handle	1
22-1	Lock Pin	1
24	8mm Washer	1
30	Columnar Pin	1



- Remove the column bar pin (30) from the plastic coupling (17).

- b) Insert the end of the pull handle (18) into the plastic coupling (17). **Note:** Make certain the holes in the pull handle are aligned with the holes in the plastic coupling.
- c) Place the pull handle (18) and plastic coupling (17) assembly into the yoke (15).
- d) Align the holes in the pull handle and plastic coupling with the holes on the yoke.
- e) Insert the column bar pin (30) through the aligned holes and secure the connection with a washer (24) and a lock pin (22-1)( please see Fig.4).



**Fig. 4**

### STEP 6 - Lock Handle Assembly

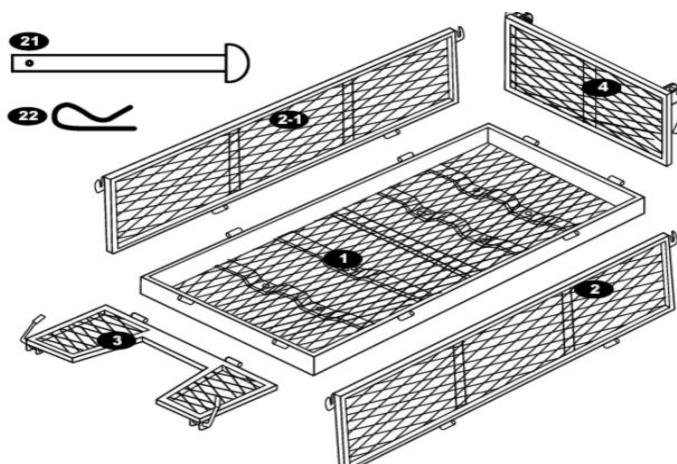
**Note:** In some models, the lock handles may already be assembled to the fence panels.

- a) Insert the left lock handle (23-1) and the right lock handles through the holes in the front fence panel (3) and back fence panel (4).
- b) Attach an 8mm washer (24) and an 8 mm nut (25) to the ends of each lock handle, and tighten the connection securely.

### STEP 7- Fence Panel Assembly

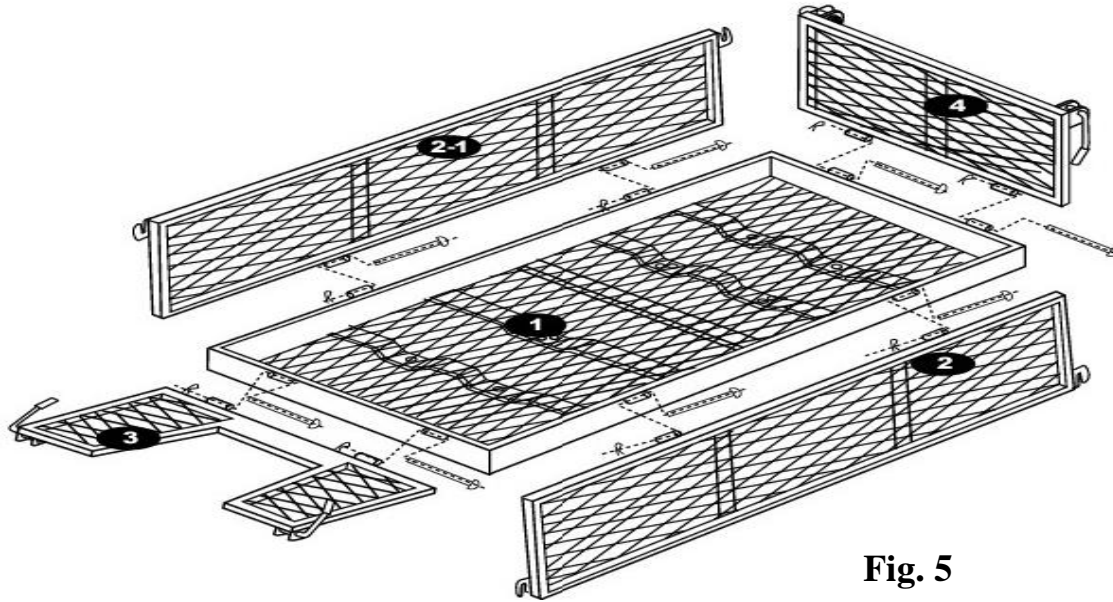
#### Fence Panel Assembly Part List

Part#	Description	Quantity
2	Left Panel Fence	1
2-1	Right Panel Fence	1
3	Front Panel Fence	1
4	Back Panel Fence	1
21	Fence Assembly Bolts	8
22	Lock Pins	8



- a) Turn the cart in the upright position.
- b) Align the holes on the left fence panel (2) with the holes on the left side of the cart. **Note:** Make certain the hinges on the side of the left fence panel face outward.
- c) Insert a fence assembly bolt (21) through the aligned hole.
- d) Place a lock pin (22) onto the ends of each fence assembly bolt.
- e) Repeat the steps for the right fence panel (2-1).
- f) Align the holes on the front fence panel (3) with the holes on the front of the cart. **Note:** Make certain the lock handle on the side of the front fence panel faces outward.
- g) Insert a fence assembly bolt through the aligned holes.
- h) Place a lock pin onto the ends of each fence assembly bolt.
- i) Repeat the step for the back fence panel (4).
- j) Pull the left fence panel and back fence panel up.
- k) Turn the lock handle on the back fence panel so that it fits snugly into the hinge at the corner of the left fence panel.
- l) Repeat this step for the remaining corners of the cart. (please see Fig.5)





**Fig. 5**

### **Step 8-Basket**

Place the basket (34) on top of the left and side fence panel.



### **Tow Warnings**

- Do not tow the cart on steep hills.
- Do not tow the cart faster than walking pace.
- Make slow turns to avoid damage to the cart and its contents.

### **Step 9 -Tire Inflation**

- A) Before attempting to operate the cart, check the air pressure of each tire.
- B) If additional inflation is needed, use only a hand-operated air pump.
- C) DO NOT exceed 32 psi. as damage to the tire(s) and/or personal injury could result.

**Store your cart covered or indoors to prevent corrosion.**