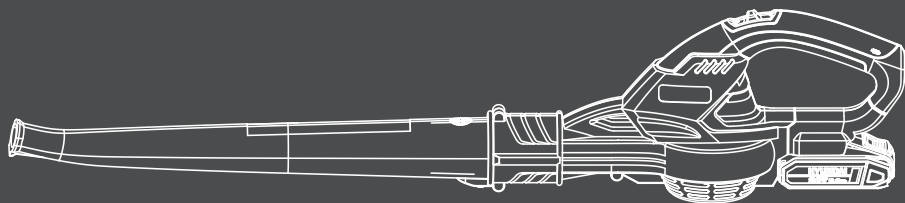


HYUNDAI
POWER PRODUCTS

CORDLESS BLOWER HY20CB

INSTRUCTION MANUAL



WARNING: READ THE INSTRUCTIONS CAREFULLY BEFORE USE.

ISS: NOV/24

Contents

Introduction.....	3
Safety Information.....	4
Unboxing.....	14
In The Box.....	15
Features.....	17
Assembly.....	19
Operation.....	23
Maintenance & Care.....	26
Technical Data.....	27
Recycling & Disposal.....	28
EU Declaration Of Conformity.....	30
Notes.....	31
Useful Information.....	32
Product record.....	33
Contact Us.....	34

Introduction

Thank You For Purchasing Your HYUNDAI Product

We work very hard to give all of our customers the best possible service. If you have any problems, before leaving negative feedback, please contact us to give us a chance to resolve the issue. We would be delighted if you left us positive feedback! Thank you for purchasing this product.

Important!



WARNING: READ THE INSTRUCTION BOOKLET THOROUGHLY BEFORE USING THE MACHINE. Keep for future reference and pass it on if the machine is loaned or sold to another user.

This manual has been prepared by Hyundai Power Products and should remain with the product. Please read and fully understand these instructions before using your product. Failure to do so may result in personal injury or cause damage to the product.

The safety precautions and warnings provided are designed to prevent misuse, ensuring your safety and protecting the product from damage.

While the information in this manual was accurate at the time of publication, Hyundai Power Products reserves the right to make modifications to the product without prior notice.

For the latest version of this manual, please visit hyundaipowerequipment.co.uk.

Safety Information

General Power Tool Safety Warnings

WARNING Read all safety warnings and all instructions. Failure to follow the warnings and instructions may result in electric shock, fire and/or serious injury.

Save all warnings and instructions for future reference.

The appliance is only to be used with the power supply unit provided with the appliance.

IMPORTANT

READ CAREFULLY BEFORE USE.

KEEP FOR FUTURE REFERENCE.

Safe Operating Practices

Pre-operation Precautions

- a) Carefully read and understand the instructions before use. Familiarize yourself with the controls and proper operation of the machine.
- b) Do not allow children, individuals with reduced physical, sensory, or mental capabilities, those lacking experience or knowledge, or anyone unfamiliar with these instructions to operate the machine. Local regulations may also impose age restrictions for operators.
- c) Never operate the machine when others, especially children or pets, are nearby.
- d) Remember, the operator is responsible for any accidents or hazards that may occur, affecting other people or their property.

Preparation

- a) Always wear sturdy footwear and long trousers when operating the machine. Avoid operating the machine barefoot or in open sandals. Refrain from wearing loose-fitting clothing or garments with dangling cords or ties.
- b) Do not wear loose clothing or jewelry that could be drawn into the air inlet. Ensure long hair is kept away from the air inlets.
- c) Use appropriate ear protection and safety glasses, and wear them at all times during operation.
- d) Operate the machine only in the recommended position and on a stable, level surface.
- e) Avoid using the machine on paved or gravel surfaces, as ejected material could pose a risk of injury.

Safety Information

f) Before use, always perform a visual inspection to ensure all fasteners are secure, the housing is intact, and the guards and screens are properly in place. Replace any worn or damaged components as a set to maintain balance. Additionally, replace any damaged or unreadable labels.

Operation

- a) Ensure the feeding chamber is completely empty before starting the machine.
- b) Keep your face and body at a safe distance from the feed intake opening.
- c) Never place hands, clothing, or any part of your body inside the feeding chamber, discharge chute, or near any moving parts.
- d) Maintain proper balance and footing at all times. Avoid overreaching.
- e) Always stay clear of the discharge zone while operating the machine.
- f) If the machine produces unusual noise or vibrations, immediately shut off the power source and allow the machine to stop completely. Remove the battery pack, then perform the necessary checks and adjustments before restarting and resuming operation.
- i) inspect for damage;
- ii) replace or repair any damaged parts;
- iii) check for and tighten any loose parts.
- g) Prevent processed material from accumulating in the discharge zone, as this may obstruct proper discharge and cause material to kick back through the intake opening.
- h) If the machine becomes clogged, turn off the power source and remove the battery pack before clearing any debris.
- i) Never operate the machine with damaged or missing guards, shields, or safety devices.
- j) Keep the power source free from debris and other build-up to avoid potential damage or fire hazards.
- k) Do not transport the machine while the power source is running.
- l) Always disconnect the machine from the power supply (e.g., remove the battery pack) before performing maintenance, cleaning, or storage.
- whenever you leave the machine,
- before clearing blockages or unclogging chute,
- before checking, cleaning or working on the machine.
- m) Avoid using the machine in bad weather conditions especially when there is a risk of lightning

Safety Information

Maintenance and Storage

- a) Ensure all nuts, bolts, and screws are tightened securely to maintain safe operation of the appliance.
- b) Replace any worn or damaged parts promptly.
- c) Use only genuine replacement parts and accessories for optimal performance and safety.
- d) Store the machine in a dry location, out of reach of children.
- e) When stopping the machine for servicing, inspection, storage, or accessory changes, turn off the power source, disconnect it from the supply, and ensure all moving parts have come to a complete stop. Allow the machine to cool before performing any inspections, adjustments, or maintenance. Keep the machine clean and well-maintained.
- f) Always store the machine in a dry, secure place away from children.
- g) Allow the machine to cool completely before storing it.
- h) Never attempt to bypass or disable the interlock feature of the guard.

Safety Warnings for Lithium Battery Pack

WARNING: DO NOT use these batteries if they become damaged, swollen or hot during charging or use

- a) Do not dismantle, open, or shred the battery cells or battery pack.
- b) Avoid short-circuiting the battery pack. Do not store battery packs in a disorganised manner, such as in a box or drawer where they could short-circuit each other or be short-circuited by conductive materials. When not in use, keep the battery pack away from metal objects like paper clips, coins, keys, nails, screws, or other small items that could bridge the terminals. Short-circuiting the battery terminals may cause burns or a fire.
- c) Do not expose the battery pack to heat or fire, and avoid storing it in direct sunlight.
- d) Do not subject the battery pack to mechanical shock.
- e) If the battery begins to leak, avoid contact with the liquid. If contact occurs, wash the affected area thoroughly with water and seek medical advice immediately.
- f) Keep the battery pack clean and dry.
- h) If the battery pack terminals become dirty, wipe them with a clean, dry cloth.
- g) Battery pack needs to be charged before use. Always refer to this instruction and use the correct charging procedure.
- h) Do not keep the battery pack on charge when not in use.
- i) After extended periods of storage, it may be necessary to charge


www.hyundaipowerproducts.co.uk

Safety Information

and discharge the battery pack several times to restore its maximum performance.

- j) Only recharge the battery pack using the charger supplied and specified by Hyundai. Do not use any other charger not designed for use with the equipment.
- k) Never use a battery pack that is not specifically designed for use with the equipment.
- l) Keep the battery pack out of the reach of children.
- m) Retain the original product literature for future reference.
- n) Always remove the battery from the equipment when not in use.
- o) Dispose of the battery properly, in accordance with local regulations.
- p) Do not mix batteries from different manufacturers, capacities, sizes, or types within the same device.
- q) Keep the battery away from microwaves and high-pressure environments.
- r) Warning! Never use non-rechargeable batteries.

SAFETY WARNINGS FOR CHARGER

 **WARNING!** Carefully read all safety warnings and instructions. Failure to follow the instructions below may result in electric shock, fire, and/or serious injury.

Keep all warnings and instructions for future reference.

WARNING! Never allow children or people unfamiliar with these instructions to use the product. Local regulations can restrict the minimum age of the operator. Keep children, pets, and other people not using the unit a sensible distance away from the work area. Be alert and shut off the unit if anyone enters work area. Keep children under the watchful care of a responsible adult.

If the supply cord is damaged, it must be replaced by the manufacturer, its service agent, or a certified/trained professional to avoid potential hazards.

- a) Before charging, read the instructions.
- b) Do not charge a leaking battery.
- c) Do not use chargers for anything other than charging the specific battery for this product.
- d) Before charging, ensure your charger matches the local AC supply.
- e) For indoor use. DO NOT expose to rain.
- f) The charging device must be protected from moisture.
- g) Do not use the charging device outdoors.
- h) Do not short out the contacts of battery or charger.

Safety Information

- i) Always observe the correct polarity ("+/-") when charging.
- j) Do not open the unit and keep it out of the reach of children.
- k) Do not charge batteries from other manufacturers or incompatible models.
- l) Ensure the connection between the battery charger and the battery is properly positioned and free from any obstructions.
- m) Keep the charger's slots clear of foreign objects and protect them from dirt and moisture. Store the charger in a dry, frost-free location.
- n) When charging batteries, ensure the charger is placed in a well-ventilated area, away from flammable materials. Batteries may become hot during charging. Never overcharge batteries, and do not leave them unsupervised during the charging process.
- o) Never recharge non-rechargeable batteries, as they may overheat and break.
- p) For optimal performance and longer battery life, charge the battery pack when the ambient temperature is between 18°C and 24°C. Do not charge the battery pack in temperatures below 0°C or above 40°C to prevent serious damage.
- q) Only charge battery packs of the same model as provided by the manufacturer or those recommended by the manufacturer.

Safety Information

Noise & Vibrations (Where Applicable)

The declared total vibration value can be used to compare different tools and to provide a preliminary assessment of exposure.

WARNING: The actual vibration emission value during use may differ from the declared value, depending on various factors such as:

How the tool is used in relation to the task being carried out.

Whether the tool is in good condition and well-maintained.

Using the correct accessory for the tool and ensuring it is sharp and in good condition.

The firmness of the grip on the handles and the use of any anti-vibration accessories.

Whether the tool is being operated as intended in relation to its design and these instructions.

Improper management of tool use can lead to hand-arm vibration syndrome.

WARNING: For an accurate assessment of exposure, consider all aspects of the operating cycle, including periods when the tool is switched off or running idle without performing work. These factors can significantly reduce the overall exposure level over the total working period.

Tips to Minimize Vibration Exposure Risk:

Always use sharp chisels, drills, and blades.

Maintain the tool in good condition as per these instructions, ensuring it is well-lubricated where applicable.

For regular use, invest in anti-vibration accessories.

Plan your work schedule to distribute high-vibration tool use over several days.

Residual Risks

Even when tool is used as prescribed it is not possible to eliminate all residual risk factors. The following hazards may arise depending the task being carried out:

1. Damage to lungs if an effective dust mask is not worn.
2. Damage to hearing if effective hearing protection is not worn.

www.hyundaipowerproducts.co.uk

Safety Information

Prolonged or improper use of the power tool, along with inadequate maintenance, may lead to health issues caused by vibration emissions

WARNING: This machine generates an electromagnetic field during operation, which may interfere with active or passive medical implants under certain conditions. To minimize the risk of serious or fatal injury, individuals with medical implants should consult their physician and the implant manufacturer before using this machine.

Safety Information

Intended Use

The HY20CB is an battery powered blower from HYUNDAI.

This machine is a garden tool. The machine is manufactured according to the latest safety requirements. Every precaution is only effective when it is followed exactly.

Intended Use

The blower is intended for blowing debris.

User Types

This product is for personal domestic DIY use only.

It is not suitable for commercial, industrial, or trade use.

Improper Use

It's not intends for use indoors for water suction cleaning and animal grooming.

Safety Information

Symbol

Appropriate Personal Protective Equipment (PPE), MUST be worn at all times when operating or repairing the machine. No protective equipment can ensure 100% protection.

When selecting PPE, make sure it's CE marked and it suits the user in terms of size, fit, etc. If more than one item of PPE is worn at the same time, make sure they can be used together, e.g. wearing safety glasses may disturb the seal of a respirator, causing air leaks.



To reduce the risk of injury, user must read instruction manual



Read the operator's manual



Warning



Wear eye protection



Do not expose to rain



Warning of hazard



Keep bystanders away



Do not burn

Safety Information



Batteries may enter water cycle if disposed improperly, which can be hazardous for ecosystem. Do not dispose of waste batteries as unsorted municipal waste.



Li-Ion battery This product has been marked with a symbol relating to 'separate collection' for all battery packs and battery pack. It will then be recycled or dismantled in order to reduce the impact on the environment. Battery packs can be hazardous for the environment and for human health since they contain hazardous substances.



Read operator's manual



For indoor use only



Positive terminal



Negative terminal



Double insulation



Fuse



Waste electrical products must not be disposed of with household waste. Please recycle where facilities exist. Check with your local authorities or retailer for recycling advice.

Unboxing

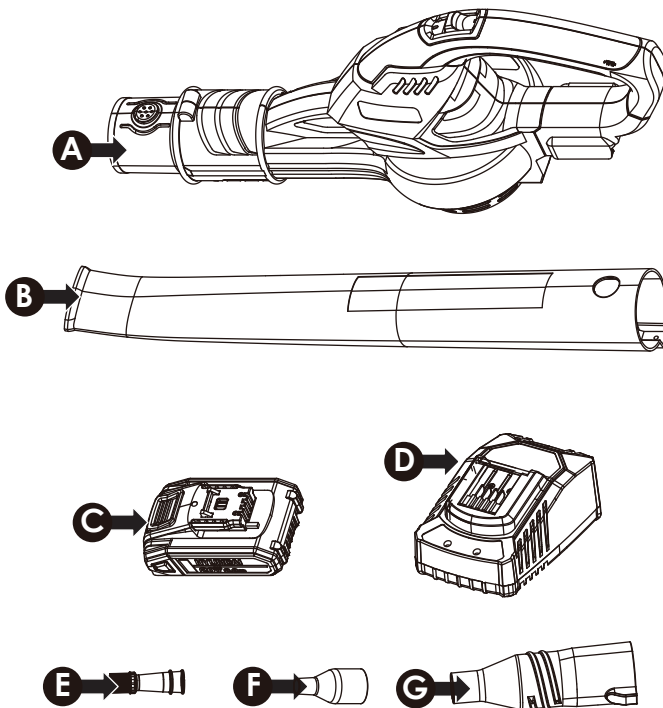
⚠ WARNING: Unboxing and assembling the machine should be done on a flat, surface with enough room. Disposal of the packaging should be done in accordance with the local regulations in force.

⚠ WARNING: Some of the packaging material may be harmful to children. Keep out of reach of children.

1. Carefully unpack the product and inspect it for any signs of damage that may have occurred during shipping.
2. Lay out all the contents and verify them. Do not use the machine if any parts are damaged or missing. Contact HYUNDAI POWER PRODUCTS immediately for assistance.
3. Retain the packaging materials in case the machine needs to be returned or repaired.
4. Ensure that you have all necessary accessories, tools for assembly and operation, as well as appropriate personal protective equipment.

In The Box

*Not To Scale



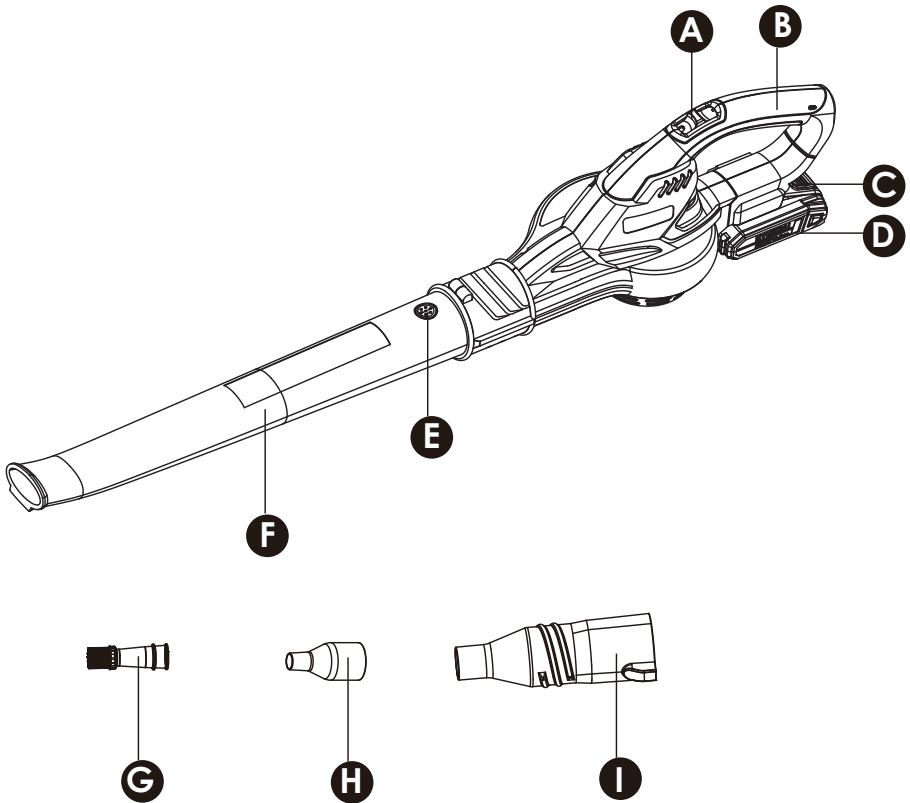
Descriptions on next page ➡

www.hyundaipowerproducts.co.uk

In The Box

- A** Blower housing
- B** Long blower tube
- C** Battery pack
- D** Charger
- E** Air detail brush
- F** Air dusting tube
- G** Short blower tube

Features



Features

- A** On/off switch
- B** Handle
- C** Battery pack release button
- D** Battery pack
- E** Tube release button
- F** Long blower tube
- G** Air detail brush
- H** Air dusting tube
- I** Short blower tube

Assembly

Assembly Overview

There are 2 steps to the assembly:

STEP 1. Assembling the blower tube

STEP 2. Battery Charging and Installation

STEP 1 : Assembling the blower tube

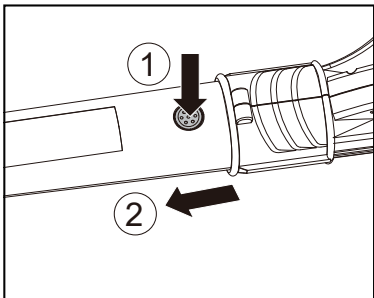
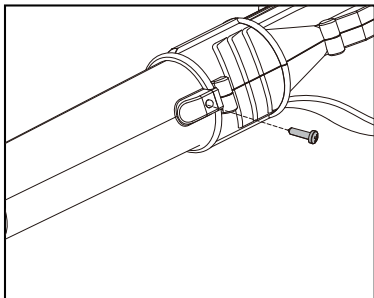
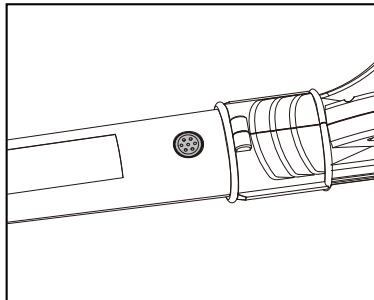
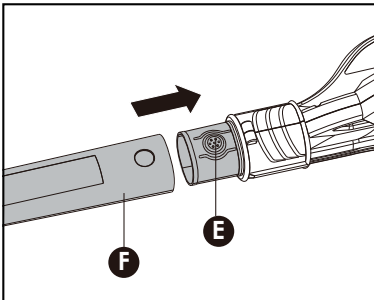
1. Before assembling the long blower tube (**F**), ensure the On/Off switch (**A**) is in "O" off position.

2. Fit the long blower tube (**F**) to the motor housing as shown in the picture below.

Check the long blower tube (**F**) is firmly secured. Secure the long blower tube (**F**) to the blower port with the screw provided.

How To Remove

NOTE: Before disassembling the blower tube, ensure the on/off switch is in the "O" (Off) position. Begin by loosening the screw, then press the tube release button (E) to detach the tube. Avoid using force or tools to separate the tube.



Assembly

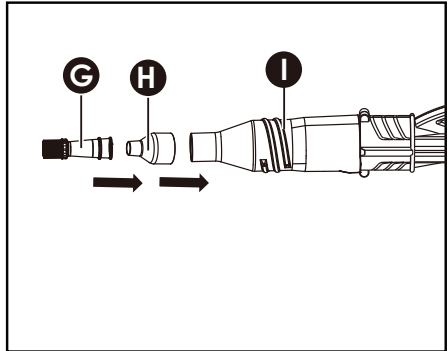
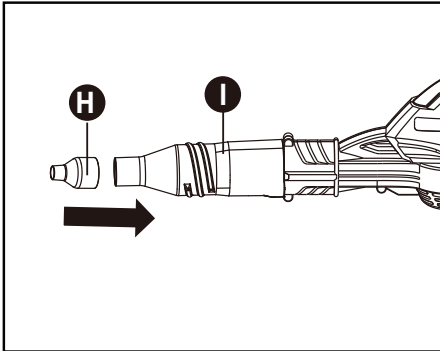
▲ NOTE: Long blower tube (F) and short blower tube (I) are assembled and removed in the same way.

- Assembling and removing the air dusting tube

To assemble the air dusting tube (H), slide it onto the short blower tube (I). To remove the air dusting tube (H), just pull it off from the short blower tube (I).

- Assembling and removing the air detail brush

To assemble the air detail brush (G), slide it onto the air dusting tube (H). To remove the air detail brush (G), just pull it off from the air dusting tube (H).



STEP 2 : Battery Charging and Installation

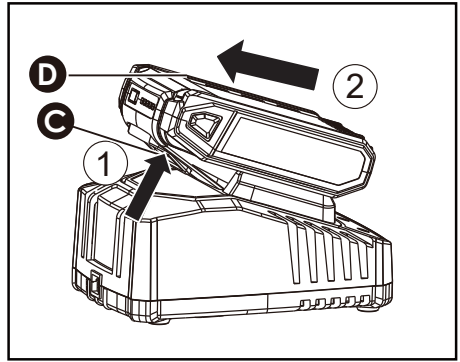
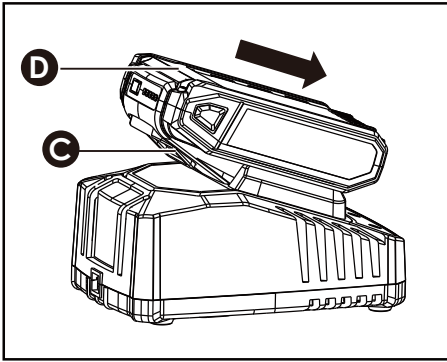
1. Charge the Battery Pack

- Only use the charger specifically designed for this equipment.
- If the battery pack is very hot, remove it from the charger and allow it to cool before attempting to recharge.
- Fully charge the battery before storing it. For prolonged periods of inactivity, recharge the battery every three months to maintain its condition.

2. To Remove or Install the Battery Pack

Firmly press the battery pack release button (C), then slide the battery pack (D) out of the tool. After recharging, slide the battery pack back into the tool's battery port. A gentle push with light pressure is all that is needed to secure it in place.

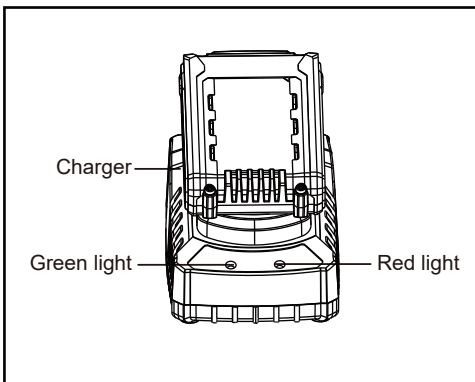
Assembly



3. Charging procedure

1. Plug the charger into an appropriate outlet. The green light will illuminate.
2. Firmly slide the battery pack into the charger, ensuring it is in the correct charging position. The green light will turn off, and the red light will illuminate to indicate the charging process has started.
3. Once charging is complete, the red light will turn off, and the green light will illuminate.
4. After the battery is fully charged, unplug the charger and remove the battery pack. NOTE: If the battery pack becomes locked in the charger, press the battery pack release button to remove it.

⚠ WARNING: If the battery charge depletes after continuous use or exposure to direct sunlight or heat, allow the tool sufficient time to cool down before recharging to ensure a full charge.







Assembly

4. Charging indicator

The charger is designed to detect potential issues with battery packs, indicated by the status of the indicator lights (refer to the table below). If an issue occurs, insert a different battery pack to verify if the charger is functioning properly.

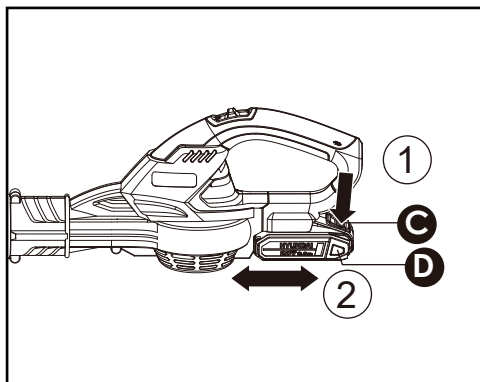
If the new battery charges successfully, the original battery pack is defective and should be returned to a service centre or a recycling facility.

If the new battery pack displays the same issue as the original, have the charger tested at an authorized service centre.

Light	ON/OFF flash	Status
Red on ● 	————	Charging
Red flash ✖ 	- - - - -	Defective battery
Green on ● 	————	Fully charged
Green flash 	- - - - -	Battery too hot/cold

5. To Remove or Install the Battery Pack into the Tool

Firmly press the battery pack release button **(C)** and then slide the battery pack out of the tool. Insert the fully charged battery pack **(D)** into the tool, applying enough force until it clicks securely into place.



Checking the power condition of battery pack

The battery level can be checked by pressing the button next to the indicator lights.

Operation

On/Off switch

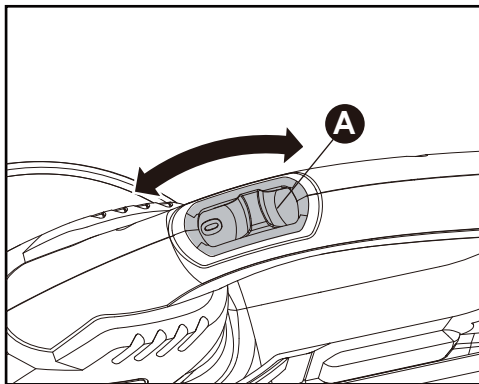
! WARNING: The tool may continue running for a few seconds after being switched off. Allow the motor to come to a complete stop before setting the tool down.

Switching on the device

Move the on/off switch **(A)** to the “I” On position.

Switching off the device

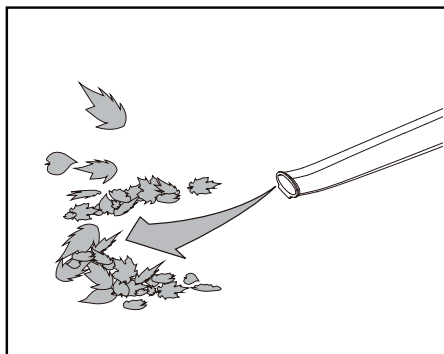
Move the on/off switch **(A)** to the “O” Off position.



Using the blower

The blower is intended for residential use only. It is designed for outdoor use to clear debris from hard surfaces. This blower is not suitable for removing leaves from large grassy areas or for moving wet, heavy debris.

Operation



User tips

- Hold the blower tube approximately 180 mm above the ground while operating the tool.
- Use a sweeping motion from side to side, advancing slowly and keeping the accumulated debris or leaves in front of you.
- Once the debris or leaves are gathered into a pile, it will be easy to dispose of it.

⚠ CAUTION:

- Do not blow hard objects such as nails, bolts, or rocks.
- Avoid operating the blower near bystanders or pets.
- Exercise extra caution when cleaning debris from stairs or other confined areas.
- Always wear safety goggles or appropriate eye protection, long pants, and sturdy shoes.

Using the short blower tube

The short blower tube is used for cleaning areas where the long blower tube cannot be used, and it also serves as an adapter for various accessories.

Using the air dusting tube

The air dusting tube is used for cleaning areas with restricted access and smaller objects.

Using the air detail brush

The air detail brush is used for cleaning smaller areas, such as car interiors and keyboards.

Operation

Cleaning

Do not use cleaning agents or solvents, as they may cause irreparable damage to the device.

- Keep the ventilation slots, motor housing, and handles clean by using a damp cloth or a brush.
- Avoid using cleaning agents on the plastic parts of the tool. A mild detergent on a damp cloth is recommended.
- Never allow water to come into contact with the tool.

Maintenance

1. Always remove the battery pack before performing any maintenance on the device.
2. Store the tool, instruction manual, and accessories in a secure, dry location to ensure the information is always accessible.
3. Keep the tool's air vents clean and free from blockages at all times.
4. Regularly remove dust and dirt, using a rag or brush for cleaning.
5. Never use harsh chemicals to clean plastic parts.

For Battery Tools

The ambient temperature range for tool and battery use and storage is 32°F - 113°F (0°C-45°C).

The recommended ambient temperature range for the charging system during charging is 32°F - 104°F (0°C-40°C).

Storage & Transport

- Clean the equipment before storing it.
- Store the device in a dry, frost-free, and dust-protected location, out of reach of children.
- For long-term storage, keep the battery at a partially charged state (40–60%). Check the battery's charge level every 2 to 3 months and recharge if necessary.
- To maintain the battery's charge, avoid storing the device in extreme temperatures.
- Store the equipment in a temperature range of 50°F (10°C) to 77°F (25°C) to prevent power loss due to extreme cold or heat.

Maintenance & Care

Troubleshooting

⚠ NOTE: All corrective actions should be carried out by suitably qualified person/s.

Problem	Possible cause	Fault correction
The tool does not work	Low battery capacity	Charging the battery
	The battery pack is not fully inserted	Insert the battery pack to the end
The battery pack cannot be removed	The battery pack release button is not pressed	Press the battery pack release button

Technical Data

Specification

Rated voltage:	20 V \equiv Max.
No load speed:	12500 /min
Blow speed	200 km/h
Battery capacity (BI20-2):	2.0 Ah
Charger input (C20-2):	100-240V~50/60Hz, 55W
Charger output (C20-2):	20V \equiv 2.0A
Charging time:	1Hour
Charger protection class:	□ /II
Machine weight (with battery):	1.61 kg
A weighted sound pressure	$L_{pA} = 79 \text{ dB(A)}$, $K_{pA} = 3 \text{ dB(A)}$
A weighted sound power	$L_{wA} = 91 \text{ dB(A)}$, $K_{wA} = 3 \text{ dB(A)}$
Vibration total values (triax vector sum) determined according to EN 50636-2-100:	
Vibration emission value	$a_h \leq 2.5 \text{ m/s}^2$, $K = 1.5 \text{ m/s}^2$

Recycling & Disposal

Recycling & Disposal

We do not offer a takeback scheme for the recovery of Waste Electrical Electronic Equipment (WEEE) & Batteries. Instead the responsibility to dispose of WEEE and/or Batteries is passed onto you by us.

So when it becomes necessary to dispose of your machine you must take it to your local Civic Amenity Site. For further information please contact your local Authority for disposal advice.

You **MUST** make sure that all unused oil and fuel is disposed of correctly either beforehand or at your local Civic Amenity Site.

- Under NO circumstances must any fuel or oil be put down any drains.
- Certain products contain WEEE waste which should not be disposed of in your domestic waste.
- You **MUST** recycle WEEE in accordance with your local authority or recycling centre.
- Certain products contain batteries which should not be disposed of in your domestic waste.
- You **MUST** recycle batteries in accordance with your local authority or recycling centre.
- Unwanted packaging and materials should be stored and taken to a recycling centre so it can be disposed of in a manner which is compatible with the environment.

We are a Member of the VALPAK National Compliance Scheme and our registration number is RM08660. For further information about disposal please contact your Local Authority.

You can also get more advice and guidance about recycling at the following website <http://www.recycle-more.co.uk>

Should you pass this product on to another user either sold or loaned, you **MUST** pass on this user manual. This will make sure that all other users can use and maintain this machine safely.

Recycling & Disposal

Environmental Protection

1. Environmental protection should be a priority of considerable importance when using the machine, for the benefit of both social coexistence and the environment in which we live. Try not to cause any disturbance to the surrounding area.
2. You must comply with local regulations and provisions for the disposal of packaging, oils, fuel, filters, damaged parts or any elements which have a strong impact on the environment. This waste must not be disposed of as normal waste. It needs to be separated and taken to specified waste disposal centres where the material will be recycled.
3. You must comply with local regulations for the disposal of waste materials after mowing.
4. When disposing, do not pollute the environment with the machine, but hand it over to a disposal centre, in accordance with the local laws in force.

EU Declaration Of Conformity

Importer and Authorised Representative

Genpower Ltd
Isaac Way, Pembroke Dock, SA72 4RW

Country of Origin: China
Description: 20V Blower
SKU Code: HY20CB
Date of Issue: 20/12/2024

Regulations and Directives of Compliance

2006/42/EC, 2014/30/EU, 2014/35/EU, 2011/65/EU&(EU)2015/863,
2000/14/EC amended by 2005/88/EC, (EU)2023/1542

The notified body involved

2000/14/EC amended by 2005/88/EC:
- Conformity Assessment Procedure as per **Annex V**
- Measured Sound Power Level **91 dB(A)**
- Declared Guaranteed Sound Power Level **94 dB(A)**

Statement of Declaration

We the importer and authorised representative of the product described confirm conformity within the provisions of applicable regulations and directives listed within this document.

Standards conform to

EN 60335-1, EN 50636-2-100, EN 62233, EN ISO 3744, EN IEC 55014-1, EN IEC 55014-2, EN 60335-2-29, EN IEC 61000-3-2, EN 61000-3-3, EN IEC 63000, EN 62133-2

Signed on Behalf of Genpower Ltd

Place of Issue: Genpower Ltd

Signatory Name: Roland Llewellyn

Position: Managing Director

R J Llewellyn



Notes

This image shows a single sheet of white paper with horizontal ruling lines. The lines are evenly spaced and run across the width of the page. There are no margins, text, or other markings on the paper.

Useful Information

Check Out Our YouTube Channel

Our videos on YouTube include:

Unboxing

Assembly of your machine

How to service your machine

Products in use

'How To' videos

Product features

Go to YouTube and search 'Hyundai Power Products'.

Warranty

Proof of purchase will be required before you make a warranty claim. Full warranty terms and conditions can be found on the HYUNDAI POWER PRODUCTS website:

www.hyundaipowerproducts.co.uk

Manual Updates

Our manuals are constantly being reviewed and updated. Should you find an error, omission or something unclear, please contact us for assistance. We reserve the right to make any modifications without prior notice whenever necessary.

Our latest manuals are also placed online. All our manuals can be downloaded at: www.hyundaipowerproducts.co.uk

Returning Your Product

If you are returning your product, please contact the dealer for their returns policy.

Leaving A Review

We work very hard to give all of our customers the best possible service. If you have any problems, before leaving negative feedback, please contact us to give us a chance to resolve the issue. We would be delighted if you left us positive feedback! To leave a review, please go to: uk.trustpilot.com/review/hyundaipowerequipment.co.uk

Ordering Spare Parts

You can find the spare part you are looking for at power-spareparts.co.uk

www.hyundaipowerproducts.co.uk

Product Record

Information

As soon as you have purchased the machine, we recommend that you fill out the following. If you need to contact an authorised dealer or customer service for information on servicing, you may need to provide the following information.

Date Of Purchase:.....

Dealer Name:.....

Dealer Phone:.....

Model Number:.....

Serial / Batch Number:.....

Contact Us

Need Help? Talk To Our Experts

Our friendly aftersales team will be more than happy to help you.



Phone

Call our team on 01 646 687 880



Email

aftersales@genpower.co.uk



Online Live Chat

Go to www.hyundaipowerproducts.co.uk



Post

Genpower Ltd, Isaac Way, Pembroke Dock, Pembrokeshire, SA72 4RW.



Hyundai Support Website

Go to hyundaisupport.co.uk

HYUNDAI
POWER PRODUCTS



For Inquiries, Please Contact:
GENPOWER LTD
Isaac Way, London Road,
Pembroke Dock, UK, SA72 4RW.
T: +44 (0) 1646 687 880
E: info@hyundaipowerproducts.co.uk
www.hyundaipowerproducts.co.uk

Imported / Distributed by Genpower Ltd
for the United Kingdom & Ireland

Licensed by Hyundai Corporation
Holdings, Korea