



Operator's Manual

user manual, maintenance instructions and spare parts
650DX / 750DX Premium+ Hedgetrimmer

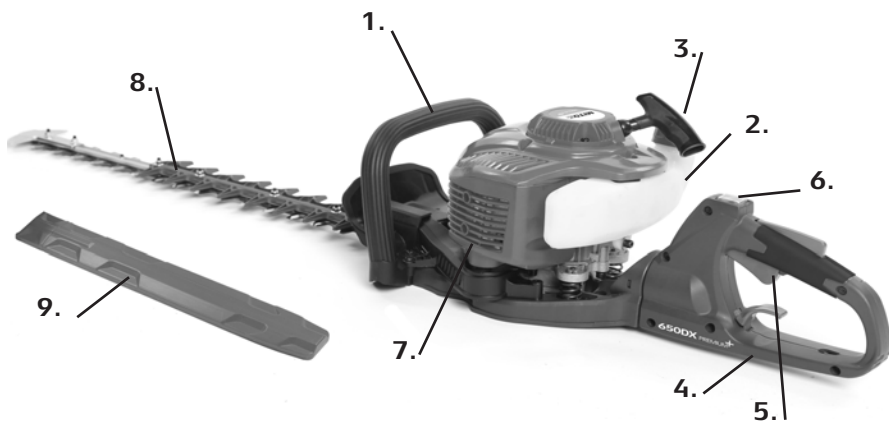


Read this manual carefully before operating the machine

Original Instructions Version June 16

650DX+/750DX+_080616

Component Location



- 1. Front handle
- 2. Fuel tank
- 3. Starter
- 4. Rear handle
- 5. Throttle lever

- 6. Ignition switch
- 7. Muffler
- 8. Blade
- 9. Blade guard

PRODUCT DESCRIPTION

This Hedgetrimmer is a 2 stroke fast running power tool and is designed to be used in a domestic application for trimming new growth on hedges.

Warnings in the Manual



This mark indicates instructions which must be followed in order to prevent accidents which could lead to serious bodily injury or death.



This mark indicates instructions which must be followed or it leads to mechanical failure, breakdown, or damage.



This mark indicates hints or useful directions in the use of the product.

Safety Symbols



(1) Read operator's instruction book before operating this machine.



(2) Appropriate ear, eye, and head protection must be worn.



(3) Handling this machine improperly could result in accidents causing serious injury or death. Read this manual carefully and practice using the hedgetrimmer until you are fully acquainted with all operations and have learned to use it correctly.



(4) This is extremely sharp and can easily cause cuts.



(5) Directive 2000-14/CE. Guaranteed noise levels.



(6) Danger: risk of exhaust fumes intoxication.

Taking Care of Warning Labels

Always keep warning labels clean and free of scratches, which might make them illegible or difficult to read. If the warning labels provided with your hedgetrimmer become damaged, peel off, or otherwise become illegible or difficult to read, order new labels from the authorised servicing dealer and replace the damaged labels. When applying new labels, first wipe away any dirt and dry the surface before applying the new label in the same place as the original label.

Explanation of Symbols on the Machine

For safe operation and maintenance, symbols are carved in relief on the machine:•



FUEL TANK

Fuel tank 2 stroke mix
Position: Fuel cap



CHOKE OPERATION

Starting mode when the engine is hot (choke off).
Position: Air cleaner cover.



Starting mode when the engine is cold (choke on).
Position: Air cleaner cover.

Safety Precautions

Introduction

Read this Owner/Operator Manual carefully. Be sure you understand how to operate this hedgetrimmer properly before you use it. Failure to do so could result in serious injury.

Keep this manual handy so that you may refer to it later whenever any questions arise. Also note that you are able to contact the dealer from whom you purchased the product for assistance. Always include this manual when selling, lending, or otherwise transferring the ownership of this product.

This product has been designed to be used as a hedge trimmer power tool as described previously and it should never be used for any other purpose; doing so could result in unforeseen accidents and injuries occurring. Only approved Mitox accessories should be used with this product.

This hedgetrimmer is equipped with extremely sharp blades, always wear sturdy gloves when handling the blades and fit the safety guards when not in use.

When using this hedgetrimmer for the first time, take the hedge trimmer to a wide, clear, open space, start the engine, and practice handling the hedge trimmer until you are sure that you will be able to handle it properly in actual operation.

You should never use this hedgetrimmer when under the influence of alcohol, suffering from exhaustion or lack of sleep, suffering from drowsiness as a result of having taken medicine, or at any other time when your judgment might be impaired or that you might not be able to operate the hedgetrimmer properly and in a safe manner.

Never allow children or anyone unable to fully understand the directions given in this manual to use this hedgetrimmer.

When planning your work schedule, allow plenty of time to perform the work and allow plenty of time for rest. Limit the amount of time you continuously use the hedgetrimmer to 30~40 minutes per session, and take 10~20 minutes of rest between work sessions. Also try to keep the total amount of work performed in a single day to 2 hours.

Avoid running the engine indoors, the exhaust gases contain harmful carbon monoxide.

Never use the Hedgetrimmer in conditions as described below:

When the ground is slippery or when other conditions exist which might make it difficult to maintain a steady posture while using the hedgetrimmer.

At night, at times of heavy fog, or at any other times when your field of vision is limited and it would be difficult to gain a clear view of the area where the hedgetrimmer is to be used.

In heavy rain, during lightning storms, at times of strong or gale-force winds, or at any other times when weather conditions might make it unsafe to use this product.

Lack of sleep, tiredness, or physical exhaustion results in lower attention spans, and this in turn can lead to accidents and injury.

Work Clothing and Safety Equipment

When using the product, you should wear proper clothing and protective equipment.

- Helmet
- Protection goggles or face protector
- Ear protectors
- Thick work gloves
- Non-slip sole work boots

Safety and Operation



This hedge trimmer is equipped with very sharp blades, and when used incorrectly the blades can be extremely dangerous.

Improper handling can cause accidents which may in turn lead to serious injury or death. For this reason, you should always be careful to adhere to the following instructions when using your hedgetrimmer. Never hold the hedge trimmer in a way in which the blades are pointing towards someone else.

Never allow the blades to come into contact with your body.

Always turn off the engine before adjusting the hedgetrimmer, removing branches which have become stuck in the blades, or at any other time when coming into close proximity with the blades.

Always wear thick work gloves when adjusting the hedgetrimmer.

Always place the blade cover provided over the blades when not in use.

Falling branches may fall onto the operator's body or head, resulting in injuries, scratches and cuts, and for this reason you should always wear a helmet when operating the hedgetrimmer.

Safe Handling of Fuel



The engine of the hedge trimmer is designed to run on a two-stroke oil/fuel mixture. This fuel is highly flammable, never store cans of fuel or refill the fuel tank in any place where there is a source of heat or fire which might ignite the fuel.

Do not smoke whilst operating the hedge trimmer or refilling, keep lit cigarettes away from the hedge trimmer at all times.

When refilling the fuel tank always stop the engine first and carefully make sure that there are no sparks or open flames anywhere nearby before refuelling.

If any fuel spillage occurs during refuelling, use a dry rag to wipe any fuel which has been spilled onto the hedgetrimmer before starting the engine.

After refuelling, screw the fuel cap back tightly onto the fuel tank and carry the hedgetrimmer to a spot 5 metres or more away from where it was refuelled before starting the engine.

Before Operating the Hedgetrimmer

Before beginning work, carefully check the work area and remove any obstacles.

Within a perimeter of 15 metres of the work area should be considered a hazardous area into which no-one should enter while the hedgetrimmer is being used, and when necessary this area should be marked with a warning rope, warning signs, or other forms of warning.

When work is to be performed simultaneously by two or more operators, care should also be taken to constantly look around to check the presence and locations of other operators within the work area to maintain a safe distance between each operator.

Before beginning work, each component of the hedgetrimmer should be checked to make sure that it is in proper working order, make sure that there are no loose screws or bolts, fuel leaks, ruptures, dents, or any other problems which might interfere with safe operation. Be especially careful to check that there is no damage to the blades.

Keep all parts of your body away from the hedgetrimmer blades when the engine is running.

Before Starting the Engine

Carefully check the work area to make sure that no obstacles exist within a perimeter of 15 metres around the hedge trimmer before starting the engine.

To start the engine, place the hedgetrimmer onto the ground in a flat clear area and hold it firmly in place to ensure that neither the blades nor the throttle come into contact with any obstacles when the engine starts.

After starting the engine, make sure that the blades stop moving when the throttle trigger is released (idle). If the blades continue to move when the engine is at idle, adjust the idle screw on the carburettor to a point where the blades stop moving, if this cannot be achieved, take the hedgetrimmer to your authorised servicing dealer for adjustment.

Avoid Noise Problems

Check and follow the local regulations for sound levels and hours of operation for garden machinery.

In general, operate hedgetrimmers between 8 am and 5 pm on week days and 9 am to 5 pm at weekends. Avoid using the hedge trimmer late at night and/or early in the morning.

Safety when using the Hedgetrimmer

When using the hedgetrimmer, grip the handles firmly with both hands, place your feet slightly apart so your weight is distributed evenly across both legs, and always maintain a steady even posture while working. Do not use on ladders or if the ground surface is slippery or uneven. Never attempt to cut directly overhead or with one hand.

- Maintain full engine speed when cutting.
- Never allow other persons to come within the work area as doing so might expose them to danger.
- Keep work area clear of all persons, particularly small children and pets. Injury may result from flying debris.
- If a branch or other object gets caught in the hedgetrimmer during operation, always stop the engine before removing the object.
- To protect yourself against injury from falling branches, wear the required safety equipment.
- Never touch the spark plug or plug HT cable while the engine is in operation, doing so may result in an electrical shock.
- Never touch the exhaust, spark plug, or any metallic parts while the engine is in operation or immediately after shutting down the engine. These parts reach high temperatures during operation and doing so could result in serious burns.
- When you finish cutting in one location and wish to continue work in another area, stop the engine, place the protective cover over the blades, and turn the hedge trimmer so that the blade faces behind your body before carrying it to the new location.
- Always remove fuel from the fuel tank before transportation to prevent fuel spillage.
- Never leave the hedgetrimmer exposed to direct sunlight as this can heat the fuel tank and may cause a discharge of fuel, and flood the engine.



Two-Stroke Fuel



Fuel is very flammable. Do not smoke or bring any flame or sparks near fuel. Always stop the engine and allow it cool before refuelling. Refuel outdoors on bare ground, restart the engine at least 5m away from the refuelling stop.

The engine is lubricated by oil mixed into petrol. Prepare a mixture of unleaded petrol and semi-synthetic two-stroke oil that meets the specifications of: API TC, ISO-L-EGC, JASO FC (Low Smoke) oil.

Recommended mixing ratio is 40:1.

FUEL WITH NO OIL (RAW PETROL) will cause severe damage to the engine which is not covered by the manufacturer's warranty.

Use fresh, unleaded petrol (95 RON) and semi-synthetic oil specially made for high performance two-stroke engines. Mix in a ratio of 40 parts petrol to 1 part of oil.

By using two-stroke oil specially made for two-stroke engines you will reduce the formation of ash and carbon deposits on the spark plug, piston, exhaust muffler and cylinder as well as reducing emissions of harmful exhaust gases.

Oil FOR 4-CYCLE ENGINES should not be used as two stroke lubrication oil as it can cause fouling of the spark plug, exhaust port blocking, piston ring sticking and other internal engine damage.

Fuel Storage

Mixed two-stroke fuel which has been left unused for a period of one month or more may damage the carburettor and result in the engine failing to start or operate correctly.

When storing the hedge trimmer for a period of more than one month, empty the fuel tank, and run the engine to empty the carburettor of fuel.

Two stroke fuel can cause deterioration of rubber and/or plastic components during prolonged storage.

It is important to only use good quality, fresh fuel mix.

Fuelling

Shake the fuel container to thoroughly mix the two-stroke oil and petrol.

Clean dirt from around the fuel cap before removing.

Pour two-stroke fuel into the fuel tank with a filtered funnel, up to 80% of the fuel tank's capacity.

Replace the fuel cap and tighten securely. Spilled fuel must be wiped away from the hedge trimmer before starting the engine.

Move at least 5m away from the refuelling area before restarting the engine.



When refilling the tank, always turn off the engine and allow it to cool down. Take a careful look around to make sure that there are no sparks or open flames anywhere nearby before refuelling.

Operation



Keep clear of the blades as they may start moving when engine starts.

Starting the Engine

CAUTION do not pull the starter cord all the way out and do not let go of the starter handle when the cord is extended, this can damage the starter mechanism.

Cold Engine Starting

Rest the unit on a flat, firm surface. Keep the blades off the ground and clear of surrounding objects as they may start moving upon starting the engine.

Fig 1

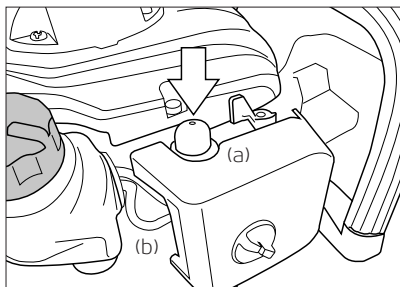


Fig 1 - Push the air purge bulb (a) until fuel is visible in the clear return fuel line (b).

Fig 2

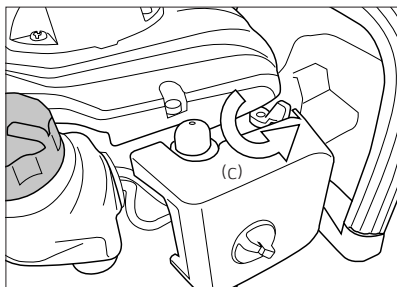


Fig 2 - Move the choke lever to the on position (c).

Fig 3

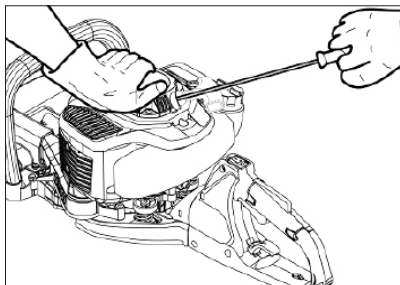


Fig 3 - While holding the unit firmly, pull out the starter rope firmly until engine fires (indicated by a cough from the engine).

Fig 4

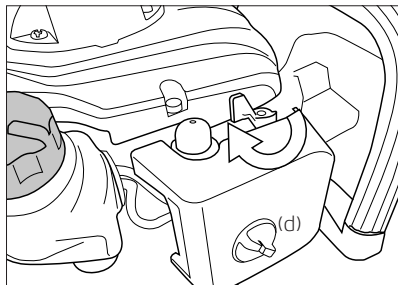


Fig 4 - Move the choke lever to the off position (d).
Pull the starter rope until the engine starts.

After the engine has started, briefly apply the throttle to set the engine to idle. Allow the engine to warm up before use. When cutting, always use the hedgetrimmer on full throttle.

Hot Engine Starting

Fig 3 - Pull the starter rope until the engine starts.

If the engine does not start after 5 pulls, use the cold start procedure.



Overchoking

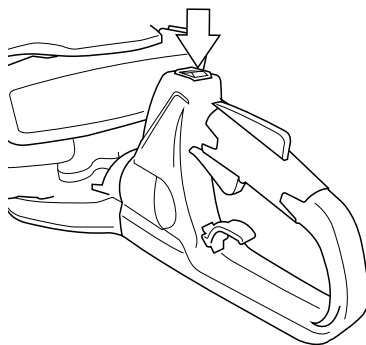
Should the engine become flooded due to overchoking, turn the ignition switch off, unscrew the spark plug, wipe it dry or replace, pull the recoil starter several times without the spark plug in place and with choke in the off position. This will help clean and ventilate the combustion chamber.

Stopping the Engine

Set the engine to idling by releasing the throttle lever.

Set the ignition switch to the off position "O" (STOP). After the engine has stopped, wait at least 30 seconds before attempting to restart.

If the engine fails to stop, set the choke lever to the on position to stall the engine; do not use the machine until the ignition switch is repaired.



Running In

During the first ten hours of work, avoid running the engine at maximum speed for a prolonged period until all the components have bedded in, after the engine has been run in, it will reach its maximum power.

IMPORTANT

After every use, check that all nuts bolts and screws are securely fastened and tighten if necessary.

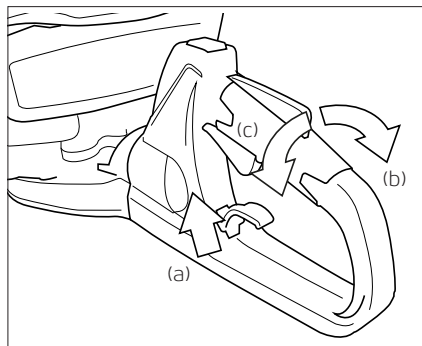
Rear Handle

To reduce fatigue when trimming hedges, the handle can be swivelled 90° to the left or right.



NOTE

Do not use the throttle during this operation!



Proceed as follows:

Free the rear handle by pressing the locking lever (a).

Turn the rear handle (b) until the locking lever clicks into place.

When the handle is locked in its new position you can apply the throttle (c).

Transportation

Never transport the hedgetrimmer with the engine running. An engine that is running could be accidentally accelerated causing the blade to engage.

Make sure the blade safety guards are in place when transporting the hedge trimmer.

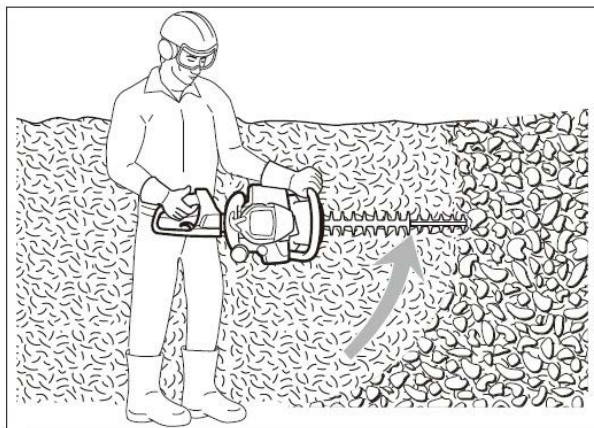
When carrying by hand, the cutting head should be pointing backwards.

Ensure the Hedgetrimmer is secure when transporting in a vehicle and the tank is drained of fuel.

Hedge Trimming Techniques

Trim the sides of a hedge first, and then the top.

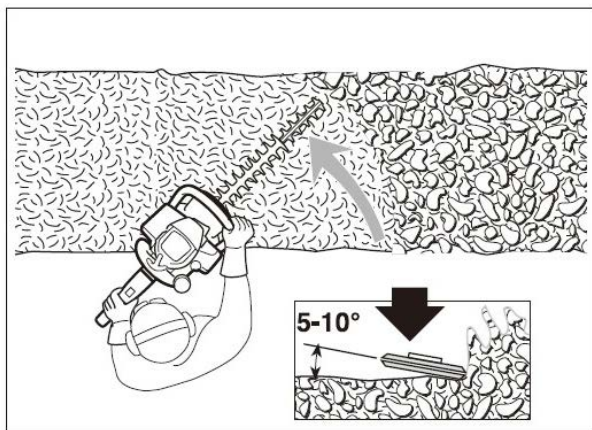
VERTICAL CUT:



Use an arcing cut from the bottom upwards, then downwards to use both sides of the blades.

HORIZONTAL CUT:

In order to get the best cutting results, slightly tilt the blade 5 to 10° towards the cutting direction.



Cut slowly, especially when cutting thick hedges.

The hedgetrimmer must only be used to trim hedges or small bushes. It is not to cut other types of material. Do not use the hedgetrimmer as a lever to lift, move or break objects. Avoid cutting thick branches, which will damage the blades and shorten the life of the drive system. Always keep your body to the carburettor side of your hedgetrimmer, never on the muffler side.

Maintenance

IMPORTANT

After every use, check that all nuts, bolts and screws are securely fastened and tighten if necessary.

In the event of an accident, breakdown or blockage, ensure the engine is turned off before any work is carried out to rectify this.

Make sure the engine has stopped and is cool before performing any service to the machine. Contact with a moving cutting head or hot muffler may result in a personal injury.

Always wear heavy-duty gloves when handling the blades.

Blades

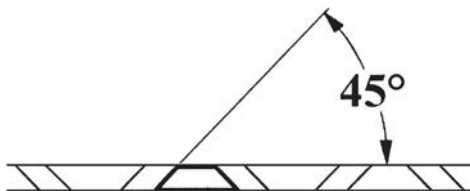
Check blades for damage before using the hedgetrimmer.

Clean any residue from the blades using a cleaning agent.

Lubricate the blades with spray oil before and after use.

Sharpening

Always keep the file at an angle of 45° to the blade, and always file in the direction of the cutting edge.



Note: Files cut only in one direction; lift the file from the blade when returning to start a new pass. Remove as little material as possible.

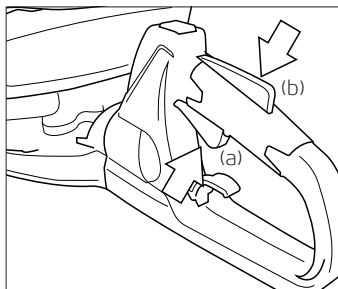
Do not try to sharpen a damaged blade; change it or take it to a service dealer.

Safety Lock

The safety lock is to prevent the throttle lever from accidentally being engaged.

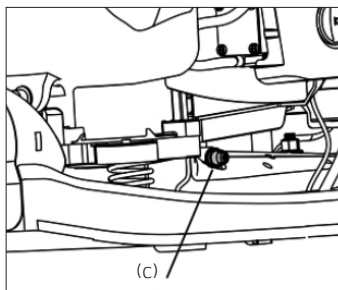
The throttle lever (a) can only be operated, if the safety lock (b) is held down.

Check if the safety lock and throttle levers return to their original position and the engine returns to idling when you release your hand from the handle.



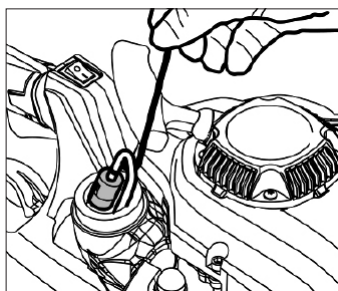
Gearbox

Every 15 hours of operation apply 3 pumps of grease using a grease gun and a lithium multi purpose grease, do not force grease into the gearbox (c) as too much pressure will damage the seals.



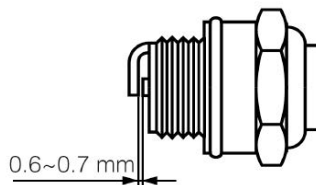
Fuel Filter

Every 15 hours of operation using a wire hook, take the fuel filter from the fuel tank and clean or replace with a new fuel filter.



Spark Plug

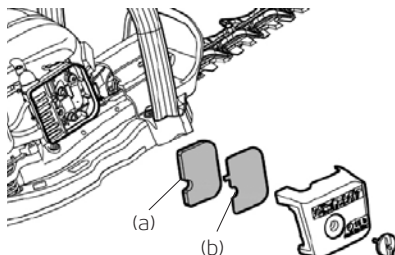
Poor starting or misfiring is often caused by a fouled or defective spark plug, clean and reset the gap to 0.65 mm, or replace the spark plug with NGK: BPMR7A as necessary.



Air Filter

Before using the hedgetrimmer, check the foam air filter (a) and pre-filter (b). Being clogged, will reduce the engine performance.

Clean the filter element in warm, soapy water, dry completely before installing. If the element is broken or shrunk, replace with a new one.



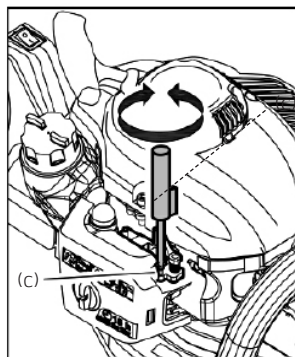
Carburettor

The carburettor mixture setting has been set at the factory and will not need adjusting.

Adjusting the idle speed, if adjustment is necessary turn the T screw (c) clockwise until the blades start to move, then turn the screw T anticlockwise until the blades stop.



If the idle speed cannot be adjusted to stop the blades moving at idle, contact your dealer for repair before use.



Storage

Oil the blades to prevent rust.

Remove the spark plug, pour a small amount of 2-stroke oil into the cylinder. Rotate the crankshaft several times using the starting rope in order to distribute the oil. Put the spark plug back in.

Remove the fuel from the machine.

Troubleshooting

Engine will not start, power loss:

- Check that the fuel tank is not empty. Fill with mixed fuel.
- The fuel does not reach the carburettor. Change the fuel filter in the fuel tank.
- There is water in the fuel. Drain and clean the fuel system.
- The air filter is dirty. Clean or replace the air filter.
- There are carbon deposits in the exhaust muffler restricting the engine. Clean or change the muffler.
- Spark plug is worn. Replace spark plug.

Service Schedule

Component	Procedure	Before Use	Every 25 Hours	Every 50 Hours	Every 100 Hours	Note
Fuel Leaks / Fuel Spillage	Clean Up	•				
Fuel Tank / Fuel Filter	Inspect / Clean		•			Replace if Neccessary
Idle Adjusting Screw	See Adjusting Carburettor	•				Adjust if Neccessary
Spark Plug	Clean and Readjust Plug Gap			•		Gap 0.025in (0.6-0.7mm) Replace if Neccessary
Cylinder Fins / Intake Air Cooling Vent	Clean		•			
Muffler / Spurt Arrester / Cylinder Exhaust Port	Clean				•	
Throttle Lever / Ignition Switch	Check Operation	•				
Air Filter	Clean	•				
Screws / Nuts / Bolts	Tighten/Replace					Except Adjusting Screws
Vibration Elements	Check for Damage	•			•	Replace as Necessary
Blades	Clean and Oil	•				Check for Damage & Replace as Necessary

Specifications

Model..... 650DX+ / 750DX+
 Type Double / Single Sided Hedgetrimmer

Blade length (from the tip of Gear Case)

650DX+ 600 mm
 750DX+ 750 mm

Effective cutting length

650DX+ 550 mm
 750DX+ 690 mm

Engine

Model 1E33F
 Displacement 22.2 cm³
 Carburettor Diaphragm type
 Ignition system I.C. controlled flywheel magneto
 Spark plug CDK CMR6A / NGK CMR6A
 Fuel mixture (Gasoline 40 : Oil 1) (using JASO FC or ISO EGC grade oil)
 Fuel tank capacity 0.4 L
 Starter Recoil starter
 Clutch Centrifugal type
 Reduction ratio 5:11

Dry weight

650DX+ 5.2 Kg
 750DX+ 5.4 Kg
 Sound pressure level at operation position (EN ISO 10517:2009+A1) LpA: 94.2 dB(A)
 Uncertainty of stated value (2006/42EC) KpA: 3.0 dB(A)
 Sound power level (EN ISO 10517:2009+A1) LWAd: 107.0 dB(A)

Total equivalent vibration value:

Front handle 2.12 m/s²
 Rear handle 2.91 m/s²
 Uncertainty of stated value (2006/42EC): 1.5 m/s²
 Specifications are subject to change without notice.

EC Declaration of Conformity

We Mitox (Rochford Garden Machinery Ltd) - BA9 9RS (importer) declare that the product(s):

Designation: Petrol Powered Hedgetrimmer
Model(s): 650DX Premium + / 750DX Premium +
Type/Serial No: As per rating label on machine

Complies with the following directive(s):

2006/42/EC Machinery Directive
2004/108/EC EMC Directive
97/68/EC Directive as last amended by 2012/26/EU NRMM
2000/14/EC and 2005/88/EC Noise Directive for outdoor equipment use

The conformity assessment procedure followed was in accordance with:

EN ISO 10517:2009 + A1:2013
EN ISO 14982:2009

Notified Body:

Intertek Testing Services

Address:

Building No. 86, 1198 Qinzhou Road (North) Shanghai 200233, China

Measured Sound Power Level: 104.3 dB (A)
Guaranteed Sound Power Level: 107 dB (A)

Authorised Signatory and Technical File Holder

Date: 06/06/2016

Signature:



Name: Stewart Anderson

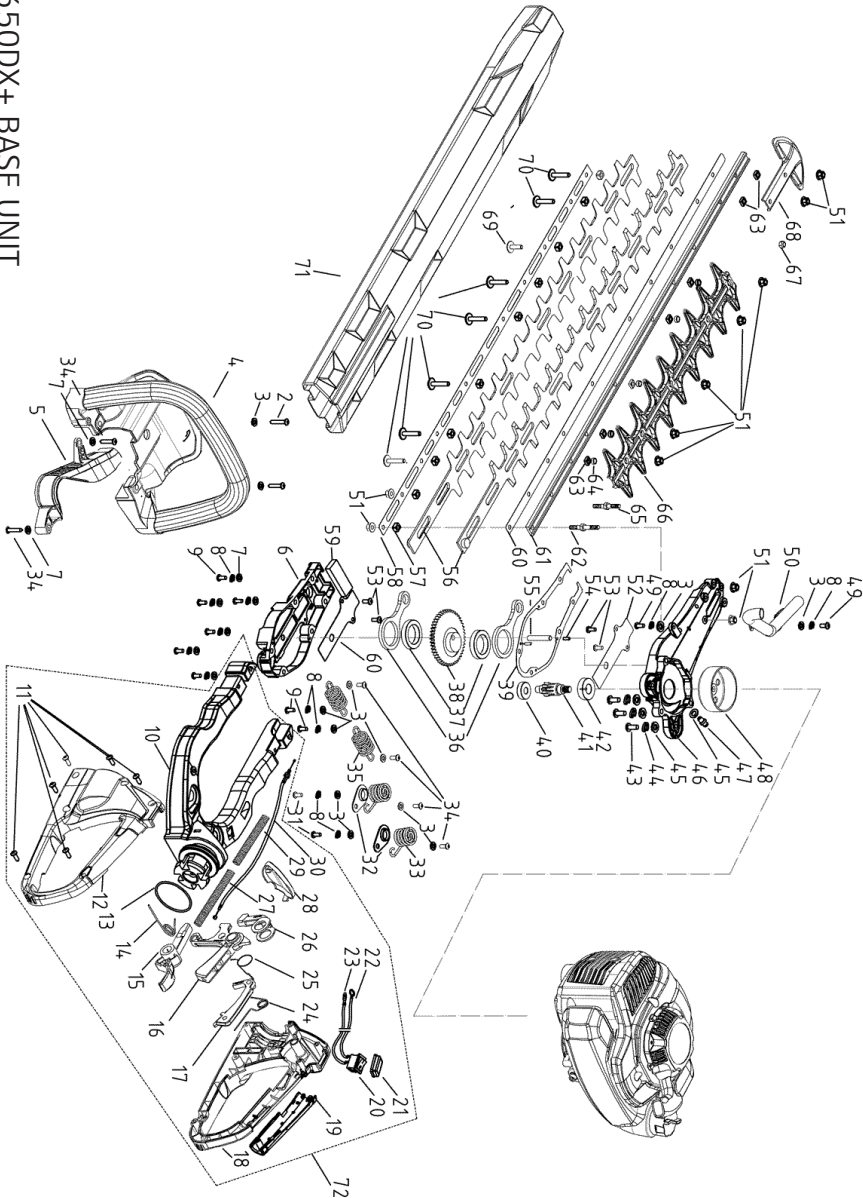
Position: Managing Director

Company: Mitox (Rochford Garden Machinery Ltd)

Address: Wincanton Business Park
Wincanton
Somerset
BA9 9RS



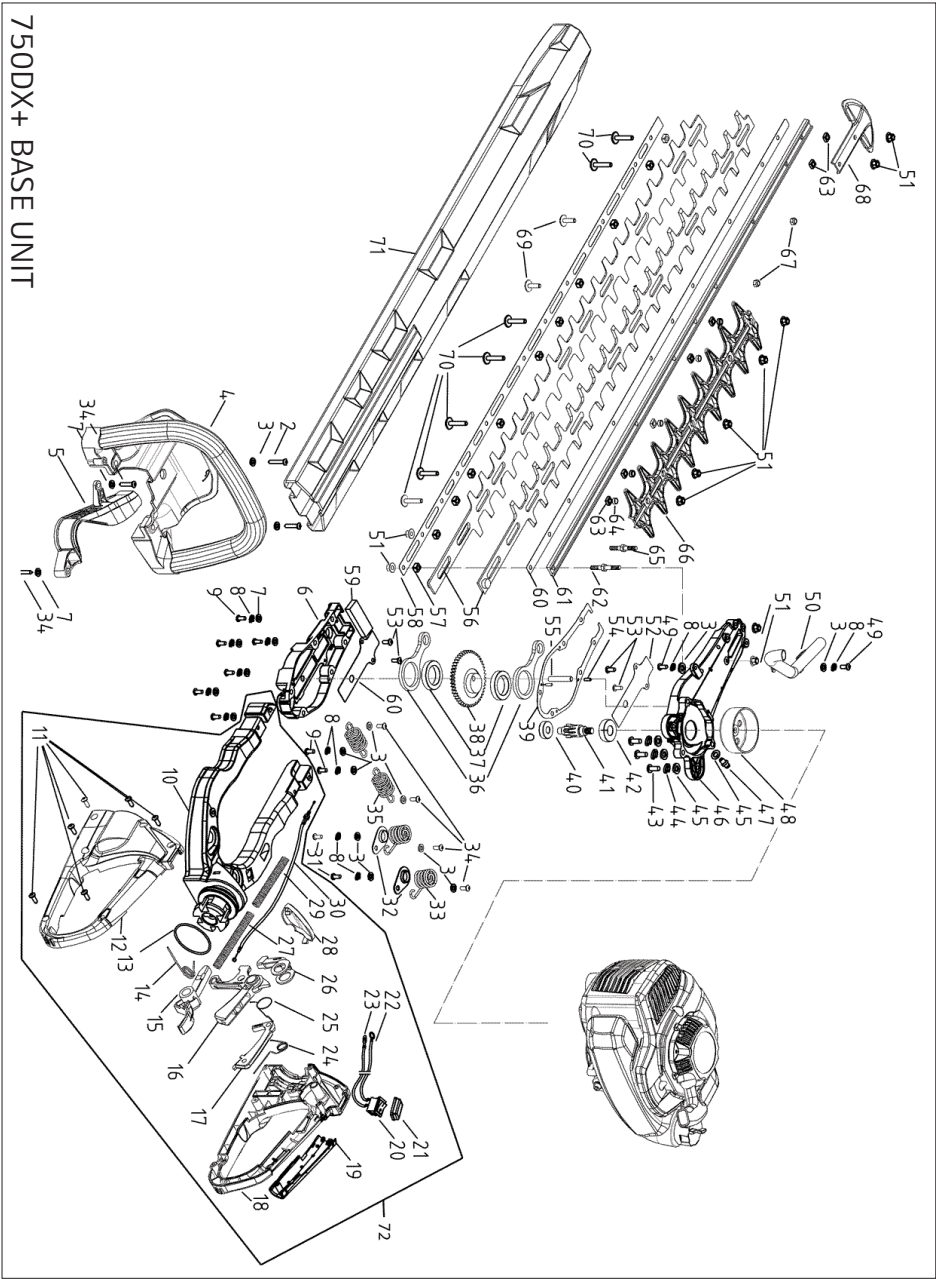
650DX+ BASE UNIT



ITEM	PART NUMBER	DESCRIPTION	QTY
2	MIGB/T845 ST4.8X25	TAPPING SCREW ST4.8X25	2
3	MIGJB25D.00.00-13	WASHER 5X12X1.5	12
4	MIHT2360D.00.00-1	FRONT HANDLE	1
5	MIHT2360D.01.09.03-00	COVER	1
6	MIHT2360D.04.00-2	GEAR BOX COVER	1
7	MIGB/T97.1 M5	WASHER M5	8
8	MIGB/T93 M5	SPRING WASHER M5	12
9	MIGB/T6191 M5X18	SCREW M5X18	8
10	MIHT2360D.00.00-2	BLADE DRIVE CASE (BASE)	1
11	MIGB/T845 ST4.2X14	TAPPING SCREW ST4.2X14	6
12	MIHT2360D.05.00-2	REAR HANDLE LEFT COVER	1
13	MIHT2360D.00.00-7	O-RING SEAL (43.8X3.1)	1
14	MIHT2360D.05.00-9	RETURN SPRING	1
15	MIHT2360D.05.00-8	ROTATION CONTROL LEVER	1
16	MIHT2360D.05.00-3	THROTTLE TRIGGER	1
17	MIHT2360D.05.00-6	THROTTLE TRIGGER LOCKOUT	1
18	MIHT2360D.05.00-1	REAR HANDLE RIGHT COVER	1
19	MIHT2360D.05.01-00	GRIP SKIN	1
20	MIHT2360D.00.04-00	ENGINE SWITCH	1
21	MI23151-B001-0000	WATER RESISTANT CAP	1
22	MIHT2360D.00.03-00	GROUND CONNECTING WIRE	1
23	MIHT2360D.00.02-00	SWITCH CONNECTING WIRE	1
24	MIHT2360D.05.00-7	THROTTLE RETURN SPRING	1
25	MIHT2360D.05.00-5	RETURN SPRING	1
26	MIHT2360D.05.00-4	POSITION BLOCK	1
27	MIHT2360D.00.00-9	REAR THROTTLE CABLE TUBE	1
28	MIHT2360D.00.00-3	COVER	1
29	MIHT2360D.00.00-8	FRONT THROTTLE CABLE TUBE	1
30	MIHT2360D.00.01-00A	THROTTLE CABLE	1
31	MIGB/T6191 M5X14	SCREW M5X14	2
32	MIHT2360D.00.00-6	WASHER	2
33	MIHT2360D.00.00-5	REAR ABSORBER SPRING	2
34	MIGB/T845 ST4.8X19	TAPPING SCREW ST4.8X19	6
35	MIHT2360D.00.00-4	FRONT ABSORBER SPRING	2
36	MIGJB25D.04.00-11	CON ROD	2
37	MIGB/T276 61805-2Z	BEARING 61805-2Z 25X37X7	2
38	MIGJB25D.04.00-7	ECCENTRIC GEAR	1
39	MIGJB25D.04.00-9	GEAR CASE GASKET	1
40	MIGB/T276 608-2RS	BEARING 608-2RS 8X22X7	1

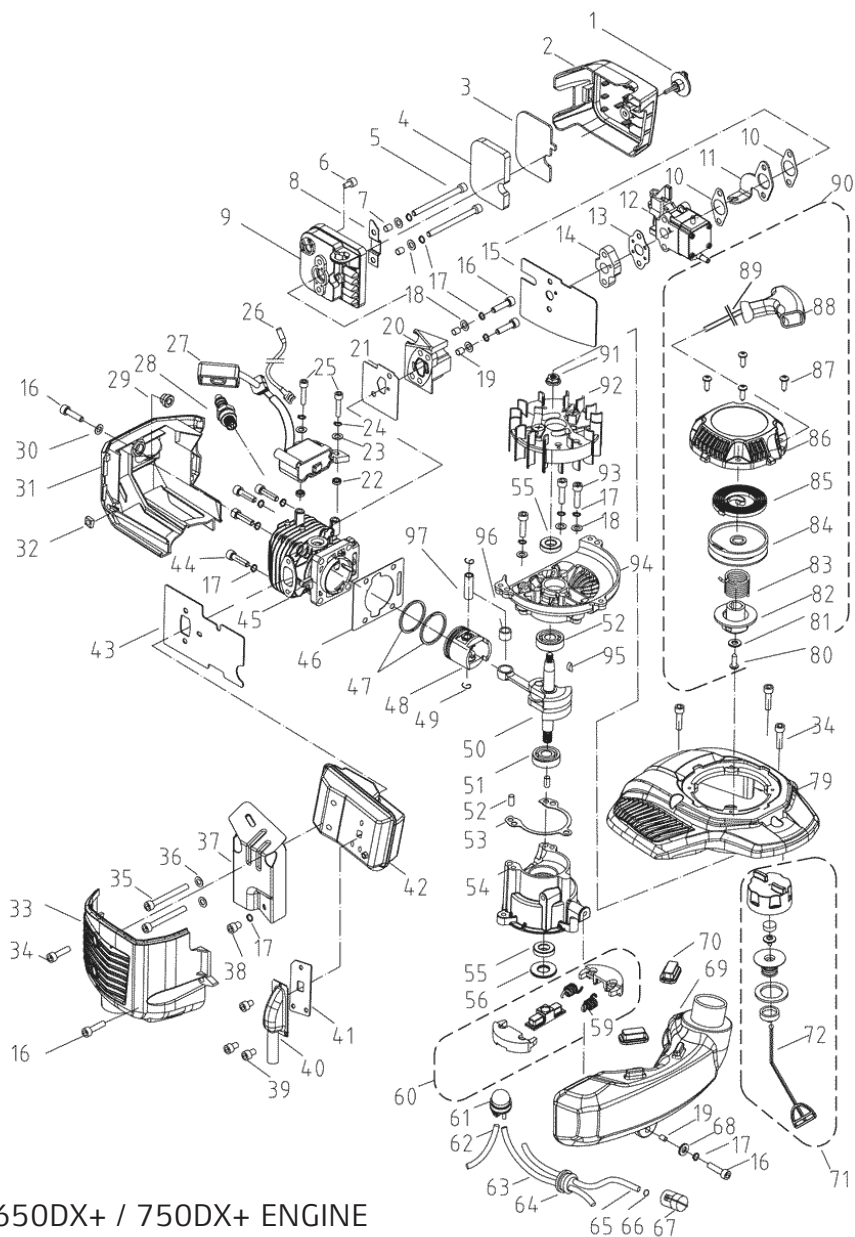
ITEM	PART NUMBER	DESCRIPTION	QTY
41	MIHT2360D.04.00-5	OUTPUT SHAFT	1
42	MIGB/T276 6001-2RS	BEARING 6001-2RS 12X28X8	1
43	MIGB/T6191 M6X22	SCREW M6X22	3
44	MIGB/T93 M6	LOCK WASHER M6	3
45	MIGB/T97.1 M6	FLAT WASHER M6	4
46	MIHT2360D.04.00-1	BLADE DRIVE CASE (TOP)	1
47	MIGJB25D.04.01-00	GREASE NIPPLE	1
48	MIHT2360D.04.01-00	CLUTCH DRUM	1
49	MIGB/T6191 M5X12	SCREW M5X12	2
50	MIHT2360D.00.05-00	EXHAUST PIPE	1
51	MIGB/T6187.1 M5	NUT M5	11
52	MIGJB25D.04.00-6	LINK ROD PLATE	2
53	MIGB/T2672 M4X10	SCREW M4X10	4
54	MIGB/T119.2 3X9	PIN 3X9	2
55	MIGB/T119.2 6X35	PIN 6X35	1
56	MIHT2360D.06.01-00	BLADE	2
57	MIGJB25D.06.00-3	BUSH	10
58	MIHT2360D.06.00-3	BOTTOM GRIPPER PLATE	1
59	MIHT2360D.04.00-4	FELT	1
60	MIHT2360D.06.00-2	PLATE	1
61	MIHT2360D.06.00-1	UPPER GRIPPER PLATE	1
62	MIHT2360D.06.00-7	SCREW M5X44	1
63	MIHT2360D.06.00-10	SQUARE NUT M5	7
64	MIHT2360D.06.00-4	BUSH 6X8X3	5
65	MIHT2360D.06.00-6	SCREW M5X40	1
66	MIHT2360D.06.00-11	PLATE	1
67	MIGB/T6186 M5	NUT M5	1
68	MIHT2360D.06.00-5	TIP GUARD	1
69	MIHT2360D.06.00-9	SCREW M5X17	1
70	MIHT2360D.06.00-8	SCREW M5X25	7
71	MIHT2375D.00.00-11	BLADE COVER	1
72	MI12.01.0557.	HANDLE ASSY	1

750DX+ BASE UNIT



ITEM	PART NUMBER	DESCRIPTION	QTY
2	MIGB/T845 ST4.8X25	TAPPING SCREW ST4.8X25	2
3	MIGJB25D.00.00-13	WASHER 5X12X1.5	12
4	MIHT2360D.00.00-1	FRONT HANDLE	1
5	MIHT2360D.01.09.03-00	COVER	1
6	MIHT2360D.04.00-2	GEAR BOX COVER	1
7	MIGB/T97.1 M5	WASHER M5	8
8	MIGB/T93 M5	SPRING WASHER M5	12
9	MIGB/T6191 M5X18	SCREW M5X18	8
10	MIHT2360D.00.00-2	BLADE DRIVE CASE (BASE)	1
11	MIGB/T845 ST4.2X14	TAPPING SCREW ST4.2X14	6
12	MIHT2360D.05.00-2	REAR HANDLE LEFT COVER	1
13	MIHT2360D.00.00-7	O-RING SEAL (43.8X3.1)	1
14	MIHT2360D.05.00-9	RETURN SPRING	1
15	MIHT2360D.05.00-8	ROTATION CONTROL LEVER	1
16	MIHT2360D.05.00-3	THROTTLE TRIGGER	1
17	MIHT2360D.05.00-6	THROTTLE TRIGGER LOCKOUT	1
18	MIHT2360D.05.00-1	REAR HANDLE RIGHT COVER	1
19	MIHT2360D.05.01-00	GRIP SKIN	1
20	MIHT2360D.00.04-00	ENGINE SWITCH	1
21	MI23151-B001-0000	WATER RESISTANT CAP	1
22	MIHT2360D.00.03-00	GROUND CONNECTING WIRE	1
23	MIHT2360D.00.02-00	SWITCH CONNECTING WIRE	1
24	MIHT2360D.05.00-7	THROTTLE RETURN SPRING	1
25	MIHT2360D.05.00-5	RETURN SPRING	1
26	MIHT2360D.05.00-4	POSITION BLOCK	1
27	MIHT2360D.00.00-9	REAR THROTTLE CABLE TUBE	1
28	MIHT2360D.00.00-3	COVER	1
29	MIHT2360D.00.00-8	FRONT THROTTLE CABLE TUBE	1
30	MIHT2360D.00.01-00A	THROTTLE CABLE	1
31	MIGB/T6191 M5X14	SCREW M5X14	2
32	MIHT2360D.00.00-6	WASHER	2
33	MIHT2360D.00.00-5	REAR ABSORBER SPRING	2
34	MIGB/T845 ST4.8X19	TAPPING SCREW ST4.8X19	6
35	MIHT2360D.00.00-4	FRONT ABSORBER SPRING	2
36	MIGJB25D.04.00-11	CON ROD	2
37	MIGB/T276 61805-2Z	BEARING 61805-2Z 25X37X7	2
38	MIGJB25D.04.00-7	ECCENTRIC GEAR	1
39	MIGJB25D.04.00-9	GEAR CASE GASKET	1
40	MIGB/T276 608-2RS	BEARING 608-2RS 8X22X7	1

ITEM	PART NUMBER	DESCRIPTION	QTY
41	MIHT2360D.04.00-5	OUTPUT SHAFT	1
42	MIGB/T276 6001-2RS	BEARING 6001-2RS 12X28X8	1
43	MIGB/T6191 M6X22	SCREW M6X22	3
44	MIGB/T93 M6	LOCK WASHER M6	3
45	MIGB/T97.1 M6	FLAT WASHER M6	4
46	MIHT2360D.04.00-1	BLADE DRIVE CASE (TOP)	1
47	MIGJB25D.04.01-00	GREASE NIPPLE	1
48	MIHT2360D.04.01-00	CLUTCH DRUM	1
49	MIGB/T6191 M5X12	SCREW M5X12	2
50	MIHT2360D.00.05-00	EXHAUST PIPE	1
51	MIGB/T6187.1 M5	NUT M5	11
52	MIGJB25D.04.00-6	LINK ROD PLATE	2
53	MIGB/T2672 M4X10	SCREW M4X10	4
54	MIGB/T119.2 3X9	PIN 3X9	2
55	MIGB/T119.2 6X35	PIN 6X35	1
56	MIHT2375D.06.01-00	BLADE	2
57	MIGJB25D.06.00-3	BUSH	10
58	MIHT2375D.06.00-3	BOTTOM GRIPPER PLATE	1
59	MIHT2360D.04.00-4	FELT	1
60	MIHT2375D.06.00-2	PLATE	1
61	MIHT2375D.06.00-1	UPPER GRIPPER PLATE	1
62	MIHT2360D.06.00-7	SCREW M5X44	1
63	MIHT2360D.06.00-10	SQUARE NUT M5	7
64	MIHT2360D.06.00-4	BUSH 6X8X3	5
65	MIHT2360D.06.00-6	SCREW M5X40	1
66	MIHT2360D.06.00-11	PLATE	1
67	MIGB/T6186 M5	NUT M5	1
68	MIHT2360D.06.00-5	TIP GUARD	1
69	MIHT2360D.06.00-9	SCREW M5X17	1
70	MIHT2360D.06.00-8	SCREW M5X25	7
71	MIHT2375D.00.00-1A	BLADE COVER	1
72	MI12.01.0557.	HANDLE ASSY	1



ITEM	PART NUMBER	DESCRIPTION	QTY
1	MIHT2360D.01.08.02-00	HAND SCREW	1
2	MIHT2360D.01.08.00-1	AIR FILTER COVER	1
3	MIHT2360D.01.08.00-3	AIR FILTER	1
4	MIHT2360D.01.08.00-2	SPONGE FILTER	1
5	MIGB/T9074.4 M5X65	SCREW M5x65	2
6	MIHT2360D.01.08.00-4	BLOCK	1
7	MIHT2360D.01.00.00-15	BUSH 5X6.5X9	2
8	MIHT2360D.01.00.00-10	LOCK PLATE	1
9	MIHT2360D.01.08.03-00	AIR FILTER CASE	1
10	MIHT2360D.01.00.00-9	GASKET (AIR FILTER)	2
11	MIHT2360D.01.00.00-4	CABLE SUPPORT FRAME	1
12	MIHT2360D.01.06.00-00A	CARBURETTOR	1
13	MIGJB25D.01.00.00-6	GASKET	1
14	MIHT2360D.01.00.00-16	SPACER PLATE	1
15	MIHT2360D.01.00.00-6	GASKET	1
16	MIGB/T6191 M5X18	SCREW M5X18	5
17	MIGB/T93 M5	SPRING WASHER M5	13
18	MIGB/T97.1 M5	WASHER M5	7
19	MIHT2360D.01.00.00-14	BUSH 5X6.3X7	3
20	MIHT2360D.01.00.01-00	INTAKE PIPE	1
21	MIHT2360D.01.00.00-5	GASKET (INTAKE)	1
22	MIYD25.01.00.00-2	IGNITION GASKET	2
23	MIGB/T97.1 M4	PLAIN WASHER M4	2
24	MIGB/T93 M4	WASHER M4	2
25	MIGB/T6191 M4X20	SCREW M4X20	2
26	MIHT2360D.01.11.03-00	GROUND WIRE	1
27	MIHT2360D.01.11.01-00	IGNITION COIL	1
28	SPCMR6A	SPARK PLUG	1
29	MIHT2360D.01.00.00-13	BUSH	1
30	MIGJB25D.00.00-13	WASHER 5X12X1.5	1
31	MIHT2360D.01.00.00-2	CYLINDER COVER	1
32	MIHT2360D.06.00-10	SQUARE NUT M5	1
33	MIHT2360D.01.00.00-3	MUFFLER COVER	1
34	MIGB/T6191 M5X14	SCREW M5X14	4
35	MIGB/T6191 M5X50	SCREW M5X50	2
36	MIGJB25D.01.00.00-17	COPPER WASHER M5	2
37	MIHT2360D.01.09.03-00	COVER	1
38	MIGB/T818 M5X5	SCREW M5X5	1
39	MIGB/T818 M4X5	SCREW M4X5	3

ITEM	PART NUMBER	DESCRIPTION	QTY
40	MIHT2360D.01.09.02-00	EXHAUST PIPE	1
41	MIHT2360D.01.09.00-1	GASKET (EXHAUST)	1
42	MIHT2360D.01.09.01-00	EXHAUST	1
43	MIHT2360D.01.00.00-7	GASKET (EXHAUST)	1
44	MIGB/T6191 M5X20	SCREW M5X20	4
45	MIHT2360D.01.02.00-00	CYLINDER COVER	1
46	MIHT2360D.01.00.00-8	GASKET (CYLINDER)	1
47	MIHT2360D.01.03.00-1	PISTON RING	2
48	MIHT2360D.01.03.02-00	PISTON	1
49	MIYD36.01.03.00-4	PISTON PIN CIRCLIPS	2
50	MIHT2360D.01.03.01-00	CRANKSHAFT	1
51	MIGB/T276 6000/P6	BEARING 6000/P6	2
52	MIGB/T119.2 5X10	PIN 5X10	2
53	MIHT2360D.01.01.00-3	GASKET (CRANKCASE)	1
54	MIHT2360D.01.01.00-2	BOTTOM CRANKCASE	1
55	MIGJB25D.01.00.06-00	OIL SEALS 10X20X5	2
56	MIYD25.01.13.00-2	CLUTCH WASHER	1
59	MIYD25.01.13.01-3	CLUTCH SPRING	2
60	MIYD25.01.13.01-00	CLUTCH	1
61	MIYD38-3.03.00-4A	PRIMER ASSY	1
62	MIHT2360D.01.00.00-12	PRIMER TUBE 2.5X5X75	1
63	MIHT2360D.01.13.00-3	RETURN TUBE 2.5X5X100	1
64	MIGJB25D.03.00-1	GROMMET	1
65	MIHT2360D.01.13.00-2	FUEL TUBE 2.5X5X230	1
66	MIYD45.01.01.01-3	CIRCLIP	1
67	MIYD38-3.03.04-00	FUEL FILTER	1
68	MIGB/T96 M5	WASHER M5	1
69	MIHT2360D.01.13.00-1	FUEL TANK	1
70	MIHT2360D.01.00.00-11	FUEL TANK ABSORBER	2
71	MIHT2360D.01.13.01-00	FUEL CAP	1
72	MIGJB25D.03.01-6	CAP RETAINER	1
79	MIHT2360D.01.00.00-1	TOP COVER	1
80	MIGB/T2672 M4X12	SCREW M4x12	1
81	MIGB/T96 M4	WASHER M4	1
82	MITHT245D.02.00-6	RATCHET GEAR	1
83	MITHT245D.02.00-7	TORQUE SPRING	1
84	MITHT245D.02.00-1	RECOIL PULLEY	1
85	MITBC261D.01.12.00-5	RECOIL SPRING	1
86	MIHT2360D.01.12.01-00	STARTER COVER	1



ITEM	PART NUMBER	DESCRIPTION	QTY
87	MIGB/T845 ST4X14	TAPPING SCREW ST4.2X14	1
88	MITCS6200.02.00-3	STARTER HANDLE	1
89	MIGJB25D.02.00-3	ROPE	1
90	MIHT2360D.01.12.00-00	STARTER	1
91	MIGB/T6187.1 M6	HEXAGON NUT WITH FLANGE M6	1
92	MIHT2360D.01.10.00-00	FLYWHEEL	1
93	MIGB/T6191 M5X25	SCREW M5X25	1
94	MIHT2360D.01.01.00-1	TOP CRANKCASE	1
95	MIGB/T1099 3X3.5X10	SEMI-CIRCULAR KEY 3X3.5X10	1
96	MIHT2360D.01.03.03-00	BEARING 8X11X10	1
97	MIHT2360D.01.03.00-2	PISTON PIN	1





CONDITIONS OF WARRANTY

The manufacturer warrants the product against faulty materials and workmanship for a standard 1 year period and thereafter for the set period specific to each range from the date of purchase. Warranty does not extend to failure due to fair wear and tear.

SP	- 1 Year
SELECT	- 3 Years (Subject to yearly servicing)
PREMIUM	- 5 Years (Subject to yearly servicing)
PRO	- 5 Years Domestic / 3 Years Commercial (Subject to yearly servicing)

(Extended warranty is subject to online registration and yearly servicing)

SP, SELECT and PREMIUM ranges used for commercial purposes have a warranty period of 3 months from the date of purchase.

The manufacturer undertakes to replace any spare parts that are classified as defective by an appointed Mitox service dealer. The manufacturer will not accept liability for the replacement of the machine, either partially or wholly, and /or consequential damages and /or interest charges either directly or indirectly.

Warranty does not cover failure due to:

Insufficient maintenance.

Incorrect fuel mixture and stale fuel.

Abnormal use or accidental damage.

Incorrect assembly, adjustment or operation of the product.

Spare parts that are subject to wear e.g. bag, blades, bearings, cables, guards, deflectors, spark plugs, air filters etc.

Neither does warranty extend to:

Freight and packing costs.

Use of non-genuine spare parts i.e. those from another manufacturer.

Use of the machine for any other purpose than that for which it was designed.

Use and maintenance of the machine in a manner not described in the owner's manual.

As part of our policy of continuous product improvement, we reserve the right to alter or amend this specification without notice. As a result, the product may differ from the information contained herein but any alteration will only be implemented without notice if it is classified as an improvement to the above specification.

READ THE MANUAL CAREFULLY BEFORE OPERATING THE MACHINE

When ordering spare parts, please quote the part number, this can be found in the parts list included in this manual.

Retain your proof of purchase, without which no warranty can be offered.

Mitox Garden Machinery, Wincanton Business Park, Wincanton, Somerset, BA9 9RS