

# Operator's Manual

user manual, maintenance instructions and spare parts

## 760BPX Premium Backpack Blower

Read this manual carefully before operating the machine



## Foreword & Product Description

Congratulations on purchasing this MITOX® product. 'Quality and Value for Money' is our ideal and we are sure you will be satisfied with the quality and performance of our products. Reading and following the instructions in this manual will help ensure the best performance and longest lifespan of your machine. If this product is sold, this manual should be passed on to the buyer.

This MITOX® product is a 2-stroke fast running power tool and is designed to be used in a domestic application. This product is designed to be used as a Backpack Blower and should be used for blowing leaves. It should never be used for any other purpose, as doing so could result in unforeseen accidents and injuries occurring. Only approved MITOX® accessories should be used with this product.







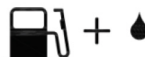




## Thank you for choosing a MITOX® product.

This manual contains the latest information available at the time of printing. There may be minor differences between the actual product and illustrations and text in this manual. MITOX® reserves the right to change or amend products without prior notice or obligation. Any alterations should be considered as improvements to the product.

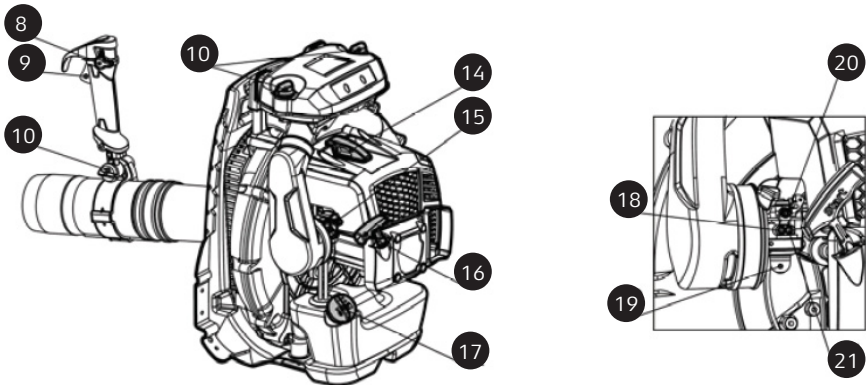
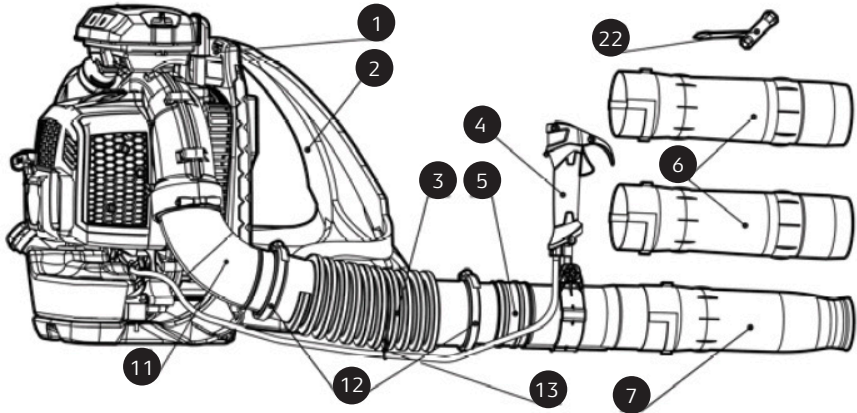
## Table of Contents

|                                      |    |
|--------------------------------------|----|
| Safety symbols .....                 | 3  |
| Component location .....             | 4  |
| Safety .....                         | 7  |
| Fuel Advice / Safety .....           | 10 |
| 1. Operation instructions .....      | 12 |
| 2. Preparing to work .....           | 15 |
| 3. Using the machine .....           | 16 |
| 4. Operating the blower .....        | 18 |
| 5. Routine maintenance .....         | 19 |
| 6. Extraordinary maintenance .....   | 23 |
| 7. Technical specification .....     | 24 |
| Parts drawings / specification ..... | 26 |

### Safety Symbols

|   |   |
|---|---|
| <p>Operate the engine switch knob - Flipping the switch knob towards the "STOP" marking, immediately the engine stops.</p>  |    |
| <p>Warning! Danger. The failure to use this machine correctly can be hazardous for oneself and others. Read the instruction manual before using the machine.</p>            |    |
| <p>The blower operator must make sure that no bystanders or animals come nearer than 15 metres.</p>   |    |
| <p>If you are using the machine every day in normal conditions, you can be exposed to a noise level of 85 dB (A) or higher. Wear safety glasses and hearing protection.</p> |    |
| <p>Wear gloves and protective footwear!</p>   |    |
| <p>Guarantee A-weighted emission noise power level</p>  |    |
| <p>Fuel mixture tank</p>  |    |
| <p>Close the choke</p>  |   |
| <p>Open the choke</p>   |  |
| <p>Adjustment of carburettor<br/>"H" High speed adjustment, "L" Low speed adjustment</p>  |  |
| <p>Engine speed continuously variable</p>   |  |

**Component Location**



## Component Location

|     |  |  |
|-----|--|--|
| 1.  | Handgrip                               | For carrying the unit when not in use                  |
| 2.  | Harness                                | Fully adjustable for maximum comfort                   |
| 3.  | Flexible Hose                          | For easy adjustment of the air flow direction          |
| 4.  | Control Handle                         | Fully adjustable with throttle control & on/off switch |
| 5.  | Rear tube                              | Rotatable for ease of use                              |
| 6.  | Intermediate tube x 2                  | To lengthen the blow tube tube for comfortable use     |
| 7.  | Nozzle                                 | Increases the air velocity                             |
| 8.  | Engine switch lever / Throttle setting | On / Off switch and cruise control                     |
| 9.  | Throttle Trigger                       | Spring loaded to return to idle when released          |
| 10. | Lock knob                              | To adjust control handle angle / access air filter     |
| 11. | Angle tube                             | Changes direction of airflow                           |
| 12. | Clamp                                  | Secures connecting tubes                               |
| 13. | Clip                                   | To hold electrics cable                                |
| 14. | Spark plug cap                         | Remove to access spark plug                            |
| 15. | Choke                                  | To assist in cold starting                             |
| 16. | Starter handle                         | Hold and pull to start                                 |
| 17. | Fuel tank cap                          | Ensure tightened correctly after refuelling            |
| 18. | L needle                               | Low speed adjustment                                   |
| 19. | Primer bulb                            | To prime the carburettor before starting               |
| 20. | T screw                                | Air / Fuel mixture control                             |
| 21. | H needle                               | High speed adjustment                                  |
| 22. | Spark plug wrench                      | Remove and replace Spark plug                          |

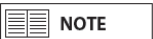
## Warnings in this manual



This mark indicates instructions which must be followed in order to prevent accidents which could lead to serious bodily injury or death.



This mark indicates instructions which must be followed or it may lead to mechanical failure, breakdown or damage.



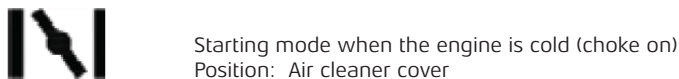
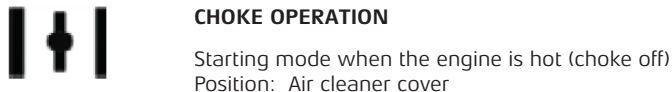
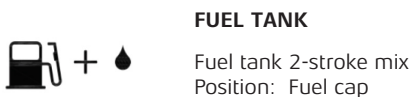
This mark indicates tips or hints or useful directions in the use of this product.

## Taking Care of Warning Labels

Always keep warning labels clean and free of scratches, which might make them illegible or difficult to read. If the warning labels provided with this product become damaged, peel off, or otherwise become illegible or difficult to read, order new labels from your authorised MITOX® servicing dealer and replace the damaged labels. When applying new labels, first wipe away any dirt and dry the surface before applying the new label in the same place as the original label.

## Explanation of Symbols on the Machine

For safe operation and maintenance, these symbols are carved in relief on the machine:





## **Safety Precautions**

Read this Owner/Operator Manual carefully. Be sure you understand how to operate this product properly before you use it. Failure to do so could result in serious injury.

Keep this manual safe so that you may refer to it later, whenever any questions arise. Also note that you are able to contact your authorised MITOX® dealer for assistance.

Always include this manual when selling, lending or otherwise transferring ownership of this product.

This product is equipped with an extremely sharp blade/blades, always wear sturdy gloves when handling the blades and fit any safety guards when not in use.

This product is equipped with an extremely sharp blade/blades, always wear sturdy gloves when handling the blades and fit any safety guards when not in use.

When using this product for the first time, take it to a wide, clear, open space, start the engine and practice handling it until you are sure that you will be able to handle it competently in actual operation.

You should never use this product when under the influence of alcohol, suffering from exhaustion or lack of sleep, suffering from drowsiness as a result of having taken medication, or at any other time when your judgement might be impaired or that you might not be able to operate it properly and in a safe manner.

Never allow children or anyone unable to fully understand the directions given in this manual to use this product.

When planning your work schedule, allow plenty of time to perform the work and allow plenty of time for rest. Limit the amount of time you continuously use this product to 30-40 minutes per session and take 10-20 minutes of rest between work sessions. Also, try to keep the total amount of work performed in a single day to 2 hours.

Never run the engine indoors as the exhaust gases contain harmful carbon monoxide.

## **Never use this product in the conditions described below:**

When the ground is slippery or when other conditions exist which might make it difficult to maintain a steady posture while using this product.

At night, at times of heavy fog, or at any other time when your field of vision is limited and it would be difficult to gain a clear view of the area where it is to be used. In heavy rain, during lightning storms, at times of strong or gale-force winds or at any other time when the weather conditions might make it unsafe to use this product.

## Work Clothing & Safety Equipment

When using this product, you should wear the correct Personal Protective Equipment.

- Helmet (these have a 5 year lifetime)
- Safety goggles / face protector
- Ear protection
- Thick work gloves
- Non-slip, steel toe capped work boots
- Strong, durable work clothing; shirts should be long sleeved and trousers should be full length

## Safety & Operation



**Improper handling can cause accidents which may in turn lead to serious injury or death. Always adhere to the following instructions when using this product.**

- Never hold this product with the cutting head pointing towards someone else.
- Never allow the blade/blades to come into contact with your body.
- Always turn off the engine before making adjustments or when coming close to the cutting head.

## Before Starting Work

Carefully check the work area and remove any obstacles. Within a perimeter of 15 metres of the work area should be considered a hazardous area, into which no-one should enter while this product is being used. When necessary this area should be marked with a warning rope, warning signs or other forms of warning.

If work is to be carried out by two or more operators, care should be taken to constantly check the location of other operators within the work area, to maintain a safe distance between each operator.

Before starting work all components of this product should be checked to make sure that it is in proper working order. Ensure there are no loose screws or bolts, fuel leaks, ruptures, dents, broken guards or any other problems which might affect the safe operation.

Keep all parts of your body away from the cutting head when the engine is running.



## Before Starting the Engine

Place your machine on the ground in a flat, clear area and hold it firmly to ensure that neither the cutting head or throttle come into contact with any obstacles when the engine starts.

## After Starting the Engine

Ensure the cutting head stops moving when the throttle trigger is released (idle). If the cutting head continues to move when the engine is at idle, adjust the idle screw on the carburettor to a point where the cutting head stops moving. If this cannot be achieved, take your machine to your authorised MITOX<sup>®</sup> dealer for adjustment.

## Avoid Noise Problems



### NOTE

Check and follow the local regulations for sound levels and hours of operation for garden machinery. In general, operate garden machinery between 8am and 5pm weekdays and 9am and 5pm weekends. Avoid using garden machinery early in the morning and/or late at night.

## Safety During Operation



### WARNING

When using this product grip the handles firmly with both hands, place your feet slightly apart so your weight is evenly distributed across both legs and always maintain a steady even posture. Do not use whilst on a ladder. Never attempt to cut overhead or with one hand.

- Maintain full engine speed when cutting.
- Be careful not to hit the cutting head against stones or the ground.
- Never allow other persons to enter the work area, particularly children or pets. Doing so may expose them to danger and flying debris can cause injuries.
- If material gets caught in or around the cutting head during operation, always stop the engine before removing it.
- Never touch the spark plug or HT cable while the engine is running, doing so may result in an electrical shock.
- Never touch the exhaust, spark plug or any metallic parts while the engine is running or immediately after shutting down the engine. These parts reach high temperatures during operation and doing so could result in serious burns.
- When you finish working in one location and wish to continue work in another area, stop the engine and fit any blade safety guards.

- Always remove fuel from the fuel tank before transportation to reduce the risk of fuel spillage.
- Never leave this product exposed to direct sunlight, as this can heat the fuel tank and could cause a discharge of fuel flooding the engine.

## Fuel Safety



This product is designed to be run on a 2-stroke oil and unleaded petrol mixture.

This fuel is highly flammable; never store cans of fuel or fill the fuel tank in any place where there is a source of heat or fire. This could cause the fuel to ignite.

Do not smoke whilst operating or fuelling this product.

Before filling the fuel tank always ensure the engine has been stopped, allowed to cool and there are no sparks or naked flames nearby.

Shake the fuel container to thoroughly mix the 2-stroke oil and unleaded petrol. Clean dirt from around the fuel cap before removing it and use a filtered funnel to fill the fuel tank up to 80% of its capacity. Replace the fuel cap and tighten securely. If any spillage of the 2-stroke mixture occurs whilst filling the fuel tank, use a dry rag to wipe it away before starting the engine.

After fuelling this product, carry it 5 metres or more away from where it was fuelled, before starting the engine.

## 2-Stroke Fuel Mixture




### RECOMMENDED MIXING RATIO IS 40:1

FUEL WITH NO 2-STROKE OIL (Raw Petrol) will cause severe damage to the engine, which is not covered by the manufacturer's warranty.

Use fresh unleaded petrol (95RON) and semi-synthetic 2-stroke oil, which meets the specifications of API TC, ISO-L-EGC, JASO FC (Low Smoke) oil. Mix a ratio of 40 parts petrol to 1 part of 2-stroke oil.

The correct specification 2-stroke oil will reduce the formation of ash and carbon deposits on the spark plug, piston, exhaust muffler and cylinder as well as reducing emissions of harmful exhaust gases.

 **NOTE**

Due to the increased Ethanol content in today's fuel, we recommend the use of B3C Ethanol Shield 2-stroke oil or Ethanol Shield Fuel Stabiliser, to protect your MITOX<sup>®</sup> engine against the harmful effects of Ethanol.



Visit [www.b3cfuel.co.uk](http://www.b3cfuel.co.uk) for more information

## **Fuel Storage (Without Ethanol Shield)**

 **IMPORTANT**

Mixed 2-stroke fuel, that has been left unused for one month or more may damage the carburettor and result in the engine failing to start or operate correctly.

When storing this product for one month or more, empty the fuel tank and run the engine until it stops, to drain the carburettor of fuel.

Ethanol in unleaded fuel can cause deterioration of rubber/plastic components during prolonged storage, so always use good quality, fresh fuel.

## Operating Instructions

### 1. Prepare the Machine

The machine can be used as a blower; for this use it is necessary to correctly arrange the appropriate accessories included with the equipment.



Unpacking and completing the assembly should be done on a flat and stable surface, with enough space for moving the machine and its packaging, always making use of suitable equipment.

#### 1.1 Connecting the flexible tube (Fig. 1)

Insert the angle tube (11) into the flexible hose (3) to the end.

Turn the lock screw clockwise with the spark plug wrench (22) to tighten the clamp (12).

**NOTE** - Lubricate the tubes a little to facilitate assembly.

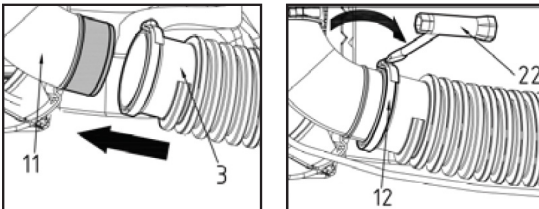


FIG1.

#### 1.2 Connecting the Rear tube (Fig. 2)

Insert the rear tube (5) into the flexible hose (3) to the end.

Turn the lock screw clockwise with the spark plug wrench (22) to tighten the clamp (12).

**NOTE** - Lubricate the tubes a little to facilitate assembly.

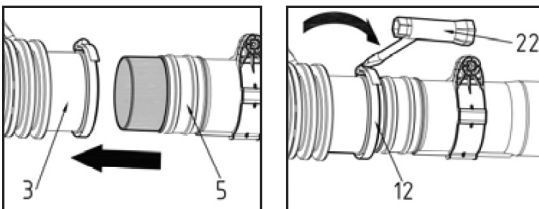


FIG2.

### 1.3 Connecting the intermediate tube (Fig. 3)

Align the pin (5a) and the slot (6b) and fit the first intermediate tube (6) onto the rear tube (5) (step 1).

Rotate the intermediate tube clockwise to the end (approximately 90 degrees) (step 2).

Align the pin (6a) and the slot (6b) and fit the second intermediate tube (6) onto the first intermediate tube (6) (step 1).

Rotate the intermediate tube clockwise to the end (approximately 90 degrees) (step 2).

Remove the tubes in verse for cleaning, maintenance, transportation or storage.

**NOTE** - Lubricate the tubes a little to facilitate assembly.

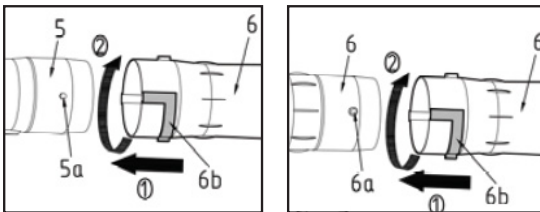


FIG 3.

### 1.4 Connecting the Nozzle (Fig. 4)

Align the pin (6a) and the slot (7a) and fit the nozzle (7) onto the intermediate tube (6) (step 1).

Rotate the nozzle clockwise to the end (approximately 90 degrees) (step 2).

Remove the tubes in reverse for cleaning, maintenance, transportation or storage.

**NOTE** - Lubricate the tubes a little to facilitate assembly.

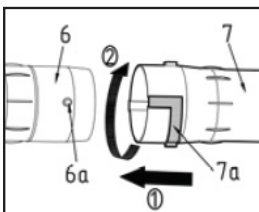


FIG 4.

### 1.5 Fixing the control handle

Fit the control handle (2) onto the clamping ring (5a), and then tighten it with the lock knob (7). (Fig. 5)

The control handle is multi-position. Rotate the control handle by loosening the lock knob to acquire the most comfortable position, then tighten the lock knob securely. (Fig. 6)

**NOTE** - Ensure the teeth (2a) on the control handle and clamping ring are geared together

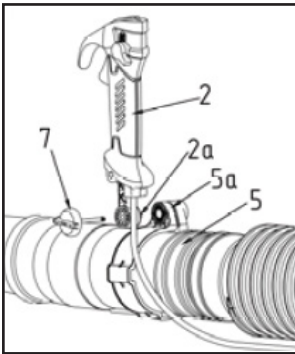


FIG 5.

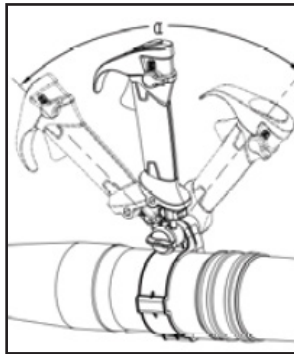


FIG 6.

### 1.6 Fixing the throttle cable (Fig. 7)

Fit the throttle cable into the clip (13), and then hook the clip on the flexible hose.

**NOTE** - Lubricate the tubes a little to facilitate assembly.

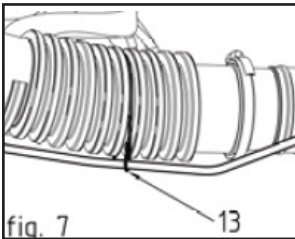


FIG 7.

## 2. Preparing to work

Before stating work please follow the instructions below:

- Check that all the screws on the machine are tightly fastened
- Check the air filter is clean
- Check that vibration absorbers are fine
- Prepare accessories and make sure they are correctly mounted
- Fill with fuel as indicated

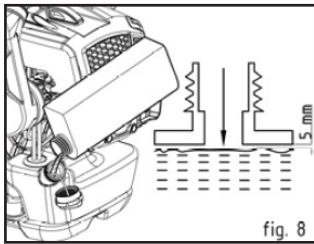


FIG 8.

- Do not overfill - Leave a minimum of 5mm of space between the top of the fuel-oil mixture and the inside edge of the tank to allow for expansion. (Fig. 8)

### 3. Using the Machine

#### 3.1 Starting the Machine

Before starting the engine, place the machine on stable ground and make sure the blow tubes are not crushed.

##### 3.1.1 Cold starting

A "cold" start of the engine means starting it after at least 10 minutes from when it was switched off or after refuelling.

1. Set the engine switch lever (8) at the intermediate position "I" (fig. 9).
2. Turn the choke knob (15) clockwise to «CLOSED» position (fig. 10).
3. Press the primer bulb (19) 7 to 10 times to prime the carburettor (fig. 11).
4. Hold the machine firmly with left your hand on the hand grip (1), in order not to lose control of the machine during starting (fig. 12).
5. Pull the starter handle (16) slowly for 10 - 15 cm until you feel some resistance, then pull it hard a few times until you hear the first firing occur (fig. 12).
6. Turn the choke knob (15) counterclockwise to «OPEN» position (fig. 10)



FIG 9.

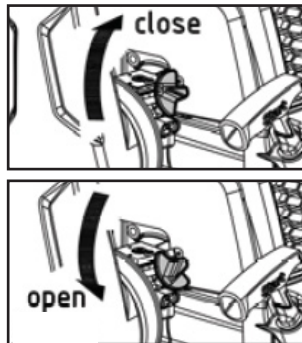


FIG 10.

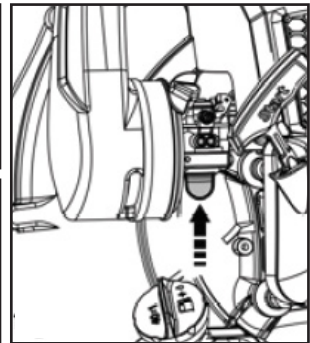
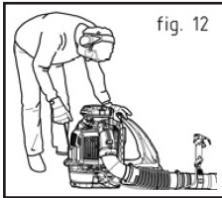


FIG 11.

**IMPORTANT** To avoid breaking the starter rope, do not pull the whole length of it or let it slide along the edge of the cable guide hole. Release the starter gradually, to avoid letting it fly back uncontrollably.





7. Pull the starter handle (16) again until the engine starts (fig. 12)
8. When the engine has started, allow the engine run to at idle for 10 seconds.
9. Rev the engine a little using the throttle trigger (9) to warm it up before using the machine.

**IMPORTANT** If the starter rope is pulled repeatedly with the choke on, it may flood the engine and make starting difficult.

If you happen to flood the engine, follow the below procedure:

Set the ignition switch to the STOP position 0. Turn the choke to the «OPEN» position. Remove the spark plug and dry it. Pull the recoil starter handle slowly several times to drain the fuel from the combustion chamber. Wait until the fuel evaporates and refit the spark plug.

### 3.1.2 Adjusting the Harness

The harness must always be worn when working with the machine. Failure to do so means you will be unable to manoeuvre safely and this can result in injury to yourself or others.

- Make sure that the waist belt is closed and correctly adjusted.
- There is a risk that an unclosed belt can get stuck or sucked into the fan of the machine.



### 3.1.3 Hot Starting

To hot start the engine immediately after it has stopped, follow steps 1 - 3 - 4 - 6 - 7 of the above procedure, making sure the choke knob is set on the «RUN» position.

### 3.2 Adjusting the Speed

Rotor rpm must be proportionate to the type of work and regulated by the throttle trigger (9) located on the upper handgrip. The throttle trigger can be held in any required position using the throttle setting device (8).

### 3.3 Stopping the Engine

To stop the engine:

- Turn the throttle setting device counterclockwise to the 0 position (fig. 9).
- Release the throttle trigger, allow the engine to run at idle for 10 seconds.
- Turn the throttle setting device counterclockwise to the end (fig. 9).

## 4. Operating the Blower



The Engine speed should be adjusted to the type of material to be removed, it is seldom necessary to use full throttle, and many work procedures can be done at half throttle:

- If necessary, dampen the surface to be cleaned in order to avoid creating too much dust
- Use the engine at low speed for lightweight material
- Use the engine at average speed to move grass and lightweight leaves on pavement or solid ground
- Use the engine at high speed for heavier materials like fresh snow or voluminous dirt
- Use a rake or a brush to release rubbish stuck to the ground.
- Hold the opening of the blower as close to the ground as possible. Utilise the entire length of the blow pipe to keep the air current close to the ground.



**Always pay the utmost attention to prevent removed material or dust from injuring people or animals or damaging property. Always assess the wind direction and never work against the wind.**

#### 4.1 End of Operations

When you have finished your work:

- Switch off the engine as indicated above
- Disconnect the spark plug cap.

#### 5. Routine Maintenance



**Correct maintenance is essential to maintain the original efficiency and safety of the machine over time.**

**During maintenance operations:**

- Remove the spark plug cap.
- Wait until the engine is sufficiently cold.
- Wear protective gloves.
- Do not work on the machine if not in possession of the necessary skills and tools.

#### 5.1 Storage

After every working session, clean the machine thoroughly to remove all dust /debris, and repair or replace any faulty parts.

The machine must be stored in a dry place away from the elements.

#### 5.2 Cylinder and Silencer

To reduce fire risks, periodically clean the cylinder fins with compressed air and clear the silencer area from dust, leaves or other debris.

#### 5.3 Starting System

To avoid overheating and damage to the engine, always keep the cooling air vents clean and free of sawdust and debris.

The starter rope must be replaced as soon as it shows signs of wear.

#### 5.4 Nuts and Screws

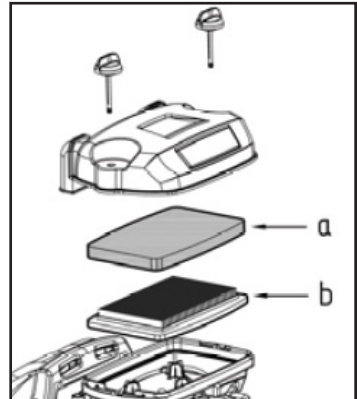
Periodically check that all the nuts and screws are securely tightened and the handgrips are tightly fastened.

## 5.5 Air Filter

**IMPORTANT** Cleaning the air filter is essential to guarantee the efficiency and duration of the machine. Do not work with a damaged filter or without a filter, as this could permanently damage the engine.

It must be cleaned after every 8 - 10 working hours. Clean the filter as follows:

- Loosen the lock knob (10), remove the cover, sponge filter (a) and paper filter (b).
- Wash the sponge filter with soap and water, then leave the filter to dry in the open air. Do not use petrol or other solvents.
- Clean the paper filter with pressurised air.
- Refit the sponge filter, paper filter and cover and tighten the lock knob. Make sure the paper filter is on the bottom, and the sponge filter is on the top.

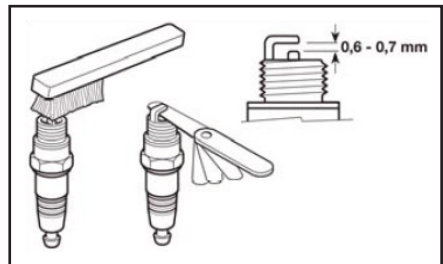


## 5.6 Checking the Spark Plug

Periodically remove and clean the spark plug using a metal brush to get rid of any deposits.

Check and reset the correct distance between the electrodes.

Replace the spark plug and fasten it firmly using the supplied wrench.



The spark plug must be replaced with one with the same characteristics whenever the electrodes have burnt or the insulation has worn, and in any case every 100 working hours.



### 5.7 Carburettor Adjustments

**IMPORTANT** When the engine tends to switch off or there is not much difference in speed when using the throttle trigger, it is recommended to adjust the carburation settings. This operation must be performed by an authorised MITOX® dealer.

### 5.8 Long Periods of Non-use

**IMPORTANT** If the machine will not be used for a period of more than 2 - 3 months it is recommended to follow some advice to avoid difficulty when you wish to use the machine and to prevent permanent damage to the engine.



**5.9 Maintenance Timescale**

| The following intervals apply to normal operating conditions only.<br><br>If your daily working time is longer or operating conditions are difficult (very dusty work area, etc.), shorten the specified intervals accordingly. |   | Before Operation | After daily work | After each re-fuel | Weekly | Monthly | Annually | If problem | If damaged | If required |
|---|---|------------------|------------------|--------------------|--------|---------|----------|------------|------------|-------------|
| Complete Machine  | Visual inspection (Condition, wear, leaks)                | *                |                  | *                  |        |         |          |            |            |             |
|   | Clean   |                  | *                |                    |        |         |          |            |            |             |
| Control Handle  | Check operation   | *                |                  | *                  |        |         |          |            |            |             |
| Air Filter  | Clean   |                  |                  |                    | *      |         |          | *          |            | *           |
|   | Replace   |                  |                  |                    |        |         |          |            | *          | *           |
| Fuel Filter   | Check   |                  |                  |                    |        | *       |          | *          |            |             |
|   | Replace filter  |                  |                  |                    |        |         | *        |            | *          |             |
| Carburettor*  | Check idle setting  |                  | *                |                    |        |         |          |            |            |             |
|   | Re-adjust idle  |                  |                  |                    |        |         |          |            |            | *           |
| Spark Plug  | Clean and re-adjust electrode gap every 10 working hours. |                  |                  |                    |        |         |          | *          |            |             |
|   | Replace after 100 hours of operation                      |                  |                  |                    |        |         |          |            | *          |             |
| Cooling Inlets  | Clean   |                  | *                |                    |        |         |          |            |            | *           |
| All accessible screws   | Check   |                  |                  |                    |        | *       |          | *          |            |             |
|   | Retighten   |                  |                  |                    |        |         |          | *          |            | *           |
| Anti-Vibration Elements   | Check   | *                |                  |                    |        |         |          | *          |            | *           |
|   | Replace*  |                  |                  |                    |        |         |          |            | *          |             |
| Safety Labels   | Replace   |                  |                  |                    |        |         |          | *          |            |             |
| Muffler   | Clean   |                  |                  |                    |        |         | *        |            |            |             |

**\*MITOX® recommends that this work be performed by a MITOX® servicing dealer or qualified persons. Use only the spare parts recommended by MITOX®.**

## 6. Extraordinary Maintenance

This work must be carried out exclusively by an authorised MITOX dealer.

All and any operations performed in unauthorised centres or by unqualified persons will invalidate the warranty.

### 6.1 Fuel Filter

Inside the fuel tank there is a filter which prevents impurities from entering the engine.

The filter should be replaced once a year by an authorised MITOX dealer.

### 6.2 Carburetor Adjustments

The carburetor is tuned by the manufacturer to achieve maximum performance in all situations, with a minimum emission of toxic gas in compliance with the regulations in force. In the case of poor performance contact your Dealer for a check of the carburation and engine.

## 7. Diagnostics

### 1. The engine will not start or will not keep running

- **Incorrect starting procedure:** Follow instructions in Chapter 3
- **Dirty Spark Plug / Incorrect distance between electrodes:** Check Spark Plug (See Chapter )
- **Air Filter Clogged:** Clean or replace the filter (see chapter 5)
- **Carburation Problems:** Contact your dealer
- **Intake Grille Open:** Close the grille
- **Blower Tube not Fitted:** Fit the tube

### 2. The engine starts but is lacking in power

- **Air Filter Clogged** - Clean or replace the filter (see chapter 5)
- **Carburation Problems** - Contact your Dealer

### 3. The engine runs irregularly and lacks in power when revved

- **Dirty spark plug or incorrect distance between the electrodes** - Check the spark plug (see chapter 5)
- **Carburation Problems** - Contact your Dealer

### 4. The engine makes too much smoke

- **Incorrect consumption of fuel mixture** - Prepare the fuel mixture according to the instructions (see chapter 2)

### 5. The machine starts to vibrate abnormally

- **Damaged or loose parts** - Stop the machine and disconnect the spark plug cable. Inspect for damage. Check for and tighten any loose parts. Have all checks, repair work and replacements carried out by an authorised MITOX dealer.

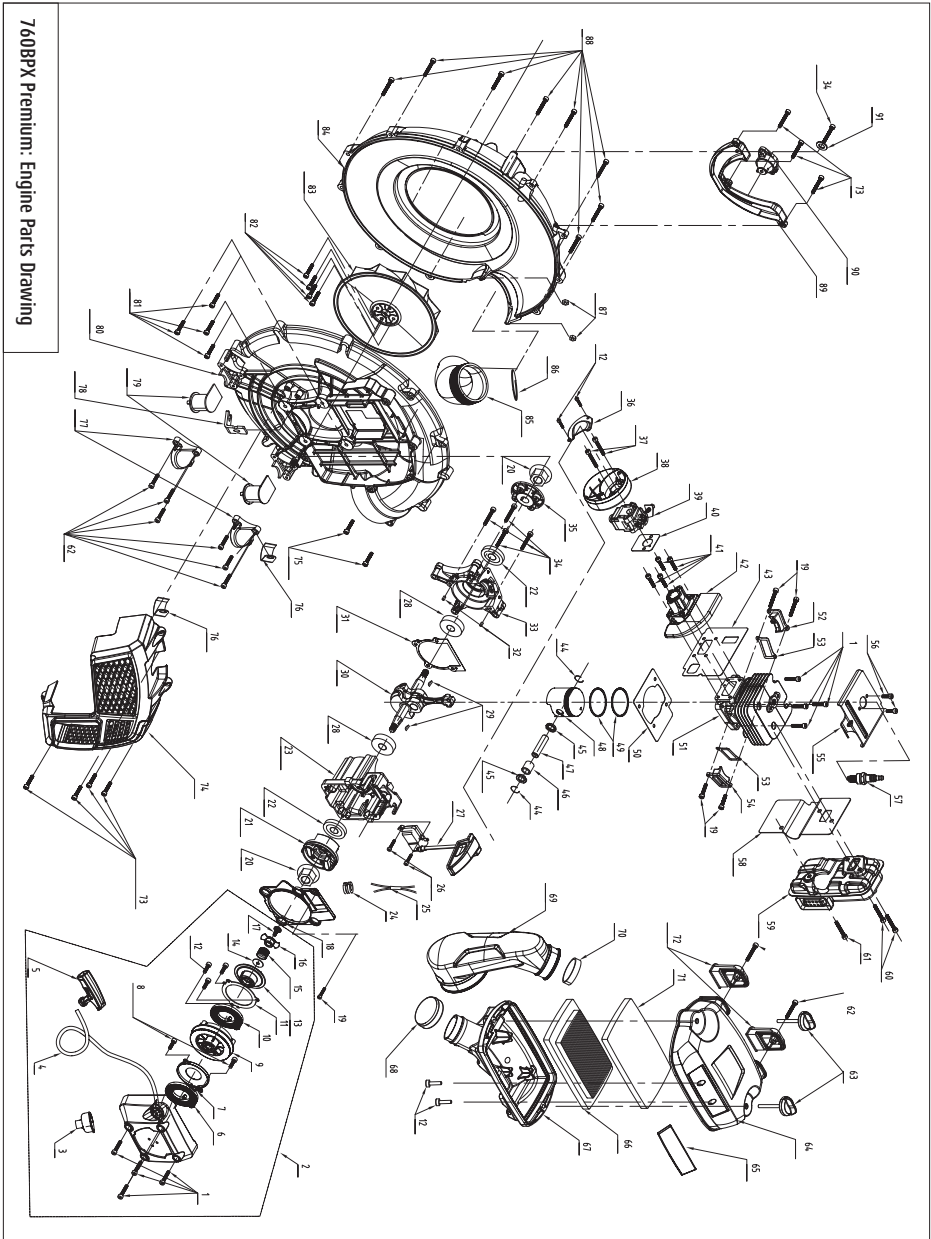
**7. Technical Specification**

| <b>Technical Data</b>                     | <b>Unit</b>       | <b>760BPX Premium</b> |
|---|-------------------|-----------------------|
| Capacity                                  | cm <sup>3</sup>   | 75.6                  |
| Power                                     | kW                | 3.1                   |
| Maximum Engine Rotation Speed             | min <sup>-1</sup> | 7300                  |
| Spark Plug                                | -                 | Bosch USR7AC          |
| Mixture (Petrol : 2-Stroke Oil)           | -                 | 40:1                  |
| Fuel Tank Capacity                        | ml                | 2100                  |
| Acoustic Power Level Guaranteed           | dB (A)            | 112                   |
| Vibration Level                           | m/s <sup>2</sup>  | 2.02                  |
| Measurement Uncertainty                   | m/s <sup>2</sup>  | 1.5                   |
| Weight (with all accessories, empty tank) | Kg                | 11.6                  |
| Air Flow (Volume)                         | m <sup>3</sup> /h | 1500                  |
| Maximum Air Speed                         | mph               | 205                   |
| Length (without tube)                     | mm                | 535                   |
| Width (without tube)                      | mm                | 350                   |
| Height (without tube)                     | mm                | 545                   |



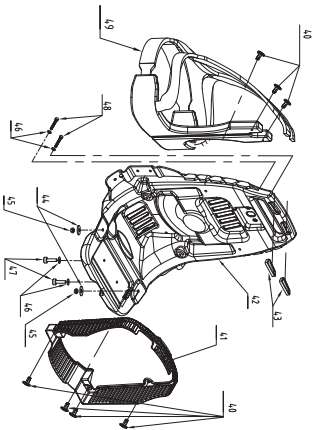
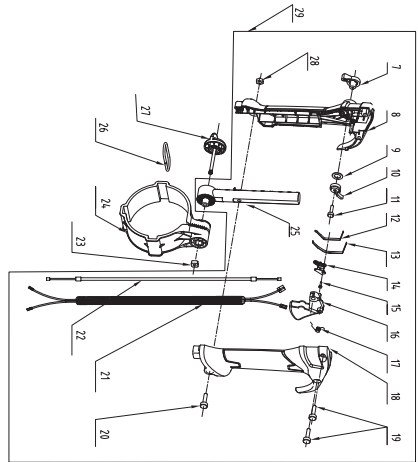
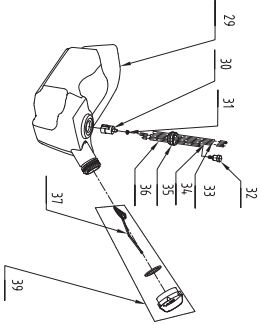
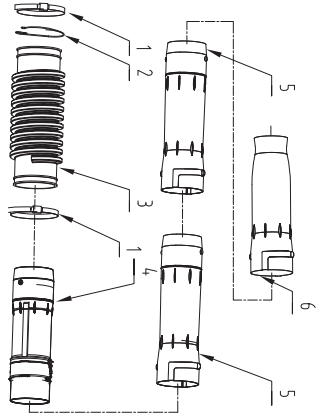


**8. Notes**



| ID No. | Drawing Number        | Description             | QTY |
|--------|-----------------------|-------------------------|-----|
| 1      | MIA41.0700.0008       | SCREW MSX25             | 8   |
| 2      | MIF76.0100.0000       | RECOIL STARTER ASSY     | 1   |
| 3      | MIA25.0110.0101       | ROPE GUIDE              | 1   |
| 4      | MIC43.1110.0001       | STARTER ROPE            | 1   |
| 5      | MIA62.0110.0002       | STARTER HANDLE          | 1   |
| 6      | MIF76.0110.0012       | RECOIL SPRING           | 1   |
| 7      | MIF76.0110.0005       | SPRING COVER            | 1   |
| 8      | MIGB/T845 ST3.5X6     | TAPPING SCREW ST3.5X6   | 2   |
| 9      | MIF76.0110.0003       | RECOIL PULLEY           | 1   |
| 10     | MIF76.0110.0011       | TENSION SPRING          | 1   |
| 11     | MIF76.0110.0009       | TENSION SPRING COVER    | 1   |
| 12     | MIF76.0104.0002       | TAPPING SCREW ST4.2X9.5 | 5   |
| 13     | MIF76.0110.0004       | RATCHET WHEEL           | 1   |
| 14     | MIF76.0110.0006       | WASHER 5.5X20X1         | 1   |
| 15     | MIF76.0110.0007       | PRESSURE SPRING         | 1   |
| 16     | MIF76.0110.0008       | RETAINER                | 1   |
| 17     | MIF76.0110.0010       | SCREW                   | 1   |
| 18     | MIF76.0101.0020       | IGNITION COVER          | 1   |
| 19     | MIGB/T2672 M4X12      | SCREW M4X12             | 5   |
| 20     | MIGB/T6177.2 M10X1.25 | NUT M10X1.25            | 2   |
| 21     | MIF76.0106.0200       | STARTER RATCHET         | 1   |
| 22     | MIC43.0101.0300       | SEAL 15X30X7            | 2   |
| 23     | MIF76.0102.0001       | FRONT CRANKCASE         | 1   |
| 24     | MIF76.0106.0104       | SLEEVE                  | 1   |
| 25     | MIF76.0106.0105       | IGNITION WIRES          | 1   |
| 26     | MIGB/T2672 M4X16      | SCREW M4X16             | 2   |
| 27     | MIF76.0106.0102       | IGNITION COIL           | 1   |
| 28     | MIGB/T276 6302        | BEARING 6302            | 2   |
| 29     | MIGB/T1099 3XSX13     | KEY 3XSX13              | 2   |
| 30     | MIF76.0103.0100       | CRANKSHAFT              | 1   |
| 31     | MIF76.0102.0003       | CRANKCASE GASKET        | 1   |
| 32     | MIGB/T119 B5X10       | PIN B5X10               | 2   |
| 33     | MIF76.0102.0002       | REAR CRANKCASE          | 1   |
| 34     | MIF76.0101.0018       | SCREW MSX35             | 5   |
| 35     | MIF76.0101.0010       | IMPELLOR BOSS           | 1   |
| 36     | MIF76.0104.0001       | BAFFLE PLATE            | 1   |
| 37     | MIF76.0101.0015       | SCREW MSX57             | 2   |
| 38     | MIF76.0104.0100       | AIR INTAKE DUCT BASE    | 1   |
| 39     | MIF76.0101.0200       | CARBURETTOR             | 1   |
| 40     | MIF76.0101.0008       | CARBURETTOR GASKET      | 1   |
| 41     | MIA41.0700.0008       | SCREW MSX30             | 4   |
| 42     | MIF76.0101.0100       | AIR INTAKE MANIFOLD     | 1   |
| 43     | MIF76.0101.0007       | AIR INTAKE GASKET       | 1   |
| 44     | MIF76.0103.0004       | PISTON PIN CIRCLIP      | 2   |
| 45     | MIF76.0103.0005       | RETAINING RING          | 2   |

| ID No. | Drawing Number       | Description             | QTY |
|--------|----------------------|-------------------------|-----|
| 46     | MIF76.0103.0006      | NEEDLE BEARING 12X16X15 | 1   |
| 47     | MIF76.0103.0003      | PISTON PIN              | 1   |
| 48     | MIF76.0103.0001      | PISTON                  | 1   |
| 49     | MIF76.0103.0002      | PISTON RING             | 2   |
| 50     | MIF76.0101.0005      | CYLINDER GASKET         | 1   |
| 51     | MIF76.0101.0019      | CYLINDER                | 1   |
| 52     | MIF76.0101.0003      | CYLINDER PLUG - REAR    | 1   |
| 53     | MIF76.0101.0004      | PLUG GASKET             | 2   |
| 54     | MIF76.0101.0002      | CYLINDER PLUG - FRONT   | 1   |
| 55     | MIF76.0101.0006      | AIR FLOW GUIDE          | 1   |
| 56     | MIF76.0101.0014      | SCREW MSX10             | 2   |
| 57     | MIO2.35.93           | SPARK PLUG              | 1   |
| 58     | MIF76.0101.0009      | MUFFLER GASKET          | 1   |
| 59     | MIF76.0105.0100      | MUFFLER                 | 1   |
| 60     | MIF76.0101.0016      | SCREW M6X25-10.9        | 2   |
| 61     | MIF76.0101.0017      | SCREW M6X20-10.9        | 1   |
| 62     | MIO1.01.3201         | TAPPING SCREW ST5.0X19  | 8   |
| 63     | MIF76.0104.0300      | HANDWHEEL               | 2   |
| 64     | MIF76.0104.0006      | AIR FILTER COVER        | 1   |
| 65     | MIF76.0104.0018      | PLATE                   | 1   |
| 66     | MIF76.0104.0004      | PAPER FILTER            | 1   |
| 67     | MIF76.0104.0200      | AIR FILTER CHAMBER      | 1   |
| 68     | MIF76.0104.0010      | CLAMP(80-100)           | 1   |
| 69     | MIF76.0104.0003      | AIR INTAKE DUCT         | 1   |
| 70     | MIF76.0104.0009      | CLAMP(44-64)            | 1   |
| 71     | MIF76.0104.0005      | SPONGE FILTER           | 1   |
| 72     | MIF76.0104.0007      | AIR INTAKE              | 2   |
| 73     | MIO1.01.3201         | TAPPING SCREW ST5.0X16  | 7   |
| 74     | MIF76.0201.0011      | ENGINE COVER            | 1   |
| 75     | MIF76.0111.0003      | SCREW MSX70             | 2   |
| 76     | MIB25.5100.0100      | THROTTLE CABLE CLIP     | 2   |
| 77     | MIF76.0111.0002      | CAP                     | 2   |
| 78     | MIF76.0111.0005      | THROTTLE CABLE BRACKET  | 1   |
| 79     | MIF76.0111.0500      | ANTI-VIBRATION RUBBER   | 2   |
| 80     | MIF76.0111.0400      | VOLUTE CASE - INNER     | 1   |
| 81     | MIF76.0101.0018      | SCREW M6X45             | 4   |
| 82     | MIF76.0101.0016      | SCREW M6X25-10.9        | 4   |
| 83     | MIF76.0111.0600      | IMPELLOR                | 1   |
| 84     | MIF76.0111.0100      | VOLUTE CASE - OUTER     | 1   |
| 85     | MIF76.0111.0004      | PIPE - ELBOW            | 1   |
| 86     | MIGB/T3452.1 100X3.1 | O RING 100X3.1          | 1   |
| 87     | MIGB/T56 M5          | NUT M5                  | 2   |
| 88     | MIO2.01.3135         | TAPPING SCREW ST5.0X25  | 8   |
| 89     | MIF76.0111.0001      | TUBE                    | 1   |
| 90     | MIF76.0111.0200      | ANTI-VIBRATION RUBBER   | 1   |
| 91     | MIF76.0111.0300      | WASHER                  | 1   |



760BPX Premium Hose / Handle Parts Drawing



| ID No. | Drawing Number    | Description            | QTY |
|--------|-------------------|------------------------|-----|
| 1      | MIF76.0114.0005   | CLAMP(100-120)         | 2   |
| 2      | MIF76.0101.0021   | CLIP                   | 1   |
| 3      | MIF76.0114.0002   | FLEXIBLE HOSE          | 1   |
| 4      | MIF76.0114.0100   | REAR TUBE              | 1   |
| 5      | MIF76.0114.0003   | INTERMEDIATE TUBE      | 2   |
| 6      | MIF76.0114.0004   | NOZZLE                 | 1   |
| 7      | MIF76.0112.0005   | THRITTLE KNOB          | 1   |
| 8      | MIF76.0112.0100   | LEFT COVER             | 1   |
| 9      | MIGB/T755 M10     | SPRING WASHER 10       | 1   |
| 10     | MIF76.0112.0004   | THRITTLE LEVER         | 1   |
| 11     | MIGB6564 4X16     | SCREWS ST4X16          | 1   |
| 12     | MIF76.0112.0008   | LEAF SPRING A          | 1   |
| 13     | MIF76.0112.0009   | LEAF SPRING B          | 1   |
| 14     | MIF76.0112.0007   | PLATE                  | 1   |
| 15     | MIGB/T845 ST3.5X6 | TAPPING SCREWS ST3.5X6 | 1   |
| 16     | MIF76.0112.0006   | THRITTLE TRIGGER       | 1   |
| 17     | MIF76.0112.0010   | TRIGGER SPRING         | 1   |
| 18     | MIF76.0112.0200   | RIGHT COVER            | 1   |
| 19     | MIGB/T6564        | TAPPING SCREWS ST5.5X6 | 2   |
| 20     | MIF76.0112.0011   | SCREW M5X35            | 1   |
| 21     | MIF76.0112.0300   | EARTH WIRE ASSY        | 1   |
| 22     | MIF76.0112.0400   | THRITTLE CABLE         | 1   |
| 23     | MIGB/T39 M5       | SQUARE NUT M5          | 1   |
| 24     | MIF76.0112.0002   | FIXING RING            | 1   |
| 25     | MIF76.0112.0001   | HANDLE STEM            | 1   |
| 26     | MIF76.0112.0003   | SHACKLE                | 1   |
| 27     | MIF76.0104.0300   | LOCK KNOB              | 1   |
| 28     | MIGB/T56 M5       | NUT M5                 | 1   |
| 29     | MI12.01.1022      | THRITTLE ASSY          | 1   |
| 30     | MIF76.0107.0100   | FUEL TANK              | 1   |
| 31     | MIA38.0311.0500   | FUEL FILTER            | 1   |
| 32     | MIA45.0102.0103   | FUEL HOSE CIRCLIP      | 1   |
| 33     | MIA45.0111.0200   | VENT VALVE             | 1   |
| 34     | MI03.01.153       | RETURN FUEL HOSE       | 1   |
| 35     | MI03.01.132       | FUEL HOSE              | 1   |
| 36     | MIC43.1107.0003   | FUEL HOSE SEAT         | 1   |
| 37     | MI03.01.153       | VENT FUEL HOSE         | 1   |
| 38     | MIC43.1107.0102   | RETAINER               | 1   |
| 39     | MIC43.1107.0100   | CAP ASSY               | 1   |
| 40     | MIF76.0116.0100   | PUSH FIXING            | 7   |
| 41     | MIF76.0116.0002   | GUARD                  | 1   |
| 42     | MIF76.0116.0001   | SUPPORT                | 1   |
| 43     | MIF76.0116.0003   | HARNESS RETAINER       | 2   |
| 44     | MIGB/T96.1 M6     | WASHER M6              | 2   |
| 45     | MIGB/T6177.1 M6   | NUT M6                 | 2   |

| ID No. | Drawing Number  | Description | QTY |
|--------|-----------------|-------------|-----|
| 46     | MIGB/T96 M5     | WASHER M5   | 4   |
| 47     | MIF76.0101.0014 | SCREW M5x10 | 2   |
| 48     | MIF76.0101.0013 | SCREW M5x20 | 2   |
| 49     | MIF76.0116.0400 | HARNESS     | 1   |

760BPX Premium Decal Drawings

| ID No. | Drawing Number  | Description            | QTY |
|--------|-----------------|------------------------|-----|
| 1      | MIDECAL760BPX/1 | RECOIL DECAL - 760BPX  | 1   |
| 2      | MIDECAL760BPX/2 | AIR FILTER COVER DECAL | 1   |
| 3      | MIDECAL760BPX/3 | SAFETY DECAL - 760BPX  | 1   |
| 4      | MIDECAL760BPX/4 | CHOKE DECAL - 760BPX   | 1   |

# EC Declaration of Conformity

We Mitox (Rochford Garden Machinery Ltd) - BA9 9RS (importer) declare that the product(s):

**Designation:** Petrol Powered Garden Blower (BackPack Powered Unit)  
**Model(s):** MITOX 760BPX PREMIUM  
**Type/Serial No:** As per rating label on machine

**Complies with the following directive(s):**

2006/42/EC Machinery Directive  
2014/30/EU EMC Directive  
97/68/EC Directive as last amended by 2012/46/EU NRMM  
2000/14/EC and 2005/88/EC Noise Directive for outdoor equipment use

**The conformity assessment procedure followed was in accordance with:**

EN ISO 15503:2009+A2:2015  
EN ISO 14982:2009

**Notified Body:**

Intertek Testing Services

**Address:**

Building No. 86, 1198 Qinzhou Road (North) Shanghai 200233, China

**Measured Sound Power Level:** 108.9 dB (A)  
**Guaranteed Sound Power Level:** 112 dB (A)

**Authorised Signatory and Technical File Holder**

**Date:** 18/05/2016

**Signature:**



**Name:** Stewart Anderson  
**Position:** Managing Director  
**Company:** Mitox (Rochford Garden Machinery Ltd)  
**Address:** Wincanton Business Park  
Wincanton  
Somerset  
BA9 9RS



**CONDITIONS OF WARRANTY**

The manufacturer warrants the product against faulty materials and workmanship for a standard 1 year period and thereafter for the set period specific to each range from the date of purchase. Warranty does not extend to failure due to fair wear and tear.

- SP** - 1 Year
  - SELECT** - 3 Years (Subject to yearly servicing)
  - PREMIUM** - 5 Years (Subject to yearly servicing)
  - PRO** - 5 Years Domestic / 3 Years Commercial (Subject to yearly servicing)
- (Extended warranty is subject to online registration and yearly servicing)*

SP, SELECT and PREMIUM ranges used for commercial purposes have a warranty period of 3 months from the date of purchase.

The manufacturer undertakes to replace, any spare parts that are classified as defective by an appointed Mitox service dealer. The manufacturer will not accept liability for the replacement of the machine, either partially or wholly, and /or consequential damages and /or interest charges either directly or indirectly.

**Warranty does not cover failure due to:**

- Insufficient maintenance.
- Incorrect fuel mixture and stale fuel.
- Abnormal use or accidental damage.
- Incorrect assembly, adjustment or operation of the product.
- Spare parts that are subject to wear e.g. bag, blades, bearings, cables, guards, deflectors, spark plugs, air filters etc.

**Neither does warranty extend to:**

- Freight and packing costs.
- Use of non-genuine spare parts i.e. those from another manufacturer.
- Use of the machine for any other purpose than that for which it was designed.
- Use and maintenance of the machine in a manner not described in the owner's manual.

As part of our policy of continuous product improvement, we reserve the right to alter or amend this specification without notice. As a result, the product may differ from the information contained herein but any alteration will only be implemented without notice if it is classified as an improvement to the above specification.

**READ THE MANUAL CAREFULLY BEFORE OPERATING THE MACHINE**

When ordering spare parts, please quote the part number, this can be found in the parts list included in this manual.

Retain your proof of purchase, without which no warranty can be offered.

**Mitox Garden Machinery**, Wincanton Business Park, Wincanton, Somerset, BA9 9RS