

## ***Operator's Manual***

user manual, maintenance instructions and spare parts

***LS40 / LS65x Electric Logsplitter***



Read this manual carefully before operating the machine

Original Instructions Version August 17

## SAFETY WARNINGS & EXPLANATION OF SYMBOLS ON THE MACHINE

### UNDERSTAND YOUR LOG SPLITTER

Read and understand the owner's manual and labels affixed to the log splitter. Learn its application and limitations as well as the specific potential hazards peculiar to it.

### DRUGS, ALCOHOL AND MEDICATION

Do not operate the log splitter while under the influence of drugs, alcohol, or any medication that could affect your ability to use it properly.

### AVOID DANGEROUS CONDITIONS

Always operate your log splitter on a 60 - 75cm high, stable, flat and level work bench, or on the optional work stand. Never operate your log splitter on slippery, wet, muddy, or icy surfaces. Keep your work area clean and well lit. Cluttered areas invite injuries. Do not use the log splitter in wet or damp areas or expose it to rain. Do not use it in areas where fumes from paint, solvents or flammable liquids pose a potential hazard.

### INSPECT YOUR LOG SPLITTER

Check your log splitter before turning it on. Keep guards in place and in working order. Replace damaged, missing or failed parts before using it. Make sure all nuts, bolts, screws, hydraulic fittings, hose clamps, etc. are securely tightened. Always check the oil level in the hydraulic oil tank. Never operate your log splitter when it is in need of repair or is in poor mechanical condition.

### WORK WEAR

Do not wear loose clothing, neckties or jewellery (rings, wrist watches). They can be caught in moving parts. Protective gloves and safety footwear are recommended when working. Wear protective hair covering to contain long hair, preventing it from getting caught in machinery.

### PROTECT YOUR EYES AND FACE

Any log splitter may throw foreign objects into the eyes. This can cause permanent eye damage. Always wear safety goggles. Everyday eyeglasses have only impact resistant lenses. They are not safety glasses. **Do not put the log splitter on the ground for operations. This is an awkward operating position whereby the operator has to bring his face close to the machine, and thus risks being struck by wood chips or debris.**

### EXTENSION CORDS

Only rubber cable complying with the H07RN-F quality standard stipulated in VDE 0282 Part 14 with a wire cross section of 2.5mm<sup>2</sup> should be used. The maximum permissible cable length is 10m. A longer cable may impair the motor performance and the function of the logsplitter. The connection cable, plug and socket should be free of damage. Repairs to the connection cable, plug and connection socket should only be carried out by a qualified electrician. A damaged connection cable should not be used. Plug connections should not be exposed to damp or water.

### AVOID ELECTRICAL SHOCK

Check that the electric circuit is adequately protected and that it corresponds with the power and voltage of the motor. Check that there is a ground connection. Never open the switch / plug box. Should this be necessary, contact a qualified electrician. Make sure your fingers do not touch the plug's metal prongs when plugging or unplugging the log splitter.



### **PREVENT FIRES**

Do not smoke or have open flames when operating or refilling the log splitter. Never operate the log splitter near a flame or spark. Oil is flammable and can be ignited.



### **KEEP BYSTANDERS AWAY**

Allow only one person to load and operate the log splitter. Always keep bystanders, including visitors, children and pets away from the work area, especially when the log splitter is under operations. Only the operator should stand near the machine and only within the safe operating area of 5 metres. Never use another person to help you with freeing a jammed log. No one under the age of 16 should be allowed to operate the log splitter. Any individual under the age of 18 should have the necessary training and skills to perform the functions properly and safely and should always be under the supervision of an adult.



### **INSPECT YOUR LOG**

Never attempt to split logs containing nails, wire or debris. Always make sure that both ends of the log you are splitting are cut as square as possible. This will prevent the log from sliding out of position while under pressure. Branches must be cut off flush with the trunk.

### **DON'T OVERREACH**

Keep a proper footing and balance at all times. Never stand on the log splitter. Serious injury could occur if the tool is tipped or if the cutting tool is unintentionally contacted. Do not store anything above or near the log splitter where anyone might stand on the tool to reach it.

### **AVOID INJURY FROM UNEXPECTED ACCIDENT**

Do not straddle or reach across the splitting area when operating the log splitter. Never pile logs to be split in a manner that will cause you to reach across the log splitter. Only use your hands to operate the control levers. Never use your foot, knee, a rope, or any other extension device. Always pay full attention to the movement of the wedge ram. Never attempt to load your log splitter while the ram is in motion. Keep hands out of the way of all moving parts. Never try to split two logs. One of them may fly up and hit you.



### **PROTECT YOUR HANDS**

When the ram of the log splitter is in the return mode, keep your hands off the machine – the log splitter is designed to automatically stop when the cylinder is fully retracted. Keep your hands away from splits and cracks which open in the log. They may close suddenly and crush or injure your hands.

### **INCORRECT USE**

Do not use the log splitter for a purpose for which it was not intended. Do not, under any circumstances, alter your log splitter. This equipment was designed and engineered to be used in accordance with the operating instructions. Altering the equipment, or using the equipment in such a way as to circumvent its design capabilities and capacities, could result in serious or fatal injury and will void the warranty. Never try to split logs larger than those indicated in the specifications table. This could be dangerous and may damage the machine.

### **NEVER LEAVE THE LOG SPLITTER RUNNING UNATTENDED**

Don't leave the tool until it has come to a complete stop.

### **DISCONNECT POWER**

Unplug the log splitter when not in use, before making adjustments, changing parts, cleaning or working on the log splitter. Consult your local Mitox dealer before servicing.



**PROTECT THE ENVIRONMENT**

Take used oil to an authorized collection point or follow the stipulations in the country where the log splitter is used. Do not discharge into drains, soil or water.

**MAINTAIN YOUR LOG SPLITTER WITH CARE**

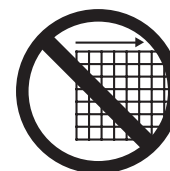
Always clean the unit after each use. Keep the log splitter clean for best and safest performance. Follow instructions for lubricating. Inspect all hydraulic seals, hoses and couplers for leaks prior to use. Control levers and power switch must be kept clean, dry and free from oil and grease at all times.

**MAKE THE WORKSHOP CHILDPROOF**

Lock the workshop or garage. Store the log splitter away from children and others not qualified to use it.

**FOR YOUR SAFETY**

Do not remove or tamper with any of the machine's protection or safety devices or modify the log splitter in any way.

**TABLE OF CONTENTS**

Safety Warnings & Cautions .....	2
Description of Product and Application Conditions.....	5
Specifications.....	5
Electrical Requirements .....	5
Set up and Preparation for Operation.....	6
Log Splitter Operation .....	7
4 Way Cross Splitter.....	7
Replacing Hydraulic Oil .....	8
Sharpening Wedge .....	8
Trouble Shooting .....	9
Wiring Diagram .....	9
Plumbing Diagram .....	9
Optional Workstand Assembly.....	10
Parts Schematic .....	11
Declaration of Conformity .....	16

## DESCRIPTION OF MACHINE



**The log splitter is designed to be used in a domestic application.**

**The log splitter is designed exclusively for the following applications:**

-Splitting freshly cut timber that does not exceed the dimensions specified in the technical data.

**The 4-way splitting cross is only to be used on freshly cut wood and not seasoned wood as this type of wood can splinter and put undue strain on the log splitter.**

## APPLICATION CONDITIONS

This log splitter is designed to operate under ambient temperatures between +5°C and 40°C. It can be stored or transported under ambient temperatures between -25°C and 55°C.

## SPECIFICATIONS

Model Number		LS40	LS65X
Motor		1500W	2200W
Log Capacity	Diameter	50 ~ 250mm	50 ~ 250mm
	Length	370mm	520mm
Maximum Force		4.5 Ton	6 Ton
Hydraulic Pressure		2320 PSI	3260PSI
Hydraulic Oil Capacity		2.4 L	3.5 L
Overall Sizes	Length	780mm	940mm
	Width	270mm	270mm
	Height	460mm	510mm
Weight		40.5kg	54.3kg

\* The diameter of the log is a guide - a small log can be difficult to split when it has knots or a particularly tough fibre. On the other hand, it may not be difficult to split logs with regular fibres even if their diameter exceeds the max. figure indicated above.

## ELECTRICAL REQUIREMENTS

With a 230 Volt / 50Hz motor, the log splitter should be connected to a standard 230V+10% / 50Hz+1Hz. electrical supply as well as a residual current device (RCD) with the maximum residual current Rated at 0.03A.

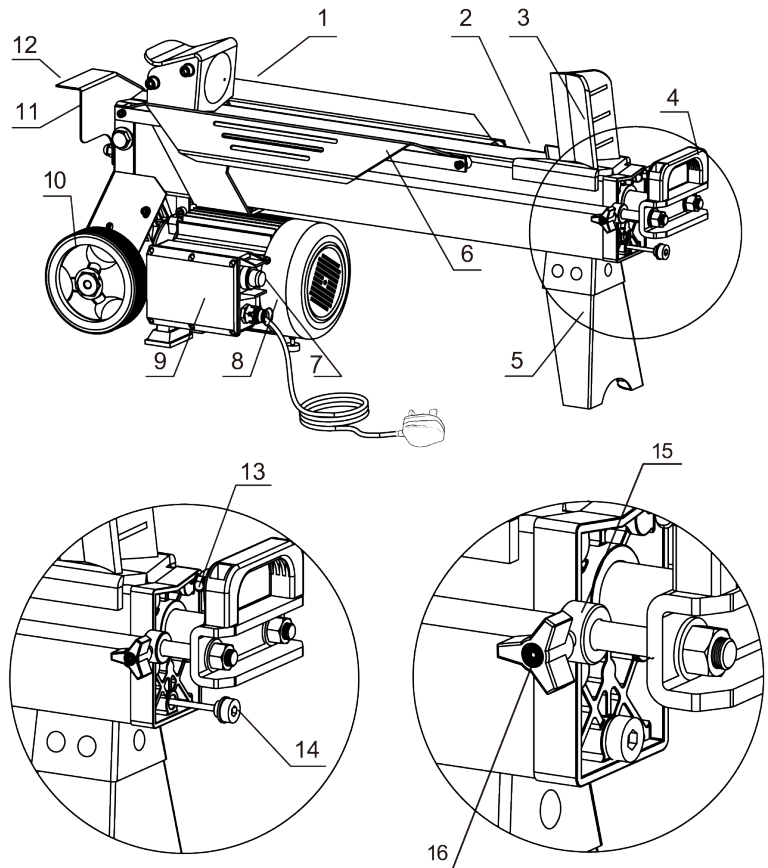
### **\*\*PLEASE NOTE\*\***

The max splitting force can vary by +/- 10%

## SET UP AND PREPARATION FOR OPERATION

1. Bolt the Support Leg to the Log Splitter, lift the log splitter by the handles at both ends and place it on a 60 - 75cm high, stable, flat and level work surface, or on the optional work stand.
2. Familiarize yourself with the controls and features of this log splitter in the illustrations.

1. Log Pusher
2. Work Table
3. Wedge
4. Lift Handle
5. Support Leg
6. Log Retaining Plates
7. Motor Control Switch
8. Motor
9. Pushbutton Box
10. Wheels for Minor Moving ONLY.
11. Hydraulic Control Lever
12. Control Lever Guard
13. Bleed Screw
14. Oil Drain Bolt w/ Dipstick
15. Quicksplit Stroke Limiter - Locking Collar
16. Quicksplit Stroke Limiter - Adjuster Screw

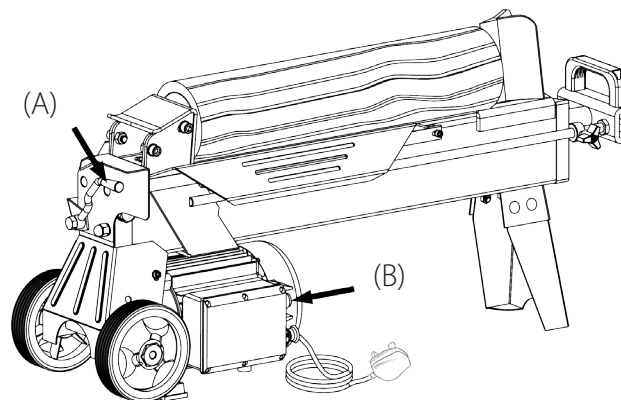


**Bleed the air out of the hydraulic system before starting the log splitter. The bleed screw of the hydraulic oil tank should be loosened by three rotations until air can go in and out of the oil tank smoothly. Air flow through the oil tank filler should be detectable during the operation of the log splitter. Before moving the log splitter, make sure the bleed screw is tightened to avoid oil leaking from this point.**



**THE FAILURE TO LOOSEN THE BLEED SCREW WILL RESULT IN DAMAGE TO THE SEALS OF THE HYDRAULIC SYSTEM AND CAUSE PERMANENT DAMAGE TO THE LOG SPLITTER.**

## LOG SPLITTER OPERATION



This log splitter is equipped with a control system that requires it to be operated by both hands of the user - Left hand controls the hydraulic control lever (A) while right hand controls the motor control switch (B). The log splitter will stop upon absence of either hand. Only after both hands release the controls, will the log pusher start to return backward to the starting position.

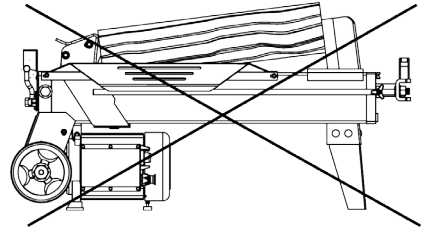


**Do not attempt to split seasoned logs. Green logs split much more easily, and will not put undue pressure on the splitter. Seasoned logs can also split violently, which can be dangerous to the operator.**



**If after 5 seconds the log splitter fails to split the log, remove the log and rotate the log by 90°. If the log splitter still fails to split the log then the log hardness exceeds the capacity of the log splitter and should be discarded to prevent damage to the machine.**

Always set logs firmly on the log retaining plates and work table. Make sure logs will not twist, rock or slip while being split. Do not force the blade by splitting the log on the upper part. This will break the blade or damage the machine.



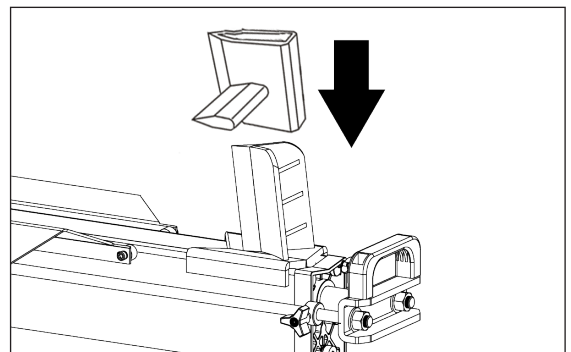
Split the log in the direction of its growing grain. Do not place a log across the log splitter for splitting. It may be dangerous and may seriously damage the machine. Do not attempt to split 2 logs at the same time. One of them may fly up and hit you.

#### OPTIONAL 4 WAY SPLITTING CROSS

Mount the 4 way splitting cross over the splitting wedge, ensuring that it is firmly secured.

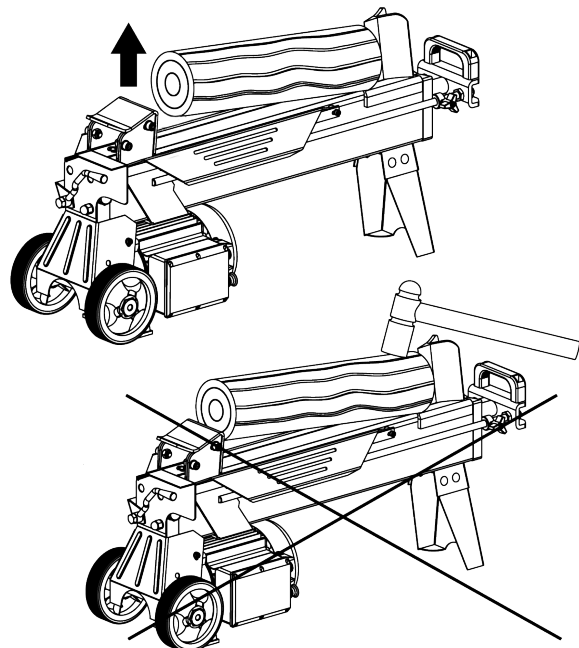


**The 4-way splitting cross is only to be used on freshly cut wood and not seasoned wood as this type of wood can splinter and put undue strain on the log splitter.**



#### FREEING A JAMMED LOG

- Release both controls.
- After the log pusher moves back and completely stops at its starting position, lift the log from the push block end to free it.
- **Do not use a hammer to try to knock the log free. This can damage the machine or release tension in the log causing an accident.**

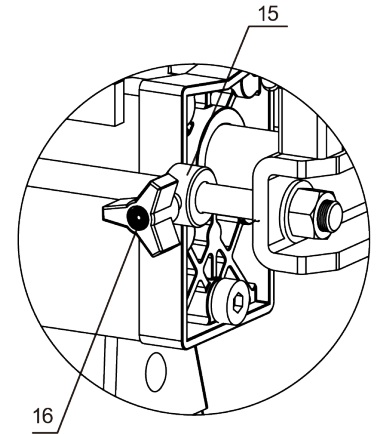




### QUICKSPLIT STROKE LIMITATION

You can limit the length of the splitting stroke, for example when splitting shorter lengths of wood. To use the stroke limiter:

1. Loosen the stroke limiting screw (16).
2. Position a piece of timber on the splitting table against the splitting wedge.
3. Press both the hydraulic control lever and motor control switch and move the push block until it is approximately 2cm from the timber.
4. Release the motor control switch and the splitting blade should remain stationary in this position.
5. Slide the locking collar (15) towards the frame of the splitter as shown until it is stopped by the frame.
6. Tighten the stroke limiting screw (16) and release the hydraulic control lever. The pushblock should remain in place.



### REPLACING HYDRAULIC OIL

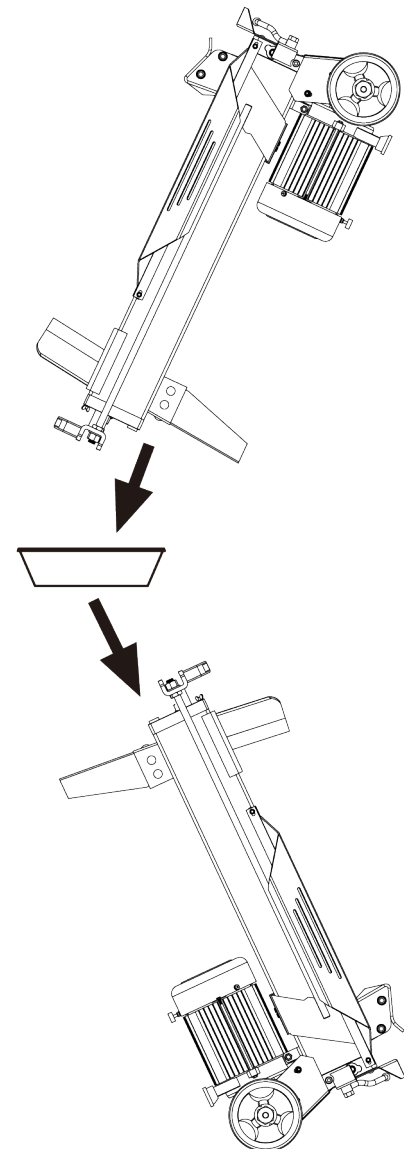
Replace the Hydraulic oil in the log splitter after every 150 hours of use. Take the following steps to replace it.

- Make sure all moving parts stop and the log splitter is unplugged.
- Unscrew the Oil Drain Bolt with Dipstick to remove it.
- Turn the log splitter on the Support Leg side using a 4 litre capacity container to drain the hydraulic oil off.
- Turn the log splitter on the the motor side.
- Refill with fresh HLP22 hydraulic oil to the volume as per the hydraulic oil capacity indicated in the specifications table.
- Clean the surface of the Dipstick on the Oil Drain Bolt and put it back into the oil tank while keeping the log splitter vertical.
- Make sure the level of the refilled oil is between the 2 grooves marked on the Dipstick.
- Clean the Oil Drain Bolt before screwing it back in. Make sure it is tightened to avoid leakage before placing the log splitter horizontally.

Periodically check the oil level to ensure it is between the 2 grooves marked on the Dipstick. Oil refilling is required if the oil level is low.

### SHARPENING WEDGE

This log splitter is equipped with a reinforced splitting wedge with a specially treated blade. After long periods of operation, and when required; sharpen the wedge using a fine-toothed file removing any burrs or flat spots on the edge.



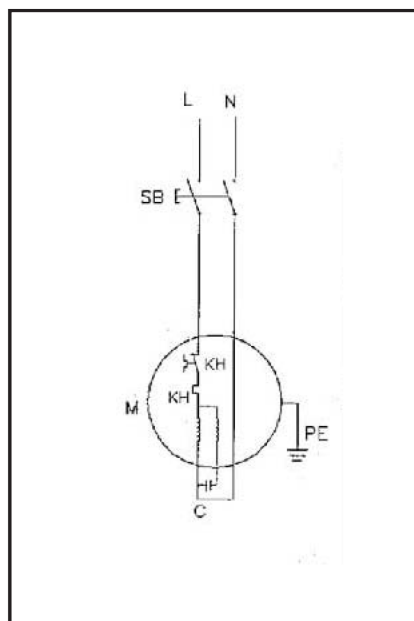


## TROUBLESHOOTING

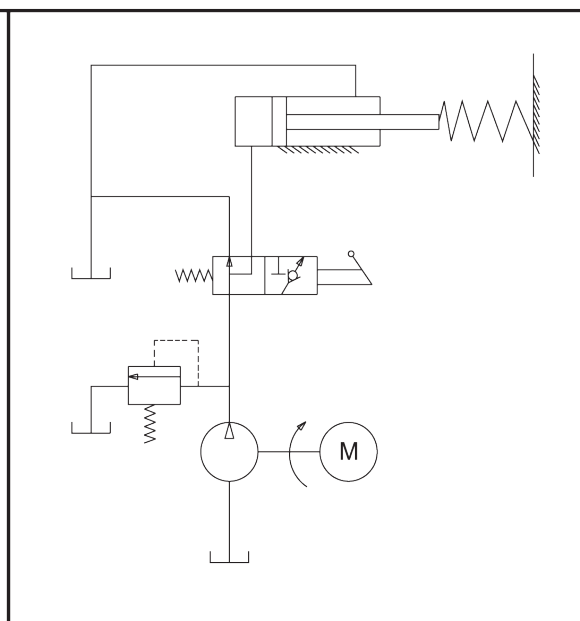
PROBLEM	PROBABLE CAUSE	REMEDY SUGGESTED
<b>Fails to split logs</b>	Log is improperly positioned	Refer to "Log Splitter Operation" section for perfect log loading
	The size or hardness of the log exceeds the capacity of the machine	Reduce the log size before splitting it on the log splitter
	Wedge cutting edge is blunt	Refer to "Sharpening Wedge" section to sharpen the cutting edge
	Oil leaks	Locate leak(s) and contact the dealer
<b>The log pusher moves jerkily, making unfamiliar noises or vibrating a lot.</b>	Lack of hydraulic oil and excessive air in the hydraulic system	Check oil level for possible oil refilling. Contact the dealer
<b>Oil leaks around cylinder ram or from other points.</b>	Air sealed in hydraulic system while operating	Loosen Bleed Screw by 3-4 rotations before operating the log splitter
	Bleed Screw is not tightened before moving the log splitter	Tighten the Bleed Screw up before moving the log splitter
	Oil Drain Bolt with Dipstick is not tight	Tighten the Oil Drain Bolt with Dipstick
	Hydraulic Control Valve Assembly and / or seal(s) worn	Contact your dealer

If the solutions above fail to resolve the problem or the machine is not safe to use then contact the supplying dealer.

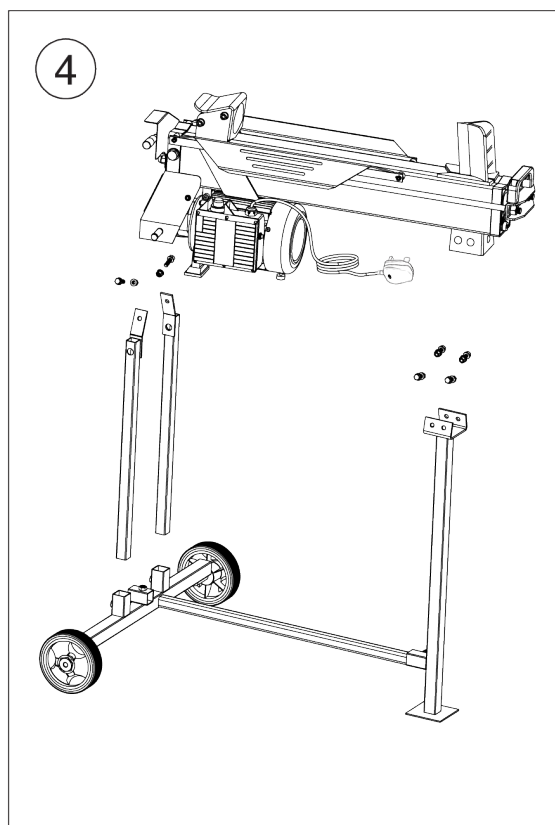
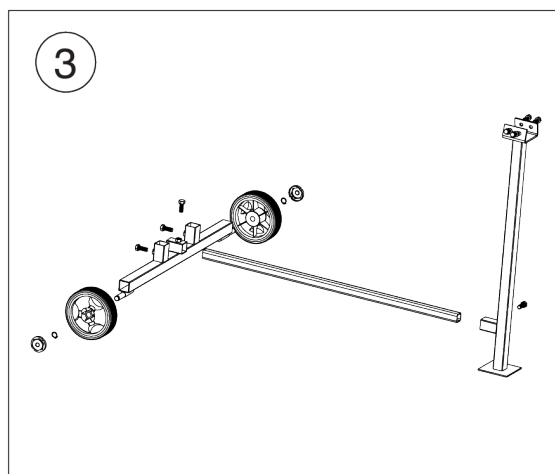
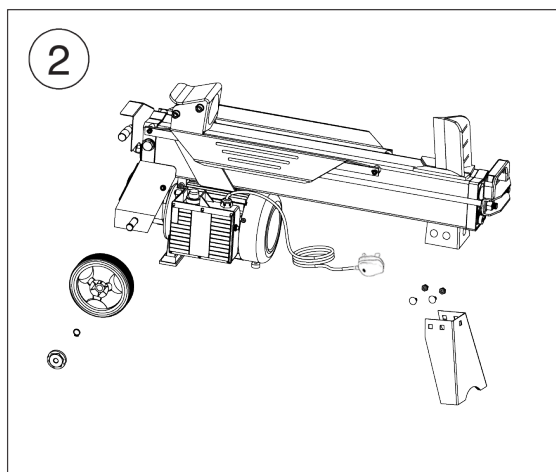
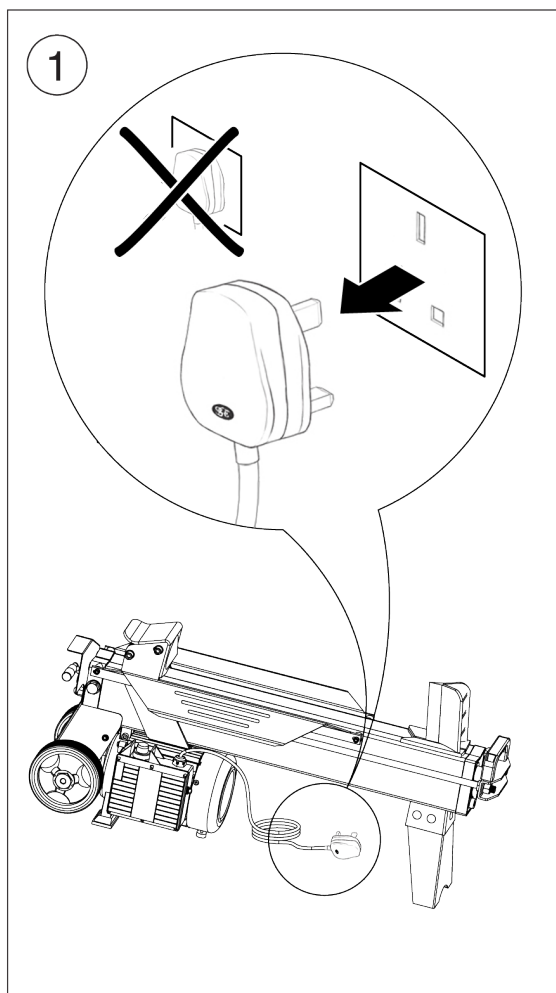
## WIRING DIAGRAM

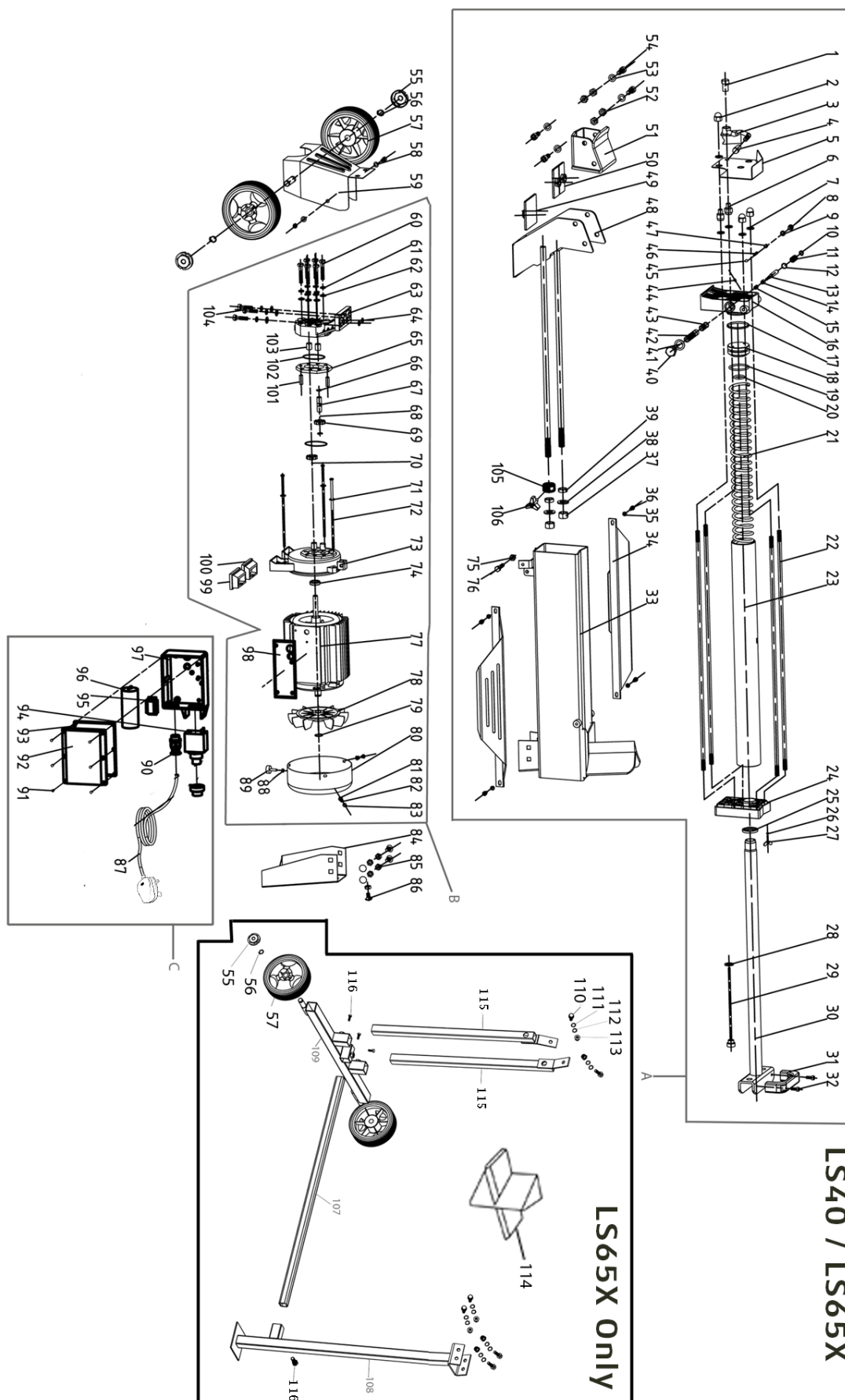


## HYDRAULIC DIAGRAM



**OPTIONAL WORK STAND ASSEMBLY**





ID	PART No	DESCRIPTION	QTY	LS40	LS65X
1	MILS45-01	LEVER NUT	1	Y	Y
2	MILS45-02	NUT CAP	3	Y	Y
3	MILS45-03	LEVER	1	Y	Y
4	MILS45-04	LEVER KNOB	1	Y	Y
5	MILS45-05	GUARD PLATE	1	Y	Y
6	MILS45-06	NUT	2	Y	Y
7	MILS45-07	COPPER GASKET	4	Y	Y
8	MILS45-08	SCREW	1	Y	Y
9	MILS45-09	O-RING	1	Y	Y
10	MILS45-10	SNAP WASHER – SHAFT	1	Y	Y
11	MILS45-11	VALVE RETRACT SPRING	1	Y	Y
12	MILS45-12	O-RING	1	Y	Y
13	MILS45-13	VALVE CORE ROD	1	Y	Y
14	MILS45-14	PRESSURE SENSOR SLEEVE	1	Y	Y
15	MILS45-15	SENSOR SLEEVE SPRING	1	Y	Y
16	MILS45-16	ALUMINIUM COVER (REAR)	1	Y	Y
17	MILS45-17	O-RING	1	Y	Y
18	MILS45-18	PISTON	1	Y	Y
19	MILS45-19	PISTON RING	1	Y	Y
20	MILS45-20	O-RING	1	Y	Y
21	MILS45-21	SPRING	1	Y	Y
22	MILS45-22	STUD	4	Y	Y
23	MILS45-23	HYDRAULIC CYLINDER	1	Y	Y
24	MILS45-24	ALUMINIUM COVER (FRONT)	1	Y	Y
25	MILS45-25	PISTON ROD SEAL	1	Y	Y
26	MILS45-26	O-RING	1	Y	Y
27	MILS45-27	WING BOLT	1	Y	Y
28	MILS45-28	WASHER	1	Y	Y
29	MILS45-29	DIPSTICK	1	Y	Y
30	MILS45-30	PISTON ROD	1	Y	Y
31	MILS45-31	LIFT HANDLE	1	Y	Y
32	MILS45-32	SCREW	2	Y	Y
33a	MILS45-33a	FRAME TUBE LS40	1	Y	N
33b	MILS45-33b	FRAME TUBE LS65X	1	N	Y
34	MILS45-34	SUPPORT	2	Y	Y
35	MILS45-35	SPRING WASHER	4	Y	Y
36	MILS45-36	SCREW	6	Y	Y
37	MILS45-37	NUT	2	Y	Y
38	MILS45-38	FLAT WASHER	2	Y	Y
39	MILS45-39	NUT	2	Y	Y
40	MILS45-40	NUT PLUG	1	Y	Y
41	MILS45-41	WASHER	1	Y	Y
42	MILS45-42	VALVE SLEEVE	1	Y	Y
43	MILS45-43	SPRING	5	Y	Y
44	MILS45-44	ADJUSTING SCREW	1	Y	Y

ID	PART No	DESCRIPTION	QTY	LS40	LS65X
45	MILS45-45	STEEL BALL	1	Y	Y
46	MILS45-46	PRESSURE LIMIT VALVE SPRING	1	Y	Y
47	MILS45-47	ADJUSTING SCREW	1	Y	Y
48	MILS45-48	LOG PUSHER SUPPORT	1	Y	Y
49	MILS45-49	PLASTIC INSERT (1)	1	Y	Y
50	MILS45-50	PLASTIC INSERT (2)	1	Y	Y
51	MILS45-51	LOG PUSHER	1	Y	Y
52	MILS45-52	NUT	4	Y	Y
53	MILS45-53	FLAT WASHER	5	Y	Y
54	MILS45-54	SCREW	4	Y	Y
55	MILS45-55	WHEEL COVER	2	Y	Y
56	MILS45-56	CIRCLIP	2	Y	Y
57	MILS45-57	WHEEL	2	Y	Y
58	MILS45-58	WASHER	2	Y	Y
59	MILS45-59	WHEEL SUPPORT	1	Y	Y
60	MILS45-60	BOLT	6	Y	Y
61	MILS45-61	SPRING WASHER	9	Y	Y
62	MILS45-62	WASHER	9	Y	Y
63	MILS45-63	GEAR PUMP COVER	1	Y	Y
64	MILS45-64	SPRING	2	Y	Y
65	MILS45-65	GEAR HOUSING PLATE	1	Y	Y
66	MILS45-66	CIRCLIP	2	Y	Y
67	MILS45-67	GEAR SHAFT	1	Y	Y
68	MILS45-68	STEEL BALL	1	Y	Y
69	MILS45-69	GEAR	2	Y	Y
70	MILS45-70	PIN	1	Y	Y
71	MILS45-71	WASHER	6	Y	Y
72	MILS45-72	BOLT	3	Y	Y
73	MILS45-73	MOTOR COVER	1	Y	Y
74	MILS45-74	SEAL	1	Y	Y
75	MILS45-75	NUT	1	Y	Y
76	MILS45-76	SCREW	1	Y	Y
77a	MILS45-77	MOTOR (1500w)	1	Y	N
77b	MILS50-77	MOTOR (2200w)	1	N	Y
78	MILS45-78	FAN	1	Y	Y
79	MILS45-79	CIRCLIP	1	Y	Y
80	MILS45-80	SHROUD	1	Y	Y
81	MILS45-81	FLAT WASHER	2	Y	Y
82	MILS45-82	SPRING WASHER	3	Y	Y
83	MILS45-83	SCREW	2	Y	Y
84	MILS45-84	LEG	1	Y	Y
85	MILS45-85	NUT	5	Y	Y
86	MILS45-86	BOLT	5	Y	Y
87	MILS45-87	CABLE & PLUG	1	Y	Y
88	MILS45-88	NUT	3	Y	Y

ID	PART No	DESCRIPTION	QTY	LS40	LS65X
89	MILS45-89	LOCK WASHER	1	Y	Y
90	MILS45-90	CLAMP	1	Y	Y
91	MILS45-91	SCREW	11	Y	Y
92	MILS45-92	SWITCH BOX COVER	1	Y	Y
93	MILS45-93	SEAL	1	Y	Y
94	MILS45-94	SWITCH	1	Y	Y
95	MILS45-95	WIRING BLOCK	1	Y	Y
96	MILS45-96	CAPACITOR	1	Y	Y
97	MILS45-97	SWITCH BOX	1	Y	Y
98	MILS45-98	SEAL	1	Y	Y
99	MILS45-99	MOTOR SUPPORT (L/H)	1	Y	Y
100	MILS45-100	MOTOR SUPPORT (R/H)	1	Y	Y
101	MILS45-101	PIN	2	Y	Y
102	MILS45-102	SPRING	2	Y	Y
103	MILS45-103	SLIDING SLEEVE	4	Y	Y
104	MILS45-104	BOLT	3	Y	Y
105	MILS45-105	ADJUSTING PLATE	1	Y	Y
106	MILS45-106	3-STAR SCREW	1	Y	Y
107	MILS55X-107	BRACE	1	Y	Y
108	MILS55X-108	SUPPORT - UPRIGHT	1	N	Y
109	MILS55X-109	AXLE	1	N	Y
110	MILS55X-110	BOLT	6	N	Y
111	MILS55X-111	FLAT WASHER	6	N	Y
112	MILS55X-112	SPRING WASHER	6	N	Y
113	MILS55X-113	NUT	6	N	Y
107	MILS30	CROSS WEDGE - 52CM	1	N	Y
115	MILS55X-115	SUPPORT BEAM	2	N	Y
116	MILS55X-116	BOLT	4	N	Y
A	MILS45/55-A	BEAM ASSY- 52CM	5	Y	Y
B	MILS45-B	MOTOR ASSY (1500w)	1	Y	N
	MILS55-B	MOTOR ASSY (2200w)	1	N	Y
C	MILS45/55-C	SWITCH	1	Y	Y











For more information on the Mitox<sup>®</sup> range of garden products please visit our website:

[\*\*www.mitox.co.uk\*\*](http://www.mitox.co.uk)

### **CONDITIONS OF WARRANTY**

The manufacturer warrants the product against faulty materials and workmanship for a standard 1 year period and thereafter for the set period specific to each range from the date of purchase. Warranty does not extend to failure due to fair wear and tear.

<b>SP</b>	- 1 Year
<b>SELECT</b>	- 3 Years (Subject to yearly servicing)
<b>PREMIUM</b>	- 5 Years (Subject to yearly servicing)
<b>PRO</b>	- 5 Years Domestic / 3 Years Commercial (Subject to yearly servicing)

*(Extended warranty is subject to online registration and yearly servicing)*

SP, SELECT and PREMIUM ranges used for commercial purposes have a warranty period of 3 months from the date of purchase.

The manufacturer undertakes to replace any spare parts that are classified as defective by an appointed Mitox service dealer. The manufacturer will not accept liability for the replacement of the machine, either partially or wholly, and /or consequential damages and /or interest charges either directly or indirectly.

### **Warranty does not cover failure due to:**

Insufficient maintenance.  
Incorrect fuel mixture and stale fuel.  
Abnormal use or accidental damage.  
Incorrect assembly, adjustment or operation of the product.  
Spare parts that are subject to wear e.g. bag, blades, bearings, cables, guards, deflectors, spark plugs, air filters etc.

### **Neither does warranty extend to:**

Freight and packing costs.  
Use of non-genuine spare parts i.e. those from another manufacturer.  
Use of the machine for any other purpose than that for which it was designed.  
Use and maintenance of the machine in a manner not described in the owner's manual.

As part of our policy of continuous product improvement, we reserve the right to alter or amend this specification without notice. As a result, the product may differ from the information contained herein but any alteration will only be implemented without notice if it is classified as an improvement to the above specification.

### **READ THE MANUAL CAREFULLY BEFORE OPERATING THE MACHINE**

When ordering spare parts, please quote the part number, this can be found in the parts list included in this manual.

Retain your proof of purchase, without which no warranty can be offered.

Mitox Garden Machinery, Wincanton Business Park, Wincanton, Somerset, BA9 9RS