



26cc Loop Handle
Petrol Brush Cutter

WEBC26

193866001

33cc Cow Horn Handle
Petrol Brush Cutter

WEBC33

193871001

43cc Cow Horn Handle
Petrol Brush Cutter

WEBC43

193872001

Operator's Manual & Parts List

Please read & understand this manual, paying particular attention to the safety instructions, before use.
The manufacturer reserves the right to change the product specification and livery according to continued product improvements.

20 Nov 2015







CONTENTS

SAFETY INSTRUCTIONS

SPECIFICATIONS

COMPONENTS

ASSEMBLY

OPERATION

MAINTENANCE, CLEANING & STORAGE

TROUBLE SHOOTING

PARTS DIAGRAM & LIST

WARRANTY

DECLARATION OF CONFORMITY

For Spares or Support of your Webb product, please contact us:

Tel: 01793 333212

(Mon – Fri 8.30am to 5.00pm)

Email: customerservice@webblawnmowers.co.uk

To view the full range or find out more information go to








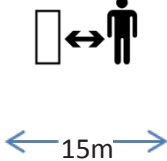






www.webblawnmowers.co.uk



INSTRUCTION MANUAL

SAFETY INSTRUCTIONS

Read and understand the owner's manual and labels affixed to the machine. Learn its application and limitations as well as the specific potential hazards. Retain these instructions for future reference. The operator is responsible for following the warnings & instructions in this manual and on the product.

	Read & understand operator's manual before using the machine. Failure to follow instructions could result in death or serious injury.		This graphic and when accompanied by WARNING or DANGER , calls attention to actions which could lead to SERIOUS INJURY
	Always wear eye and ear protection		Always TURN OFF THE ENGINE , ensuring the cutting tool has stopped, before cleaning, removing or adjusting the blade.
	Always wear gloves to protect your hands. SHARP ROTATING BLADES		Wear foot protection or sensible shoes when using the machine
	WARNING Never modify a machine in any way. Incorrect use of a machine can cause SERIOUS OR FATAL PERSONAL INJURY		Keep all bystanders & animals at least 15 metres away from the machine during operation. If approached, stop the machine immediately.
	No smoking		Risk of Carbon Monoxide Poisoning. Ensure working area is correctly ventilated.
	Do not use near a flame, or sparks		Fire Risk Fire and its vapors are extremely flammable & explosive. Fire or explosion can cause severe burns or death.
	Moving Parts Rotating parts can contact or entangle hands, feet, hair, clothing or accessories. Traumatic amputation or severe laceration can result		Hot Surface. Running engines produce heat. Engine parts, especially the exhaust, become extremely hot. Severe thermal burns can occur on contact



Safety alert symbol. Used to alert you to potential personal injury hazards. Obey all safety messages that follow this symbol to avoid possible injury.



DANGER

Indicates an imminently hazardous situation which, if not avoided, will result in serious injury.



WARNING

Indicates a potentially hazardous situation which, if not avoided, could result in serious injury



CAUTION

Indicates a potentially hazardous situation which, if not avoided, may result in minor or moderate injury.

CAUTION

Used without the safety alert symbol indicates a potentially hazardous situation which, if not avoided, may result in property damage.



STAY ALERT

Do not operate the machine while under the influence of drugs, alcohol, or any medication that could affect your ability to use it properly. Do not use this machine when you are tired or distracted from the job at hand. Be aware of what you are doing at all times. Use common sense.

AVOID DANGEROUS CONDITIONS

Make sure there is adequate surrounding workspace. Cluttered areas invite injuries.

Keep your work area clean with sufficient light. Keep area around the machine clear of obstructions, stones, sticks, wires and other debris or foreign bodies which could cause damage to the machine.

DO NOT SMOKE, whilst using the machine.

INSPECT YOUR MACHINE

Check all bolts, nuts, and screws for tightness before each use, especially those securing guards and drive mechanisms. Vibration during use may cause these to loosen.

Replace damaged, missing or failed parts before using.

Warning labels carry important information.

Replace any missing or damaged warning labels.

DRESS PROPERLY

Do not wear loose clothing, gloves, scarfs, neckties or jewelry (rings, wrist watches), which can be caught in moving parts.

ALWAYS wear protective eye and ear wear. Appropriate gloves are also recommended.

Wear protective hair covering to contain long hair, preventing it from getting caught in machinery.

DO NOT use whilst barefoot or wearing open toed footwear.

KEEP BYSTANDERS AND CHILDREN AWAY

Keep unauthorised persons or animals a minimum distance of 15 metres away from the mower. Do not allow children to handle, use, or climb on the lawnmower.

DO NOT OVERREACH

Keep proper footing and balance at all times, particularly if using on slopes. The machine should not be used on steep slopes and always be sure of footing.

AVOID INJURY FROM UNEXPECTED ACCIDENT

Keep hands out of the way of moving parts, particularly the engine and rotating cutting tool.

DO NOT FORCE TOOL

Always work within the rated capacity. Do not use the machine for a purpose for which it was not intended. Always use the correct handles and shoulder straps provided with the machine.

MAINTAIN YOUR MACHINE WITH CARE

Clean the machine immediately after use. Keep the machine clean to ensure it operates to its full and safest performance. When maintaining this machine, only the manufacturer's original replacement parts should be used. The use of non-original manufacturer parts may invalidate your warranty.

STORE IDLE EQUIPMENT

When not in use, the machine should be stored in a dry location. Keep the machine away from children and others not qualified to use it. DO NOT STORE FUEL IN THE MACHINE, fuel over 30 days old can become stale and if used, damage the carburetor, which is not covered by the manufacturer's warranty.



INSTRUCTION MANUAL

SPECIFICATIONS

Model	WEBC26	WEBC33	WEBC43
Product Number	193866001	193871001	193872001
Engine (cc)	25.4	32.6	42.7
Idle Speed (r/min)	2800	2800	2800
Carburetor	Diaphragm	Diaphragm	Diaphragm
Fuel Tank Capacity (Litre)	0.45	0.70	0.80
Fuel Ratio (Petrol:2 Stroke Mineral Oil)	25:1	25:1	25:1
Blade	255mm 3-blade	255mm 3-blade	255mm 3-blade
Nylon Line Diameter (mm)	2.5mm	2.5mm	2.5mm
Weight (kgs)	N.W 6.5 - G.W 9.2	N.W 7.0 - G.W 10.4	N.W 7.7 - G.W 11.5

The manufacturer reserves the right to change the product specification and livery according to continued product improvements.



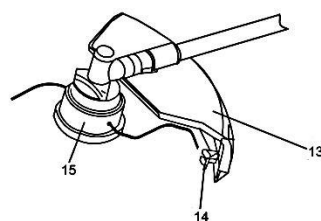
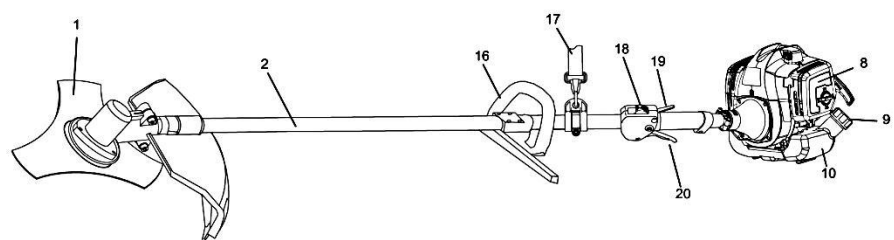
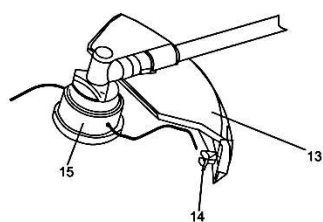
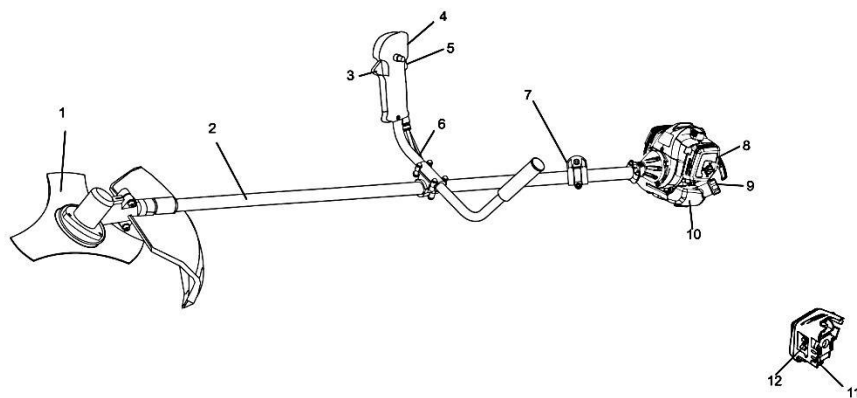
This symbol on the product or on its packaging indicates that this product may not be treated as household waste. Instead it shall be handed over to the applicable collection point for the recycling of electrical and electronic equipment.

For more detailed information about recycling of this product, please contact your local council office, your household waste disposal service or shop where you purchased the product.



COMPONENTS

1. Blade	11. Primer Bulb
2. Driveshaft	12. Choke Lever
3. Throttle Trigger	13. Guard/Shield
4. Ignition Switch	14. Knife
5. Safety Lever	15. Easy Load Head
6. Cow Horn Handle	16. D-Handle
7. Harness Eyelet	17. Harness Assembly
8. Air Filter Cover	18. Ignition Switch
9. Fuel Tank Cap	19. Safety Lever
10. Fuel Tank	20. Throttle Trigger



INSTRUCTION MANUAL

ASSEMBLY

Remove the machine and contents from the carton. Be sure the carton is empty before discarding.

If you require any assistance with regards to the contents of the lawnmower contact us:

Tel: 01793 333212 - Mon – Fri 8.30am – 5.00pm (excl. Bank Holidays)

Email: customerservice@webblawnmowers.co.uk

FITTING GUARD/SHIELD

1. Install the safety cover onto the shaft with the safety cover bracket.
2. Align the four screws of the cover with the safety cover bracket
3. Tighten the screws after setting the safety cover bracket at the appropriate position.

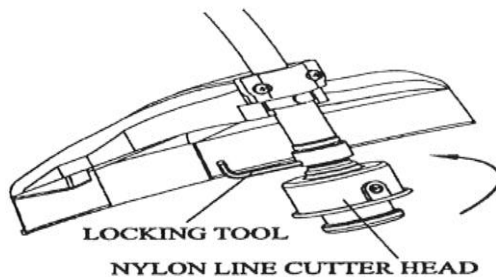


FITTING THE HARNESS

1. Place the clasp of the harness, through the Harness Eyelet located on the driveshaft
2. Adjust the Harness to ensure it is comfortable, but tight enough to allow you to operate the machine appropriately.

FITTING NYLON LINE CUTTING HEAD

1. Align hole in adapter plate with hole in the shaft and install Allen Key.
2. Thread cutter head onto shaft (turning it anti-clockwise) until it is tight. Remove locking tool.



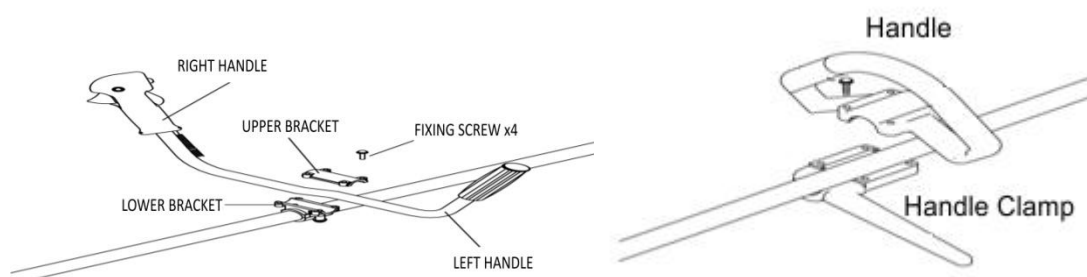


FITTING COW HORN HANDLES (WEBC33 & WEBC43)

1. Install handle on lower bracket.
2. Position handle in a comfortable operating position
3. Fit upper bracket.
4. Tighten the four fixing screws.

FITTING D-HANDLE (WEBC26 Only)

1. Place top handle onto driveshaft.
2. Position lower handle, beneath the top handle in a comfortable operating position
3. Tighten the four fixing screws.

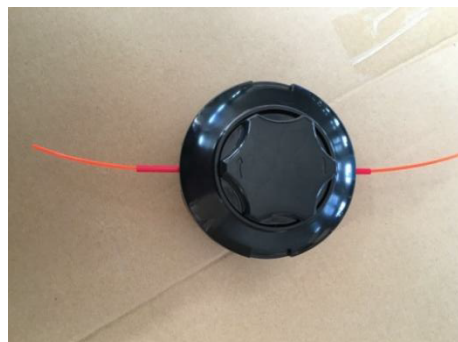
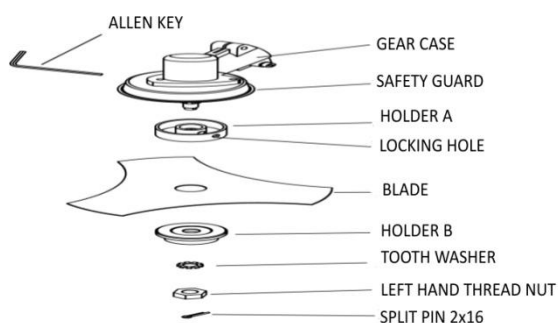


FITTING THE METAL BLADE

1. Install holder A, the blade, holder B, tooth washer, in this order
2. Then clamp with the left-hand thread nut.
3. Align hole of gear case and holder A, and insert Allen Key.
4. Rotate left hand thread nut with spanner in clockwise direction until securely tightened.
5. Install the Split Pin 2x16 and split legs to secure.

REPLACING YOUR NYLON LINE

1. Cut 3 metres of 2.5mm diameter Nylon Line.
2. Align the arrows on the feed/bump knob with the eyelets.
3. Feed the line into the feed pipe (supplied).
4. Feed the feed pipe & line in through the first eyelet and out of the second eyelet.
5. Remove the feed pipe and put in a safe place.
6. Pull the nylon line until you have two equal lengths.
7. Now rotate the feed/bump knob CLOCKWISE, to wind the nylon line into the head.
8. Stop when you have 150mm of nylon line protruding from both eyelets.



WARNING

EXCESSIVE VIBRATION OF THE METAL BLADE INDICATES IT HAS NOT BEEN INSTALLED CORRECTLY. STOP THE ENGINE IMMEDIATELY, CHECK THE BLADE INSTALLATION AND RE-INSTALL CORRECTLY. AN INCORRECTLY INSTALLED BLADE CAN CAUSE INJURY.





INSTRUCTION MANUAL

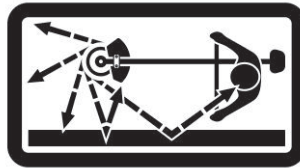
OPERATION



DANGER

All model line trimmers & brushcutters can throw small stones, metal or small objects as well as material being cut. Do not allow anyone to enter the operating DANGER ZONE with you. The danger zone is an area 15 metres in radius

Insist that persons in the RISK ZONE beyond the danger zone wear eye protection from thrown objects. If the unit must be used where there are unprotected people, operate at a low throttle speed to reduce the risk of thrown objects.



DANGER ZONE WITHIN 15 METRES - RISK ZONE GREATER THAN 15 METRES

GENERAL USE



WARNING

Prior to using the machine, ensure all hardware (bolts, screws & nuts) are securely tightened.

Operate the trigger with your right hand & hold the D-Handle with your left hand. (WEBC26 Only)

Operate the trigger on the right handle and hold the left handle for stability (WEBC33 & WEBC43)

The trigger increases and decreases the power of the engine to the attachment, increasing the revolution/reciprocation of the attachment.

WORKING PLAN

Limit the amount of time the product is used continuously to a maximum of 40 minutes per session.

Leave the machine to rest between sessions for between 10-20 minutes.

Total amount of work performed per day with the machine, should be limited to 120 minutes maximum.

Continuous use of the machine can cause "Repetitive Stress Injury (RSI)". If you feel discomfort, redness or swelling of your hands and fingers or any other body part, consult your doctor.

Check local regulations for sound level and hours of operation constraints.

Never transport the machine, whilst the engine is running.





CUTTING WITH A NYLON HEAD

Always keep a firm grip with both hands during operation

The machine should be held at a comfortable position, with the trigger handle at hip height. Adjust the harness to suit.

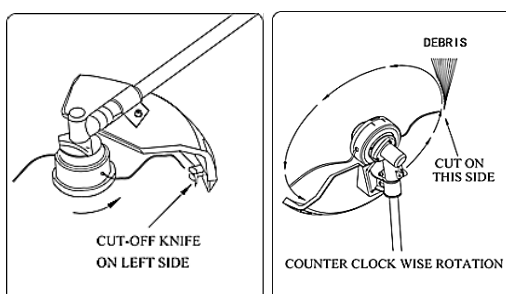
Maintain a firm footing in case the machine hits a solid object & kicks back

Cut tall grass from the top down to prevent grass wrapping around the shaft housing & strong head, which may cause overheating and damage. If grass becomes entangled, stop the engine completely and remove the grass.

The line trimmer head rotates in an ANTI-CLOCKWISE direction. The knife, located on the left side of the guard, ensures your nylon line is operating at the correct length for optimum trimming.

NOTE: Nylon line which is too long or the incorrect diameter (Recommended 2.5mm), will cause excess wear to the engine and clutch components, not covered by the manufacturer's warranty.

It is recommended that the head is tilted, so the nylon line cutting circle is moving away from the user and guard/shield. This will enable debris to be thrown away from the user.



TRIMMING

This is feeding the trimmer carefully into the material you wish to cut. Tilt the head slowly to direct debris away from you. If cutting up to a barrier such as fence, wall or tree, approach from an angle where any debris ricocheting off the barrier, will fly away from you. Move the line head slowly until the grass is cut right up to the barrier, but do not jam (over-feed) the line into the barrier

If trimming up to a wire mesh or chain linked fence, be careful to feed only up to the fence. If you go too far, the line will snap off around the fence.

Trimming can be done to cut through weed stems one at a time. Place the trimmer line head near the bottom of the weed, never high up, which could cause the weed to chatter and catch the line. Rather than cut the weed right through, just use the very end of the line to wear through the stem slowly.

SCALPING AND EDGING

Both of these are done with the line head tilted at a steep angle.

Scalping is removing top growth leaving the earth bare.

Edging is trimming the grass back where it has spread over a path or driveway.

During edging and scalping, hold the unit at a steep angle and in a position where the debris and any dislodged dirt and stones will not come back towards you, even if it ricochets off the hard surface.



WARNING

DO NOT use a metal blade for scalping or edging



WARNING

DO NOT trim any area where there maybe strands of fencing wire. Do not cut where you cannot see what the cutting tool is cutting.





INSTRUCTION MANUAL

CUTTING WITH THE METAL BLADE

Always keep a firm grip with both hands during operation

The machine should be held at a comfortable position, with the trigger handle at hip height. Adjust the harness to suit.

Maintain a firm footing in case the machine hits a solid object & kicks back.

Do not use the metal blade near fencing, posts, buildings or other immovable objects – use the nylon head.

Best results are obtained if you cut from right to left, in a broad sweeping motion.

If a hard object is struck, immediately stop the machine and inspect for damage.



WARNING

DO NOT use the put the metal blade into contact with Utility Wires, Metal Stakes, Rubber, Masonry, Rocks, Fences, and Trees.



DANGER

DO NOT cut with a dull, cracked or damaged metal blade.

Before cutting, inspect for obstructions. If an obstruction cannot be removed, mark its location clearly so you can avoid it during operation.

Rocks & metal can dull or damage a blade. Wires can wrap around the blade head or be thrown in the air.

SCYTHING WEEDS

This is cutting by swinging the blade in a level arc. It can quickly clear areas of field grass and weeds. Scything should not be used to cut large, tough weeds or woody growths.

Scything can be done in both directions, or just in one way which results in the debris being thrown away from you. This is done by using the side of the blade that it is rotating away from you. Tilt the blade downwards slightly, on this same side. You will be hit by some debris if you scythe in both directions

NOTE: THE METAL BLADE IS REVERSIBLE. DO NOT SHARPEN THE METAL BLADE, AN UNEVEN BLADE WILL CAUSE EXCESSIVE VIBRATION.



FUEL & OIL MIXTURE



Fuel & its vapors are very flammable. Do not use or fuel the machine near a flame, sparks or while smoking. Allow the engine to cool for more than 2 minutes, before re-fueling. Never fuel the machine with the engine running. Fuel the engine at least 3 metres away from your work area. Always fuel your machine outdoors.

- ☒ Use good quality unleaded fuel which contains NO ETHANOL or METHANOL. Use Branded 89 octane or higher unleaded fuel, known to be of good quality.
- ☒ Fuel which is older than 30 days old can become stale and cause acid & gum deposits in the fuel system or essential carburetor components. This could result in starting issues which **would not be covered by your manufacturer's warranty**.

To keep fuel fresh, we recommend you use **Handy Parts – Sure Start Garden Machinery Fuel Additive** which is available in 250ml bottles, for 25 litres of fuel.

- ☒ Helps makes machines easier to start
 - ☒ Extends shelf life of petrol up to 2 years
 - ☒ Keeps carburetor & engine clean
 - ☒ Reduces emissions & increases fuel economy
- ☒ Only use 2-stroke air cooled engine oil. DO NOT USE automotive or marine oil.
 - ☒ It is recommended that you use a Fuel Mixing Bottle, to ensure the correct fuel mixture is used with your machine. We recommend Handy Parts item HP-120. The fuel mixture should be shaken prior to entering the machine fuel tank.
 - ☒ Mix only the quantity you require to complete your specific task.

Fuel Mixture Ratio - 25:1 (Unleaded Petrol 25:1 2-stroke Mineral Oil)
If using Synthetic or Semi Synthetic Oil, consult the Oil manufacturers instructions

25:1 Fuel Mixture Ratio

Unleaded Petrol – litre	Two-Stroke Mineral Oil - ml
1	40
2	80
3	120
4	160
5	200

- ☒ Unscrew the machine fuel cap slowly and fill the fuel tank with your fuel mixture to a maximum of 80% capacity. This will allow for fuel tank expansion.
- ☒ Fasten the fuel cap tightly, being careful not to cross-thread. This will also prevent loosening through vibration during use.
- ☒ Wipe away any spillage, with an appropriate material.
- ☒ If the machine has continued leaks, the product should not be started. Never use the machine with damaged ignition cable or spark plug cap, as there is a risk of sparks.

IMPORTANT

- ☒ Ensure that any stored petrol/oil mixture is clearly marked in a separate appropriate canister for a maximum of 4-6 weeks.
- ☒ If the machine is not going to be used for a long period, drain the mixture from the fuel tank, start the engine and drain the carburetor of any remaining fuel. (See Maintenance for further instruction)
- ☒ Dispose of any unwanted 2-stroke mixture at an authorised recycling point.



INSTRUCTION MANUAL

ENGINE STARTING & STOPPING PROCEDURE

STARTING A COLD ENGINE

1. Place the machine onto a flat, firm surface.
2. Keep the cutting head off of the ground and clear of any surrounding objects
3. Move the stop switch to "START" position
4. Give a gentle push on the primer pump repeatedly (7-10 times) until fuel comes into the primer pump.
5. Pull the Choke Lever up to close the choke
6. Whilst holding the machine down with your left hand, away from the engine and pull the engine recoil starter rope vigorously, until the engine false starts.

(DO NOT LET THE RECOIL STARTER ROPE RETRACT BY ITSELF, FEED THE ROPE BACK INTO THE HOUSING)

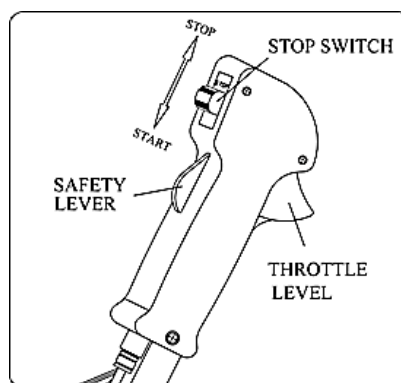
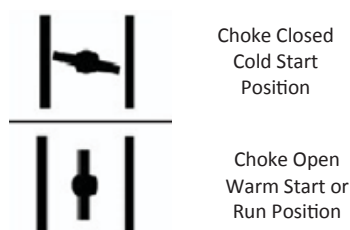
7. Push the choke lever downwards (excessive cranking with choke lever up will cause the engine to flood, making it difficult to start.)
8. Pull starter handle until engine starts.
9. Allow engine to warm up for a few minutes before using.

STARTING A WARM ENGINE

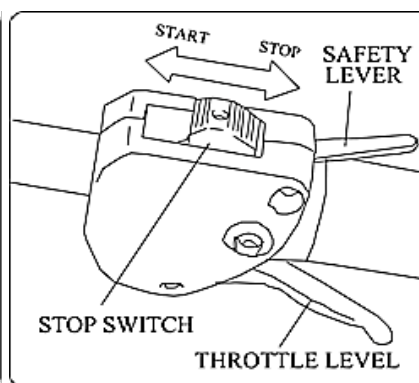
1. Move the switch to "START" position
2. If the fuel tank was run dry on previous operation, follow steps 3-7 of cold start procedure.
3. Whilst holding the machine down with your left hand, away from the engine and pull the engine recoil starter rope vigorously, until the engine false starts.

STOPPING THE ENGINE

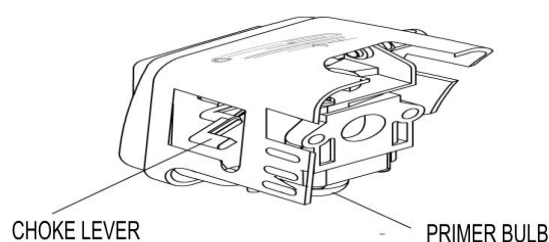
1. Move the stop switch to the "STOP" position



COW HORN HANDLE



D- HANDLE





MAINTENANCE, CLEANING & STORAGE



WARNING

**Improper maintenance & storage of the machine may void your warranty.
Keep the machine clean for better and safer performance.**

MAINTENANCE

Before each use, check all nuts & bolts to be sure they are sufficiently tightened.

We recommend only manufacturer original parts are used when maintaining this machine. Failure to do so could invalidate your manufacturer's warranty.

The engine must be switched off, with the spark plug cap removed, before the machine is unassembled, cleaned, serviced or maintained.

ADJUSTING CARBURETOR

Do not adjust carburetor unless necessary. If you have trouble with the carburetor, see your dealer. Improper adjustment may cause engine damage and void warranty.

SPARK PLUG

Check the Spark Plug after every 10-15 hours of use.

Remove the Spark Plug cap

Using the Spark Plug Spanner supplied, remove the Spark Plug by turning it anti-clockwise.

Clean & adjust the electrode gap to 0.6-0.7mm

If the Spark Plug is visibly damaged or worn, replace immediately (See Specification for details)

Install the new/cleaned Spark Plug to finger tightness, before fully tightening with the spanner.

BLADE SHARPENING

Never attempt to sharpen the blade. It is reversible, so should be turned over when blunt. The blade must remain balanced; an unbalanced blade will cause excessive vibration through the machine. Always check for any damage before each use and replace a damaged blade immediately, with an approved replacement part.

CLEANING

Keep your machine clean.

Thoroughly clean the machine at the end of each use, paying particular attention to cuttings in and around the guard and cutting tool.

AIR FILTER

Accumulated dust in the air filter will reduce engine efficiency, increase fuel consumption and allow abrasive particles to pass in the engine. Remove & clean the air filter regularly to ensure optimum performance.

Remove the air filter cover, by releasing the securing winged screw from the front of the cover.

Lift off the cover.

Remove the sponge air filter from the housing.

Tap the filter to remove light surface dust.

Heavy deposits should be washed out of the Air Filter in soapy water. Allow the filter to dry completely.

FUEL FILTER

The fuel tank is fitted with a filter. It is situated at the free end of fuel pipe and can be picked out through the fuel filler neck, with a piece of hooked wire or similar.

Check the fuel filter periodically. Do not allow dust to enter into the fuel tank. A clogged filter will cause difficulty in starting the engine or abnormalities in engine performance.

When the filter is dirty, replace the filter.

When the inside of the fuel tank is dirty, it can be cleaned by rinsing the tank out with petrol.





INSTRUCTION MANUAL

STORAGE

For years of trouble free service, make sure the machine is clean and dry before storing.

Before storing, clean the machine thoroughly as indicated above.

Store indoors or in a safe, locked protected area during severe weather and winter months.

DO NOT STORE in an enclosed area, where fuel vapors can reach an open hot flame.

DO NOT STORE fuel in the machine. Ensure fuel is removed from the fuel tank and carburetor.

If storing for an extended period, inspect, clean and repair the machine if necessary. Remove all fuel from the fuel tank. Start the engine, this will remove all fuel from the carburetor and fuel lines. Remove the spark plug, pour a small quantity of 2-stroke oil into the spark plug hole of the cylinder and re-seat spark plug. Store in a clean, dry, dust free area.

DO NOT STORE fuel for longer than 30 days. Fuel can become stale and cause damage to the engine carburetor, which is not covered by the machines manufacturer's warranty.

TROUBLE SHOOTING

Failures such as a difficulty in starting the engine, irregularity in functions and abnormality in performance can normally be prevented if careful attention is paid to all operating instructions and maintenance procedures.

Should the engine not function properly, check the following?

That the fuel system is in good condition and fuel is flowing to the engine.

The ignition system is in good condition and the spark plug, sparks correctly.

Compression of the engine is adequate.

FAILURE TO START

Correctly follow the starting procedure, not setting the choke lever or priming the engine can cause the engine to not start.

Dispose of fuel from the tank, particularly if over 30 days old.

Ensure that fuel is fresh and clean.

Check fuel filter to ensure it is clean. (Replace filter if necessary).

Make sure air filter elements are clean.

Install a new, properly gapped spark plug.

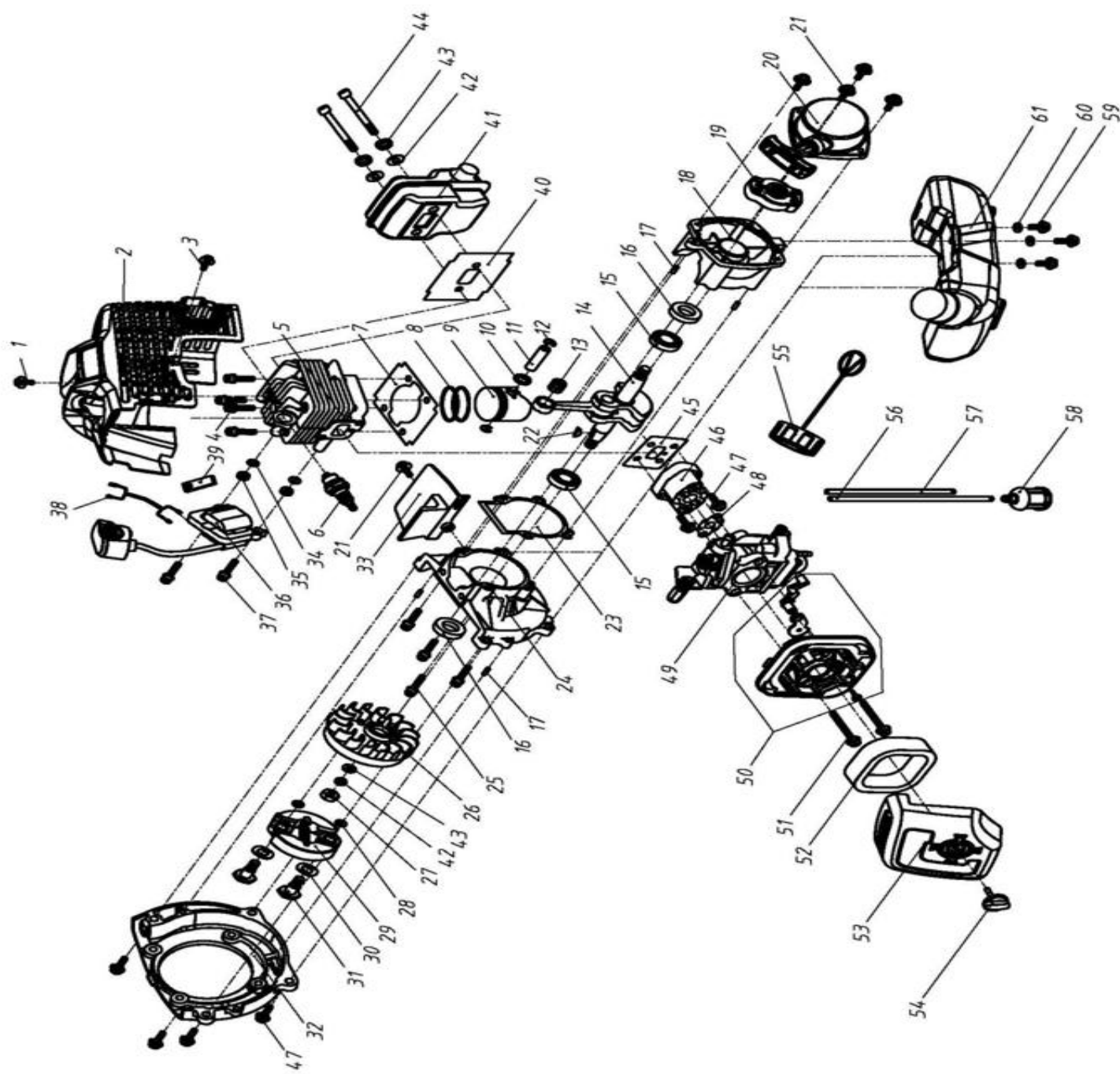
When there is serious trouble with the unit, do not try to repair it yourself, but have your local approved service dealer inspect it for you.



NOTES

[illegible]

PARTS DIAGRAM - WEBC26 Engine

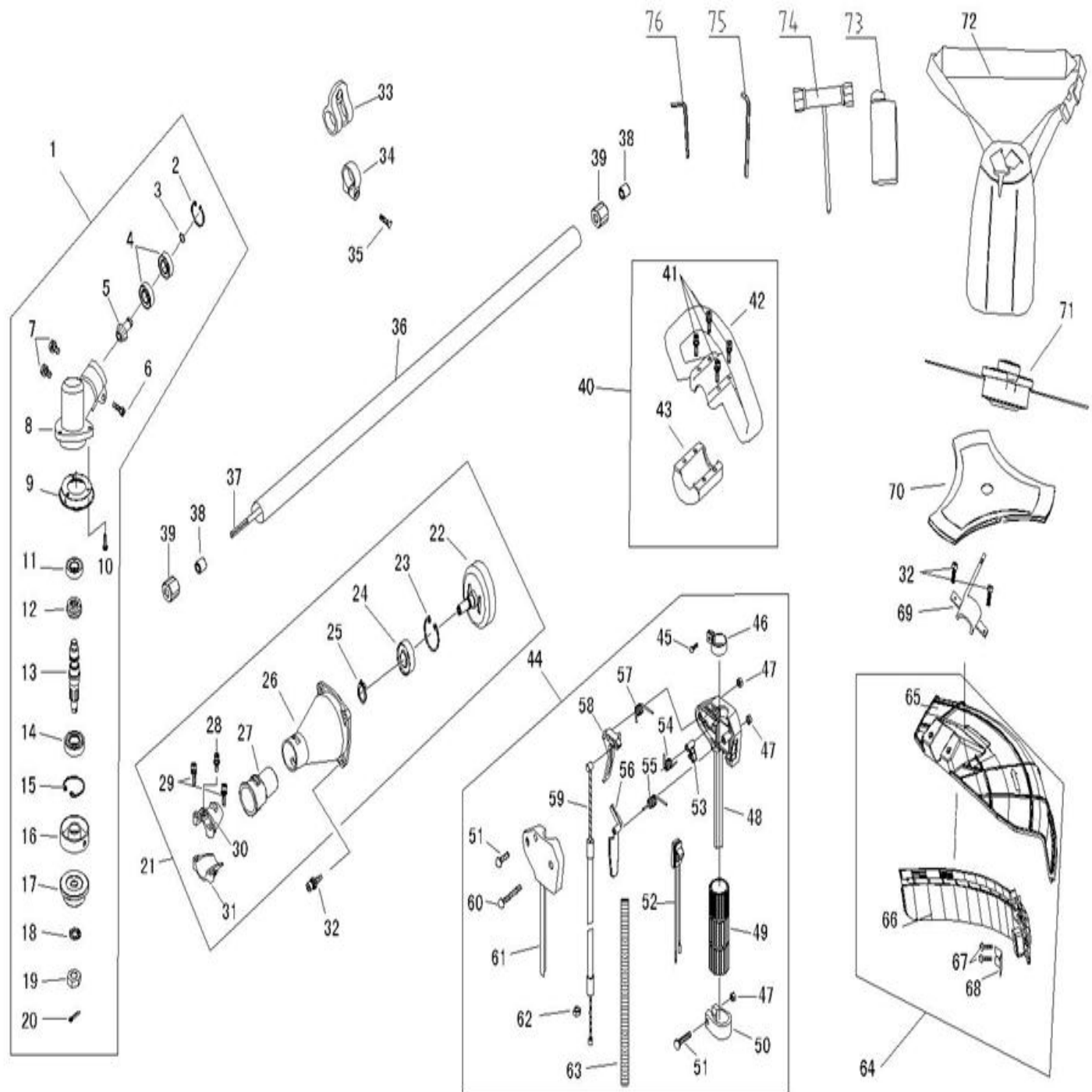


PARTS LIST - WEBC26 Engine

Item No.	Part No.	Description	Qty	Item No.	Part No.	Description	Qty
1	WE03010110121	Screw M5x12	1	32	WE70070030026	Cover	1
2	WE70030030853	Engine Cowlng	1	33	WE70030030164	Guide	1
3	WE03020020055	Screw GB/T9074.4 M4x12	1	34	WE030400020012	Washer GB/T97.1.4	2
4	WE03010010062	Screw M5x20	4	35	WE02070010048	Spacer	2
5	WE70070130069	Cylinder	1	36	WE02050030229	Ignition Coil	1
6	WE03130010013	Spark Plug RC16Y	1	37	WE03020020054	Bolt GB/T9074.4 M4*20	2
7	WE02070010032	Cylinder Gasket	1	38	WE02050050213	Electrical Connections	1
8	WE02020020003	Piston Ring	2	39	WE02080030042	Rubber	1
9	WE02010020005	Piston	1	40	WE02070010162	Exhaust Gasket	1
10	WE02020150002	Stop Ring	2	41	WE02050010138	Exhaust	1
11	WE02020010004	Piston Pin	1	42	WE03050010008	Washer GB/T93.8	1
12	WE02020030017	Piston Pin Retainer	2	43	WE030400020018	Washer GB/T97.1.8	1
13	WE03090020018	Needle Bearing	1	44	WE03010010077	Bolt M5x55	2
14	WE02020120023	Crankshaft	1	45	WE02070010019	Side Gasket	1
15	WE03090010028	Bearing GB/T276 6001/P5	2	46	WE700300020016	Insulator	1
16	WE03100010009	Seal 12x22x7	2	47	WE03020020012	Bolt GB/T9074.4 M5*20	6
17	WE03060010002	Pin	4	48	WE02070010071	Carburettor Gasket	1
18	WE70070050038	Rear Crankcase	1	49	WE020500020101	Carburettor	1
19	WE02050100015	Starter Pawl	1	50	WE70080120007	Air Filter Housing with Choke	1
20	WE02050070090	Recoil Assembly	1	51	WE03020020044	Bolt GB/T9074.4 M5*55	2
21	WE03020020029	Screw GB/T9074.4 M4*16	5	52	WE020900010011	Air Filter	1
22	WE03070010001	Woodruff Key 3x3.7x12	1	53	WE700300040225	Air Filter Cover	1
23	WE02070010119	Crankcase Gasket	1	54	WE02110030079	Air Filter Screw	1
24	WE70070050039	Front Crankcase	1	55	WE02110020026	Fuel Tank Cap Assembly	1
25	WE03010010058	Bolt M5x25	4	56	WE61330010017	Fuel Inlet Pipe	1
26	WE02050030020	Flywheel	1	57	WE61330010018	Fuel Outlet Pipe	1
27	WE03030020003	Nut M8	1	58	WE02050120002	Fuel Filter	1
28	WE03040050052	Washer φ6*15*1.2	2	59	WE03020020027	Screw GB/T9074.4 M5*16	3
29	WE02050160002	Clutch Assembly	1	60	WE03040050022	Washer φ5*15*1	3
30	WE03040050042	Washer	2	61	WE70050030170	Fuel Tank	1
31	WE02020130001	Clutch Bolt	2				



PARTS DIAGRAM - WEBC26 Machine

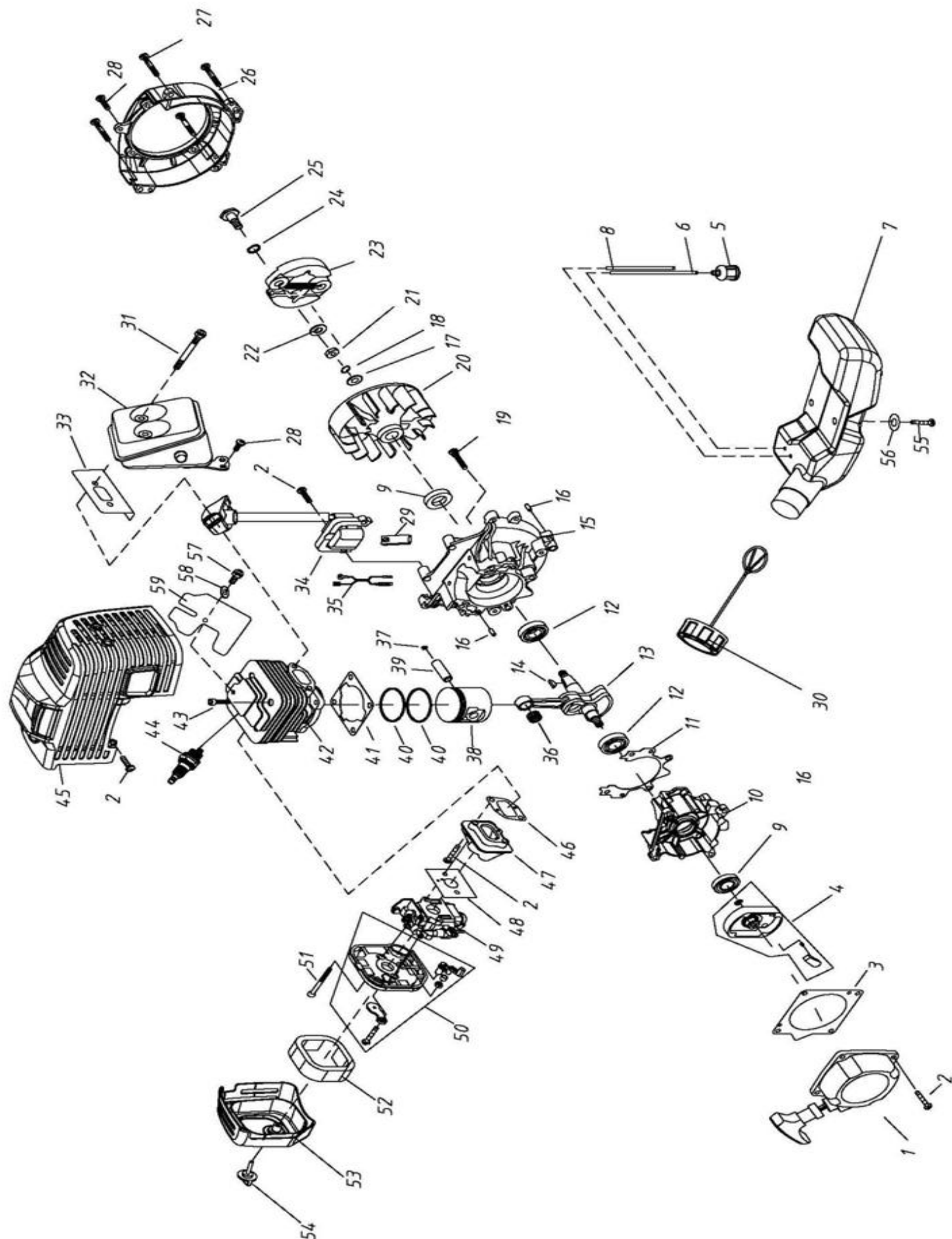


PARTS LIST - WEBC26 Machine

Item No.	Part No.	Description	Qty	Item No.	Part No.	Description	Qty
1	WE61270030148	Gear Head Assembly	1	39	WE02080020006	Rubber Cover	6
1-2	WE03120020002	Retaining Ring 26	1	40	WE61270090005	Handle Assembly	1
1-3	WE03120010001	Retaining Ring 10	1	40-41	WE03010010049	Screw M5X35	4
1-4	WE03090010074	Bearing 6000-2RS/P5	2	40-42	WE70030160079	Handle	1
1-5	WE02020090063	Pinion	1	40-43	WE70030160032	Handle Clamp	1
1-6	WE03020030014	Screw M5×25	1	44	WE61270040018	Trigger Assembly	1
1-7	WE03020030021	Bolt M6×12	2	44-45	WE03010010029	Screw M5X14	1
1-8	WE70070010031	Gear Case	1	44-46	WE02020160213	Clamp	1
1-9	WE02020160725	Safety Guard	1	44-47	WE03030080002	Nut M5	3
1-10	WE03020020018	Screw M5×12	3	44-48	WE70030070164	Trigger Housing - Right	1
1-11	WE03090010072	Bearing 6000/P5	1	44-49	WE02080020054	Rubber Cover	1
1-12	WE02020090012	Gear	1	44-50	WE70030180091	Clamp	1
1-13	WE02020090029	Gear Shaft	1	44-51	WE03010010022	Screw M5X20	2
1-14	WE03090010014	Bearing 6002-2RS/P5	1	44-52	WE02050050078	Stop Switch	1
1-15	WE03120020001	Stop Ring 32	1	44-53	WE70030070047	Tine	1
1-16	WE02020100020	Holder A	1	44-54	WE02020110039	Spring	1
1-17	WE02020100012	Holder B	1	44-55	WE02020110041	Spring	1
1-18	WE03040050014	Washer 10	1	44-56	WE70030070172	Safety Lever	1
1-19	WE03030010008	Nut M10×1.25 (Left Hand)	1	44-57	WE02020110041	Spring	1
1-20	WE03060020004	Pin 2×16	2	44-58	WE70030070074	Throttle Lever	1
21	WE70080060045	Clutch Assembly	1	44-59	WE02050040045	Electrical Cable	1
21-22	WE02020050040	Clutch Drum	1	44-60	WE03010010046	Screw M5X30	1
21-23	WE03120020004	Stop Ring 35	1	44-61	WE70030070216	Trigger Housing - Left	1
21-24	WE03090010070	Bearing 6202-2RS/P5	1	44-62	WE03030010005	Nut M6	2
21-25	WE03120010005	Stop Ring 15	1	44-63	WE61350020002	Tube	1
21-26	WE70070060032	Clutch Case	1	64	WE70080120227	Safety Guard Assembly	1
21-27	WE02080020104	Rubber Cover	1	64-65	WE70030030786	Safety Guard	1
21-28	WE03010010056	Screw M5×14	1	64-66	WE70030180314	Guard Shield	1
21-29	WE03010010058	Screw M5×25	2	64-67	WE03010040025	Screw ST4.2×13	2
21-30	WE70070080038	Clamp B	1	64-68	WE02020070102	Knife	1
21-31	WE70070080039	Clamp A	1	69	WE02020160712	Bracket	1
32	WE03010010061	Screw M6×20	6	70	WE02060040165	Blade	1
33	WE70030180133	Harness Clamp	1	71	WE02050220013	Nylon Cutter Head	1
34	WE70030160007	Clamp	1	72	WE02050060020	Harness Assembly	1
35	WE03020020012	Screw M5×20	1	73	WE70080010003	Fuel/Oil Mixer Bottle	1
36	WE02010010215	Shaft(26*1.5*1500)	1	74	WE03080030011	Spark Plug Wrench	1
37	WE02020060006	Drive Shaft (1540mm)	1	75	WE03080010004	Allen Key	1
38	WE02040010006	Oil-Bearing (8*14*14)	6	76	WE03080010003	Allen Key	1



PARTS DIAGRAM - WEBC33 Engine

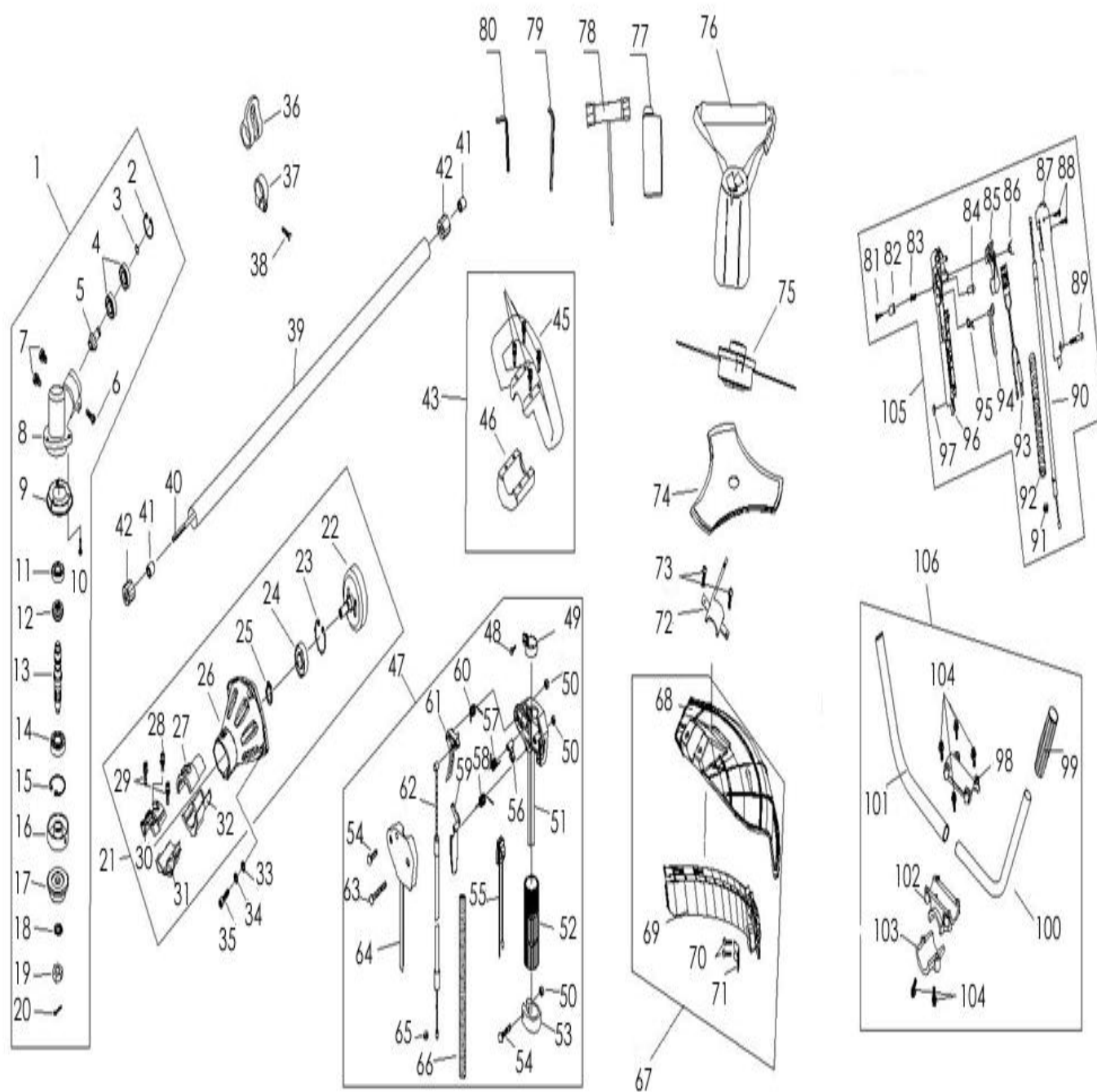


PARTS LIST - WEBC33 Engine

Item No.	Webb Part No.	Webb Description	Qty	Item No.	Webb Part No.	Webb Description	Qty
1	WE02050070024	Recoil Assembly	1	31	WE03010010077	Bolt M5x55	2
2	WE03020020012	Screw M5x20	8	32	WE02050010139	Exhaust	1
3	WE02010030018	Gasket	1	33	WE02070010146	Exhaust Gasket	1
4	WE02050100006	Starter Pawl	1	34	WE02050030230	Ignition Coil	1
5	WE02050120002	Fuel Filter	1	35	WE02050050181	Wire	1
6	WE61330010013	Inlet Fuel Pipe	1	36	WE03090020020	Needle Bearing	1
7	WE70050030171	Fuel Tank	1	37	WE02020030016	Piston Pin Retainer	2
8	WE61330010018	Outlet Fuel Pipe	1	38	WE02010020009	Piston	1
9	WE03100010009	Oil Seal 12x22x7	2	39	WE02020010006	Piston Pin	1
10	WE70070050112	Rear Crankcase	1	40	WE02020020006	Piston Ring	2
11	WE02070010230	Crankcase Gasket	1	41	WE02070010034	Cylinder Gasket	1
12	WE03090010034	Bearing 6201/P5	2	42	WE70070130069	Cylinder	1
13	WE02020120031	Crankshaft Assembly	1	43	WE03010010062	Screw M5x20	4
14	WE03070010002	Woodruff Key 3x5x13	1	44	WE03130010013	Spark Plug RC16Y	1
15	WE70070050078	Front Crankcase	1	45	WE70030030854	Engine Cowling	1
16	WE03060010004	Pin 4x10	2	46	WE02070010092	Insulator Gasket	1
17	WE03040020018	Washer 8 - GB/T97.1	1	47	WE70030020011	Insulator	1
18	WE03050010008	Washer 8 - GB/T93	1	48	WE02070010072	Carburettor Gasket	1
19	WE03010010069	Screw M5x30	4	49	WE02050020016	Carburettor	1
20	WE02050030046	Flywheel	1	50	WE70080120007	Air Filter Housing	1
21	WE03030010017	Nut M8x1.25	1	51	WE03020020047	Screw M5x50	2
22	WE03040050048	Gasket B	2	52	WE02090010011	Air Filter	1
23	WE02050160006	Clutch	1	53	WE70030040226	Air Filter Cover	1
24	WE03040050043	Washer	2	54	WE02110030079	Air Filter Knob	1
25	WE02020130003	Clutch Step Screw	2	55	WE03020020027	Screw M5x16	3
26	WE70070030044	Cover	1	56	WE03040050022	Washer φ5*15*1	3
27	WE03010010062	Screw M5x20	4	57	WE03010110057	Screw M5x8	1
28	WE03020020053	Screw M5x12 - GB/T9074.4	2	58	WE03040020020	Washer φ5 - GB/T97	1
29	WE02080030042	Rubber Stopper	1	59	WE02020160764	Plate	1
30	WE02110020026	Fuel Cap	1				



PARTS DIAGRAM - WEBC33 & WEBC43 Machine

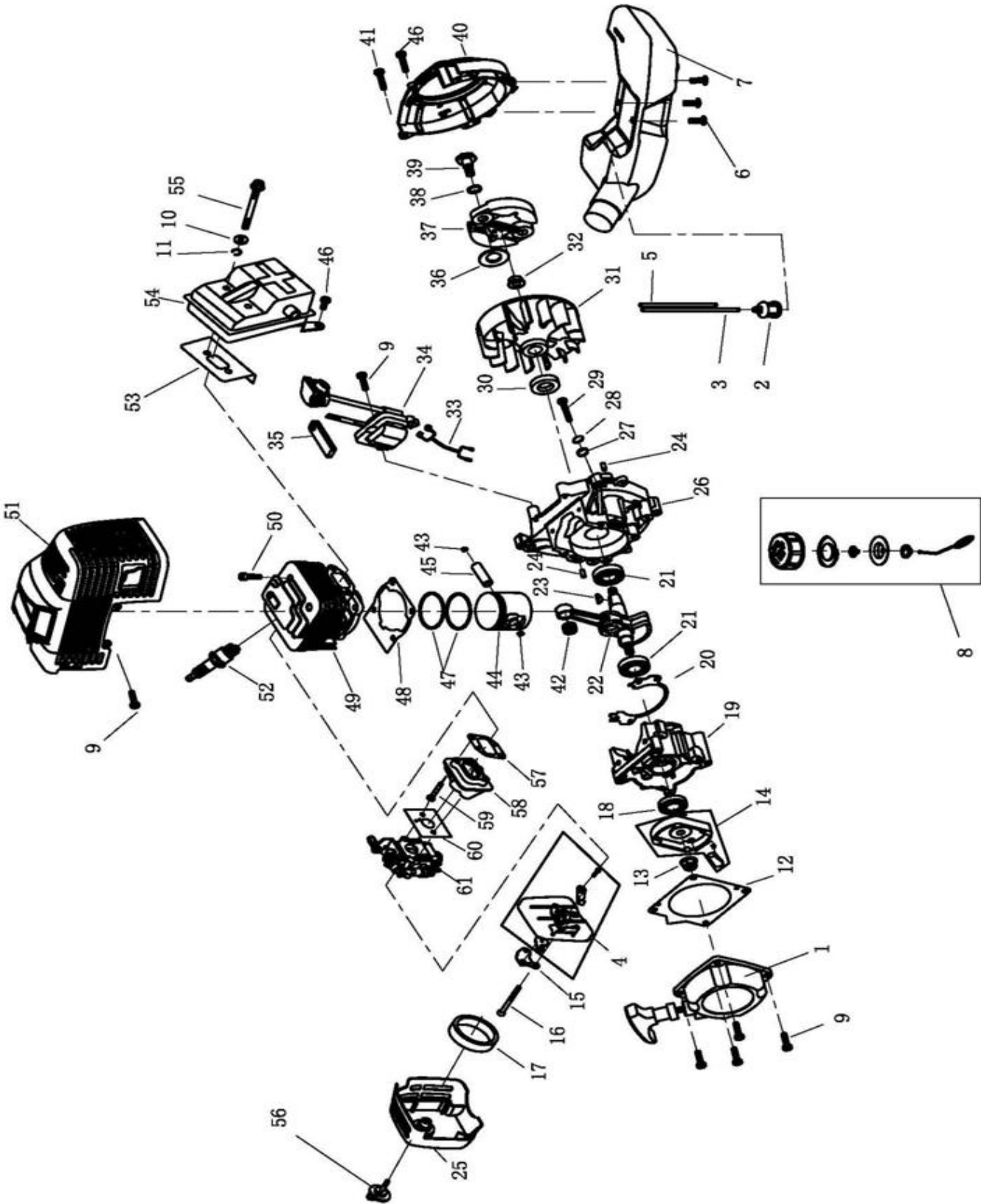




PARTS LIST - WEBC33 &WEBC43 Machine

Item No	Webb Part No	Webb Description	Qty	Item No	Webb Part No	Webb Description	Qty	Item No	Webb Part No	Webb Description	Qty
1	WE61270030148	Gear Head Assembly	1	37	WE70030160007	Clamp	1	72	WE02020160712	Bracket	1
2	WE03120020002	Retaining Ring 26	1	38	WE03020020012	Screw M5x20	1	73	WE03010010060	Screw M6x20	4
3	WE03120010001	Retaining Ring 10	1	39	WE02010010242	Pipe(26x1.5x1500)	1	74	WE02060040165	Blade	1
4	WE03090010074	Bearing 6000-2RS/P5	2	40	WE02020060018	Drive Shaft (1540mm)	1	75	WE02050220013	Nylon Cutter Head	1
5	WE02020090063	Pinion	1	41	WE02040010006	Oil-Bearing (8x14x14)	6	76	WE02050060020	Harness Assembly	1
6	WE03020030014	Screw M5x25	1	42	WE02080020006	Rubber Cover	6	77	WE70080010003	Mixing Bottle	1
7	WE03020030021	Bolt M6x12	2	43	WE61270090005	Handle Assembly	1	78	WE03080030011	Double End Tubular Wrench	1
8	WE70070010031	Gear Case	1	44	WE03010010048	Screw M5x35	4	79	WE03080010004	Allen Key	1
9	WE02020160725	Safety Guard	1	45	WE70030160079	Handle	1	80	WE03080010003	Allen Key	1
10	WE03020020018	Screw M5x12	3	46	WE70030160032	Handle Clamp	1	105	WE70080080010	Shaft Assembly	1
11	WE03090010072	Bearing 6000/P5	1	47	WE61270040033	Trigger Assembly	1	81	WE03010040037	Screw ST2.9x10	1
12	WE02020090012	Gear	1	48	WE03010010029	Screw M5x14	1	82	WE70030070003	Button	1
13	WE02020090029	Gear Shaft	1	49	WE02020160213	Clamp	1	83	WE02020110044	Spring	1
14	WE03090010014	Bearing 6002-2RS/P5	1	50	WE03030080002	Nut M5	3	84	WE70030070092	Lock Pin	1
15	WE03120020001	Retaining Ring 32	1	51	WE70030070164	Trigger Housing Right	1	85	WE70030070051	Handgrip	1
16	WE02020100020	Holder A	1	52	WE02080020053	Rubber Cover	1	86	WE02020110028	Spring	1
17	WE02020100012	Holder B	1	53	WE70030180090	Clamp	1	87	WE70030070167	Casing Right	1
18	WE03040050014	Washer 10	1	54	WE03010010022	Screw M5x20	2	88	WE03010040029	Screw ST2.9x18	2
19	WE03030010008	Left Nut M10x1.25	1	55	WE02050050078	Stop Switch	1	89	WE03010010064	Screw M5x27	1
20	WE03060020004	Pin 2x16	2	56	WE70030070047	Tine	1	90	WE02050040048	Cable	1
21	WE70080060046	Clutch Assembly	1	57	WE02020110039	Spring	1	91	WE03030010004	Nut M6	2
22	WE02020050026	Clutch Drum	1	58	WE02020110041	Spring	1	92	WE01040030001	Tube 710mm	1
23	WE03120020004	Retaining Ring 35	1	59	WE70030070172	Safety Lever	1	93	WE02050050092	Stop Button	1
24	WE03090010070	Bearing 6202-2RS/P5	1	60	WE02020110040	Spring	1	94	WE70030070192	Handgrip	1
25	WE03120010005	Retaining Ring 15	1	61	WE70030070074	Throttle Lever	1	95	WE02020110029	Spring	1
26	WE70070060008	Clutch Case	1	62	WE02050040045	Cable	1	96	WE70030070219	Casing Left	1
27	WE02080010025	Rubber Cover	1	63	WE03010010046	Screw M5x30	1	97	WE03030060008	Nut M5	1
28	WE03010010056	Screw M5x14	1	64	WE70030070216	Trigger Housing Left	1	106		Cow Horn Handle Assembly	1
29	WE03010010058	Screw M5x25	2	65	WE03030010004	Nut M6	2	98	WE70070080055	Upper Cap	1
30	WE70070080061	Clamp B	1	66	WE61350020002	Tube	1	99	WE02080020123	Rubber Cover	1
31	WE70070080062	Clamp A	1	67	WE70080120227	Safety Guard Assembly	1	100	WE02020160512	Left Handgrip	1
32	WE02080010026	Rubber Cover	1	68	WE70030030786	Safety Guard	1	101	WE02020160462	Right Handgrip	1
33	WE03040020016	Washer	4	69	WE70030180314	Cover	1	102	WE70070080053	Bracket	1
34	WE03050010013	Washer	4	70	WE03010040025	Screw ST4.2x13	2	103	WE70070080054	Cap Lower	1
35	WE03010010080	Screw M6x16	4	71	WE02020070102	Knife	1	104	WE03010010058	Screw M5x25	6
36	WE70030180133	Harness Clamp	1								

PARTS DIAGRAM - WEBC43 Engine





PARTS LIST - WEBC43 Engine

Item No	Webb Part No.	Webb Description	Qty	Item No	Webb Part No.	Webb Description	Qty
1	WE02050070024	Recoil Assembly	1	32	WE03030010017	Nut 8x1.25	1
2	WE02050120002	Fuel Filter	1	33	WE02050050181	Wire	1
3	WE61330010018	Return Pipe	1	34	WE02050030231	Ignition Coil	1
4	WE70030040012	Air Filer Housing	1	35	WE02080030042	Rubber Plug	1
5	WE61330010019	Inlet Pipe	1	36	WE03040050048	Washer φ8	2
6	WE03020020027	Bolt M5x16	3	37	WE02050160006	Clutch	1
7	WE70050030172	Fuel Tank	1	38	WE03040050043	Corrugated Gasket φ10*14	2
8	WE02110020026	Fuel Tank Cap	1	39	WE02020130003	Clutch Screw	2
9	WE03020020012	Bolt M5x20	6	40	WE70070030045	Flywheel Cover	1
10	WE03040020016	Washer 6	2	41	WE03010010062	Bolt M5x20	4
11	WE03050010013	Washer 6	2	42	WE03090020022	Needle Bearing	1
12	WE02010030018	Recoil Gasket	1	43	WE02020030014	Baffle Ring	2
13	WE03040050022	Washerφ5x15x1	3	44	WE02010020012	Piston	1
14	WE02050100006	Starter Pawl	1	45	WE02020010009	Piston Pin	1
15	WE02020160533	Oil Baffle Plate	1	46	WE03020020053	Bolt M5x12	1
16	WE03020020044	Bolt M5x55	2	47	WE02020020008	Piston Ring	2
17	WE02090010044	Air Filter	1	48	WE02070010037	Cylinder Gasket	1
18	WE03100010009	Oil Seal 12x22x7	1	49	WE70070130067	Cylinder	1
19	WE70070050055	Front Crankcase	1	50	WE03010010062	Bolt M5x20	4
20	WE02070010231	Crankcase Gasket	1	51	WE70030030855	Housing	1
21	WE03090010016	Bearing	2	52	WE03130010013	Spark Plug RCJ6Y	1
22	WE02020120037	Crankshaft	1	53	WE02070010165	Exhaust Gasket	1
23	WE03070010002	Key	1	54	WE02050010080	Exhaust	1
24	WE03060010004	Pin	2	55	WE03010010086	Bolt M6x55	2
25	WE70030040227	Air Filter Cover	1	56	WE02110030079	Air Filter Cover Knob	1
26	WE70070050113	Rear Crankcase	1	57	WE02070010086	Insulator Gasket	1
27	WE03040020018	Washer 8	1	58	WE70030020015	Insulator	1
28	WE03050010008	Washer 8	1	59	WE03020020034	Bolt M5x25	2
29	WE03010010069	Bolt M5x30	4	60	WE02070010073	Carburettor Gasket	1
30	WE03100010024	Oil Seal 15x30x7	1	61	WE02050020019	Carburettor	1
31	WE02050030072	Flywheel	1	62	WE03020020018	Bolt M5x10	1

INSTRUCTION MANUAL



EC DECLARATION OF CONFORMITY

We Handy Distribution Ltd - SN3 5HY (Importer) declare that the product:

Designation: Petrol Brushcutter & Line Trimmer

Model(s): WEBC26 - WEBC33 - WEBC43

Type/Serial No. As per rating label on machine

Complies with the following directives:

Machinery Directive as last amended by EC Directive 2006/42/EC Annex -VII

The conformity assessment procedure followed was in accordance with

EN ISO 11806-1:2011

Measured Sound Pressure Level: $L_{PA} = 97\text{dB(A)}$

Measured Sound Power Level: $L_{WA} = 114\text{dB(A)}$

Notified Body:

TÜV SÜD Product Service GmbH

Addresses:

- 10 Huaxia Road(m), Dongting, Wuxi, Jiangsu, 214100 (P.R China)
- Zertifizierselle, Ridlerstraße 65, 80339 München, Germany

Authorised signatory and technical file holder

Date: 10/11/2015

Signature: 

Name: Mr Simon Belcher

Position: Managing Director

Company: Handy Distribution Ltd

Address: Murdock Rd, Swindon, Wiltshire, SN3 5HY.





NOTES

This image shows a full page of blank handwriting practice paper. It features multiple sets of horizontal lines across the entire page. Each set consists of three lines: two solid black outer lines and one dashed purple middle line, providing a guide for letter height and placement. The lines are evenly spaced and extend from the left edge to the right edge of the page.



INSTRUCTION MANUAL

This Service Book is provided with your Webb, to help you look after your purchase to our recommendations and enable you to take advantage of the 2 year conditional manufacturer domestic warranty*.

* Commercial/Professional & Hire users receive a 90 day warranty

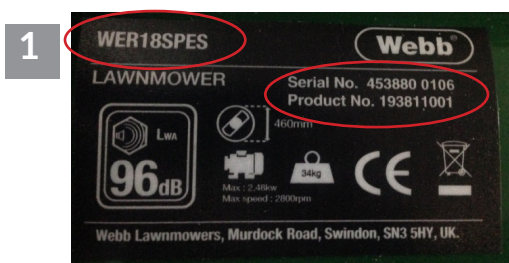
Present this service book to your authorised Webb repair dealer, whenever a service or a warranty appraisal is required.

The booklet is applicable to the following products, in the UK only:

Ride On Lawn Tractors
Petrol & Electric Cylinder Lawnmowers
Petrol Rotary Lawnmowers
Petrol Hand Held Range

Please register your machine using the following pages or at www.webblawnmowers.co.uk. By registering your machine, you agree to maintain the machine in accordance with the service schedules specified in this manual and services duly recorded. You may be asked to produce this booklet as proof of servicing in the event of a claim. Proof of purchase should also be kept as a reference.

Ensure you have the following information available from your machine product label. The two examples below can be found on your machine:



1. Model Number

2. Serial & Product Number



Cylinder Mowers Only

3. Serial Number

4. Model Number

Please complete using BLOCK CAPITALS.
Sections marked* must be completed to validate Warranty.



SERVICE BOOK

1. Users Statement of Warranty

Each new machine is warranted against defective material or assembly of material under normal usage. The warranty applies to the original purchaser, is not transferable and covers faulty parts and the labour involved in replacing and repairing those parts, which are of original manufacture.

2. Period of Warranty

2 year conditional warranty from the original date of sale to the first domestic user.

90 days from the original date of sale to the professional/commercial or for hire user.

Engine warranty as per the engine manufacturer's warranty, which will be supplied with the machine.

90 days from the original date of sale for Replacement Spare Parts

All machines' must be serviced within the first 14 months from the original date of purchase, to qualify for a second year parts & labour warranty, details of the service must be recorded in the service record within this manual.

A reduced warranty period of 90 days applies to those items which are subject to normal wear and tear and in normal use, will need replacement or adjustment.

These items are chargeable after 90 days of ownership.

Filters
Tyres / Wheels
Drive chains and belts
Brake & clutch friction components
Control cable & starter cords
Fluids & lubricants
Spark plugs
Blades (Lawnmowers & Brushcutters)
Cutter bars (Hedgecutters)
Drive & clutch cable surfaces
Nylon Lines (Line Trimmers)
Carburettor cleaning
Bearings
Bushes
Electric cable
Grass collectors

3. Not covered by this warranty

(a) The warranty policy does not cover any depreciation or damages caused by ordinary wear, rusting or corrosion, lack of correct maintenance or operation, misuse, abuse, lack of transportation or accident.

(b) The warranty policy does not cover any costs necessary for the standard periodic maintenance services instructed by the operators manual, or service parts replacement which would include oil, filters, tyres, belts, brake linings, fuses, blades, seals and other service parts unless it can be proven that the item has evidence of faulty manufacture.

(c) The warranty policy will not cover failure or damage caused as a result of parts or accessories being modified without the written approval of GJ Handy & Co Ltd.

(d) The warranty policy will not cover the unit if non-genuine parts have been fitted and as a result damage has occurred to the unit.

(e) The warranty policy is non-transferable and is only applicable to the original purchaser.

4. Disclaimer

(a) This warranty is only a remedy for defect of products. GJ Handy & Co Ltd will never warranty in terms of the merchantability or the fitness for a particular purpose.

(b) No person is authorised to make any warranties, representations or promises, expressed or implied, on behalf of GJ Handy & Co Ltd, or to modify the terms conditions or limitation of this warranty policy in any way.

(c) Neither GJ Handy & Co Ltd nor any company affiliated with GJ Handy & Co Ltd shall be liable in any event or manner whatsoever for incidental or consequential damages or injuries, including, but not limited to, loss of crops, loss of profit, out of pocket expenses or profits, rental of substitute equipment or other commercial losses.





INSTRUCTION MANUAL

5. General

- (a) Most warrantable failures show up within the first few weeks of use. These failures are usually straightforward and warranty assessment is relatively easy.
- (b) Failures relating to cutter decks and belts need careful investigation, as the cause may not always be straightforward. Look for damage to blades and pulleys especially when the cutter belt or blade boss have snapped or cracked as this could be due to impact damage.
- (c) Customers should always refer to the operator/instruction manual when any disputed problem arises, you will find most areas covered within the manual.

Protecting your machine

Maintenance

Regular maintenance of your Webb machine is essential to ensure it operates, safely, efficiently and therefore reducing the environmental impact.

It is the owner's responsibility to ensure that their Webb machine is maintained at specific intervals. Any approved Webb service dealer can undertake a service, which are specialised in our products and will be aware of your particular machine and any technical updates which will save valuable time & money.

If you are using your machine in dry, dusty or high temperatures, you will need to service the machine more regularly.

Fuel

Due to ongoing efforts by fuel companies to reduce emissions, unleaded petrol will oxidize & deteriorate in storage overtime, leaving residue from detergent components.

Fuel deterioration problems may occur when petrol is stored for over 30 days. If you are planning to store fuel for over 30 days, we recommend you add Handy Parts Sure-Start fuel stabilizer to fresh fuel after purchasing. Sure-Start cannot reconstitute stale fuel.

Storage

When storing your machine for an extended period, we do recommend that you follow the instructions of engine instruction manual.

Always store the fuel in a clean, approved and sealed container. If the container is steel, ensure it is not corroded.

If the container is not filled to its recommended capacity, air can accelerate fuel deterioration.

Always store fuel away from direct sunlight, in a dark, cool environment.



SERVICE BOOK

Your servicing Webb approved dealer will stamp & date the below relevant sections, when the correct service actions have been completed.

PLEASE ENSURE THE SERVICE BOOK IS AVAILABLE FOR THE DEALER, DURING SERVICE WORK.

1st Service

This must be stamped by an approved service dealer to qualify for a free second year warranty.

12 Months

Date

24 Months

Date

36 Months

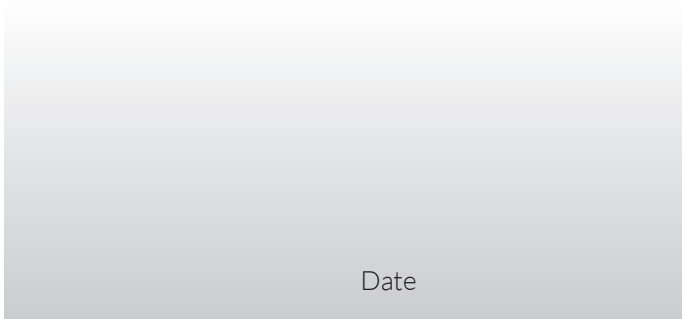
Date



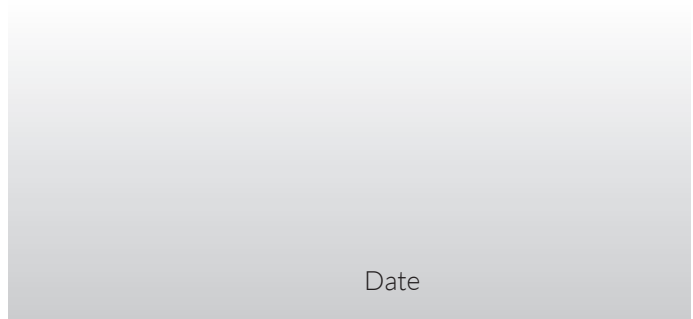


INSTRUCTION MANUAL

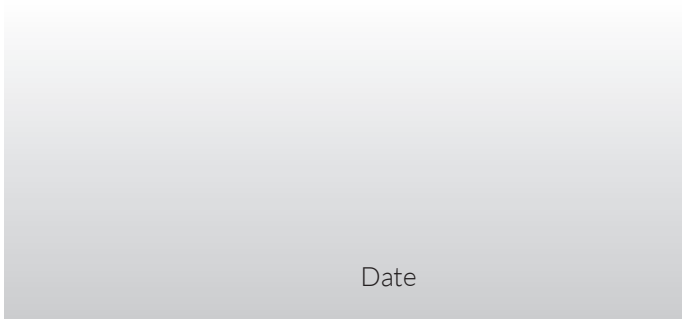
48 Months



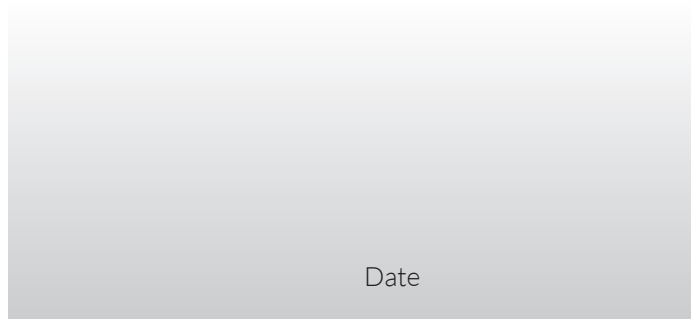
60 Months



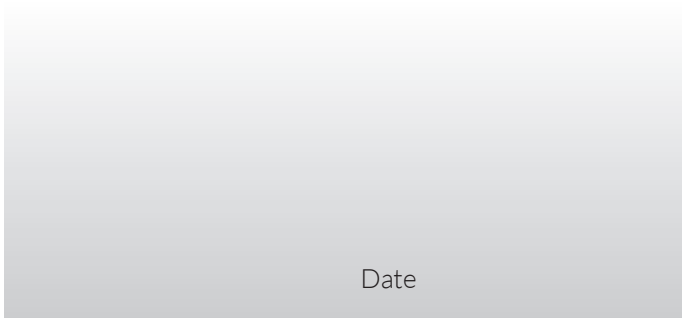
72 Months



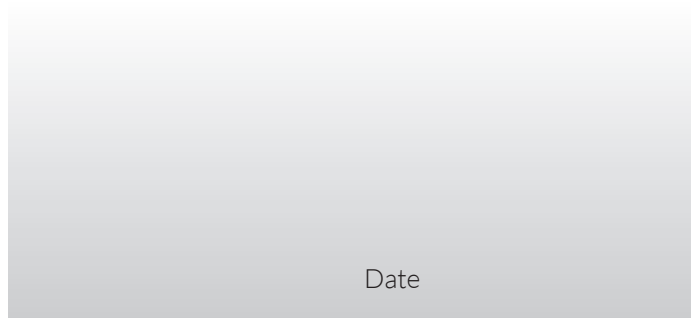
84 Months



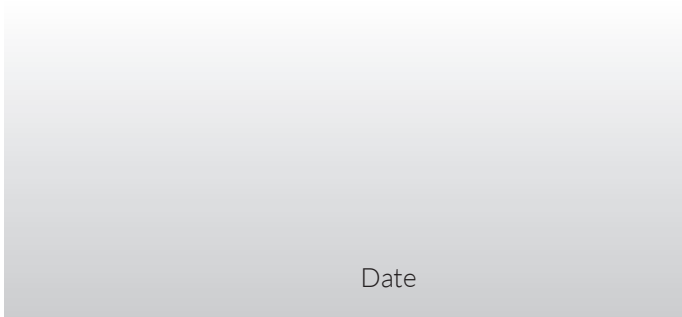
96 Months



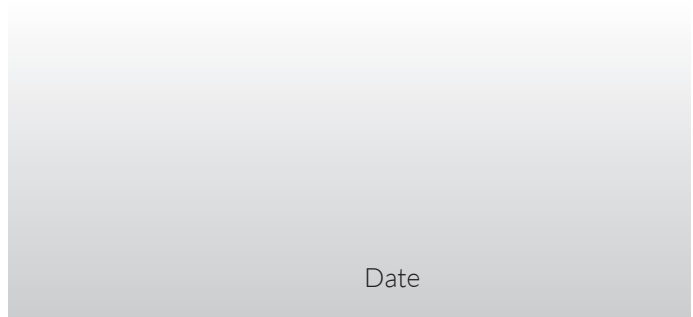
108 Months



120 Months



132 Months





WARRANTY REGISTRATION

If you have registered online, this form is not necessary.
PLEASE POST THIS COPY TO THE ADDRESS OVERLEAF

Product Information (* Compulsory)

*Model No:	
*Product No:	
*Serial No:	
*Date of Purchase:	

Personal Information (* Compulsory)

*Title		*Forename		*Surname	
*House Number		*House Name			
*Address 1					
*Address 2					
*Town					
*County					
*Postcode					

Home Tel		Mobile Tel	
----------	--	------------	--

Email

Age	18 to 25	26 to 35	36 to 45	46 to 60	61 to 80	81 & over
-----	----------	----------	----------	----------	----------	-----------

*Dealer Stamp (Complete Address)

*Selling Retailer (If dealer stamp not available)

*Dealer Name	
*Dealer Address	

*Date of Purchase

*Usage	Domestic Use	Commercial/Professional/Hire Use
--------	--------------	----------------------------------

Webb Lawnmowers privacy commitment to machine owners: Thank you for completing this form. The information supplied, helps us to improve the products & services we provide, including information that we believe is relevant to your and/or your machine. We value your trust by giving us this information about yourself and we are committed to protecting your privacy. From time to time Webb, its associated companies, authorised dealers or third parties working on our behalf may wish to contact you regarding our products, services, offers, technical improvements or just opinions, which may be used for marketing, research or analysis purposes.

If you DO NOT wish to be contacted by either of the following methods, please tick the relevant box POST ☐ TELEPHONE ☐

If you would like us to contact you by Email, please tick this box ☐

You may give Webb Lawnmowers notice in writing at any time that you no longer wish to receive direct marketing communications



Webb Lawnmowers
Murdock Road
Dorcan
Swindon
Wiltshire
SN3 5HY

