



26cc Loop Handle
Petrol Multi Cutter
WEMC26
193868001

Operator's Manual & Parts List

Please read & understand this manual, paying particular attention to the safety instructions, before use.
The manufacturer reserves the right to change the product specification and livery according to continues product improvements.

14 Oct 2016





CONTENTS

SAFETY INSTRUCTIONS

SPECIFICATIONS

COMPONENTS

ASSEMBLY

OPERATION

MAINTENANCE, CLEANING & STORAGE

TROUBLE SHOOTING

PARTS DIAGRAM & LIST

DECLARATION OF CONFORMITY

WARRANTY

For Spares or Support of your Webb product, please contact us:

Tel: 01793 333212

(Mon – Fri 8.30am to 5.00pm)

Email: customerservice@webblawnmowers.co.uk

To view the full range or find out more information go to
www.webblawnmowers.co.uk





INSTRUCTION MANUAL

SAFETY INSTRUCTIONS

Read and understand the owner's manual and labels affixed to the machine. Learn its application and limitations as well as the specific potential hazards. Retain these instructions for future reference. The operator is responsible for following the warnings & instructions in this manual and on the product.

	Read & understand operator's manual before using the machine. Failure to follow instructions could result in death or serious injury.		This graphic and when accompanied by WARNING or DANGER , calls attention to actions which could lead to SERIOUS INJURY
	Always wear eye and ear protection		
	Always wear gloves to protect your hands. SHARP RECIPROCATING BLADES		Wear foot protection or sensible shoes when using the machine
	WARNING Never modify a machine in any way. Incorrect use of a machine can cause SERIOUS OR FATAL PERSONAL INJURY		Keep all bystanders & animals at least 15 metres away from the machine during operation. If approached, stop the machine immediately.
	No smoking		Risk of Carbon Monoxide Poisoning. Ensure working area is correctly ventilated.
	Moving Parts Rotating parts can contact or entangle hands, feet, hair, clothing or accessories. Traumatic amputation or severe laceration can result		Hot Surface. Running engines produce heat. Engine parts, especially the exhaust, become extremely hot. Severe thermal burns can occur on contact
	Fire Risk Fire and its vapors are extremely flammable & explosive. Fire or explosion can cause severe burns or death.		Always TURN OFF THE ENGINE , ensuring the cutting tool has stopped, before cleaning, removing or adjusting the blade.



Safety alert symbol. Used to alert you to potential personal injury hazards. Obey all safety messages that follow this symbol to avoid possible injury.



DANGER

Indicates an imminently hazardous situation which, if not avoided, will result in serious injury.



WARNING

Indicates a potentially hazardous situation which, if not avoided, could result in serious injury



CAUTION

Indicates a potentially hazardous situation which, if not avoided, may result in minor or moderate injury.

CAUTION

Used without the safety alert symbol indicates a potentially hazardous situation which, if not avoided, may result in property damage.



STAY ALERT

Do not operate the machine while under the influence of drugs, alcohol, or any medication that could affect your ability to use it properly. Do not use this machine when you are tired or distracted from the job at hand. Be aware of what you are doing at all times. Use common sense.

AVOID DANGEROUS CONDITIONS

Make sure there is adequate surrounding workspace. Cluttered areas invite injuries.

Keep your work area clean with sufficient light. Keep area around the machine clear of obstructions, stones, sticks, wires and other debris or foreign bodies which could cause damage to the machine.

DO NOT SMOKE, whilst using the machine.

INSPECT YOUR MACHINE

Check all bolts, nuts, and screws for tightness before each use, especially those securing guards and drive mechanisms. Vibration during use may cause these to loosen.

Replace damaged, missing or failed parts before using.

Warning labels carry important information.

Replace any missing or damaged warning labels.

DRESS PROPERLY

Do not wear loose clothing, gloves, scarfs, neckties or jewelry (rings, wrist watches), which can be caught in moving parts.

ALWAYS wear protective eye and ear wear. Appropriate gloves are also recommended.

Wear protective hair covering to contain long hair, preventing it from getting caught in machinery.

DO NOT use whilst barefoot or wearing open toed footwear.

KEEP BYSTANDERS AND CHILDREN AWAY

Keep unauthorised persons or animals a minimum distance of 15 metres away from the mower. Do not allow children to handle, use, or climb on the machine.

DO NOT OVERREACH

Keep proper footing and balance at all times, particularly if using on slopes. The machine should not be used on steep slopes and always be sure of footing.

AVOID INJURY FROM UNEXPECTED ACCIDENT

Keep hands out of the way of moving parts, particularly the engine and rotating cutting tool.

DO NOT FORCE TOOL

Always work within the rated capacity. Do not use the machine for a purpose for which it was not intended. Always use the correct handles and shoulder straps provided with the machine.

MAINTAIN YOUR MACHINE WITH CARE

Clean the machine immediately after use. Keep the machine clean to ensure it operates to its full and safest performance. When maintaining this machine, only the manufacturer's original replacement parts should be used. The use of non-original manufacturer parts may invalidate your warranty.

STORE IDLE EQUIPMENT

When not in use, the machine should be stored in a dry location. Keep the machine away from children and others not qualified to use it. DO NOT STORE FUEL IN THE MACHINE, fuel over 30 days old can become stale and if used, damage the carburetor, which is not covered by the manufacturer's warranty.



INSTRUCTION MANUAL

SPECIFICATIONS

Model	WEMC26
Product Number	193868001
Engine (cc)	25.4
Idle Speed (r/min)	2800
Carburetor	Diaphragm
Fuel Tank Capacity (Litre)	0.70
Fuel Ratio (Petrol:2 Stroke Mineral Oil)	25:1
Total Weight (kgs)	N.W 11.0 - G.W 13.0

	Brushcutter	Line Trimmer	Pruner	Hedgecutter
Cutting Diameter	255mm	430mm		25mm
Cutting Length			254mm	435mm
Chain Bar Length			10 inch	
Shaft	Straight	Straight	Straight	Straight
Blades	3 (Double Sided)			2 (28 Individual)
Blade Diameter	255mm			
Spool Type		Bump Feed, Twin Line		
Line Diameter		2.5mm Only		
Line Length		3m Max		
Net Weight (Empty Tank)	5.7kg	5.98kg	5.9kg	6.6kg
Declared Sound Pressure Level	97dB(A)	97dB(A)	97dB(A)	97dB(A)
Declared Sound Power Level	117dB(A)	117 dB(A)	117 dB(A)	117 dB(A)
Vibration	7.66m/s ²	9.78m/s ²	7.53m/s ²	7.51m/s ²
Max Cutting Speed	9270 RPM	9270 RPM		
Chain Pitch			3/8"	
Chain Links			40	
File Required			5/32"	

The manufacturer reserves the right to change the product specification and livery according to continued product improvements.

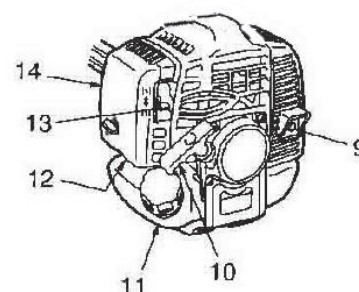
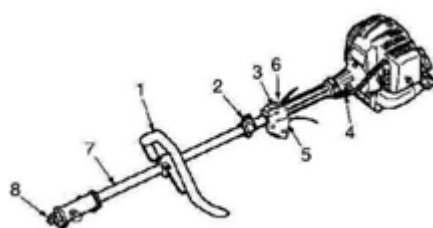


This symbol on the product or on its packaging indicates that this product may not be treated as household waste. Instead it shall be handed over to the applicable collection point for the recycling of electrical and electronic equipment.

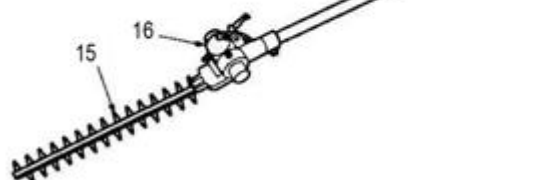
For more detailed information about recycling of this product, please contact your local council office, your household waste disposal service or shop where you purchased the product.

COMPONENTS

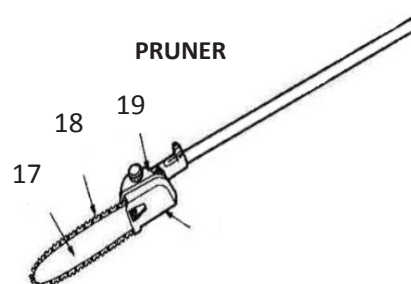
1. D-Handle	2. Harness Eyelet
3. Ignition Switch	4. Throttle Cable
5. Throttle Lever	6. Safety Lever
7. Driveshaft	8. Hand Wheel & Coupler
9. Exhaust	10. Recoil Starter
11. Fuel Tank & Cap	12. Primer Bulb
13. Choke Lever	14. Air Filter Cover
15. Blade	16. Angle Adjuster
17. Guide Bar	18. Cutting Chain
19. Oil Canister	20. Reversible Tri-blade
21. Easy Load Head	22. Guard



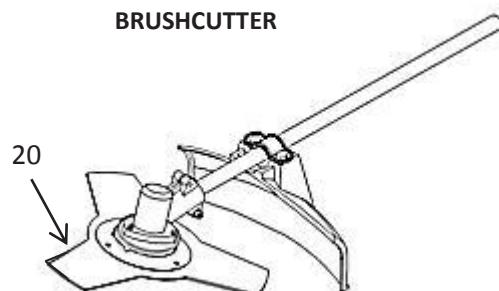
HEDGE TRIMMER



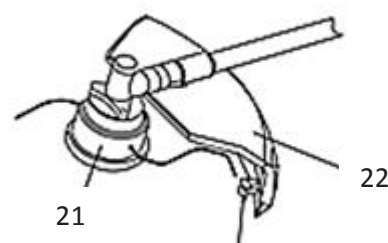
PRUNER



BRUSHCUTTER



LINE TRIMMER





INSTRUCTION MANUAL

ASSEMBLY

Remove the machine and contents from the carton. Be sure the carton is empty before discarding.

If you require any assistance with regards to the contents of the lawnmower contact us:

Tel: 01793 333212 - Mon – Fri 8.30am – 5.00pm (excl. Bank Holidays)

Email: customerservice@webblawnmowers.co.uk

MACHINE

FITTING D-HANDLE

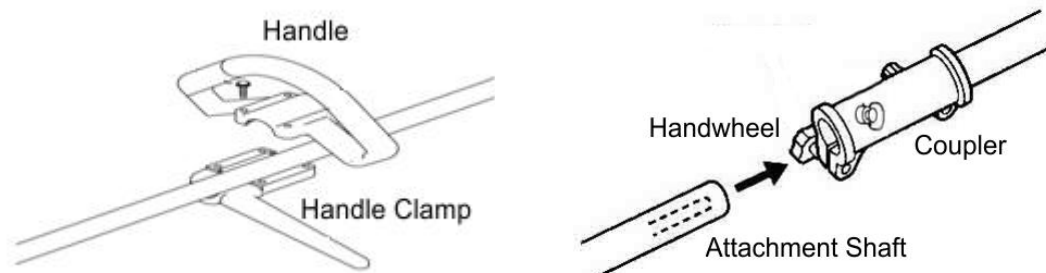
1. Place top handle onto driveshaft.
2. Position lower handle, beneath the top handle in a comfortable operating position
3. Tighten the four fixing screws.

FITTING THE HARNESS

1. Place the clasp of the harness, through the Harness Eyelet located on the driveshaft
2. Adjust the Harness to ensure it is comfortable, but tight enough to allow you to operate the machine appropriately.

JOINING ATTACHMENT TO THE POWER UNIT

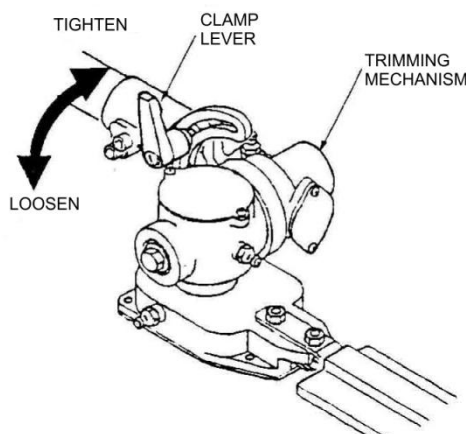
1. Untighten the hand-wheel, located on the coupler.
2. Line up the attachment shaft with the coupler and insert, pulling the locking pin on the coupler out to house the attachment.
3. When fully housed, secure by tightening the hand-wheel.



HEDGE TRIMMER

ADJUSTING THE CUTTING HEAD ANGLE (Fig 3)

1. Stop the engine
2. Turn the clamp lever anti-clockwise to loosen
3. Adjust the blade to the required angle, by moving the clamp level up or down the angle adjuster.
4. Turn the clamp lever clockwise to tighten.





LINE TRIMMER & BRUSHCUTTER

FITTING GUARD/SHIELD

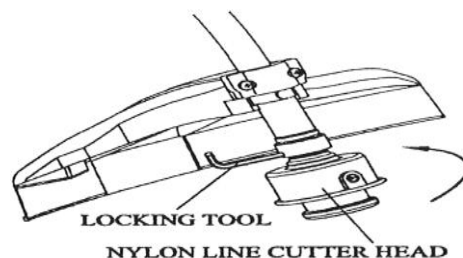
1. Install the safety cover onto the shaft with the safety cover bracket.
2. Align the four screws of the cover with the safety cover bracket
3. Tighten the screws after setting the safety cover bracket at the appropriate position.



LINE TRIMMER

FITTING NYLON LINE CUTTING HEAD

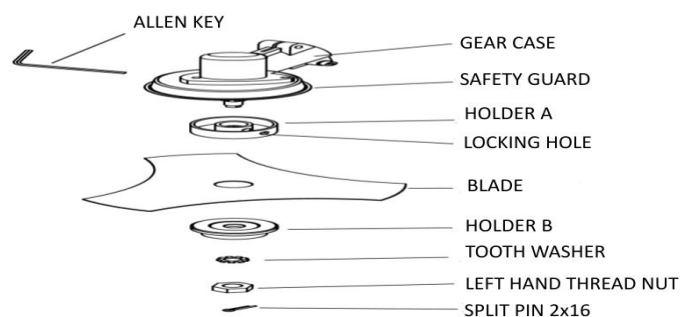
1. Align hole in adapter plate with hole in the shaft and install Allen Key.
2. Thread cutter head onto shaft (turning it anti-clockwise) until it is tight. Remove locking tool.



BRUSHCUTTER

FITTING THE METAL BLADE

1. Install holder A, the blade, holder B, teeth washer, in this order
2. Then clamp with the left-hand thread nut.
3. Align hole of gear case and holder A, and insert Allen Key.
4. Rotate blade-fastening nut with spanner in clockwise direction until securely tightened.
5. Install the Pin 2x16 and split legs to secure.



WARNING

EXCESSIVE VIBRATION OF THE BLADE INDICATES IT HAS NOT BEEN INSTALLED CORRECTLY. STOP THE ENGINE IMMEDIATELY, CHECK THE BLADE INSTALLATION AND RE-INSTALL CORRECTLY. AN INCORRECTLY INSTALLED BLADE CAN CAUSE INJURY.





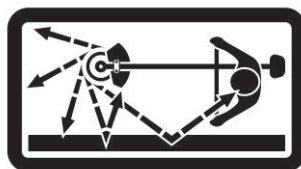
INSTRUCTION MANUAL

OPERATION



DANGER

All Hedge Trimmers can throw debris, metal or small objects as well as material being cut. Do not allow anyone to enter the operating DANGER ZONE with you. The danger zone is an area 15 metres in radius. Insist that persons in the RISK ZONE beyond the danger zone wear eye protection from thrown objects. If the unit must be used where there are unprotected people, operate at a low throttle speed to reduce the risk of thrown objects.



DANGER ZONE WITHIN 15 METRES - RISK ZONE GREATER THAN 15 METRES

GENERAL USE



WARNING

Prior to using the machine, ensure all hardware (bolts, screws & nuts) are securely tightened.

- ☑ Operate the trigger with your right hand & hold the D-Handle with your left hand.
- ☑ The trigger increases and decreases the power of the engine to the attachment, increasing the revolution/reciprocation of the attachment.

WORKING PLAN

- ☑ Limit the amount of time the product is used continuously to a maximum of 40 minutes per session.
- ☑ Leave the machine to rest between sessions for between 10-20 minutes.
- ☑ Total amount of work performed per day with the machine, should be limited to 120 minutes maximum.
- ☑ Continuous use of the machine can cause "Repetitive Stress Injury (RSI)". If you feel discomfort, redness or swelling of your hands and fingers or any other body part, consult your doctor.
- ☑ Check local regulations for sound level and hours of operation constraints.
- ☑ Never transport the machine, whilst the engine is running.

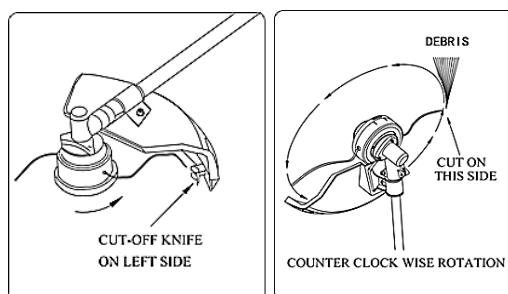
LINE TRIMMER

- ☒ Always keep a firm grip with both hands during operation
- ☒ The machine should be held at a comfortable position, with the trigger handle at hip height. Adjust the harness to suit.
- ☒ Maintain a firm footing in case the machine hits a solid object & kicks back
- ☒ Cut tall grass from the top down to prevent grass wrapping around the shaft housing & strong head, which may cause overheating and damage. If grass becomes entangled, stop the engine completely and remove the grass.

The line trimmer head rotates in an ANTI-CLOCKWISE direction. The knife, located on the left side of the guard, ensures your nylon line is operating at the correct length for optimum trimming.

NOTE: Nylon line which is too long or the incorrect diameter (Recommended 2.5mm), will cause excess wear to the engine and clutch components, not covered by the manufacturer's warranty.

It is recommended that the head is tilted, so the nylon line cutting circle is moving away from the user and guard/shield. This will enable debris to be thrown away from the user.



TRIMMING

This is feeding the trimmer carefully into the material you wish to cut. Tilt the head slowly to direct debris away from you. If cutting up to a barrier such as fence, wall or tree, approach from an angle where any debris ricocheting off the barrier, will fly away from you. Move the line head slowly until the grass is cut right up the barrier, but do not jam (over-feed) the line into the barrier

If trimming up to a wire mesh or chain linked fence, be careful to feed only up to the fence. If you go too far, the line will snap off around the fence.

Trimming can be done to cut through weed stems one at a time. Place the trimmer line head near the bottom of the weed, never high up, which could cause the weed to chatter and catch the line. Rather than cut the weed right through, just use the very end of the line to wear through the stem slowly.

SCALPING AND EDGING

Both of these are done with the line head tilted at a steep angle.

Scalping is removing top growth leaving the earth bare.

Edging is trimming the grass back where it has spread over a path or driveway.

During edging and scalping, hold the unit at a steep angle and in a position where the debris and any dislodged dirt and stones will not come back towards you, even if it ricochets off the hard surface.



WARNING

DO NOT use a metal blade for scalping or edging



WARNING

DO NOT trim any area where there maybe strands of fencing wire. Do not cut where you cannot see what the cutting tool is cutting.



INSTRUCTION MANUAL

BRUSHCUTTER

- ☒ Always keep a firm grip with both hands during operation
- ☒ The machine should be held at a comfortable position, with the trigger handle at hip height. Adjust the harness to suit.
- ☒ Maintain a firm footing in case the machine hits a solid object & kicks back.
- ☒ Do not use the metal blade near fencing, posts, buildings or other immovable objects – use the nylon head.
- ☒ Best results are obtained if you cut from right to left, in a broad sweeping motion.
- ☒ If a hard object is struck, immediately stop the machine and inspect for damage.



WARNING

DO NOT use the put the metal blade into contact with Utility Wires, Metal Stakes, Rubber, Masonry, Rocks, Fences, and Trees.



DANGER

DO NOT cut with a dull, cracked or damaged metal blade.

Before cutting, inspect for obstructions. If an obstruction cannot be removed, mark its location clearly so you can avoid it during operation.

Rocks & metal can dull or damage a blade. Wires can wrap around the blade head or be thrown in the air.

SCYTHING WEEDS

This is cutting by swinging the blade in a level arc. It can quickly clear areas of field grass and weeds. Scything should not be used to cut large, tough weeds or woody growths.

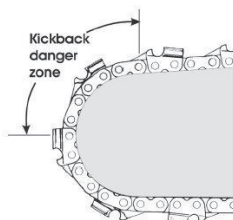
Scything can be done in both directions, or just in one way which results in the debris being thrown away from you. This is done by using the side of the blade that it is rotating away from you. Tilt the blade downwards slightly, on this same side. You will be hit by some debris if you scythe in both directions

PRUNER



WARNING

The Pruner is supplied with a low KICKBACK chain, however sometimes kick back can occur, so always hold the unit firmly in two hands. The Kickback danger zone on your Pruner is the upper part of the nose of the guide bar. Never saw using this part of the guide bar, which poses a significant risk for kickback.

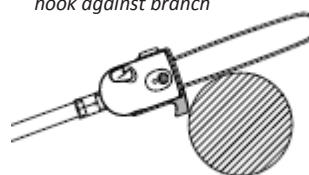


- ☒ Position the hook located on the bottom of the head against the branch, to reduce the risk of the pruner jerking forward.
- ☒ Ensure the chain is running in the correct direction.

Top
Cutting
Direction

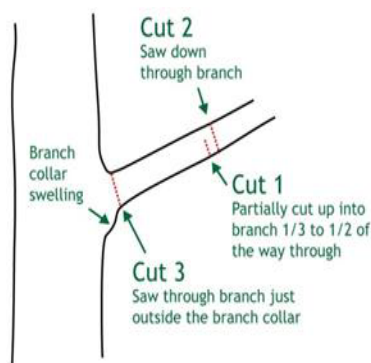


Position cutting
hook against branch

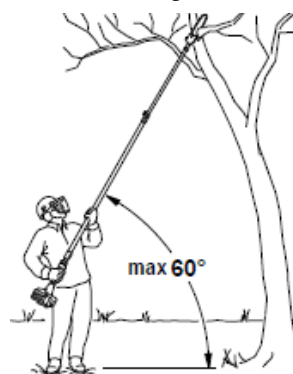


- ☒ Thin branches can be removed with a single cut, but if the branch is long, it is preferable to cut it in several pieces, moving towards the main trunk of the tree.
- ☒ Always check for any damage before each use and replace a damaged chain immediately, with an approved replacement part.
- ☒ Before every use, check the level of the chain oil in the reservoir.
- ☒ During use, check the tension of the chain. (See Maintenance Section For Instruction)
- ☒ Always fit the supplied blade guard when the Pruner Attachment is not in use.
- ☒ For larger branches, the 3-point method should be used to prevent breakage.
- ☒ Do not work at an angle, higher than 60 degree's, there is a danger of being injured by branches falling without warning. Also be careful not to trip over grounded branches.

3-point cutting method for larger branches



Do not work at an angle over 60 degree's

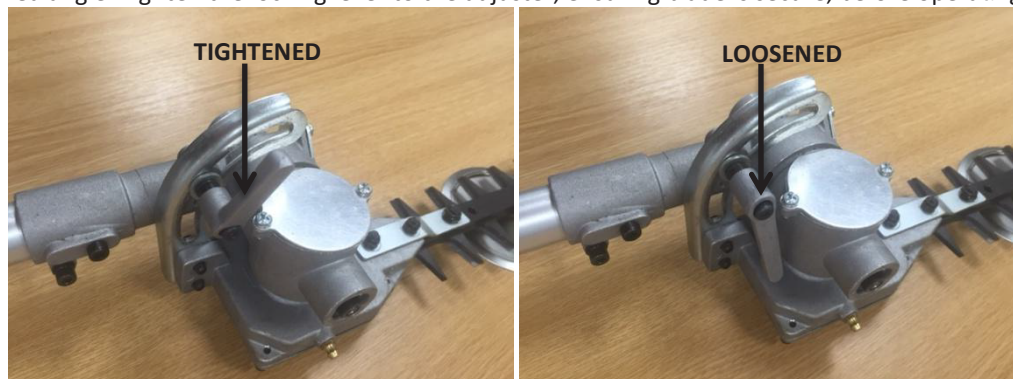




INSTRUCTION MANUAL

HEDGE CUTTER

- ☒ To adjust the angle of the Hedgecutter, loosen the locking lever; rotate the Hedgecutter head to the desired angle. Tighten the locking lever to the adjuster; ensuring blade is secure, before operating.



- ☒ Always have a firm footing and use two hands to hold the machine
- ☒ It is advisable to cut a hedge from the bottom up, sweeping the cutter head in an arc as you move along the hedge. The double edged cutter blades allow cutting of your hedge in both directions.
- ☒ To cut the top of the hedge, adjust the cutter head to a horizontal position. Hold the cutter head at an angle of 0-10 degrees as you sweep the head in an arc across the top of your hedge, towards the outside to allow cuttings to fall to the ground.
- ☒ Pay special attention to hedges which are positioned along wire fencing. If the cutting blades make contact with the fence, damage may occur.
- ☒ Do not use the Hedgecutter Attachment for periods greater than 45 minutes. Take a break for 10-15 minutes or after using one tank of fuel.
- ☒ If the blade comes into contact with a stone, wire or other foreign object, stop immediately and check for any damage to the blades immediately.
- ☒ Do not attempt to remove any twigs or branches jammed in the cutter blades, without first turning the engine off.
- ☒ Always check for any damage before each use and replace a damaged blade immediately, with an approved replacement part. A
- ☒ Always fit the supplied blade guard when the Hedgecutter Attachment is not in use.

FUEL & OIL MIXTURE



Fuel & its vapors are very flammable. Do not use or fuel the machine near a flame, sparks or while smoking. Allow the engine to cool for more than 2 minutes, before re-fueling. Never fuel the machine with the engine running. Fuel the engine at least 3 metres away from your work area. Always fuel your machine outdoors.

- ☒ Use good quality unleaded fuel which contains NO ETHANOL or METHANOL. Use Branded 89 octane or higher unleaded fuel, known to be of good quality.
- ☒ Fuel which is older than 30 days old can become stale and cause acid & gum deposits in the fuel system or essential carburetor components. This could result in starting issues which **would not be covered by your manufacturer's warranty.**

To keep fuel fresh, we recommend you use **Handy Parts – Sure Start Garden Machinery Fuel Additive** which is available in 250ml bottles, for 25 litres of fuel.

- ☒ Helps makes machines easier to start
- ☒ Extends shelf life of petrol up to 2 years
- ☒ Keeps carburetor & engine clean
- ☒ Reduces emissions & increases fuel economy
- ☒ Only use 2-stroke air cooled engine oil. DO NOT USE automotive or marine oil.
- ☒ It is recommended that you use a Fuel Mixing Bottle, to ensure the correct fuel mixture is used with your machine. We recommend Handy Parts item HP-120. The fuel mixture should be shaken prior to entering the machine fuel tank.
- ☒ Mix only the quantity you require to complete your specific task.

Fuel Mixture Ratio - 25:1 (Unleaded Petrol 25:1 2-stroke Mineral Oil)
If using Synthetic or Semi Synthetic Oil, consult the Oil manufacturers instructions

25:1 Fuel Mixture Ratio

Unleaded Petrol – litre	Two-Stroke Mineral Oil - ml
1	40
2	80
3	120
4	160
5	200

- ☒ Unscrew the machine fuel cap slowly and fill the fuel tank with your fuel mixture to a maximum of 80% capacity. This will allow for fuel tank expansion.
- ☒ Fasten the fuel cap tightly, being careful not to cross-thread. This will also prevent loosening through vibration during use.
- ☒ Wipe away any spillage, with an appropriate material.
- ☒ If the machine has continued leaks, the product should not be started. Never use the machine with damaged ignition cable or spark plug cap, as there is a risk of sparks.

IMPORTANT

- ☒ Ensure that any stored petrol/oil mixture is clearly marked in a separate appropriate canister for a maximum of 4-6 weeks.
- ☒ If the machine is not going to be used for a long period, drain the mixture from the fuel tank, start the engine and drain the carburetor of any remaining fuel. (See Maintenance for further instruction)
- ☒ Dispose of any unwanted 2-stroke mixture at an authorised recycling point.



INSTRUCTION MANUAL

ENGINE STARTING & STOPPING PROCEDURE

STARTING A COLD ENGINE

1. Place the machine onto a flat, firm surface.
2. Keep the cutting head off of the ground and clear of any surrounding objects
3. Move the stop switch to "START" position
4. Give a gentle push on the primer pump repeatedly (7-10 times) until fuel comes into the primer pump.
5. Pull the Choke Lever up to close the choke
6. Whilst holding the machine down with your left hand, away from the engine and pull the engine recoil starter rope vigorously, until the engine false starts.

(DO NOT LET THE RECOIL STARTER ROPE RETRACT BY ITSELF, FEED THE ROPE BACK INTO THE HOUSING)

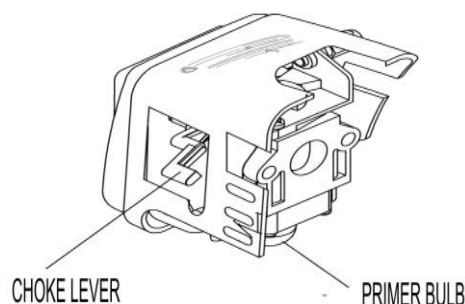
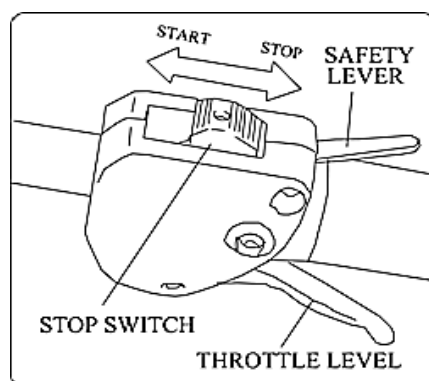
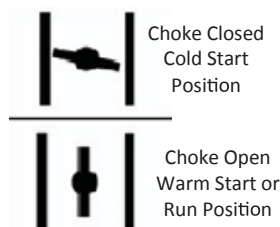
7. Push the choke lever downwards (excessive cranking with choke lever up will cause the engine to flood, making it difficult to start.)
8. Pull starter handle until engine starts.
9. Allow engine to warm up for a few minutes before using.

STARTING A WARM ENGINE

1. Move the switch to "START" position
2. If the fuel tank was run dry on previous operation, follow steps 3-7 of cold start procedure.
3. Whilst holding the machine down with your left hand, away from the engine and pull the engine recoil starter rope vigorously, until the engine false starts.

STOPPING THE ENGINE

1. Move the stop switch to the "STOP" position



WARNING

Do not cut where you cannot see what the cutting tool is cutting. DO NOT use the put the metal blade into contact with Utility Wires, Metal Stakes, Rubber, Masonry, Rocks, Fences, and Trees.



DANGER

DO NOT cut with a dull, cracked or damaged blade. Before cutting, inspect for obstructions. If an obstruction cannot be removed, mark its location clearly so you can avoid it during operation. Rocks & metal can dull or damage a blade. Wires can wrap around the blade head or be thrown in the air.



MAINTENANCE, CLEANING & STORAGE



WARNING

Improper maintenance & storage of the machine may void your warranty. Keep the machine clean for better and safer performance.

MAINTENANCE

- ☑ Before each use, check all nuts & bolts to be sure they are sufficiently tightened.
- ☑ We recommend only manufacturer original parts are used when maintaining this machine. Failure to do so could invalidate your manufacturer's warranty.
- ☑ The engine must be switched off, with the spark plug cap removed, before the machine is unassembled, cleaned, serviced or maintained.

POWER UNIT

ADJUSTING CARBURETOR

Do not adjust carburetor unless necessary. If you have trouble with the carburetor, see your dealer. Improper adjustment may cause engine damage and void warranty.

SPARK PLUG

- ☑ Do not attempt to remove the plug from a hot engine in order to avoid possible damage to the threads.
- ☑ Clean or replace the plug if fouled with heavy oily deposits.
- ☑ Replace the plug if the center electrode is worn or rounded at the end.
- ☑ The spark gap should be 0.6-0.7mm (.023".028")

HEDGECUTTER

BLADES

The cutting blades can be protected and kept lubricated by periodically applying Maintenance Lubricating Oil.

If a gap exists between the upper & lower blades, follow the below steps to adjust them, so that they are closer together and cutting to their optimum performance.

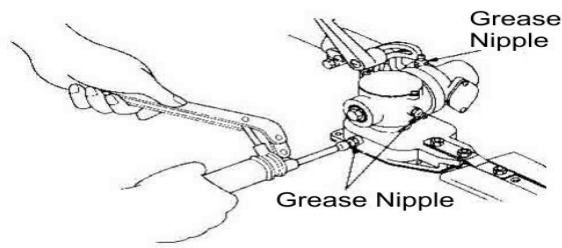
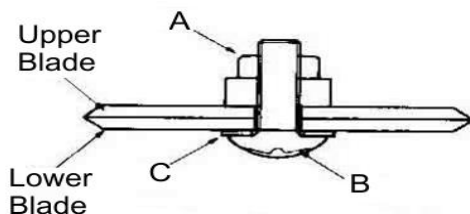
- ☑ Loosen locknut (A) as shown below, with a spanner.
- ☑ Tighten screw (B) fully, and then loosen by a half rotation with a screwdriver.
- ☑ While holding the screw in position with a screwdriver, tighten the locknut with a spanner.
- ☑ Check to make sure, flat washer (C) is loose enough to be turned by your finger.

Tightening the screw too tightly may make it impossible for the blades to move. Conversely, not tightening the screw sufficiently may make the blades feel dull and cause leaves and branches to become caught in the blades.

GEAR CASE

The gears are lubricated by Multi-purpose Lithium based grease in the gear case. Input new grease **EVERY 25 HOURS** of use or more often, depending on the use conditions.

When adding lubricant, use a grease gun to insert the grease into the three grease nipples located on the gear case.



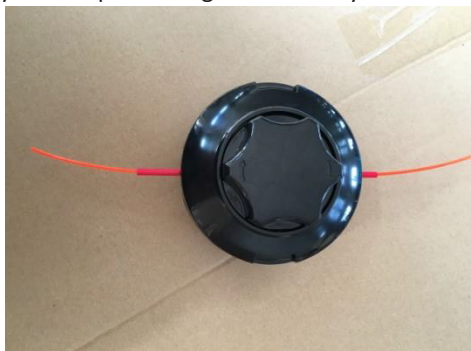


INSTRUCTION MANUAL

LINE TRIMMER

REPLACING YOUR NYLON LINE

1. Cut 3 metres of 2.5mm diameter Nylon Line.
2. Align the arrows on the feed/bump knob with the eyelets.
3. Feed the line into the feed pipe (supplied).
4. Feed the feed pipe & line in through the first eyelet and out of the second eyelet.
5. Remove the feed pipe and put in a safe place.
6. Pull the nylon line until you have two equal lengths.
7. Now rotate the feed/bump knob **CLOCKWISE**, to wind the nylon line into the head.
8. Stop when you have 150mm of nylon line protruding from both eyelets.



PRUNER

CHAIN TENSION

Periodically during use, check the tension of the chain. It is important to maintain proper chain tension. Incorrect chain tension can cause the guide bar to wear and the chain to come off. To check the chain tension:

- ☒ Switch the engine off
- ☒ Wear work gloves
- ☒ The chain must fit snugly against the underside of the guide bar.
- ☒ You should be able to pull the chain away from the guide bar, 5-6mm or pull the chain along the guide bar by hand.

A new chain has to be tensioned more often than an older chain that has been used for some time.

CHAIN TENSIONER



CHAIN SHARPENING

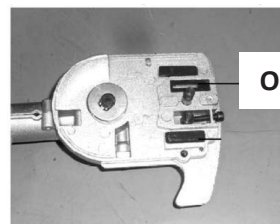
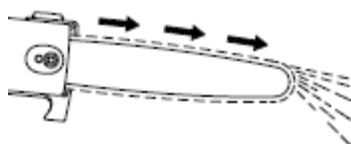
A well sharpened chain will provide many cuts, with very little effort. Do not work with a dull or damaged chain, due to it increasing the effort required from the user, provide poor results and a higher rate of wear. Please regularly:

- ☒ Clean the chain
- ☒ Check for cracks in the link and damaged rivets
- ☒ Replace damaged or worn components of the chain and ensure new parts match the specification of the original chain.
- ☒ If your chain needs sharpening, a 5/32" chain file should be used. We recommend the use of Handy Parts HP-106 or alternatively, contact your local Approved Dealer to undertake the sharpening. Incorrectly sharpened chains can increase the risk of Kickback, with resulting injuries.
- ☒ A new chain should be broken in for about 2-3 minutes. After this period of time, check the chain tension.

CHAIN LUBRICATION

For effective and reliable operation of your Pruner Attachment, ensure you use specifically formulated and designed Chainsaw Oil. Never use a chain without lubrication, if used dry the attachment could be irretrievably damaged within a short time.

- ☒ To fill the oil tank, thoroughly clean the oil filler cap and the area around it to ensure that no dirt falls inside the tank. Position the attachment so that the tank opening faces up. Fill with chain oil, being careful not to spill or overfill. Clean up any overspill.
- ☒ To check that the chain is being lubricated sufficiently, it must always throw some oil off. Run the machine at medium speed over cardboard or newspaper. The machine will deposit oil onto the cardboard or newspaper if operating correctly.
- ☒ After each use clean any oil or saw dust out of the area under the plastic cover with a brush or compressed air. Be especially sure to clean out the oil duct.



Oil Duct



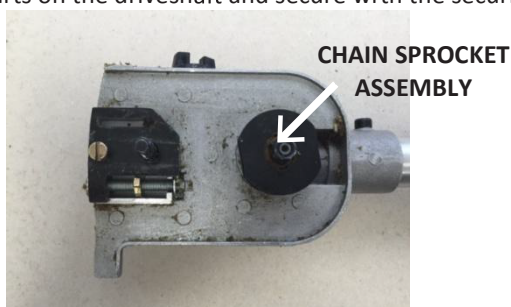
INSTRUCTION MANUAL

GUIDE BAR

- ☒ Turn the Guide Bar over, each time you sharpen or replace the chain. This will help prevent one sided wear, especially at the nose & underside of the bar.
- ☒ Regularly clean the bar, especially the chain groove.

CHAIN SPROCKET

- ☒ After every second chain is replaced, the drive sprocket should also be replaced. To change the drive sprocket, remove the securing nut from the driveshaft, followed by the drive sprocket. If difficult to remove, try using a penetrating lubricant. Reposition the replacement parts on the driveshaft and secure with the securing nut.



CLEANING

Keep your machine clean.

Thoroughly clean the machine at the end of each use, paying particular attention to cuttings in and around the guard and cutting tool.

AIR FILTER

- ☒ Accumulated dust in the air filter will reduce engine efficiency. Increase fuel consumption and allow abrasive particles to pass into the engine. Remove the air filter as often as necessary to maintain in a clean condition.
- ☒ Light surface dust can readily be removed by tapping the filter. Heavy deposits should be washed out in suitable solvent.
- ☒ Remove the filter cover by loosening air filter cover knob.

FUEL FILTER

- ☒ The fuel tank is fitted with a filter. It is situated at the free end of fuel pipe and can be picked out through the fuel filler neck, with a piece of hooked wire or similar.
- ☒ Check the fuel filter periodically. Do not allow dust to enter into the fuel tank. A clogged filter will cause difficulty in starting the engine or abnormalities in engine performance.
- ☒ When the filter is dirty, replace the filter.
- ☒ When the inside of the fuel tank is dirty, it can be cleaned by rinsing the tank out with petrol.

STORAGE

- ☒ For years of trouble free service, make sure the machine is clean and dry before storing.
- ☒ Before storing, clean the machine thoroughly as indicated above.
- ☒ Store indoors or in a safe, locked protected area during severe weather and winter months.
- ☒ DO NOT STORE in an enclosed area, where fuel vapors can reach an open hot flame.
- ☒ DO NOT STORE fuel in the machine. Ensure fuel is removed from the fuel tank and carburetor.
- ☒ If storing for an extended period, inspect, clean and repair the machine if necessary. Remove all fuel from the fuel tank. Start the engine, this will remove all fuel from the carburetor and fuel lines. Remove the spark plug, pour a small quantity of 2-stroke oil into the spark plug hole of the cylinder and re-seat spark plug. Store in a clean, dry, dust free area.

DO NOT STORE fuel for longer than 30 days. Fuel can become stale and cause damage to the engine carburetor, which is not covered by the machines manufacturer's warranty.

TROUBLE SHOOTING

Failures such as a difficulty in starting the engine, irregularity in functions and abnormality in performance can normally be prevented if careful attention is paid to all operating instructions & maintenance procedures.

Should the engine not function properly, check the following?

- ☒ That the fuel system is in good condition and fuel is flowing to the engine.
- ☒ The ignition system is in good condition and the spark plug, sparks correctly.
- ☒ Compression of the engine is adequate. (service dealer assistance required to diagnose)

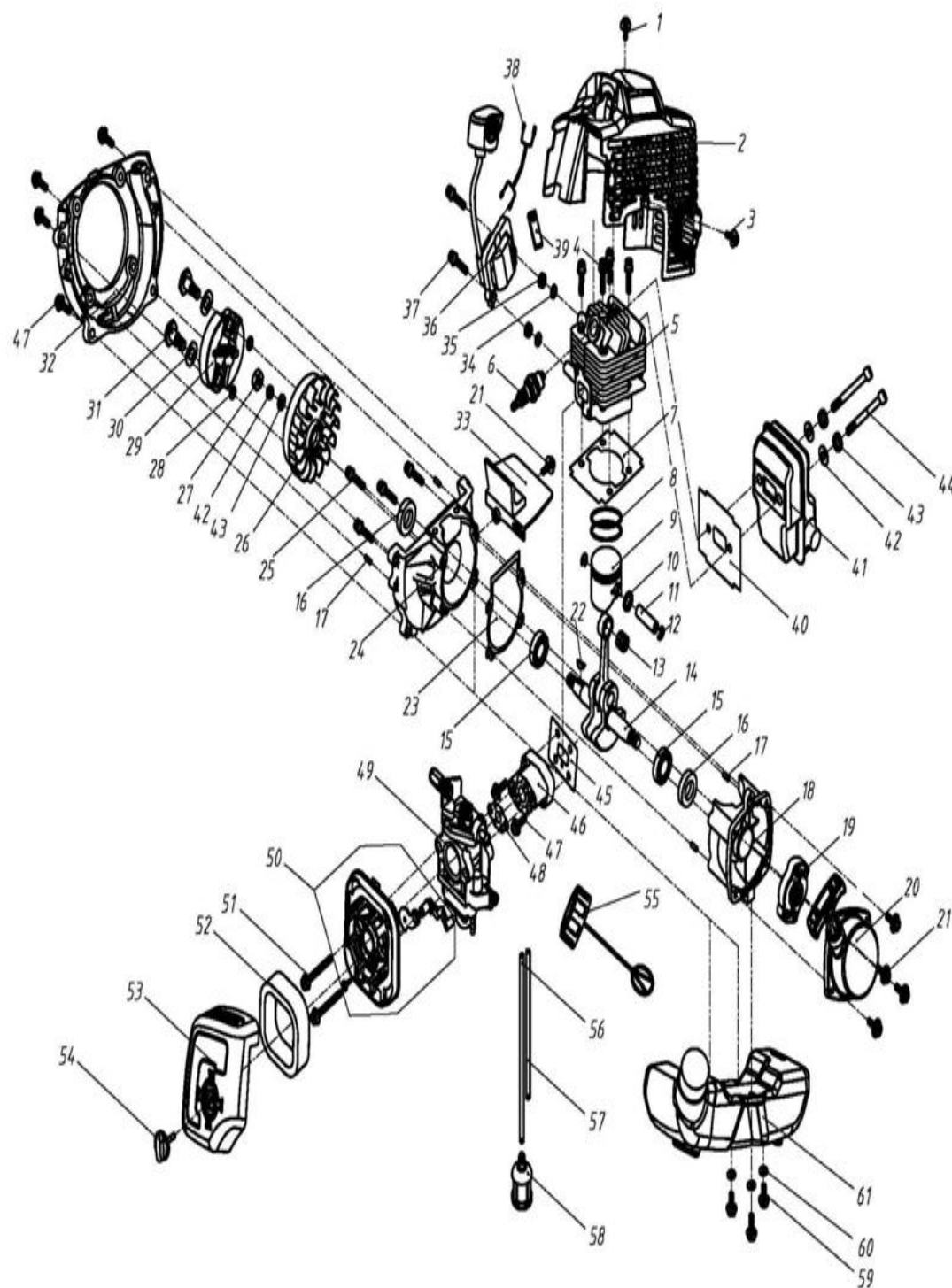
FAILURE TO START

- ☒ Correctly follow the starting procedure, not setting the choke lever or priming the engine can cause it not start.
- ☒ Ensure that fuel is fresh and clean. Dispose of fuel from the tank, particularly if over 30 days old.
- ☒ Install a new, properly gapped spark plug.
- ☒ When there is serious trouble with the unit, have your local approved service dealer inspect it for you.

POWER UNIT - PROBLEM	POSSIBLE CAUSE	SOLUTION
Non Start, Power Loss or Sudden Stop	<ol style="list-style-type: none"> 1. Fuel Tank Empty 2. Mixture not reaching carburetor 3. Water in fuel mixture 4. The Air Filter is dirty 5. Carbon deposits in cylinder or exhaust. 	<ol style="list-style-type: none"> 1. Add Fuel 2. Drain & rinse mixture from fuel system 3. Clean Fuel Filter 4. Clean Air Filter 5. Clean all affected parts or change exhaust
Engine runs but head not rotating	Possible clutch failure	Take to authorised service/repair dealer
Power Unit is smoking	Incorrect fuel/oil mixture	Drain tank & use 40 parts unleaded fuel to 1 part mineral oil (40:1). For semi & synthetic oils, us manufacturer ratios
Idle is lumpy or attachment rotating without trigger depressed	Fuel Mix/Idle Screw is incorrectly adjusted	Take to authorised service/repair dealer
LINE TRIMMER - PROBLEM	POSSIBLE CAUSE	SOLUTION
Line will not advance	<ol style="list-style-type: none"> 1. Line is welded to itself 2. Insufficient line on spool 3. Line has worn too short 4. Line is tangled in spool 	<ol style="list-style-type: none"> 1. Lubricate with silicone spray 2. Add more line 3. Bump head on ground to feed line. 4. Remove line from the spool & rewind
Trimmer head is difficult to rotate	Build up of grass or grass wrapped around head	Clean head by removing grass
Grass wrapping around attachment shaft & head assembly	Cutting tall grass at ground level	Cut tall grass in stages, from the top down
PRUNER - PROBLEM	POSSIBLE CAUSE	SOLUTION
Difficult to cut branches	Chain is blunt	Change chain or arrange for sharpening
Chain is smoking	Lack of lubrication	<ol style="list-style-type: none"> 1. Check that oil duct is clear 2. Top up the oil canister with chain oil
Chain not rotating	<ol style="list-style-type: none"> 1. Chain too tight 2. Chain Sprocket faulty 	<ol style="list-style-type: none"> 1. Adjust chain tension 2. Replace
HEDGE CUTTER - PROBLEM	POSSIBLE CAUSE	SOLUTION
Blades not reciprocating	<ol style="list-style-type: none"> 1. Blades fused by sap 2. Gear head issue 	<ol style="list-style-type: none"> 1. Lubricate with Multi-purpose spray and leave to soak 2. Take to authorised service/repair dealer
BRUSH CUTTER - PROBLEM	POSSIBLE CAUSE	SOLUTION
Vibration through machine	Blade has been incorrectly assembled	Strip down blade assembly, follow instructions.



PARTS DIAGRAM - WEMC26 Engine

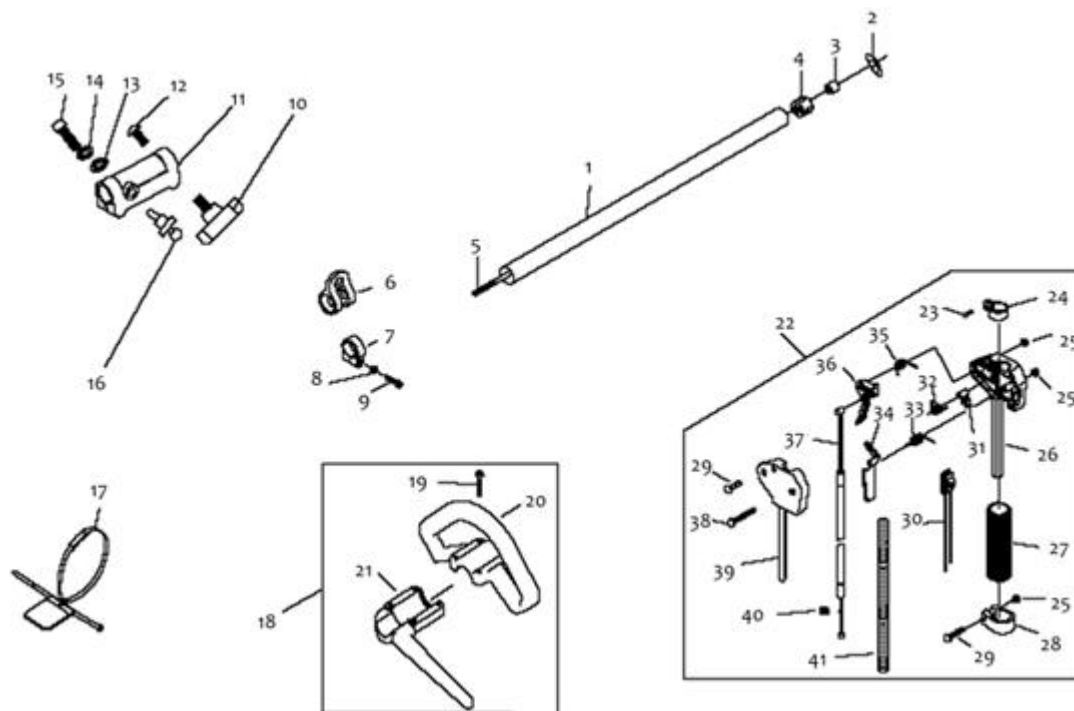


PARTS LIST - WEMC26 Engine

Item No.	Part No.	Description	Qty	Item No.	Part No.	Description	Qty
1	WE03010110121	Screw M5x12	1	32	WE70070030026	Cover	1
2	WE70030030853	Engine Cowling	1	33	WE70030030164	Guide	1
3	WE03020020055	Screw GB/T9074.4 M4x12	1	34	WE03040020012	Washer GB/T97.1 4	2
4	WE03010010062	Screw M5x20	4	35	WE02070010048	Spacer	2
5	WE70070130069	Cylinder	1	36	WE02050030229	Ignition Coil	1
6	WE03130010013	Spark Plug RCJ6Y	1	37	WE03020020054	Bolt GB/T9074.4 M4*20	2
7	WE02070010032	Cylinder Gasket	1	38	WE02050050213	Electrical Connections	1
8	WE02020020003	Piston Ring	2	39	WE02080030042	Rubber	1
9	WE02010020005	Piston	1	40	WE02070010162	Exhaust Gasket	1
10	WE02020150002	Stop Ring	2	41	WE02050010138	Exhaust	1
11	WE02020010004	Piston Pin	1	42	WE03050010008	Washer GB/T93 8	1
12	WE02020030017	Piston Pin Retainer	2	43	WE03040020018	Washer GB/T97.1 8	1
13	WE03090020018	Needle Bearing	1	44	WE03010010077	Bolt M5x55	2
14	WE02020120023	Crankshaft	1	45	WE02070010019	Side Gasket	1
15	WE03090010028	Bearing GB/T276 6001/P5	2	46	WE70030020016	Insulator	1
16	WE03100010009	Seal 12x22x7	2	47	WE03020020012	Bolt GB/T9074.4 M5*20	6
17	WE03060010002	Pin	4	48	WE02070010071	Carburettor Gasket	1
18	WE70070050038	Rear Crankcase	1	49	WE02050020101	Carburettor	1
19	WE02050100015	Starter Pawl	1	50	WE70080120007	Air Filter Housing with Choke	1
20	WE02050070090	Recoil Assembly	1	51	WE03020020044	Bolt GB/T9074.4 M5*55	2
21	WE03020020029	Screw GB/T9074.4 M4*16	5	52	WE02090010011	Air Filter	1
22	WE03070010001	Woodruff Key 3x3.7x12	1	53	WE70030040225	Air Filter Cover	1
23	WE02070010119	Crankcase Gasket	1	54	WE02110030079	Air Filter Screw	1
24	WE70070050039	Front Crankcase	1	55	WE02110020026	Fuel Tank Cap Assembly	1
25	WE03010010058	Bolt M5x25	4	56	WE61330010017	Fuel Inlet Pipe	1
26	WE02050030020	Flywheel	1	57	WE61330010018	Fuel Outlet Pipe	1
27	WE03030020003	Nut M8	1	58	WE02050120002	Fuel Filter	1
28	WE03040050052	Washer φ6*15*1.2	2	59	WE03020020027	Screw GB/T9074.4 M5*16	3
29	WE02050160002	Clutch Assembly	1	60	WE03040050022	Washer φ5*15*1	3
30	WE03040050042	Washer	2	61	WE70050030170	Fuel Tank	1
31	WE02020130001	Clutch Bolt	2				



PARTS DIAGRAM - WEMC26 Shaft & Sundries

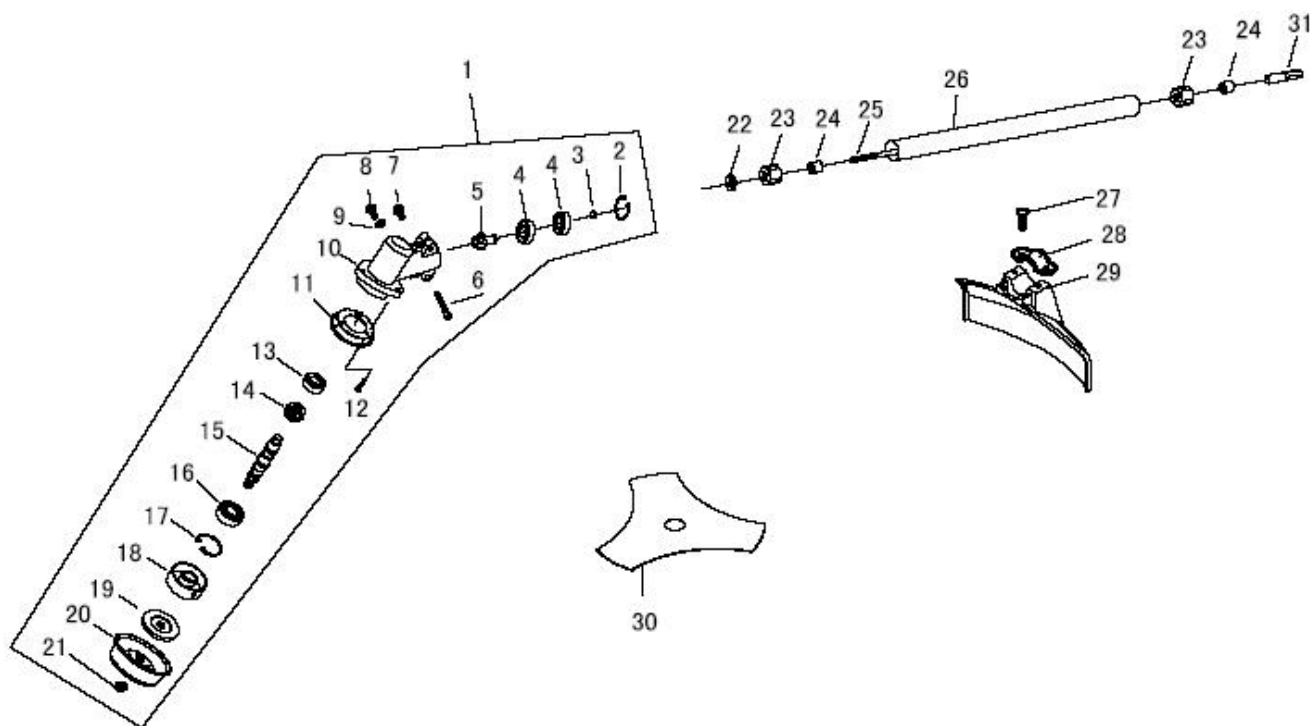


PARTS LIST - WEMC26 Shaft & Sundries

Item	Part No	Webb Description	Qty	Item	Part No	Webb Description	Qty
1	WE02010010019	Shaft 24x1.5x750	1	21	WE70030160031	Handle Clamp	1
2	WE02020150010	Washer	1	22	WE61270040018	Trigger Assembly	1
3	WE02040010005	Oil Bearing	3	23	WE03010010029	Screw M5x14	1
4	WE02080020082	Rubber Cover	3	24	WE02020160213	Clamp	1
5	WE02020060020	Drive Shaft (785mm)	1	25	WE03030060008	Nut M5	3
6	WE70030180133	Harness Clamp	1	26	WE70030070164	Trigger Housing - Right	1
7	WE70030160007	Clamp	1	27	WE02080020054	Rubber Cover	1
8	WE03040030002	Washer 5	1	28	WE70030180090	Clamp	1
9	WE03010060053	Screw M5x20	1	29	WE03010010022	Screw M5x20	2
10	WE70030180089	Handle Wheel	1	30	WE02050050078	Stop Switch	1
11	WE70070090011	pipe jion	1	31	WE70030070047	Tine	1
12	WE03020030017	Screw(M5x12)	1	32	WE02020110039	Spring	1
13	WE03040020015	Washer 6	1	33	WE02020110041	Spring	1
14	WE03050010012	Washer 6	1	34	WE70030070172	Safety Lever	1
15	WE03010010024	Bolt M6x35	1	35	WE02020110041	Spring	1
16	WE03060030005	Pin	1	36	WE70030070074	Throttle Lever	1
17	WE02050060016	Harness	1	37	WE02050040045	Electrical Cable	1
18	WE61270090004	Handle Assembly	1	38	WE03010010046	Screw M5x30	1
19	WE03010010049	Screw M5x35	4	39	WE70030070216	Trigger Housing - Left	1
20	WE70030160079	Handle	1	40	WE03030010002	Nut M6	2
				41	WE01040030002	Tube	1



PARTS DIAGRAM - WEMC26 Brushcutter

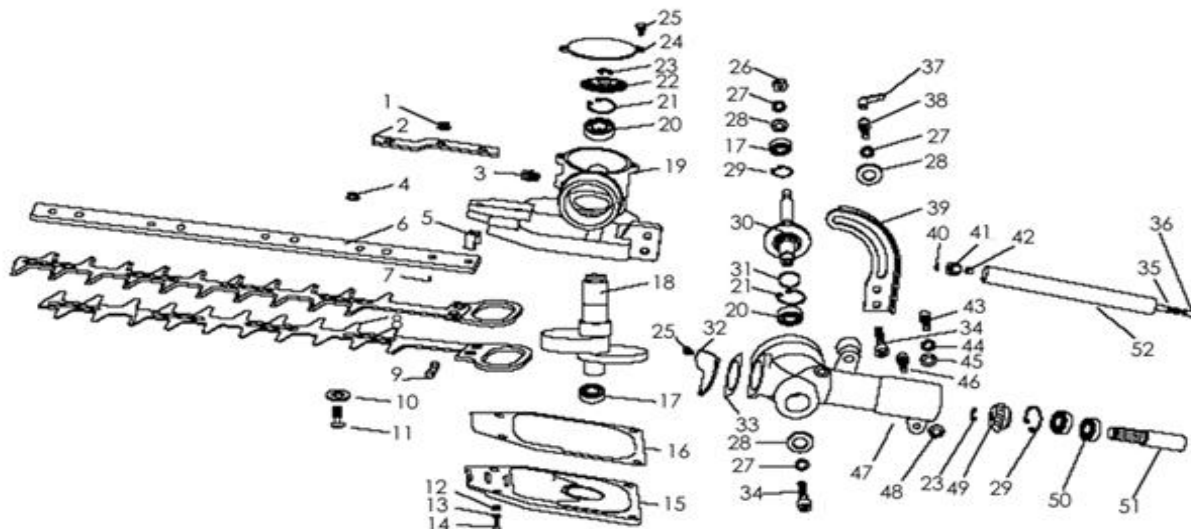


PARTS LIST - WEMC26 Brushcutter

Item No	Webb Part No	Webb Description	Qty	Item No	Webb Part No	Webb Description	Qty
1	WE61270030106	Gearhead Assembly	1	1-16	WE03090010019	Bearing 6201-2RS	1
1-2	WE03120020006	Retaining Ring 24	1	1-17	WE03120020001	Retaining Ring 32	1
1-3	WE03120010008	Retaining Ring 9	1	1-18	WE02020100024	Holder A	1
1-4	WE02060040143	Bearing 609-2Z/P5	2	1-19	WE02020100013	Holder B	1
1-5	WE02020090066	Gear	1	1-20	WE02020160305	Nut Cover	1
1-6	WE03020030022	Screw M6x25	1	1-21	WE03030070024	Nut M10*1.25	1
1-7	WE03020030017	Screw M5x12	1	22	WE02020150010	Locked Washer	1
1-8	WE03010030009	Bolt M6X10	1	23	WE02080020082	Rubber	3
1-9	WE03040050033	Washer	1	24	WE02040010005	Oil Bearing	3
1-10	WE70070010018	Gear Case	1	25	WE02020060021	Driveshaft	1
1-11	WE02020160234	Cover	1	26	WE02010010114	Shaft	1
1-12	WE03010060058	Screw M4x8	3	27	WE03020030024	Screw M6x20	2
1-13	WE03090010015	Bearing 6000-2RS	1	28	WE02020160202	Bracket	1
1-14	WE02020090015	Gear	1	29	WE70030030341	Safety Guard	1
1-15	WE02020090003	Gear Shaft	1	30	WE02020070002	Blade 1.4x230	1
				31	WE02020160294	Joint B	1



PARTS DIAGRAM - WEMC26 Hedgecutter

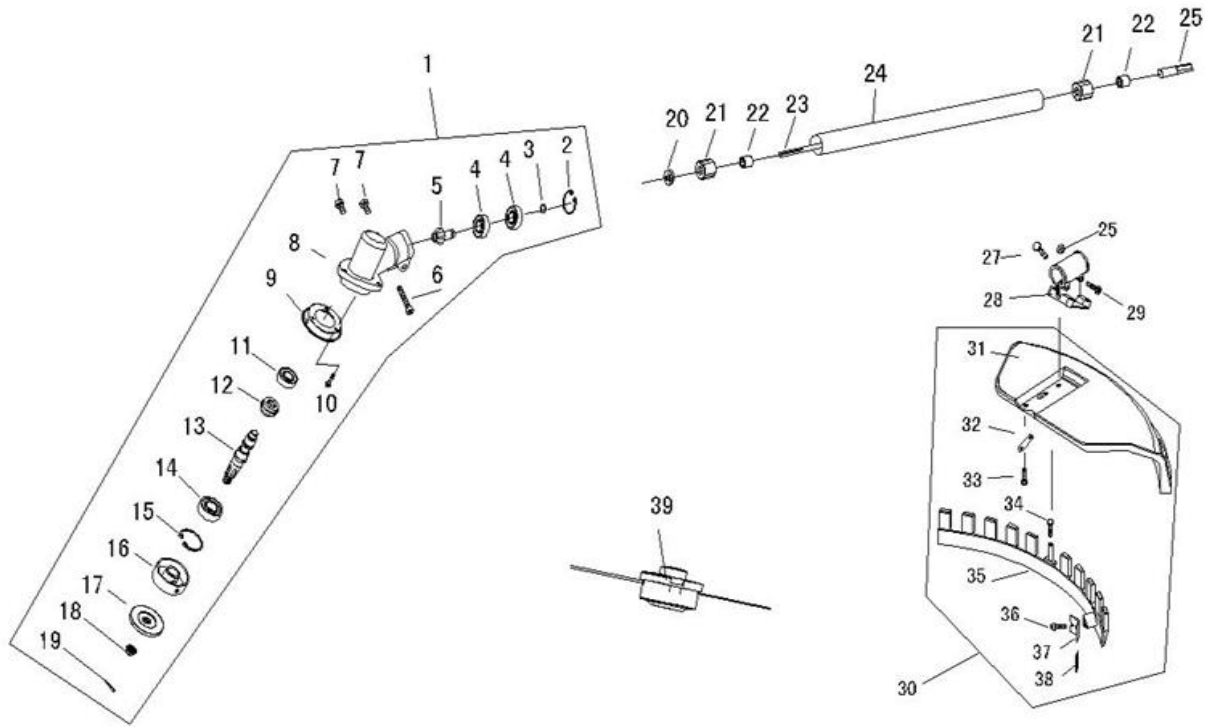


PARTS LIST - WEMC26 Hedgecutter

Item No	Webb Part No	Webb Description	Qty	Item No	Webb Part No	Webb Description	Qty
1	WE03030060007	Nut M5	2	27	WE03050010012	Washer 6	3
2	WE02020160100	Frame	1	28	WE03040050050	Washer 6	3
3	WE03010110043	Grease Nipple	3	29	WE03120020007	Retaining Ring 22	2
4	WE03030060010	Nut M6	4	30	WE02020090014	Gear Shaft Assembly	1
5	WE02020160099	Clip	1	31	WE03110020004	Sealing Washer 41x3.5	1
6	WE02020070039	Blade Brace	1	32	WE02020160047	Gear Case Cover	1
7	WE03010110089	Screw M5x18	2	33	WE02070010103	Washer	1
8	WE02020070038	Blade Assembly	1	34	WE03010010037	Screw M6*14	3
9	WE02090030002	Felt	1	35	WE02020060021	Driveshaft	1
10	WE03040050055	Washer 6	4	36	WE02020160294	Joint B	1
11	WE03010110009	Bolt	4	37	WE70010050021	Angle Adjuster	1
12	WE03040020011	Washer 4	4	38	WE02020160304	Adjuster Screw	1
13	WE03050010016	Washer 4	4	39	WE02020070040	Angle Bracket	1
14	WE03010010026	Screw M4x12	4	40	WE02020150010	Washer	1
15	WE70070080058	Gear Case Cover	1	41	WE02080020082	Rubber Pipe	3
16	WE02070010054	Gear Case Gasket	1	42	WE02040010005	Oil Bearing	3
17	WE03090010005	Bearing 608-2RS	2	43	WE03010010010	Screw M5x25	1
18	WE02020090042	Blade Driver	1	44	WE03050010014	Washer 5	1
19	WE70070010013	Gear Case	1	45	WE03040020019	Washer 5	1
20	WE03090010015	Bearing 6000-2RS	2	46	WE03010010008	Sscrew M5x10	1
21	WE03120020002	Retaining Ring 26	2	47	WE70070010012	Gear Case	1
22	WE02020090016	Gear	1	48	WE03040050061	Washer 5	1
23	WE03120030005	Retaining Ring 6	2	49	WE02020090067	Gear	1
24	WE02110020009	Round Cover	1	50	WE03090010010	Bearing 6900-2Z/P5	2
25	WE03020010002	Screw M4x10	4	51	WE2020090138	Small Shaft	1
26	WE03030010003	Nut M6	1	52	WE02010010110	Shaft	1



PARTS DIAGRAM - WEMC26 Line Trimmer

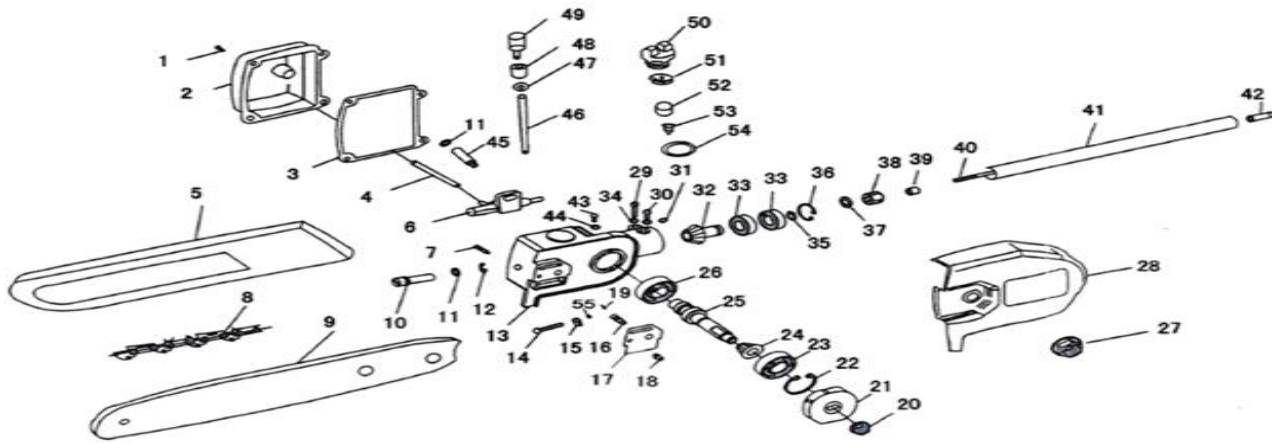


PARTS LIST - WEMC26 Line Trimmer

Item No	Webb Part No	Webb Description	Qty	Item No	Webb Part No	Webb Description	Qty
1	WE61270030043	Gearhead Assembly	1	20	WE02020150010	Locked Washer	1
1-2	WE03120020002	Retaining Ring 26	1	21	WE02080020006	Rubber	3
1-3	WE03120010001	Retaining Ring 10	1	22	WE02040010004	Oil-Bearing	3
1-4	WE03090010015	Bearing 609-2Z/P5	2	23	WE02020060112	Driveshaft	1
1-5	WE02020090098	Gear	1	24	WE02010010177	Shaft	1
1-6	WE03020030013	Screw M5x25	1	25	WE02020160731	Joint B	1
1-7	WE03020030017	Screw M6x12	2	26	WE03030010012	Nut M5	2
1-8	WE70070010031	Gear Case	1	27	WE03010010055	Screw M5x14	1
1-9	WE02020160080	Cover	1	28	WE70030030539	Bracket	1
1-10	WE03020020025	Screw M5x12	3	29	WE03010010061	Screw M5x20	2
1-11	WE03090010013	Bearing 6000-2RS	1	30	WE61270070058	Safety Guard Assembly	1
1-12	WE02020090012	Gear	1	30-31	WE70030030634	Safety Guard	1
1-13	WE02020090029	Gear Shaft	1	30-32	WE02010030001	Clamp	2
1-14	WE03090010013	Bearing 6201-2RS	1	30-33	WE03010110125	Screw M5x20	4
1-15	WE03120020001	Retaining Ring 32	1	30-34	WE03010040074	Screw	1
1-16	WE02020100020	Holder A	1	30-35	WE70030030469	Guard Shield	1
1-17	WE02020100012	Holder B	1	30-36	WE03010040024	Screw	2
1-18	WE03030010008	Nut M10x1.25	1	30-37	WE02020070102	Knife	1
1-19	WE03060020004	Pin 2x16	1	30-38	WE02080020110	Knife Cover	1
				39	WE02050220026	Nylon Cutter Head	1



PARTS DIAGRAM - WEMC26 Pruner



PARTS LIST - WEMC26 Pruner

Item No	Handy Part No.	Webb Description	Qty	Item No	Handy Part No.	Webb Description	Qty
1	WE03020020032	Screw M4X12	4	28	WE70030030334	Gear Case cover	1
2	WE70030060064	Case Cover	1	29	WE03010010010	Screw M5X25	1
3	WE02070010130	Gasket	1	30	WE03010010008	Screw M5X10	1
4		Pipe 1	1	31	WE03040050060	Washer	1
5	WE70030030338	Chain/Bar Cover	1	32	WE02020090074	Gear	1
6	WE02050130001	Oil Pump	1	33	WE03090010011	Bearing 609z	2
7	WE02030010007	Pipe	1	34	WE03050010014	Washer $\phi 5$	2
8	WE02050110001	Chain	1	35	WE03120010008	Retaining Ring $\phi 9$	1
9	WE02050110003	Chain Bar	1	36	WE03120020006	Retaining Ring $\phi 26$	1
10	WE03010110030	Chain Adjustment Bolt	1	37	WE02020150010	Washer	1
11	WE03110020027	O-ring	2	38	WE02080020082	Rubber Cover	3
12	WE03120030005	E-Ring $\phi 6$	1	39	WE02040010005	Oil-Bearing	3
13	WE70070010016	Gear Case($\phi 24$)	1	40	WE02020060021	Driveshaft	1
14	WE03020020037	Screw M5X40	1	41	WE02010010115	Shaft	1
15	WE03030070040	Nut M5	1	42	WE02020160294	Joint B	1
16	WE03010050009	Bolt	1	43	WE03010060048	Screw M6 \times 10	1
17	WE02050110002	Washer	1	44	WE03040020015	Washer $\phi 6$	1
18	WE03010110107	Screw M6X8	1	45	WE03010110029	Bolt	1
19	WE03060020010	Pin	1	46		Pipe 2	1
20	WE03030060002	Nut M6	1	47	WE03040010009	Washer 5	1
21	WE02050110010	Sprocket	1	48	WE02050120014	Sieve	1
22	WE03120020003	Retaining Ring $\phi 28$	1	49	WE02050120013	Oil Filter	1
23	WE02060040144	Bearing	1	50	WE70030060050	Oil Filler Cap A	1
24	WE02020090023	Gear	1	51	WE70030060051	Oil Filler Cap B	1
25	WE02020090049	Shaft	1	52	WE02090010033	Sleve	1
26	WE03090010039	Bearing	1	53	WE02080040001	Valve	1
27	WE03030050009	Nut M8	1	54	WE03110010001	O-ring	1
				55	WE03040020019	Washer	1





EC DECLARATION OF CONFORMITY

We Handy Distribution Ltd - SN3 5HY (Importer) declare that the product:

Designation: Petrol Multicutter (incl. Pruner, Hedgecutter, Line Trimmer, Brushcutter Attachments)

Model(s): WEMC26

Type/Serial No. As per rating label on machine

Complies with the following directives:

Machinery Directive as last amended by EC Directive 2006/42/EC Annex -VII

Electromagnetic Directive as last amended by EC Directive 2014/30/EU

The conformity assessment procedure followed was in accordance with

EN ISO 14982:2009

EN ISO 11806-1:2011

EN ISO 10517/A1:2013

Measured Sound Pressure Level: $L_{PA} = 97\text{dB(A)}$

Measured Sound Power Level: $L_{WA} = 117\text{dB(A)}$

Notified Body:

TÜV SÜD Product Service GmbH

Addresses:

- 88 Heng Tong Road, Shanghai 200070, (P.R China)
- Zertifizierselle, Ridlerstraße 65, 80339 München, Germany

Authorised signatory and technical file holder

Date: 17/11/2015

Signature:

Name: Mr Simon Belcher

Position: Managing Director

Company: Handy Distribution Ltd

Address: Murdock Rd, Swindon, Wiltshire, SN3 5HY.





INSTRUCTION MANUAL

This Service Book is provided with your Webb, to help you look after your purchase to our recommendations and enable you to take advantage of the 2 year conditional manufacturer domestic warranty*.

* Commercial/Professional & Hire users receive a 90 day warranty

Present this service book to your authorised Webb repair dealer, whenever a service or a warranty appraisal is required.

The booklet is applicable to the following products, in the UK only:

Ride On Lawn Tractors
Cylinder Lawnmowers
Petrol Rotary Lawnmowers
Petrol Hand Held Range

Please register your machine using the following pages or at www.webblawnmowers.co.uk. By registering your machine, you agree to maintain the machine in accordance with the service schedules specified in this manual and services duly recorded. You may be asked to produce this booklet as proof of servicing in the event of a claim. Proof of purchase should also be kept as a reference.

Ensure you have the following information available from your machine product label. The two examples below can be found on your machine:



1. Model Number

2. Serial & Product Number

Please complete using BLOCK CAPITALS.
Sections marked* must be completed to validate Warranty.



1. Users Statement of Warranty

Each new machine is warranted against defective material or assembly of material under normal usage. The warranty applies to the original purchaser, is not transferable and covers faulty parts and the labour involved in replacing and repairing those parts, which are of original manufacture.

2. Period of Warranty

2 year conditional warranty from the original date of sale to the first domestic user.

90 days from the original date of sale to the professional/commercial or for hire user.

Engine warranty as per the engine manufacturer's warranty, which will be supplied with the machine.

90 days from the original date of sale for Replacement Spare Parts

All machines' must be serviced within the first 14 months from the original date of purchase, to qualify for a second year parts & labour warranty, details of the service must be recorded in the service record within this manual.

A reduced warranty period of 90 days applies to those items which are subject to normal wear and tear and in normal use, will need replacement or adjustment.

These items are chargeable after 90 days of ownership.

Filters
Tyres / Wheels
Drive chains and belts
Brake & clutch friction components
Control cable & starter cords
Fluids & lubricants
Spark plugs
Blades (Lawnmowers & Brushcutters)
Cutter bars (Hedgecutters)
Drive & clutch cable surfaces
Nylon Lines (Line Trimmers)
Carburettor cleaning
Bearings
Bushes
Electric cable
Grass collectors

3. Not covered by this warranty

(a) The warranty policy does not cover any depreciation or damages caused by ordinary wear, rusting or corrosion, lack of correct maintenance or operation, misuse, abuse, lack of transportation or accident.

(b) The warranty policy does not cover any costs necessary for the standard periodic maintenance services instructed by the operators manual, or service parts replacement which would include oil, filters, tyres, belts, brake linings, fuses, blades, seals and other service parts unless it can be proven that the item has evidence of faulty manufacture.

(c) The warranty policy will not cover failure or damage caused as a result of parts or accessories being modified without the written approval of GJ Handy & Co Ltd.

(d) The warranty policy will not cover the unit if non-genuine parts have been fitted and as a result damage has occurred to the unit.

(e) The warranty policy is non-transferable and is only applicable to the original purchaser.

4. Disclaimer

(a) This warranty is only a remedy for defect of products. GJ Handy & Co Ltd will never warranty in terms of the merchantability or the fitness for a particular purpose.

(b) No person is authorised to make any warranties, representations or promises, expressed or implied, on behalf of GJ Handy & Co Ltd, or to modify the terms conditions or limitation of this warranty policy in any way.

(c) Neither GJ Handy & Co Ltd nor any company affiliated with GJ Handy & Co Ltd shall be liable in any event or manner whatsoever for incidental or consequential damages or injuries, including, but not limited to, loss of crops, loss of profit, out of pocket expenses or profits, rental of substitute equipment or other commercial losses.





INSTRUCTION MANUAL

Warranty

5. General

- (a) Most warrantable failures show up within the first few weeks of use. These failures are usually straightforward and warranty assessment is relatively easy.
- (b) Failures relating to cutter decks and belts need careful investigation, as the cause may not always be straightforward. Look for damage to blades and pulleys especially when the cutter belt or blade boss have snapped or cracked as this could be due to impact damage.
- (c) Customers should always refer to the operator/instruction manual when any disputed problem arises, you will find most areas covered within the manual.

Protecting your machine

Maintenance

Regular maintenance of your Webb machine is essential to ensure it operates, safely, efficiently and therefore reducing the environmental impact.

It is the owner's responsibility to ensure that their Webb machine is maintained at specific intervals. Any approved Webb service dealer can undertake a service, which are specialised in our products and will be aware of your particular machine and any technical updates which will save valuable time & money.

If you are using your machine in dry, dusty or high temperatures, you will need to service the machine more regularly.

Fuel

Due to ongoing efforts by fuel companies to reduce emissions, unleaded petrol will oxidize & deteriorate in storage overtime, leaving residue from detergent components.

Fuel deterioration problems may occur when petrol is stored for over 30 days. If you are planning to store fuel for over 30 days, we recommend you add Handy Parts Sure-Start fuel stabilizer to fresh fuel after purchasing. Sure-Start cannot reconstitute stale fuel.

Storage

When storing your machine for an extended period, we do recommend that you follow the instructions of engine instruction manual.

Always store the fuel in a clean, approved and sealed container. If the container is steel, ensure it is not corroded.

If the container is not filled to its recommended capacity, air can accelerate fuel deterioration.

Always store fuel away from direct sunlight, in a dark, cool environment.



Your servicing Webb approved dealer will stamp & date the below relevant sections, when the correct service actions have been completed.

PLEASE ENSURE THE SERVICE BOOK IS AVAILABLE FOR THE DEALER, DURING SERVICE WORK.

1st Service

This must be stamped by an approved service dealer to qualify for a free second year warranty.

12 Months

Date

24 Months

Date

36 Months

Date





INSTRUCTION MANUAL

Service Record

48 Months

Date

60 Months

Date

72 Months

Date

84 Months

Date

96 Months

Date

108 Months

Date

120 Months

Date

132 Months

Date





Webb Lawnmowers
Murdock Road
Dorcan
Swindon
Wiltshire
SN3 5HY

