



Adjustable Hedgecutter  
Attachment  
**WEPHCATT**  
1938131001

## Operator's Manual & Parts List

Please read & understand this manual, paying particular attention to the safety instructions, before use.  
The manufacturer reserves the right to change the product specification and livery according to continued product improvements.



# **CONTENTS**

**SAFETY INSTRUCTIONS**

**SPECIFICATIONS**

**COMPONENTS**

**ASSEMBLY**

**OPERATION**

**MAINTENANCE, CLEANING & STORAGE**

**TROUBLE SHOOTING**

**PARTS DIAGRAM & LIST**

**WARRANTY**

**DECLARATION OF CONFORMITY**



# INSTRUCTION MANUAL

## SAFETY INSTRUCTIONS

Read and understand the owner's manual and labels affixed to the machine. Learn its application and limitations as well as the specific potential hazards. Retain these instructions for future reference. The operator is responsible for following the warnings & instructions in this manual and on the product.

	Read & understand operator's manual before using the machine. Failure to follow instructions could result in death or serious injury.		This graphic and when accompanied by <b>WARNING</b> or <b>DANGER</b> , calls attention to actions which could lead to <b>SERIOUS INJURY</b>
	Always wear eye and ear protection		Always <b>TURN OFF THE ENGINE</b> , ensuring the cutting tool has stopped, before cleaning, removing or adjusting the blade.
	Always wear gloves to protect your hands. <b>SHARP ROTATING BLADES</b>		Wear foot protection or sensible shoes when using the machine
	<b>WARNING</b> Do not operate near electrical hazards <b>SERIOUS OR FATAL PERSONAL INJURY</b>		Keep all bystanders & animals at least 15 metres away from the machine during operation. If approached, stop the machine immediately.
	No smoking		Risk of Carbon Monoxide Poisoning. Ensure working area is correctly ventilated.
	Do not use near a flame, or sparks		Fire Risk Fire and its vapors are extremely flammable & explosive. Fire or explosion can cause severe burns or death.
	Moving Parts Rotating parts can contact or entangle hands, feet, hair, clothing or accessories. Traumatic amputation or severe laceration can result		Hot Surface. Running engines produce heat. Engine parts, especially the exhaust, become extremely hot. Severe thermal burns can occur on contact



Safety alert symbol. Used to alert you to potential personal injury hazards. Obey all safety messages that follow this symbol to avoid possible injury.



### DANGER

Indicates an imminently hazardous situation which, if not avoided, will result in serious injury.



### WARNING

Indicates a potentially hazardous situation which, if not avoided, could result in serious injury



### CAUTION

Indicates a potentially hazardous situation which, if not avoided, may result in minor or moderate injury.

### CAUTION

Used without the safety alert symbol indicates a potentially hazardous situation which, if not avoided, may result in property damage.

### **STAY ALERT**

Do not operate the machine while under the influence of drugs, alcohol, or any medication that could affect your ability to use it properly. Do not use this machine when you are tired or distracted from the job at hand. Be aware of what you are doing at all times. Use common sense.

### **AVOID DANGEROUS CONDITIONS**

Make sure there is adequate surrounding workspace. Cluttered areas invite injuries.

Keep your work area clean with sufficient light. Keep area around the machine clear of obstructions, stones, sticks, wires and other debris or foreign bodies which could cause damage to the machine.

DO NOT SMOKE, whilst using the machine.

### **INSPECT YOUR MACHINE**

Check all bolts, nuts, and screws for tightness before each use, especially those securing guards and drive mechanisms. Vibration during use may cause these to loosen.

Replace damaged, missing or failed parts before using.

Warning labels carry important information.

Replace any missing or damaged warning labels.

### **DRESS PROPERLY**

Do not wear loose clothing, gloves, scarfs, neckties or jewelry (rings, wrist watches), which can be caught in moving parts.

ALWAYS wear protective eye and ear wear. Appropriate gloves are also recommended.

Wear protective hair covering to contain long hair, preventing it from getting caught in machinery.

DO NOT use whilst barefoot or wearing open toed footwear.

### **KEEP BYSTANDERS AND CHILDREN AWAY**

Keep unauthorised persons or animals a minimum distance of 15 metres away from the mower. Do not allow children to handle, use, or climb on the lawnmower.

### **DO NOT OVERREACH**

Keep proper footing and balance at all times, particularly if using on slopes. The machine should not be used on steep slopes and always be sure of footing.

### **AVOID INJURY FROM UNEXPECTED ACCIDENT**

Keep hands out of the way of moving parts, particularly the engine and rotating cutting tool.

### **DO NOT FORCE TOOL**

Always work within the rated capacity. Do not use the machine for a purpose for which it was not intended.

Always use the correct handles and shoulder straps provided with the machine.

### **MAINTAIN YOUR MACHINE WITH CARE**

Clean the machine immediately after use. Keep the machine clean to ensure it operates to its full and safest performance. When maintaining this machine, only the manufacturer's original replacement parts should be used. The use of non-original manufacturer parts may invalidate your warranty.

### **STORE IDLE EQUIPMENT**

When not in use, the machine should be stored in a dry location. Keep the machine away from children and others not qualified to use it. DO NOT STORE FUEL IN THE MACHINE, fuel over 30 days old can become stale and if used, damage the carburetor, which is not covered by the manufacturer's warranty.



## INSTRUCTION MANUAL

### SPECIFICATIONS

Model	WEPKLRT
Product No.	1938131001
Cutting width (mm)	520
Weights (kgs)	N.W 2.7 – G.W 3.0

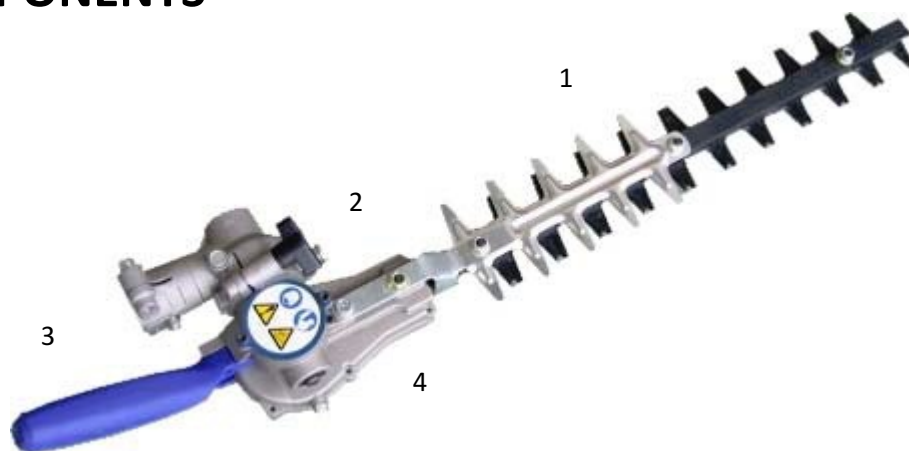
The manufacturer reserves the right to change the product specification and livery according to continued product improvements.



This symbol on the product or on its packaging indicates that this product may not be treated as household waste. Instead it shall be handed over to the applicable collection point for the recycling of electrical and electronic equipment.

For more detailed information about recycling of this product, please contact your local council office, your household waste disposal service or shop where you purchased the product.

### COMPONENTS



**1** Blades      **2** Adjusting Screw      **3** Adjusting Handle      **4** Gear Head

**Carefully remove the machine from its packaging and check that you have all the components.**

**If parts are missing or damaged, please contact us:**

**Telephone: 01793 333212**  
**(Mon to Fri 8.00am to 5.30pm excl. Bank Holidays)**

**Email: [customerservice@webbgardenpower.co.uk](mailto:customerservice@webbgardenpower.co.uk)**

## ASSEMBLY

**PLEASE NOTE, THESE INSTRUCTIONS ARE SUPPLIED TO ASSIST YOU IN THE ASSEMBLY OF YOUR PRODUCT, SOME STEPS MAY NOT BE NECESSARY.**

Remove the machine and contents from the carton. Be sure the carton is empty before discarding.

If you require any assistance with regards to the contents of the machine package, contact us:

**Tel: 01793 333212 - Mon – Fri 8.00am – 5.30pm (excl. Bank Holidays)**

**Email: [customerservice@webbgardenpower.co.uk](mailto:customerservice@webbgardenpower.co.uk)**

### STEP 1 - MOUNTING CUTTING HEAD

#### **IMPORTANT:**

**Make sure that the engine is turned off and remove the spark plug cap before assembling the hedge trimmer.**

**Wear protective gloves.**

**Secure blades with the blade cover provided when connecting the hedge trimmer attachment into the shaft tube.**

Loosen the tube locking screw.

Insert the drive shaft into the gear case of the attachment.

**NOTE: When having difficulty inserting the drive shaft into the gear case, turn the attachment clockwise or anti-clockwise.**

Tighten the tube locking screw in gear case.

Tighten 2pcs of clamp bolts securely.



#### **WARNING**

**EXCESSIVE VIBRATION OF THE METAL BLADE INDICATES IT HAS NOT BEEN INSTALLED CORRECTLY. STOP THE ENGINE IMMEDIATELY, CHECK THE BLADE INSTALLATION AND RE-INSTALL CORRECTLY. AN INCORRECTLY INSTALLED BLADE CAN CAUSE INJURY.**

## OPERATION



#### **DANGER**

**All model hedgecutters can throw small objects as well as material being cut. Do not allow anyone to enter the operating DANGER ZONE with you. The danger zone is an area 15 metres in radius**

**Insist that persons in the RISK ZONE beyond the danger zone wear eye protection from thrown objects. If the unit must be used where there are unprotected people, operate at a low throttle speed to reduce the risk of thrown objects.**



**DANGER ZONE WITHIN 15 METRES - RISK ZONE GREATER THAN 15 METRES**



# INSTRUCTION MANUAL

## GENERAL USE



### WARNING

**Prior to using the machine, ensure all hardware (bolts, screws & nuts) are securely tightened.**

- Operate the trigger with your right hand & hold the D-Handle with your left hand.
- The trigger increases and decreases the power of the engine to the attachment, increasing the revolution/reciprocation of the attachment.

## WORKING PLAN

- Limit the amount of time the product is used continuously to a maximum of 40 minutes per session.
- Leave the machine to rest between sessions for between 10-20 minutes.
- Total amount of work performed per day with the machine, should be limited to 120 minutes' maximum.
- Continuous use of the machine can cause "Repetitive Stress Injury (RSI)". If you feel discomfort, redness or swelling of your hands and fingers or any other body part, consult your doctor.
- Check local regulations for sound level and hours of operation constraints.
- Never transport the machine, whilst the engine is running.

## ADJUSTING THE CUTTING HEAD



### WARNING

**Always stop the engine before making adjustments.**

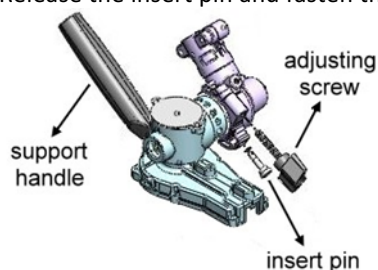
**Never touch the blade when adjusting the blade angle & hold the support instead.**

Stop the engine.

Loosen the adjusting screw to adjust the angle.

Pull the insert pin and adjust the blade angle to the desired position by holding the support handle.

Release the insert pin and fasten the adjusting screw firmly.



## TRIMMING

When working with the hedge trimmer, firmly grasp the handles with both hands.

Do not touch the cutter blade of the hedge trimmer during operation or when the engine is running.

Take extra care not to inhale exhaust gases when working with the hedge trimmer. Never operate the hedge trimmer in an enclosed room or an area with insufficient ventilation.

Always wear adequate protective wear before starting to work with the hedge trimmer.

Stop the engine immediately if the muffler is not functioning properly.

Only use the hedge trimmer in good light and visibility conditions.

Do not operate the hedge trimmer in darkness or fog. Beware of slippery and wet areas and always ensure secure footing.

Never use the hedge trimmer while standing on an unstable surface or a steep slope.

Never use the hedge trimmer while standing on a ladder.

Never use the hedge trimmer while in a tree.

Check the working area before and during operation for wires, cord, glass or other foreign objects that could get caught in the cutter blades.

Confirm that the cutter blades are at a high speed before starting to cut.

Always grip the hedge trimmer with both hands and maintain a firm grip when working with the machine.

Note that the cutter blades will remain in motion for up to two seconds after the throttle lever has been released.



Do not cut with the hedge trimmer at low engine speeds.

The speed of the cutter blades cannot be adjusted properly with the throttle lever when the engine is running at low speeds.

To trim the top surface of a hedge, first align the cutting tool at an angle of 15-30 degrees in the cutting direction and keep the hedge trimmer in a horizontal position. Then start trimming the hedge using a sweeping movement, as if you were drawing half circles with the hedge trimmer shaft.

To trim the sides of a hedge, align the blades parallel to the surface to be cut and start trimming with semi-circular upward movements.

Pay attention when trimming a hedge that has grown along a fence. Be especially careful not to allow the cutter blades to come into contact with obstacles such as fences. Cutting into metal, stone, concrete or thick wood may damage the blades and the machine itself.

Do not use the hedge trimmer over an extended period of time. As a general rule, for every 50 minutes of operation, take a 10-20-minute rest.

If the cutter blades come into contact with stones or other solid objects, stop the engine immediately and check the blades for damage. Replace damaged blades.

If the hedge trimmer develops a problem during operation, immediately stop the engine. Do not use the machine again until the problem has been recognized and solved.

Always do your utmost to keep pollution and noise emissions as low as possible when operation the pole hedge trimmer. Pay special attention to correct carburetor adjustment and accurate petrol/oil mixture.

If thick branches get jammed in the cutter blades, immediately stop the engine, lay the equipment on the ground and remove the obstruction. Check the blades for damage before using the machine again.



#### **WARNING**

**DO NOT trim any area where there maybe strands of fencing wire. Do not cut where you cannot see what the cutting tool is cutting.**

### **CUTTING ADVICE**

- Always keep a firm grip with both hands during operation
- The machine should be held at a comfortable position, with the trigger handle at hip height. Adjust the harness to suit.
- Maintain a firm footing in case the machine hits a solid object & kicks back.
- Do not use the metal blade near fencing, posts, buildings or other immoveable objects.
- Best results are obtained if you cut from right to left, in a broad sweeping motion.
- If a hard object is struck, immediately stop the machine and inspect for damage.



#### **WARNING**

**DO NOT use the put the metal blade into contact with Utility Wires, Metal Stakes, Rubber, Masonry, Rocks, Fences, and Trees.**



#### **DANGER**

**DO NOT cut with a dull, cracked or damaged metal blade.**

**Before cutting, inspect for obstructions. If an obstruction cannot be removed, mark its location clearly so you can avoid it during operation.**

**Rocks & metal can dull or damage a blade. Wires can wrap around the blade head or be thrown in the air.**

**NOTE: THE METAL BLADE IS NOT REVERSIBLE. DO NOT SHARPEN THE METAL BLADE, AN UNEVEN BLADE WILL CAUSE EXCESSIVE VIBRATION.**



## INSTRUCTION MANUAL

### MAINTENANCE, CLEANING & STORAGE



#### WARNING

Improper maintenance & storage of the machine may void your warranty.  
Keep the machine clean for better and safer performance.

#### MAINTENANCE

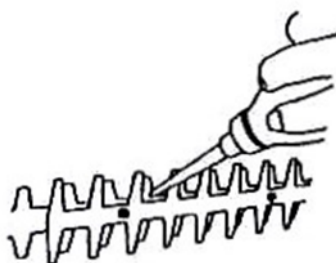
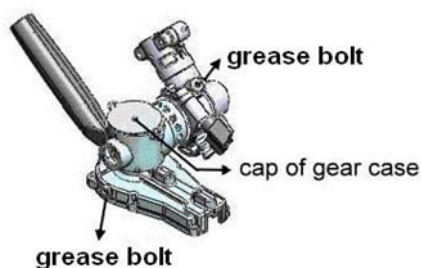
- Before each use, check all nuts & bolts to be sure they are sufficiently tightened.
- We recommend only manufacturer original parts are used when maintaining this machine. Failure to do so could invalidate your manufacturer's warranty.
- The engine must be switched off, with the spark plug cap removed, before the machine is unassembled, cleaned, serviced or maintained.

#### GEAR HOUSING LUBRICATION

The gearbox of the hedge trimmer should be greased every 20 working hours. Add approximately 10cc of lubricant (Shell Alvania No. 3 or equivalent) to the gearbox via the grease nipples and cap of the gear case.

Note:

Observe greasing intervals and the amount of grease to be supplied. Mechanical parts of the hedge trimmer may be damaged if grease is not supplied at the prescribed intervals or if an insufficient amount of grease is added.



#### BLADE ADJUSTMENTS

Extended use of the hedge trimmer will gradually wear down the blade. Readjust the blades if cutting performance deteriorates noticeably.

Release nut 1.

Tighten screw 2 lightly until resistance is felt. Then turn the screw in the opposite direction for a quarter or half turn.

Hold screw 2 in place with a screwdriver and tighten nut 1.

After adjustment lubricate the blades with a thin film of light oil.

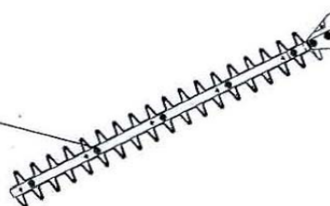
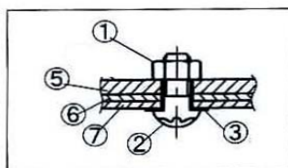
Start the engine and pull the throttle lever several times to set the blades in motion. Continue for approximately one minute.

Stop the engine and wait until the blades come to a standstill. If the blades are running too hot, release screw 2 for another quarter to half a turn and repeat steps 5-6 to confirm proper adjustment.

**NOTE: Always stop the engine and remove the spark plug cap before adjusting the blades!**

The blades have grooves around the truss screws 2. Always keep these grooves clean, so that they can be inspected for possible damage.

- ① Hexagonal U-nut
- ② Truss screw
- ③ Flat washer
- ⑤ Blade guide
- ⑥ Upper blade
- ⑦ Lower blade



### BLADE SHARPENING

The blade must remain balanced; an unbalanced blade will cause excessive vibration through the machine. Blade sharpening should be undertaken by an approved service dealer. Always check for any damage before each use and replace a damaged blade immediately, with an approved replacement part.

### CLEANING

**Keep your machine clean.**

**Thoroughly clean the machine at the end of each use, paying particular attention to cuttings in and around the guard and cutting tool.**

### STORAGE

For years of trouble free service, make sure the machine is clean and dry before storing.

Before storing, clean the machine thoroughly as indicated above.

Store indoors or in a safe, locked protected area during severe weather and winter months.

DO NOT STORE in an enclosed area, where fuel vapors can reach an open hot flame.

DO NOT STORE fuel in the machine. Ensure fuel is removed from the fuel tank and carburetor.

If storing for an extended period, inspect, clean and repair the machine if necessary

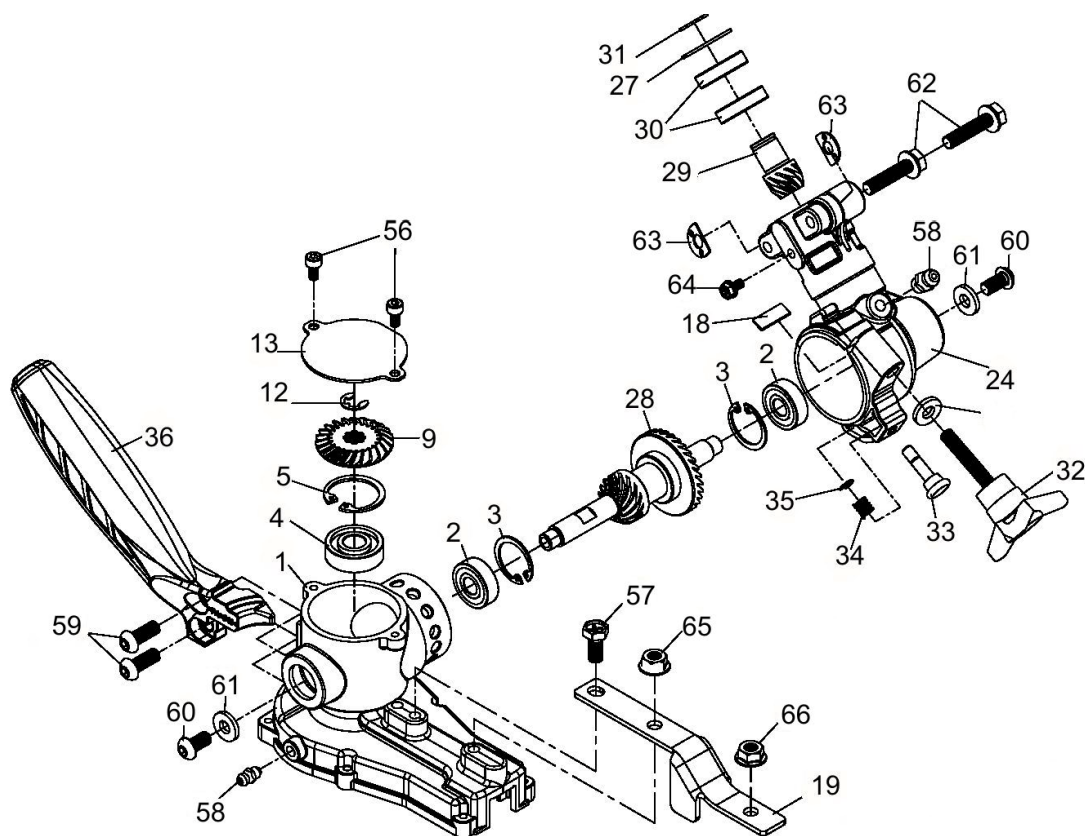
Store in a clean, dry, dust free area.

**DO NOT STORE fuel for longer than 30 days. Fuel can become stale and cause damage to the engine carburetor, which is not covered by the machines manufacturer's warranty.**

## TROUBLE SHOOTING

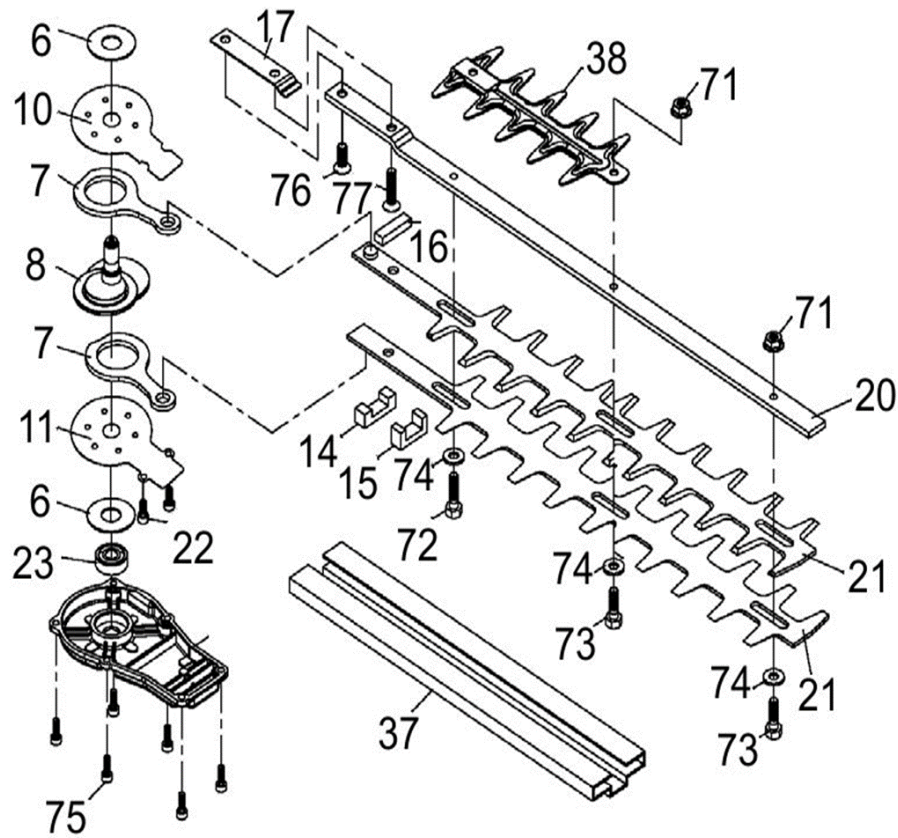
FAULT	PROBABLE CAUSE	SOLUTION
Blades not moving	Blades jammed due to debris.	Stop engine, clear debris.
	Blades bent due to impact damage	Machine to be inspected by approved service dealer, blades to be replaced.
	Head not housed correctly on driveshaft.	Stop engine, remove attachment from driveshaft and re-seat.
Angle of head will not adjust	Adjusting screw or pin not removed sufficiently.	Refer to instructions within this manual.

## PARTS DIAGRAM – WEPHCATT GEAR CASING



Item No.	Part No.	Description	QTY	Item No.	Part No.	Description	QTY
1	TH208-1	Gear Housing	1	32	TH208-32	Adjuster Knob M6x38	1
2	TH208-2	Bearing 608UU	2	33	TH208-33	Adjuster Pin	1
3	TH208-3	Circlip R22	3	34	TH208-34	Spring 0.7mm	1
4	TH208-4	Bearing 6000UU	1	35	TH208-35	Circlip R-E3	1
5	TH208-5	Circlip R26	1	36	TH208-36	Handle	1
9	TH208-9	Gear	1	56	TH208-56	Hex Bolt M4x8	2
12	TH208-12	E-Clip E6	1	57	TH208-57	Hex Bolt M6x15	1
13	TH208-13	Gear Housing	1	58	TH208-58	Grease Nipple M6	2
18	TH208-18	Gasket	1	59	TH208-59	Hex Bolt M6x16	2
19	TH208-19	Support Bracket	1	60	TH208-60	Hex Bolt M6x12	2
24	TH208-24	Gear Case	1	61	TH208-61	Washer	3
27	TH208-27	Circlip R-IR24	1	62	TH208-62	Hex Bolt M6x28	2
28	TH208-28	Gear Shaft	1	63	TH208-63	Safety Washer	2
29	TH208-29	Pinion	1	64	TH208-64	Hex Bolt M5x10	1
30	TH208-30	Bearing Z6901ZZ	2	65	TH208-65	Nut M6	1
31	TH208-31	Circlip R-IS12	1	66	TH208-66	Flange Nut M6	1

## PARTS DIAGRAM – WEPHCATT BLADE ASSEMBLY



Item No	Part No.	Description	Qty	Item No	Part No.	Description	Qty
6	TH208-6	Guide Plate	2	69	TH208-69	Hex Bolt M6x25	1
7	TH208-7	Camrod	2	70	TH208-65	Nut M6	1
8	TH208-8	Camshaft	1	71	TH208-66	Flange Nut M6	3
10	TH208-10	Plate 1	1	72	TH208-72	Bolt M6x22	1
11	TH208-11	Plate 2	1	73	TH208-73	Bolt M6x19	2
67	TH208-67	Hex Bolt M4x12	2	74	TH208-74	Washer	3
14	TH208-14	Grease Seal 1	1	22	TH208-75	Gear Plate	1
15	TH208-15	Grease Seal 2	1	23	TH208-76	Bearing Z608-NTN	1
16	TH208-16	Grease Seal Plate	1	37	TH208-77	Blade Sleeve	1
17	TH208-17	Spacer	1	38	TH208-78	Blade Protector	1
20	TH208-20	Blade Plate	1	75	TH208-79	Hex Bolt M4x12	6
21	TH208-21	Blade	2	76	TH208-80	Hex Bolt M6x16	1
68	TH208-68	Hex Bolt M6x16	1	77	TH208-81	Hex Bolt M6x25	1



## NOTES

[illegible]

## NOTES

[illegible]



## NOTES

[illegible]



## INSTRUCTION MANUAL

This Service Book is provided with your Webb, to help you look after your purchase to our recommendations and enable you to take advantage of the 2 year conditional manufacturer domestic warranty\*.

\* Commercial/Professional & Hire users receive a 90 day warranty

Present this service book to your authorised Webb repair dealer, whenever a service or a warranty appraisal is required.

The booklet is applicable to the following products, in the UK only:

Ride On Lawn Tractors  
Cylinder Lawnmowers  
Petrol Rotary Lawnmowers  
Petrol Hand Held Range

Please register your machine using the following pages or at [www.webblawnmowers.co.uk](http://www.webblawnmowers.co.uk). By registering your machine, you agree to maintain the machine in accordance with the service schedules specified in this manual and services duly recorded. You may be asked to produce this booklet as proof of servicing in the event of a claim. Proof of purchase should also be kept as a reference.

Ensure you have the following information available from your machine product label. The two examples below can be found on your machine:



1. Model Number

2. Serial & Product Number

Please complete using BLOCK CAPITALS.  
Sections marked\* must be completed to validate Warranty.

# SERVICE BOOK

## 1. Users Statement of Warranty

Each new machine is warranted against defective material or assembly of material under normal usage. The warranty applies to the original purchaser, is not transferable and covers faulty parts and the labour involved in replacing and repairing those parts, which are of original manufacture.

## 2. Period of Warranty

2 year conditional warranty from the original date of sale to the first domestic user.

90 days from the original date of sale to the professional/commercial or for hire user.

Engine warranty as per the engine manufacturer's warranty, which will be supplied with the machine.

90 days from the original date of sale for Replacement Spare Parts

All machines' must be serviced within the first 14 months from the original date of purchase, to qualify for a second year parts & labour warranty, details of the service must be recorded in the service record within this manual.

A reduced warranty period of 90 days applies to those items which are subject to normal wear and tear and in normal use, will need replacement or adjustment.

These items are chargeable after 90 days of ownership.

Filters  
Tyres / Wheels  
Drive chains and belts  
Brake & clutch friction components  
Control cable & starter cords  
Fluids & lubricants  
Spark plugs  
Blades (Lawnmowers & Brushcutters)  
Cutter bars (Hedgecutters)  
Drive & clutch cable surfaces  
Nylon Lines (Line Trimmers)  
Carburettor cleaning  
Bearings  
Bushes  
Electric cable  
Grass collectors

## 3. Not covered by this warranty

(a) The warranty policy does not cover any depreciation or damages caused by ordinary wear, rusting or corrosion, lack of correct maintenance or operation, misuse, abuse, lack of transportation or accident.

(b) The warranty policy does not cover any costs necessary for the standard periodic maintenance services instructed by the operators manual, or service parts replacement which would include oil, filters, tyres, belts, brake linings, fuses, blades, seals and other service parts unless it can be proven that the item has evidence of faulty manufacture.

(c) The warranty policy will not cover failure or damage caused as a result of parts or accessories being modified without the written approval of GJ Handy & Co Ltd.

(d) The warranty policy will not cover the unit if non-genuine parts have been fitted and as a result damage has occurred to the unit.

(e) The warranty policy is non-transferable and is only applicable to the original purchaser.

## 4. Disclaimer

(a) This warranty is only a remedy for defect of products. GJ Handy & Co Ltd will never warranty in terms of the merchantability or the fitness for a particular purpose.

(b) No person is authorised to make any warranties, representations or promises, expressed or implied, on behalf of GJ Handy & Co Ltd, or to modify the terms conditions or limitation of this warranty policy in any way.

(c) Neither GJ Handy & Co Ltd nor any company affiliated with GJ Handy & Co Ltd shall be liable in any event or manner whatsoever for incidental or consequential damages or injuries, including, but not limited to, loss of crops, loss of profit, out of pocket expenses or profits, rental of substitute equipment or other commercial losses.



## INSTRUCTION MANUAL

### **5. General**

- (a) Most warrantable failures show up within the first few weeks of use. These failures are usually straightforward and warranty assessment is relatively easy.
- (b) Failures relating to cutter decks and belts need careful investigation, as the cause may not always be straightforward. Look for damage to blades and pulleys especially when the cutter belt or blade boss have snapped or cracked as this could be due to impact damage.
- (c) Customers should always refer to the operator/instruction manual when any disputed problem arises, you will find most areas covered within the manual.

## Protecting your machine

### **Maintenance**

Regular maintenance of your Webb machine is essential to ensure it operates, safely, efficiently and therefore reducing the environmental impact.

It is the owner's responsibility to ensure that their Webb machine is maintained at specific intervals. Any approved Webb service dealer can undertake a service, which are specialised in our products and will be aware of your particular machine and any technical updates which will save valuable time & money.

If you are using your machine in dry, dusty or high temperatures, you will need to service the machine more regularly.

### **Fuel**

Due to ongoing efforts by fuel companies to reduce emissions, unleaded petrol will oxidize & deteriorate in storage overtime, leaving residue from detergent components.

Fuel deterioration problems may occur when petrol is stored for over 30 days. If you are planning to store fuel for over 30 days, we recommend you add Handy Parts Sure-Start fuel stabilizer to fresh fuel after purchasing. Sure-Start cannot reconstitute stale fuel.

### **Storage**

When storing your machine for an extended period, we do recommend that you follow the instructions of engine instruction manual.

Always store the fuel in a clean, approved and sealed container. If the container is steel, ensure it is not corroded.

If the container is not filled to its recommended capacity, air can accelerate fuel deterioration.

Always store fuel away from direct sunlight, in a dark, cool environment.

# SERVICE BOOK

Your servicing Webb approved dealer will stamp & date the below relevant sections, when the correct service actions have been completed.

PLEASE ENSURE THE SERVICE BOOK IS AVAILABLE FOR THE DEALER, DURING SERVICE WORK.

## 1st Service

This must be stamped by an approved service dealer to qualify for a free second year warranty.

12 Months

Date

24 Months

Date

36 Months

Date



# INSTRUCTION MANUAL

48 Months

Date

60 Months

Date

72 Months

Date

84 Months

Date

96 Months

Date

108 Months

Date

120 Months

Date

132 Months

Date

## WARRANTY REGISTRATION

If you have registered online, this form is not necessary.  
PLEASE POST THIS COPY TO THE ADDRESS OVERLEAF

### Product Information (\* Compulsory)

*Model No:	
*Product No:	
*Serial No:	
*Date of Purchase:	

### Personal Information (\* Compulsory)

*Title		*Forename		*Surname	
*House Number		*House Name			
*Address 1					
*Address 2					
*Town					
*County					
*Postcode					
Home Tel				Mobile Tel	
Email					

Age	18 to 25	26 to 35	36 to 45	46 to 60	61 to 80	81 & over
-----	----------	----------	----------	----------	----------	-----------

\*Dealer Stamp (Complete Address)

\*Selling Retailer (If dealer stamp not available)

*Dealer Name	
*Dealer Address	
*Date of Purchase	

*Usage	Domestic Use		Commercial/Professional/Hire Use	
--------	--------------	--	----------------------------------	--

Webb Lawnmowers privacy commitment to machine owners: Thank you for completing this form. The information supplied, helps us to improve the products & services we provide, including information that we believe is relevant to your and/or your machine. We value your trust by giving us this information about yourself and we are committed to protecting your privacy. From time to time Webb, its associated companies, authorised dealers or third parties working on our behalf may wish to contact you regarding our products, services, offers, technical improvements or just opinions, which may be used for marketing, research or analysis purposes.

If you DO NOT wish to be contacted by either of the following methods, please tick the relevant box POST ☐ TELEPHONE ☐

If you would like us to contact you by Email, please tick this box ☐

You may give Webb Lawnmowers notice in writing at any time that you no longer wish to receive direct marketing communications

Webb Lawnmowers  
Murdock Road  
Dorcan  
Swindon  
Wiltshire  
SN3 5HY