



Straight Shaft Cow Horn Handle
Brushcutter
WEPK45CH
1938129001

Operator's Manual & Parts List

Please read & understand this manual, paying particular attention to the safety instructions, before use.
The manufacturer reserves the right to change the product specification and livery according to continued product improvements.



CONTENTS

SAFETY INSTRUCTIONS

SPECIFICATIONS

COMPONENTS

ASSEMBLY

OPERATION

MAINTENANCE, CLEANING & STORAGE

TROUBLE SHOOTING

PARTS DIAGRAM & LIST

WARRANTY








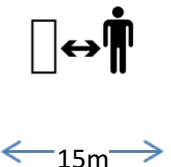






DECLARATION OF CONFORMITY



INSTRUCTION MANUAL

SAFETY INSTRUCTIONS

Read and understand the owner's manual and labels affixed to the machine. Learn its application and limitations as well as the specific potential hazards. Retain these instructions for future reference. The operator is responsible for following the warnings & instructions in this manual and on the product.

	Read & understand operator's manual before using the machine. Failure to follow instructions could result in death or serious injury.		This graphic and when accompanied by WARNING or DANGER , calls attention to actions which could lead to SERIOUS INJURY
	Always wear eye and ear protection		Always TURN OFF THE ENGINE , ensuring the cutting tool has stopped, before cleaning, removing or adjusting the blade.
	Always wear gloves to protect your hands. SHARP ROTATING BLADES		Wear foot protection or sensible shoes when using the machine
	WARNING Never modify a machine in any way. Incorrect use of a machine can cause SERIOUS OR FATAL PERSONAL INJURY		Keep all bystanders & animals at least 15 metres away from the machine during operation. If approached, stop the machine immediately.
	No smoking		Risk of Carbon Monoxide Poisoning. Ensure working area is correctly ventilated.
	Do not use near a flame, or sparks		Fire Risk Fire and its vapors are extremely flammable & explosive. Fire or explosion can cause severe burns or death.
	Moving Parts Rotating parts can contact or entangle hands, feet, hair, clothing or accessories. Traumatic amputation or severe laceration can result		Hot Surface. Running engines produce heat. Engine parts, especially the exhaust, become extremely hot. Severe thermal burns can occur on contact



Safety alert symbol. Used to alert you to potential personal injury hazards. Obey all safety messages that follow this symbol to avoid possible injury.



DANGER

Indicates an imminently hazardous situation which, if not avoided, will result in serious injury.



WARNING

Indicates a potentially hazardous situation which, if not avoided, could result in serious injury



CAUTION

Indicates a potentially hazardous situation which, if not avoided, may result in minor or moderate injury.

CAUTION

Used without the safety alert symbol indicates a potentially hazardous situation which, if not avoided, may result in property damage.

STAY ALERT

Do not operate the machine while under the influence of drugs, alcohol, or any medication that could affect your ability to use it properly. Do not use this machine when you are tired or distracted from the job at hand. Be aware of what you are doing at all times. Use common sense.

AVOID DANGEROUS CONDITIONS

Make sure there is adequate surrounding workspace. Cluttered areas invite injuries.

Keep your work area clean with sufficient light. Keep area around the machine clear of obstructions, stones, sticks, wires and other debris or foreign bodies which could cause damage to the machine.

DO NOT SMOKE, whilst using the machine.

INSPECT YOUR MACHINE

Check all bolts, nuts, and screws for tightness before each use, especially those securing guards and drive mechanisms. Vibration during use may cause these to loosen.

Replace damaged, missing or failed parts before using.

Warning labels carry important information.

Replace any missing or damaged warning labels.

DRESS PROPERLY

Do not wear loose clothing, gloves, scarfs, neckties or jewelry (rings, wrist watches), which can be caught in moving parts.

ALWAYS wear protective eye and ear wear. Appropriate gloves are also recommended.

Wear protective hair covering to contain long hair, preventing it from getting caught in machinery.

DO NOT use whilst barefoot or wearing open toed footwear.

KEEP BYSTANDERS AND CHILDREN AWAY

Keep unauthorised persons or animals a minimum distance of 15 metres away from the mower. Do not allow children to handle, use, or climb on the lawnmower.

DO NOT OVERREACH

Keep proper footing and balance at all times, particularly if using on slopes. The machine should not be used on steep slopes and always be sure of footing.

AVOID INJURY FROM UNEXPECTED ACCIDENT

Keep hands out of the way of moving parts, particularly the engine and rotating cutting tool.

DO NOT FORCE TOOL

Always work within the rated capacity. Do not use the machine for a purpose for which it was not intended.

Always use the correct handles and shoulder straps provided with the machine.

MAINTAIN YOUR MACHINE WITH CARE

Clean the machine immediately after use. Keep the machine clean to ensure it operates to its full and safest performance. When maintaining this machine, only the manufacturer's original replacement parts should be used. The use of non-original manufacturer parts may invalidate your warranty.

STORE IDLE EQUIPMENT

When not in use, the machine should be stored in a dry location. Keep the machine away from children and others not qualified to use it. DO NOT STORE FUEL IN THE MACHINE, fuel over 30 days old can become stale and if used, damage the carburetor, which is not covered by the manufacturer's warranty.



INSTRUCTION MANUAL

SPECIFICATIONS

Model	WEPK45CH
Product No.	1938129001
Engine Model	TJ45E, Air Cooled,
Stroke	2 Stroke
Displacement (cm ³)	45.4 cm ³
Weights (kgs)	N.W 12.6 – G.W 13.6
Fuel capacity (L)	1.0
Spark plug (NGK)	BPMR7A
Fuel	Petrol and mineral oil mix ratio (25:1) Petrol and semi-synthetic oil mix ratio (50:1) (refer to oil manufacturer)
Carburettor	Diaphragm Type
Air Cleaner	Polyurethane Foam
Cutting Device	3 Tooth Cutting Blade / Twin 2.4mm Line Bump Feed Head
Drive shaft Length	1500 mm
Cutting width	254mm for blade / 465mm for bump head
Handle Type	Cow-Horn Handle
Ignition	Electronic
Drive	Centrifugal Clutch
Sound Pressure Level	102 dB(A)
Sound Power Level	107 dB(A)
Guarantee Sound Power Level	110 dB(A)
Vibration level during use (Max.)	<9.2 m/s ²
Vibration level for idling (Max.)	<4.3 m/s ²
Maximum engine performance	2.2 kW
Engine speed (rotational frequency) at recommended max. spindle rotational frequency	12500 min-1
Maximum rotation frequency of spindle	10000 min-1
Idle speed (Max.)	2850 min-1
Fuel consumption	544 g / kWh
Standard Tools	Screw Wrench 17x19mm, Spanner 8x10mm, Allen Key 4-5mm
Accessories	Double Harness

The manufacturer reserves the right to change the product specification and livery according to continued product improvements.



This symbol on the product or on its packaging indicates that this product may not be treated as household waste. Instead it shall be handed over to the applicable collection point for the recycling of electrical and electronic equipment.

For more detailed information about recycling of this product, please contact your local council office, your household waste disposal service or shop where you purchased the product.

COMPONENTS



1	Engine	2	Air Filter	3	Fuel Tank
4	Harness Point	5	Handle	6	Handle Clamp
7	Shaft	8	Guard	9	Gear Case
10	3 Tooth Blade	11	On/Off Switch	12	Safety Lever
13	Throttle Trigger	14	Throttle Lock Button	15	Harness
16	Nylon Head				

Carefully remove the machine from its packaging and check that you have all the components.

If parts are missing or damaged, please contact us:

Telephone: 01793 333212

(Mon to Fri 8.00am to 5.30pm excl. Bank Holidays)

Email: customerservice@webbgardenpower.co.uk



INSTRUCTION MANUAL

ASSEMBLY

PLEASE NOTE, THESE INSTRUCTIONS ARE SUPPLIED TO ASSIST YOU IN THE ASSEMBLY OF YOUR PRODUCT, SOME STEPS MAY NOT BE NECESSARY.

Remove the machine and contents from the carton. Be sure the carton is empty before discarding.

If you require any assistance with regards to the contents of the machine package, contact us:

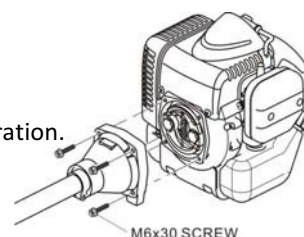
Tel: 01793 333212 - Mon – Fri 8.00am – 5.30pm (excl. Bank Holidays)

Email: customerservice@webbgardenpower.co.uk

STEP 1 - ENGINE TO THE SHAFT TUBE (MAY NOT BE NECESSARY)

Put engine and shaft tube on the ground then assemble as shown.

Ensure the M6x30 screws are tightened to prevent them coming loose during operation.



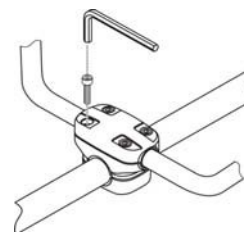
STEP 2 – HANDLE ASSEMBLY

Insert both of the handles into Handle Joint evenly. Ensure the trigger assembly is on your right hand side.

Adjust the handle joint to the most comfortable position for the user.

Adjust the handles to a suitable angle.

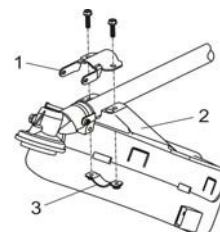
Tighten the handle bolts, through the handle, bottom clamp and supplied nuts.



STEP 3 – GUARD ASSEMBLY

Join the two parts of the cutter guard together using the screws and nuts supplied.

Fit the guard assembly to the drive shaft housing using brackets, screws and nuts.



STEP 4 – THROTTLE WIRE MOUNTING (MAY NOT BE NECESSARY)

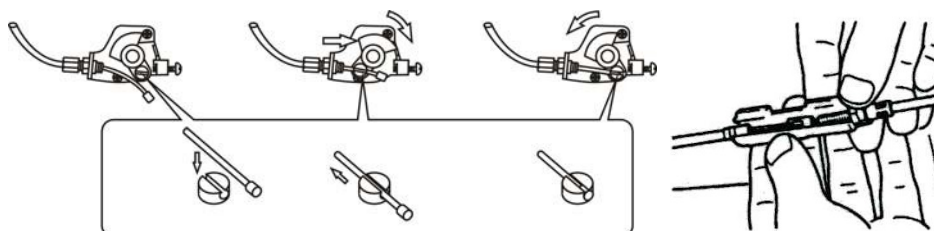
Pass the throttle wire through the adjusting screw on the carburetor

Move the carburetor swivel toward the attachment.

Fit the tip (thick portion) of the throttle wire into the hole in the swivel.

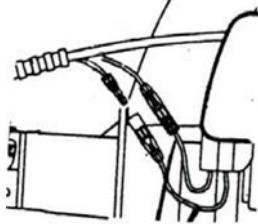
Fit the tip of the throttle wire from the throttle trigger into the tip of the throttle wire from the engine

Close the cover so that the arrow mark is set toward the lever by holding the joint of the 2 throttle wires.



STEP 5 – ENGINE WIRING

Connect the 2 lead wires from the throttle trigger to the corresponding 2 wires from the engine.



STEP 6 – HARNESS

WEPK27L

Place your right arm, shoulder and head into the loop of the single harness. The harness should sit on your left shoulder and sit across your body, with the hook clasp, sitting on your right hip. Adjust the length of the harness accordingly. Attach, with the hook clasp being placed through the Harness Point on the shaft of the machine.

WEPK35CH

Pass your arms through the straps as if putting on a coat. Buckle the harness at the front of your body. Set the shoulder pads properly.

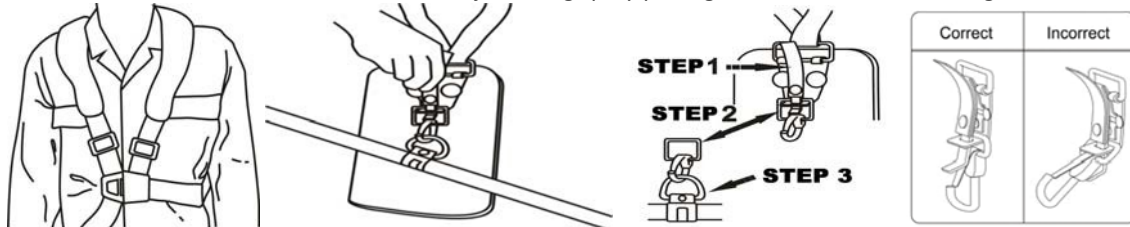


CAUTION

Only use the quick release mechanism in an emergency!

The double-shoulder harness has a quick release mechanism to release the harness instantly, in an emergency. Pull the harness grip upward to separate the hook from the harness so that the harness is separated from the trimmer.

To reconnect the harness to the trimmer, readjust the grip by pulling it and reset the hook ring



STEP 7 – BUMP FEED NYLON HEAD.

Match the hole in the side of the cutting attachment guard with the hole in the side of the gear housing.

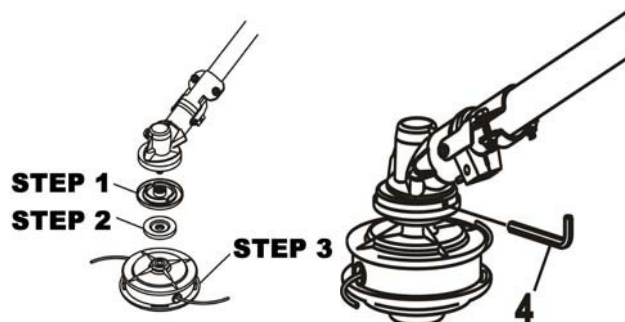
Then insert a 4mm Allen key into the holes to stop the clamp moving.

Undo the shaft nut by turning in a **clockwise** with the spanner provided.

Insert the upper clamp and lower clamp into the gear housing.

Rotate the nylon cutting head **anti-clockwise** by hand to attach it to the gear housing, until tight.

Remove the Allen key.





INSTRUCTION MANUAL

STEP 8 - 3 TOOTH METAL BLADE

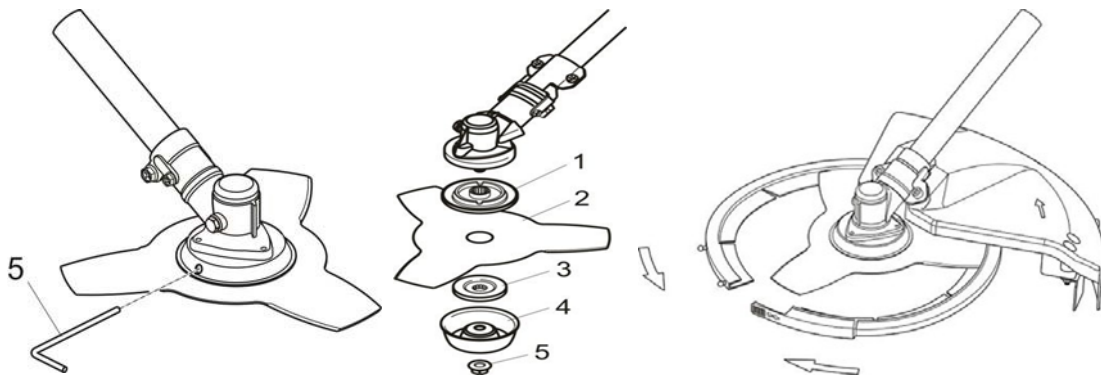
Match the hole in the side of the cutting attachment guard with the hole in the side of the gear housing. Then insert a 4mm Allen key into the holes to stop the clamp moving.

Undo the shaft nut by turning in a **clockwise** with the spanner provided.

Remove the blade cutting attachment tightening nut, cup washer and lower blade mounting washer from the gear housing.

Fit the cutting blade, ensuring it is seated correctly and level. Tighten the nut securely in an **anti-clockwise** direction. Remove the 4mm Allen key.

When not in use store the blade in its protective casing.



WARNING

EXCESSIVE VIBRATION OF THE METAL BLADE INDICATES IT HAS NOT BEEN INSTALLED CORRECTLY. STOP THE ENGINE IMMEDIATELY, CHECK THE BLADE INSTALLATION AND RE-INSTALL CORRECTLY. AN INCORRECTLY INSTALLED BLADE CAN CAUSE INJURY.

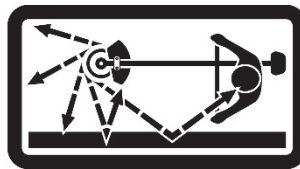
OPERATION



DANGER

All model line trimmers & brushcutters can throw small stones, metal or small objects as well as material being cut. Do not allow anyone to enter the operating DANGER ZONE with you. The danger zone is an area 15 metres in radius

Insist that persons in the RISK ZONE beyond the danger zone wear eye protection from thrown objects. If the unit must be used where there are unprotected people, operate at a low throttle speed to reduce the risk of thrown objects.



DANGER ZONE WITHIN 15 METRES - RISK ZONE GREATER THAN 15 METRES

GENERAL USE



WARNING

Prior to using the machine, ensure all hardware (bolts, screws & nuts) are securely tightened.

- Operate the trigger on the right handle and hold the left handle for stability.
- The trigger increases and decreases the power of the engine to the attachment, increasing the revolution/reciprocation of the attachment.

WORKING PLAN

- Limit the amount of time the product is used continuously to a maximum of 40 minutes per session.
- Leave the machine to rest between sessions for between 10-20 minutes.
- Total amount of work performed per day with the machine, should be limited to 120 minutes' maximum.
- Continuous use of the machine can cause "Repetitive Stress Injury (RSI)". If you feel discomfort, redness or swelling of your hands and fingers or any other body part, consult your doctor.
- Check local regulations for sound level and hours of operation constraints.
- Never transport the machine, whilst the engine is running.



INSTRUCTION MANUAL

CUTTING WITH A NYLON HEAD

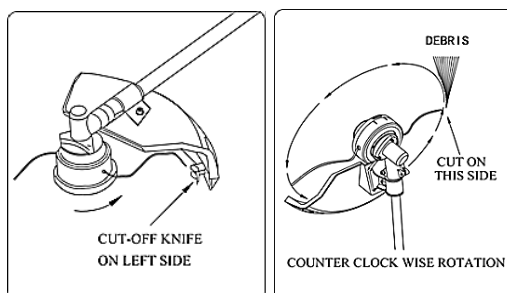
- Always keep a firm grip with both hands during operation
- The machine should be held at a comfortable position, with the trigger handle at hip height. Adjust the harness to suit.
- Maintain a firm footing in case the machine hits a solid object & kicks back
- Cut tall grass from the top down to prevent grass wrapping around the shaft housing & strong head, which may cause overheating and damage. If grass becomes entangled, stop the engine completely and remove the grass.

The line trimmer head rotates in an ANTI-CLOCKWISE direction. The knife, located on the left side of the guard, ensures your nylon line is operating at the correct length for optimum trimming.

To feed more line from the head, bump the head on the ground and the line will automatically exit the head.

NOTE: Nylon line which is too long or the incorrect diameter (Recommended 2.4mm), will cause excess wear to the engine and clutch components, not covered by the manufacturer's warranty.

It is recommended that the head is tilted, so the nylon line cutting circle is moving away from the user and guard/shield. This will enable debris to be thrown away from the user.



TRIMMING

This is feeding the trimmer carefully into the material you wish to cut. Tilt the head slowly to direct debris away from you. If cutting up to a barrier such as fence, wall or tree, approach from an angle where any debris ricocheting off the barrier, will fly away from you. Move the line head slowly until the grass is cut right up the barrier, but do not jam (over-feed) the line into the barrier

If trimming up to a wire mesh or chain linked fence, be careful to feed only up to the fence. If you go too far, the line will snap off around the fence.

Trimming can be done to cut through weed stems one at a time. Place the trimmer line head near the bottom of the weed, never high up, which could cause the weed to chatter and catch the line. Rather than cut the weed right through, just use the very end of the line to wear through the stem slowly.

SCALPING AND EDGING

Both of these are done with the line head tilted at a steep angle.

Scalping is removing top growth leaving the earth bare.

Edging is trimming the grass back where it has spread over a path or driveway.

During edging and scalping, hold the unit at a steep angle and in a position where the debris and any dislodged dirt and stones will not come back towards you, even if it ricochets off the hard surface.



WARNING

DO NOT use a metal blade for scalping or edging



WARNING

DO NOT trim any area where there maybe strands of fencing wire. Do not cut where you cannot see what the cutting tool is cutting.

CUTTING WITH THE METAL BLADE

- Always keep a firm grip with both hands during operation
- The machine should be held at a comfortable position, with the trigger handle at hip height. Adjust the harness to suit.
- Maintain a firm footing in case the machine hits a solid object & kicks back.
- Do not use the metal blade near fencing, posts, buildings or other immovable objects – use the nylon head.
- Best results are obtained if you cut from right to left, in a broad sweeping motion.
- If a hard object is struck, immediately stop the machine and inspect for damage.



WARNING

DO NOT use the put the metal blade into contact with Utility Wires, Metal Stakes, Rubber, Masonry, Rocks, Fences, and Trees.



DANGER

DO NOT cut with a dull, cracked or damaged metal blade.

Before cutting, inspect for obstructions. If an obstruction cannot be removed, mark its location clearly so you can avoid it during operation.

Rocks & metal can dull or damage a blade. Wires can wrap around the blade head or be thrown in the air.

SCYTHING WEEDS

This is cutting by swinging the blade in a level arc. It can quickly clear areas of field grass and weeds. Scything should not be used to cut large, tough weeds or woody growths.

Scything can be done in both directions, or just in one way which results in the debris being thrown away from you. This is done by using the side of the blade that it is rotating away from you. Tilt the blade downwards slightly, on this same side. You will be hit by some debris if you scythe in both directions

NOTE: THE METAL BLADE IS REVERSIBLE. DO NOT SHARPEN THE METAL BLADE, AN UNEVEN BLADE WILL CAUSE EXCESSIVE VIBRATION.



INSTRUCTION MANUAL

FUEL & OIL MIXTURE



Fuel & its vapors are very flammable. Do not use or fuel the machine near a flame, sparks or while smoking. Allow the engine to cool for more than 2 minutes, before re-fueling. Never fuel the machine with the engine running. Fuel the engine at least 3 metres away from your work area. Always fuel your machine outdoors.

FUEL MIXTURE RATIO - 25:1

(UNLEADED PETROL 25:1 2-STROKE MINERAL OIL)

IF USING SYNTHETIC OR SEMI SYNTHETIC OIL, CONSULT THE OIL MANUFACTURERS INSTRUCTIONS, HOWEVER 50:1 IS ACCEPTABLE FOR THE KAWASAKI ENGINE

25:1 FUEL MIXTURE RATIO

Unleaded Petrol – litre	Two-Stroke Mineral Oil - ml
1	40
2	80
3	120
4	160
5	200

- Use good quality unleaded fuel which contains NO ETHANOL or METHANOL. Use Branded 89 octane or higher unleaded fuel, known to be of good quality.
- Fuel which is older than 30 days old can become stale and cause acid & gum deposits in the fuel system or essential carburetor components. This could result in starting issues which **would not be covered by your manufacturer's warranty**.

To keep fuel fresh, we recommend you use *Handy Parts – Sure Start Garden Machinery Fuel Additive* which is available in 250ml bottles, for 25 litres of fuel.

- ✓ Helps makes machines easier to start
- ✓ Extends shelf life of petrol up to 2 years
- ✓ Keeps carburetor & engine clean
- ✓ Reduces emissions & increases fuel economy

- Only use 2-stroke air cooled engine oil. DO NOT USE automotive or marine oil.
- It is recommended that you use a Fuel Mixing Bottle, to ensure the correct fuel mixture is used with your machine. We recommend Handy Parts item HP-120. The fuel mixture should be shaken prior to entering the machine fuel tank.
- Mix only the quantity you require to complete your specific task.
- Unscrew the machine fuel cap slowly and fill the fuel tank with your fuel mixture to a maximum of 80% capacity. This will allow for fuel tank expansion.
- Fasten the fuel cap tightly, being careful not to cross-thread. This will also prevent loosening through vibration during use.
- Wipe away any spillage, with an appropriate material.
- If the machine has continued leaks, the product should not be started. Never use the machine with damaged ignition cable or spark plug cap, as there is a risk of sparks.

IMPORTANT

- ✓ Ensure that any stored petrol/oil mixture is clearly marked in a separate appropriate canister for a maximum of 4-6 weeks.
- ✓ If the machine is not going to be used for a long period, drain the mixture from the fuel tank, start the engine and drain the carburetor of any remaining fuel. (See Maintenance for further instruction)
- ✓ Dispose of any unwanted 2-stroke mixture at an authorised recycling point.

ENGINE STARTING & STOPPING PROCEDURE

BEFORE START THE ENGINE

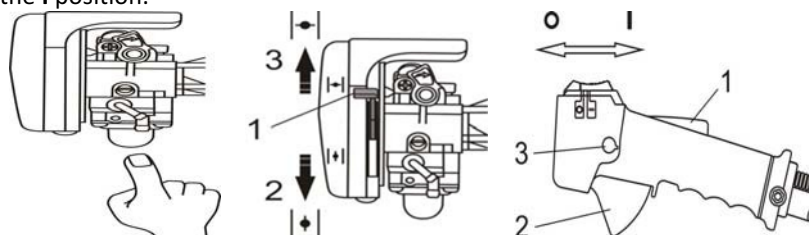
Check for loose screws and nuts and fill with properly mixed fuel. Place the engine on stable ground with the engine stand (fuel tank) and the guard resting on the ground.

STARTING A COLD ENGINE

Push the priming pump 5 times.

Fully close the choke lever.

Set the switch to the I position.



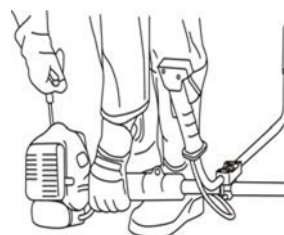
Hold the trimmer shaft near the engine firmly and pull the starter strongly.

(DO NOT LET THE RECOIL STARTER ROPE RETRACT BY ITSELF, FEED THE ROPE BACK INTO THE HOUSING)

When ignition is heard, reset the choke and pull the starter.

Warm up the engine for about 3 minutes.

When the engine has started at the initial ignition open the choke lever gradually.



STARTING A WARM ENGINE

Fully open the choke lever.

Push the priming pump 5 times.

Hold the handle and depress the throttle trigger. Release the throttle trigger while pushing the throttle lock button on the handle.

Set the switch to the I position.

Hold the trimmer shaft near the engine firmly and as in Fig. 17 pull the starter strongly.

(DO NOT LET THE RECOIL STARTER ROPE RETRACT BY ITSELF, FEED THE ROPE BACK INTO THE HOUSING)

If the engine does not start, repeat the procedure for starting a cold engine.



CAUTION

After starting the engine, accelerate and decelerate the engine several times by opening and closing the throttle trigger. Air in the carburetor causes poor acceleration or engine stoppage.

Re-fuel before the fuel is used up. Starting the engine after using all of the fuel is very difficult.

STOPPING THE ENGINE

Do not suddenly stop the engine when operating the machine at high speeds.

Gradually release the throttle trigger and idle the engine before setting the switch to STOP.



CAUTION

Do not operate the engine at high speeds with no load on the cutting attachment, especially when the engine is new. When operated at high speeds with no load, it will accelerate to an excessively high speed that might harm the engine.



INSTRUCTION MANUAL

ENGINE DOES NOT START

If the engine does not start or flames flow back through the exhaust, even though you have pulled the starter many times, remove and check the spark plug.

If the spark plug is dry, no fuel has been fed into the cylinder. Check the fuel pipe and carburetor.

Clean or replace the spark plug if they are wet or dirty.

If fuel has overflowed into the crank case, remove the spark plug, open the throttle and pull the starter 2 or 3 times to remove excess fuel from the crank case.

MAINTENANCE, CLEANING & STORAGE



WARNING

Improper maintenance & storage of the machine may void your warranty.

Keep the machine clean for better and safer performance.

MAINTENANCE

- Before each use, check all nuts & bolts to be sure they are sufficiently tightened.
- We recommend only manufacturer original parts are used when maintaining this machine. Failure to do so could invalidate your manufacturer's warranty.
- The engine must be switched off, with the spark plug cap removed, before the machine is unassembled, cleaned, serviced or maintained.

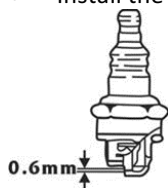
ADJUSTING CARBURETOR

Do not adjust carburetor unless necessary. If you have trouble with the carburetor, see your dealer. Improper adjustment may cause engine damage and void warranty.

SPARK PLUG

Check the Spark Plug after every 10-15 hours of use.

- Remove the Spark Plug cap
- Using the Spark Plug Spanner supplied, remove the Spark Plug by turning it anti-clockwise.
- Clean & adjust the electrode gap to 0.6-0.7mm
- If the Spark Plug is visibly damaged or worn, replace immediately (See Specification for details)
- Install the new/cleaned Spark Plug to finger tightness, before fully tightening with the spanner.



GEAR HOUSING LUBRICATION

The gear housing has a greasing port. Remove the greasing ports screw and feed grease into the port. Grease the port after every 20 hours of operation.



GEAR HOUSING MOUNTING SCREWS

Loose gear housing fixing screws are very dangerous, even though they have covers to prevent them from coming off. Be sure to check them before operating the machine. Tighten the screws securely with the Allen key provided with the trimmer.

BLADE SHARPENING

Never attempt to sharpen the blade. It is reversible, so should be turned over when blunt. The blade must remain balanced; an unbalanced blade will cause excessive vibration through the machine. Always check for any damage before each use and replace a damaged blade immediately, with an approved replacement part.

ADJUSTING THE THROTTLE CABLE

Adjust the throttle cable length with the adjusting nut. If the Nylon cutting head rotates even after you have released your hand from the throttle trigger to idle the engine, adjust the throttle cable length. Loosen the lock nut and turn the adjusting nut to adjust the cable length. Turn the adjusting nut clockwise to lengthen the throttle and counterclockwise to shorten it. Tighten the lock nut after adjustment.

CLEANING

Keep your machine clean.

Thoroughly clean the machine at the end of each use, paying particular attention to cuttings in and around the guard and cutting tool.

AIR FILTER

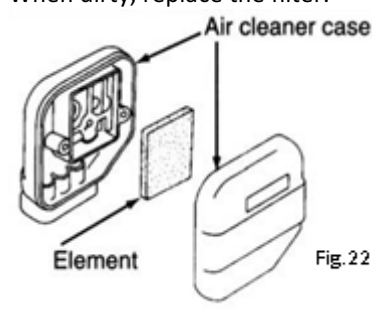
Accumulated dust in the air filter will reduce engine efficiency, increase fuel consumption and allow abrasive particles to pass in the engine. Remove & clean the air filter regularly to ensure optimum performance.

Remove the air filter cover, by releasing the securing winged screw from the front of the cover.

Lift off the cover.

Remove the filter element from the housing.

When dirty, replace the filter.



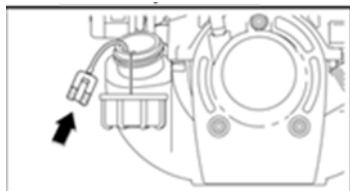
FUEL FILTER

The fuel tank is fitted with a filter. It is situated at the free end of fuel pipe in the fuel tank and can be picked out through the fuel filler neck, with a piece of hooked wire or similar.

Check the fuel filter periodically. Do not allow dust to enter into the fuel tank. A clogged filter will cause difficulty in starting the engine or abnormalities in engine performance.

When the filter is dirty, replace the filter.

When the inside of the fuel tank is dirty, it can be cleaned by rinsing the tank out with petrol.





INSTRUCTION MANUAL

STORAGE

For years of trouble free service, make sure the machine is clean and dry before storing.

Before storing, clean the machine thoroughly as indicated above.

Store indoors or in a safe, locked protected area during severe weather and winter months.

DO NOT STORE in an enclosed area, where fuel vapors can reach an open hot flame.

DO NOT STORE fuel in the machine. Ensure fuel is removed from the fuel tank and carburetor.

If storing for an extended period, inspect, clean and repair the machine if necessary. Remove all fuel from the fuel tank. Start the engine, this will remove all fuel from the carburetor and fuel lines. Remove the spark plug, pour a small quantity of 2-stroke oil into the spark plug hole of the cylinder and re-seat spark plug. Store in a clean, dry, dust free area.

DO NOT STORE fuel for longer than 30 days. Fuel can become stale and cause damage to the engine carburetor, which is not covered by the machines manufacturer's warranty.

TROUBLE SHOOTING

Failures such as a difficulty in starting the engine, irregularity in functions and abnormality in performance can normally be prevented if careful attention is paid to all operating instructions and maintenance procedures.

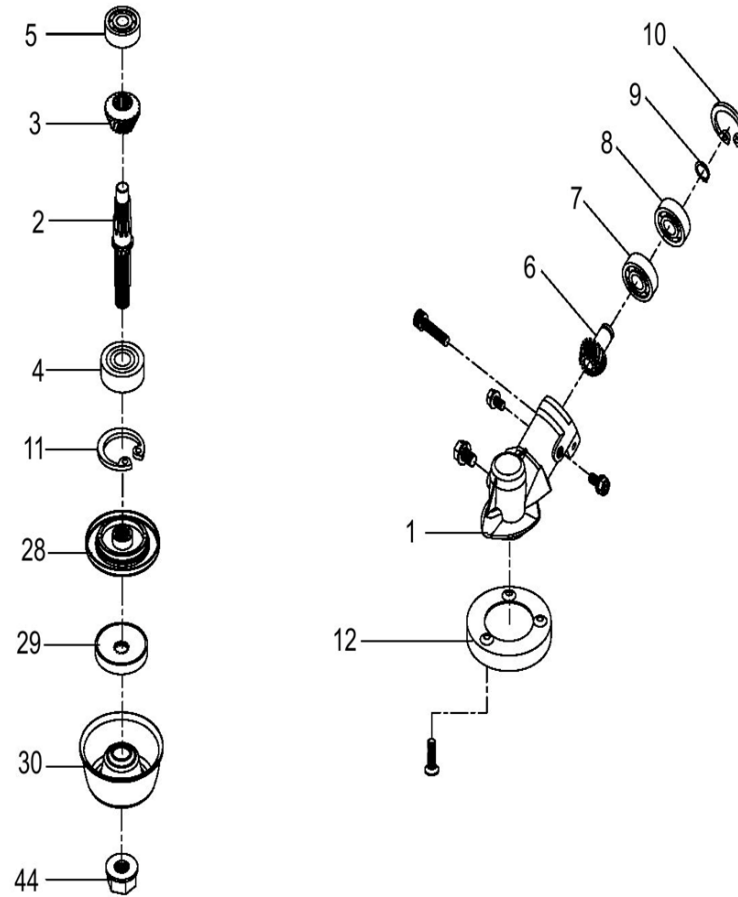
Should the engine not function properly, check the following?

- That the fuel system is in good condition and fuel is flowing to the engine.
- The ignition system is in good condition and the spark plug, sparks correctly.
- Compression of the engine is adequate.

FAILURE TO START

- Correctly follow the starting procedure, not setting the choke lever or priming the engine can cause the engine to not start.
- Dispose of fuel from the tank, particularly if over 30 days old.
- Ensure that fuel is fresh and clean.
- Check fuel filter to ensure it is clean. (Replace filter if necessary).
- Make sure air filter elements are clean.
- Install a new, properly gapped spark plug.
- When there is serious trouble with the unit, do not try to repair it yourself, but have your local approved service dealer inspect it for you.

PARTS DIAGRAM – WEPK45CH Gear Casing

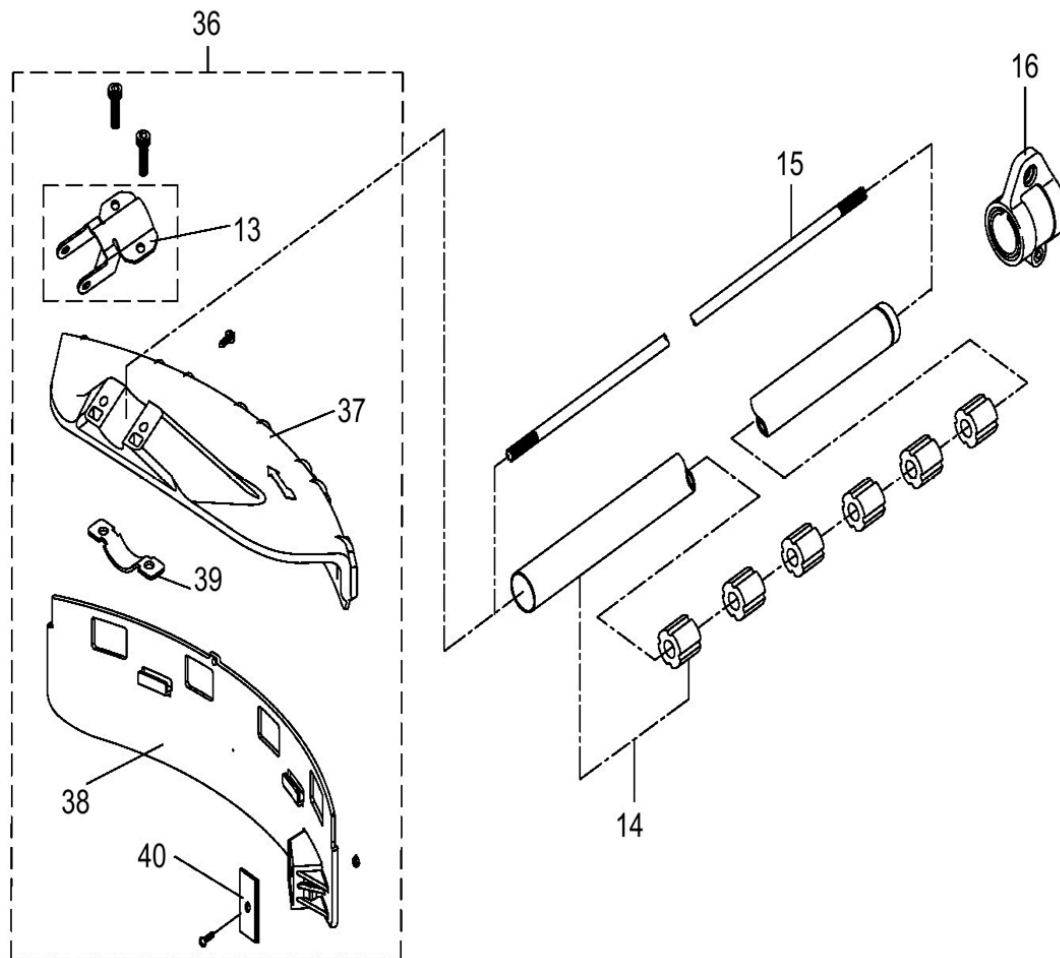


Item No	Part No.	Description	Qty
1	TH211-1	Gear Case	1
2	TH211-2	Spline Shaft	1
3	TH211-3	Pinion	1
4	TH211-4	Bearing Z6002UU	1
5	TH211-5	Bearing Z6000	1
6	TH211-6	Gear	1
7	TH211-7	Bearing Z6001	1
8	TH211-8	Bearing Z6001Z	1
9	TH211-9	Circlip R-S12	1
10	TH211-10	Circlip R28	1
11	TH210-11	Circlip R32	1
12	TH211-12	Cover	1
28	TH211-28	Inner Blade Washer	1
29	TH211-29	Outer Blade Washer	1
30	TH211-30	Nut Cover	1
44	TH209-42	Blade Nut M10	1



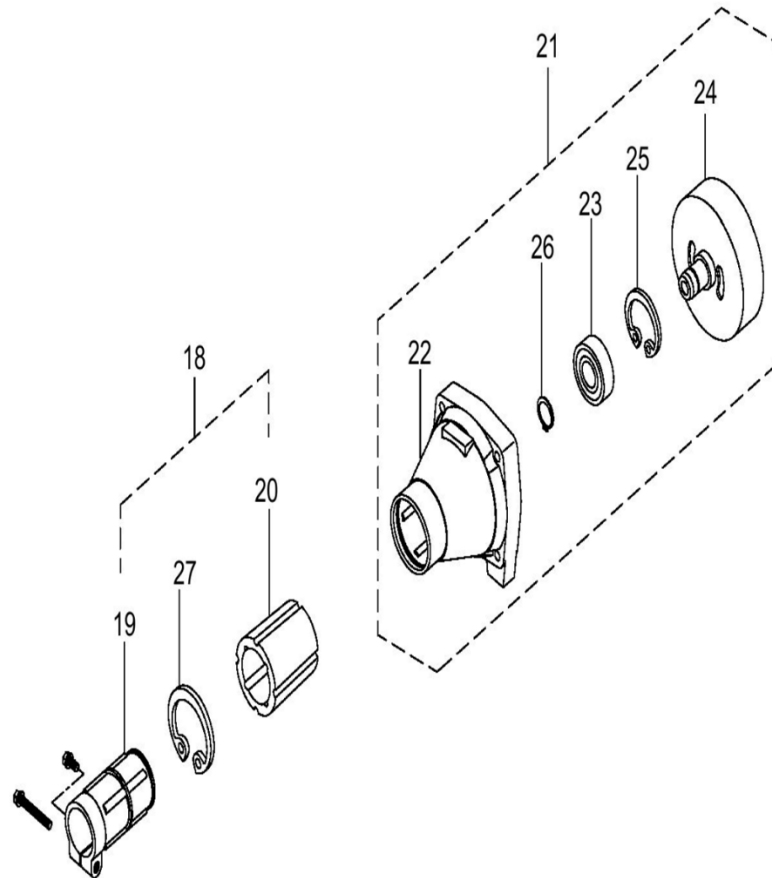
INSTRUCTION MANUAL

PARTS DIAGRAM – WEPK45CH Shaft & Guard



Item No	Part No.	Description	Qty
13	TH211-13	Guard Clamp Upper	1
14	TH211-14	Shaft	1
15	TH211-15	Internal Driveshaft	1
16	TH211-16	Harness Clamp	1
36	TH211-36	Guard Assembly	1
37	TH211-37	Guard Top	1
38	TH211-38	Guard Shield	1
39	TH211-39	Guard Clamp Lower	1
40	TH211-40	Cutter	1

PARTS DIAGRAM – WEPK45CH Clutch & Boss

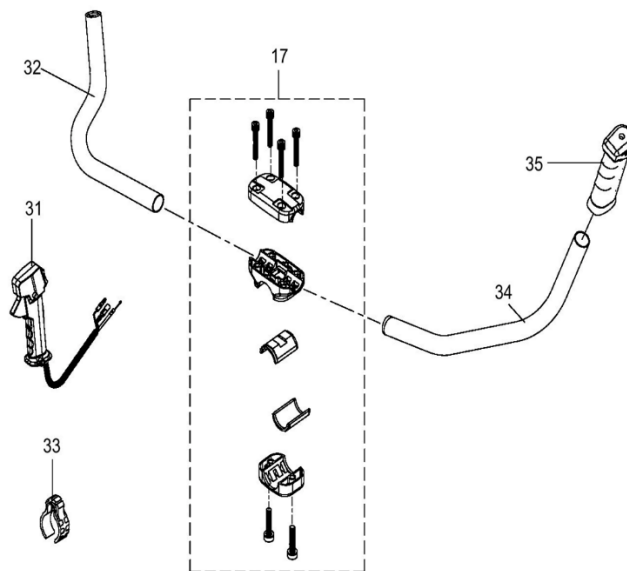


Item No	Part No.	Description	Qty
18	TH211-18	Boss Assembly	1
19	TH211-19	Boss	1
20	TH208-52	Rubber Damper	1
21	TH210-21	Clutch Assembly	1
22	TH210-22	Clutch Case	1
23	TH210-23	Bearing Z6202ZZ	1
24	TH210-24	Clutch Drum	1
25	TH210-25	Circlip R35	1
26	TH210-26	Circlip R-S15	1
27	TH208-53	Circlip R45	1



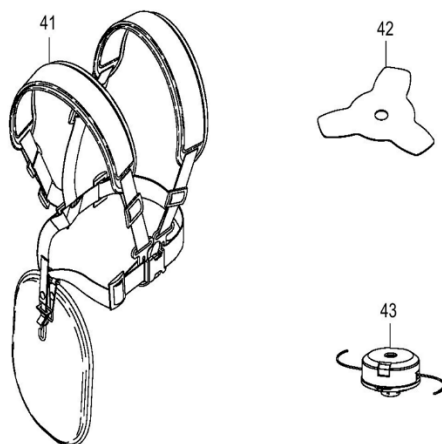
INSTRUCTION MANUAL

PARTS DIAGRAM – WEPK45CH Handle Assembly



Item No	Part No.	Description	Qty
17	TH211-17	Handle Clamp Assembly	1
31	TH210-29	Throttle Lever	1
32	TH210-30	Throttle Handle	1
33	TH211-33	Cable Clip	2
34	TH210-31	Handle	1
35	TH210-32	Grip	1

PARTS DIAGRAM – WEPK45CH Accessories



5/5

Item No	Part No.	Description	Qty
41	WP02622	Double Harness	1
42	WP02641	Blade	1
43	HP-116	Nylon Head	1



EC DECLARATION OF CONFORMITY

We Handy Distribution Ltd - SN3 5HY (Importer) declare that the product:

Designation: 45cc Cow Horn Handle Petrol Brushcutter & Line Trimmer

Model(s): WEPK45CH

Product No: 1938129001

Type/Serial No. As per rating label on machine

Complies with the following directives:

Machinery Directive 2006/42/EC

The conformity assessment procedure followed was in accordance with

EN ISO 11806-1:2011

Measured Sound Power Level: $L_{WA} = 110\text{dB(A)}$

Vibration Measurement: During Use 9.2m/s^2 - Idling 4.3m/s^2

Notified Body: TÜV Rheinland LGA Products GmbH

Addresses: Tillystraße 2, 90431 Nürnberg, Germany

Authorised signatory and technical file holder

Date: 29/10/2016

Signature: 

Name: Mr Simon Belcher

Position: Managing Director

Company: Handy Distribution Ltd

Address: Murdock Rd, Swindon, Wiltshire, SN3 5HY.





INSTRUCTION MANUAL

This Service Book is provided with your Webb, to help you look after your purchase to our recommendations and enable you to take advantage of the 2 year conditional manufacturer domestic warranty*.

* Commercial/Professional & Hire users receive a 90 day warranty

Present this service book to your authorised Webb repair dealer, whenever a service or a warranty appraisal is required.

The booklet is applicable to the following products, in the UK only:

- Ride On Lawn Tractors
- Cylinder Lawnmowers
- Petrol Rotary Lawnmowers
- Petrol Hand Held Range

Please register your machine using the following pages or at www.webblawnmowers.co.uk. By registering your machine, you agree to maintain the machine in accordance with the service schedules specified in this manual and services duly recorded. You may be asked to produce this booklet as proof of servicing in the event of a claim. Proof of purchase should also be kept as a reference.

Ensure you have the following information available from your machine product label. The two examples below can be found on your machine:



1. Model Number

2. Serial & Product Number

SERVICE BOOK

1. Users Statement of Warranty

Each new machine is warranted against defective material or assembly of material under normal usage. The warranty applies to the original purchaser, is not transferable and covers faulty parts and the labour involved in replacing and repairing those parts, which are of original manufacture.

2. Period of Warranty

2 year conditional warranty from the original date of sale to the first domestic user.

90 days from the original date of sale to the professional/commercial or for hire user.

Engine warranty as per the engine manufacturer's warranty, which will be supplied with the machine.

90 days from the original date of sale for Replacement Spare Parts

All machines' must be serviced within the first 14 months from the original date of purchase, to qualify for a second year parts & labour warranty, details of the service must be recorded in the service record within this manual.

A reduced warranty period of 90 days applies to those items which are subject to normal wear and tear and in normal use, will need replacement or adjustment.

These items are chargeable after 90 days of ownership.

Filters
Tyres / Wheels
Drive chains and belts
Brake & clutch friction components
Control cable & starter cords
Fluids & lubricants
Spark plugs
Blades (Lawnmowers & Brushcutters)
Cutter bars (Hedgecutters)
Drive & clutch cable surfaces
Nylon Lines (Line Trimmers)
Carburettor cleaning
Bearings
Bushes
Electric cable
Grass collectors

3. Not covered by this warranty

(a) The warranty policy does not cover any depreciation or damages caused by ordinary wear, rusting or corrosion, lack of correct maintenance or operation, misuse, abuse, lack of transportation or accident.

(b) The warranty policy does not cover any costs necessary for the standard periodic maintenance services instructed by the operators manual, or service parts replacement which would include oil, filters, tyres, belts, brake linings, fuses, blades, seals and other service parts unless it can be proven that the item has evidence of faulty manufacture.

(c) The warranty policy will not cover failure or damage caused as a result of parts or accessories being modified without the written approval of GJ Handy & Co Ltd.

(d) The warranty policy will not cover the unit if non-genuine parts have been fitted and as a result damage has occurred to the unit.

(e) The warranty policy is non-transferable and is only applicable to the original purchaser.

4. Disclaimer

(a) This warranty is only a remedy for defect of products. GJ Handy & Co Ltd will never warranty in terms of the merchantability or the fitness for a particular purpose.

(b) No person is authorised to make any warranties, representations or promises, expressed or implied, on behalf of GJ Handy & Co Ltd, or to modify the terms conditions or limitation of this warranty policy in any way.

(c) Neither GJ Handy & Co Ltd nor any company affiliated with GJ Handy & Co Ltd shall be liable in any event or manner whatsoever for incidental or consequential damages or injuries, including, but not limited to, loss of crops, loss of profit, out of pocket expenses or profits, rental of substitute equipment or other commercial losses.



INSTRUCTION MANUAL

5. General

- (a) Most warrantable failures show up within the first few weeks of use. These failures are usually straightforward and warranty assessment is relatively easy.
- (b) Failures relating to cutter decks and belts need careful investigation, as the cause may not always be straightforward. Look for damage to blades and pulleys especially when the cutter belt or blade boss have snapped or cracked as this could be due to impact damage.
- (c) Customers should always refer to the operator/instruction manual when any disputed problem arises, you will find most areas covered within the manual.

Protecting your machine

Maintenance

Regular maintenance of your Webb machine is essential to ensure it operates, safely, efficiently and therefore reducing the environmental impact.

It is the owner's responsibility to ensure that their Webb machine is maintained at specific intervals. Any approved Webb service dealer can undertake a service, which are specialised in our products and will be aware of your particular machine and any technical updates which will save valuable time & money.

If you are using your machine in dry, dusty or high temperatures, you will need to service the machine more regularly.

Fuel

Due to ongoing efforts by fuel companies to reduce emissions, unleaded petrol will oxidize & deteriorate in storage overtime, leaving residue from detergent components.

Fuel deterioration problems may occur when petrol is stored for over 30 days. If you are planning to store fuel for over 30 days, we recommend you add Handy Parts Sure-Start fuel stabilizer to fresh fuel after purchasing. Sure-Start cannot reconstitute stale fuel.

Storage

When storing your machine for an extended period, we do recommend that you follow the instructions of engine instruction manual.

Always store the fuel in a clean, approved and sealed container. If the container is steel, ensure it is not corroded.

If the container is not filled to its recommended capacity, air can accelerate fuel deterioration.

Always store fuel away from direct sunlight, in a dark, cool environment.

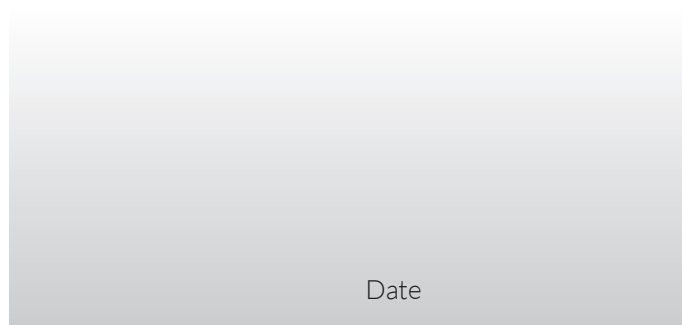
SERVICE BOOK

Your servicing Webb approved dealer will stamp & date the below relevant sections, when the correct service actions have been completed.
PLEASE ENSURE THE SERVICE BOOK IS AVAILABLE FOR THE DEALER, DURING SERVICE WORK.

1st Service

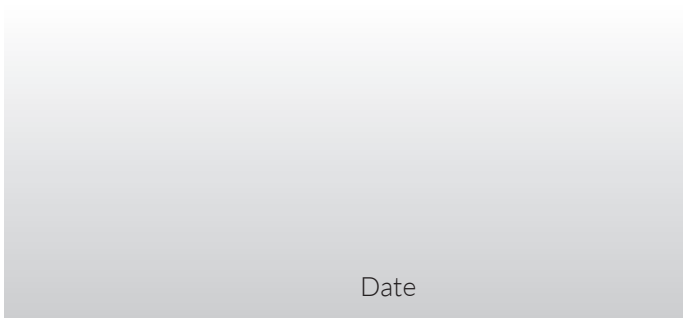
This must be stamped by an approved service dealer to qualify for a free second year warranty.

12 Months



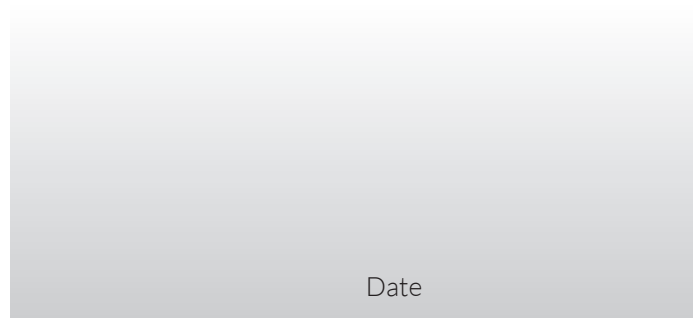
Date

24 Months



Date

36 Months

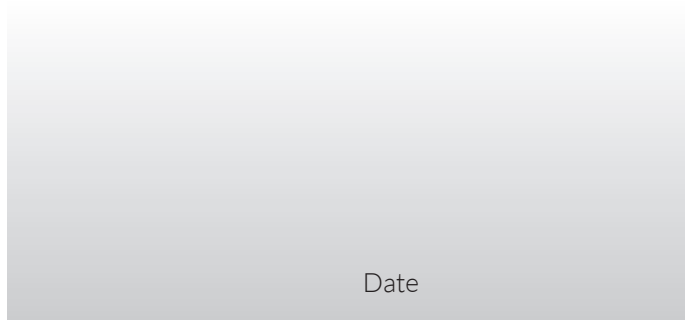


Date



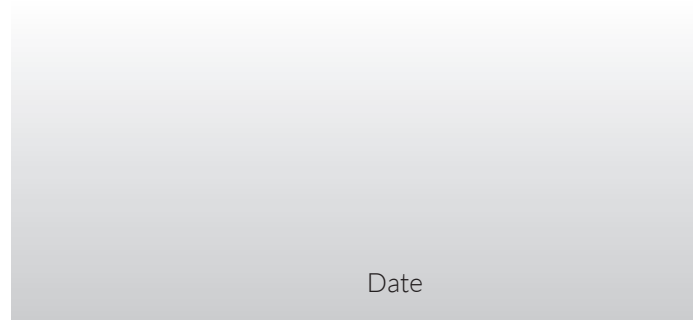
INSTRUCTION MANUAL

48 Months



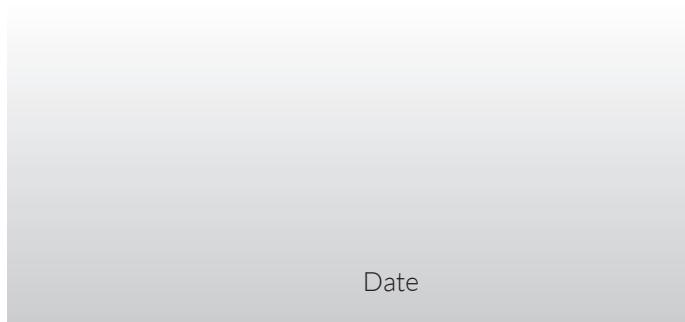
Date

60 Months



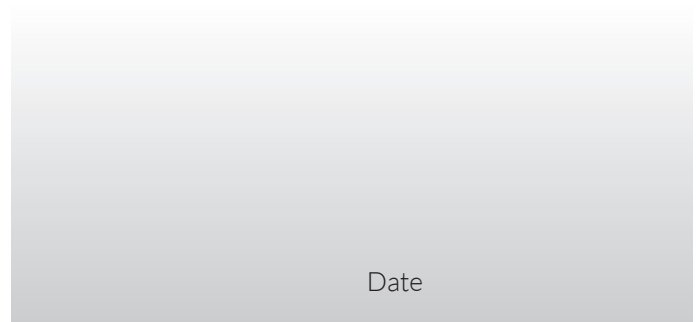
Date

72 Months



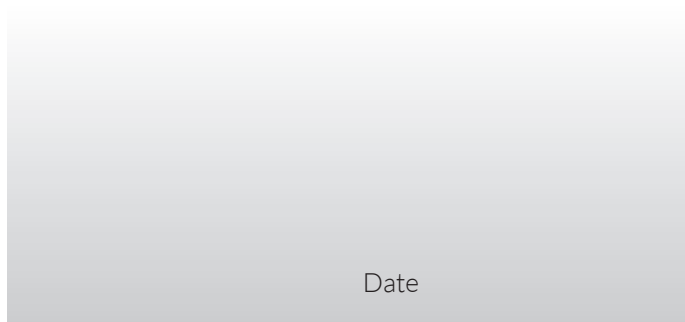
Date

84 Months



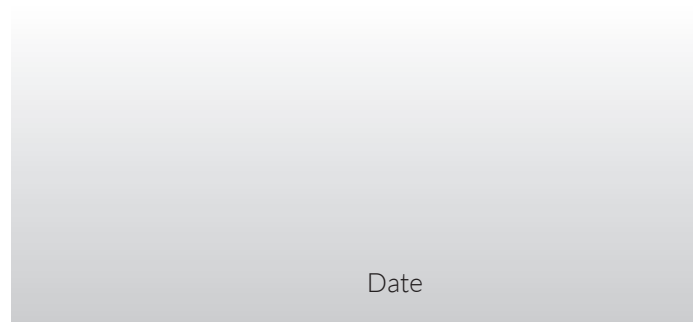
Date

96 Months



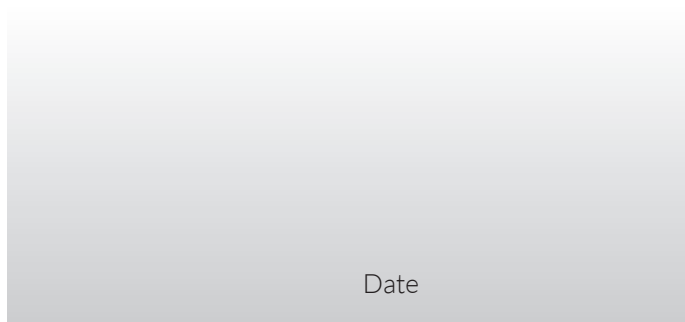
Date

108 Months



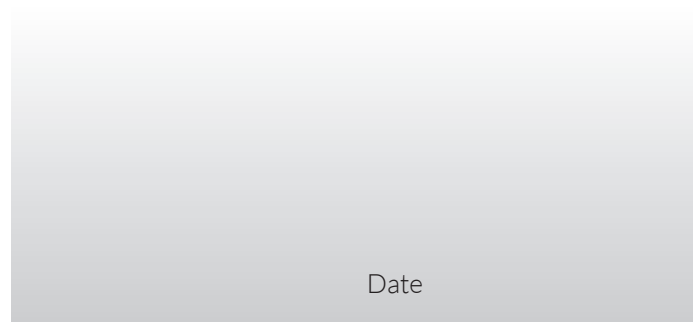
Date

120 Months



Date

132 Months



Date

WARRANTY REGISTRATION

If you have registered online, this form is not necessary.
PLEASE POST THIS COPY TO THE ADDRESS OVERLEAF

Product Information (* Compulsory)

*Model No:	
*Product No:	
*Serial No:	
*Date of Purchase:	

Personal Information (* Compulsory)

*Title		*Forename		*Surname		
*House Number		*House Name				
*Address 1						
*Address 2						
*Town						
*County						
*Postcode						
Home Tel		Mobile Tel				
Email						
Age	18 to 25	26 to 35	36 to 45	46 to 60	61 to 80	81 & over

*Dealer Stamp (Complete Address)



*Selling Retailer (If dealer stamp not available)

*Dealer Name	
*Dealer Address	
*Date of Purchase	

*Usage	Domestic Use	Commercial/Professional/Hire Use
--------	--------------	----------------------------------

Webb Lawnmowers privacy commitment to machine owners: Thank you for completing this form. The information supplied, helps us to improve the products & services we provide, including information that we believe is relevant to your and/or your machine. We value your trust by giving us this information about yourself and we are committed to protecting your privacy. From time to time Webb, its associated companies, authorised dealers or third parties working on our behalf may wish to contact you regarding our products, services, offers, technical improvements or just opinions, which may be used for marketing, research or analysis purposes.

If you DO NOT wish to be contacted by either of the following methods, please tick the relevant box POST TELEPHONE

If you would like us to contact you by Email, please tick this box

You may give Webb Lawnmowers notice in writing at any time that you no longer wish to receive direct marketing communications

Webb Lawnmowers
Murdock Road
Dorcan
Swindon
Wiltshire
SN3 5HY